



PRICED AT
\$857,335

 2964 Sq Ft

 4 Beds

 3.5 Baths

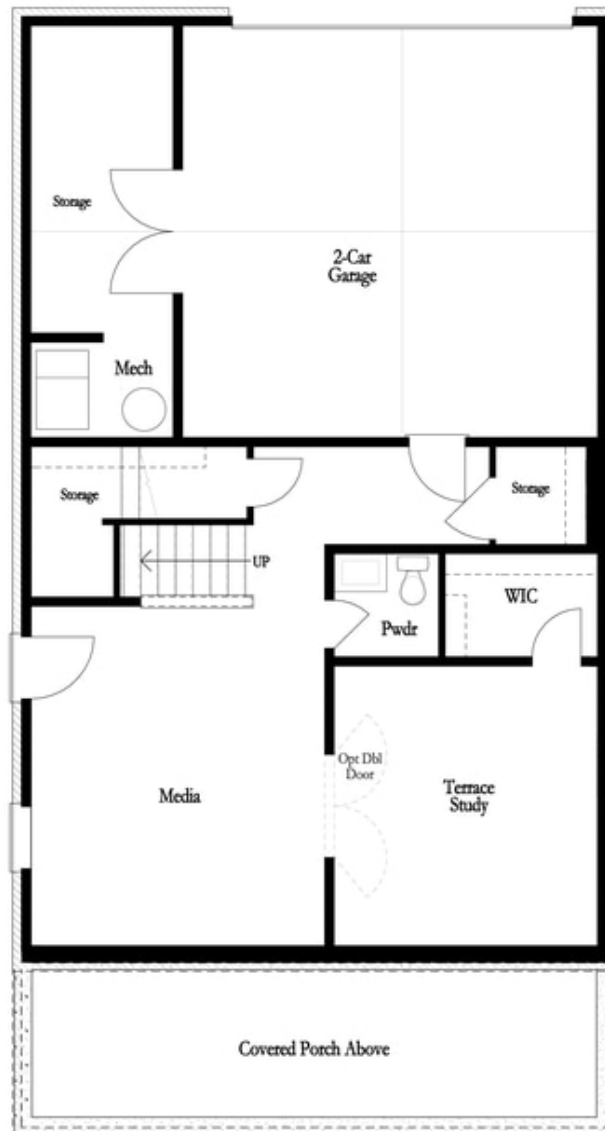
 2 Car Garage

 3.0 Story

Come check out the wooded view ! The Manchester A Floor Plan is Under Construction in the heart of Peachtree Corners! Newly Gated community backing up to the Chatahoochee River! 10' ceiling throughout the main level. Out your kitchen and owner's bedroom give you the best-wooded view in the entire communitiy. Buyers still have time to get creative and personalize this home at our Design Studio. The community is surrounded by beautiful lush trees and the opportunity to take a walk down to the River or enjoy state of the art amenities w/Swim, fitness, parks, clubhouse, fire pits, pickle ball courts etc. For driving directions you can use 4411 E. Jones Bridge Road, Peachtree Corners, GA 30092. Photos are not of actual home but similar plan.

**Want to Know More
About This Home?**

CONTACT OUR NEW HOME NAVIGATOR
Call Us @ (470) 514-6999



Basement Floor

Want to Know More
About This Home?

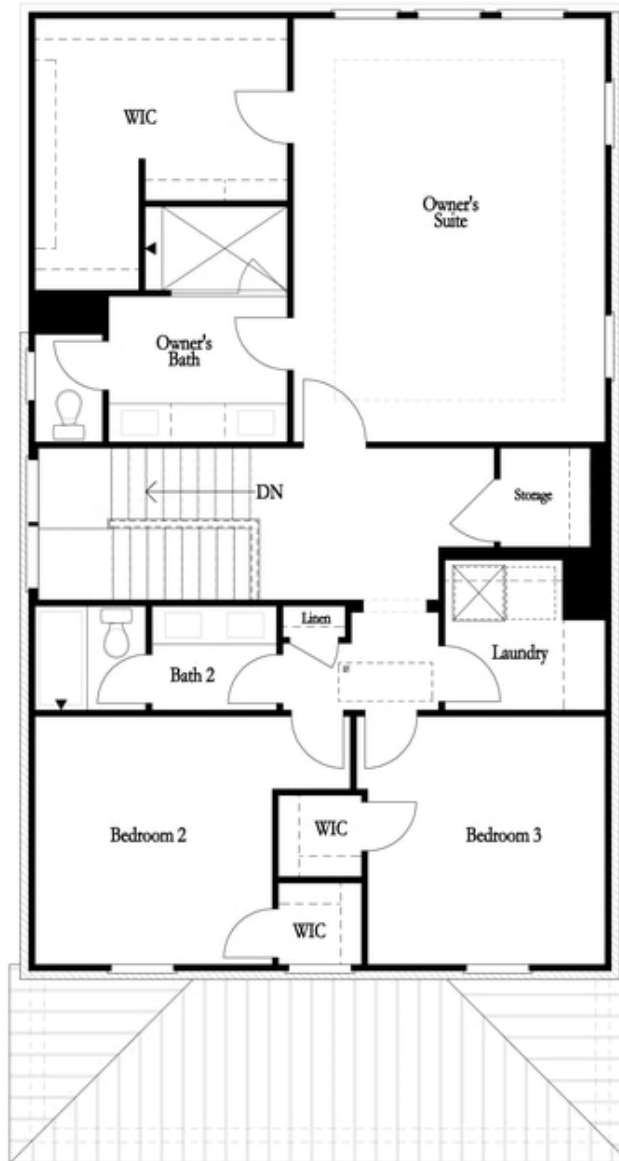
CONTACT OUR NEW HOME NAVIGATOR
Call Us @ (470) 514-6999



First Floor

**Want to Know More
About This Home?**

CONTACT OUR NEW HOME NAVIGATOR
Call Us @ (470) 514-6999

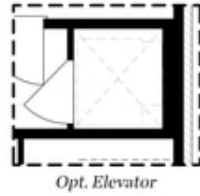


Second Floor

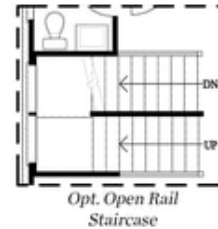
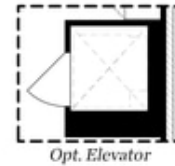
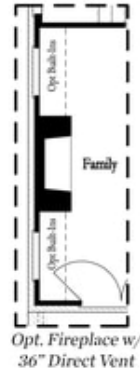
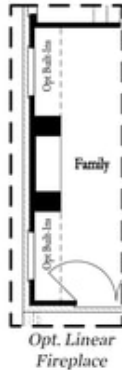
**Want to Know More
About This Home?**

CONTACT OUR NEW HOME NAVIGATOR
Call Us @ (470) 514-6999

Options



Basement Floor Options



First Floor Options

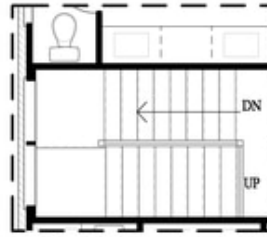
Want to Know More
About This Home?

CONTACT OUR NEW HOME NAVIGATOR
Call Us @ (470) 514-6999

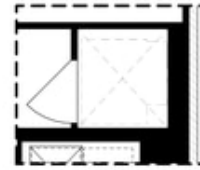
Options



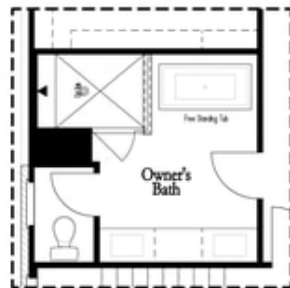
Opt. Laundry Sink



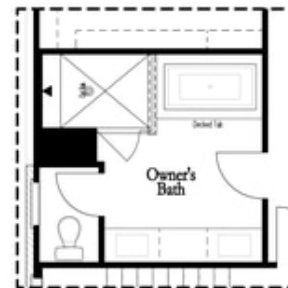
Opt. Open Rail Staircase



Opt. Elevator



Opt. Freestanding Tub



Opt. Decked Tub

Second Floor Options

**Want to Know More
 About This Home?**

CONTACT OUR NEW HOME NAVIGATOR
 Call Us @ (470) 514-6999