



PRICED AT
\$588,155

 2030 Sq Ft

 3 Beds

 2.5 Baths

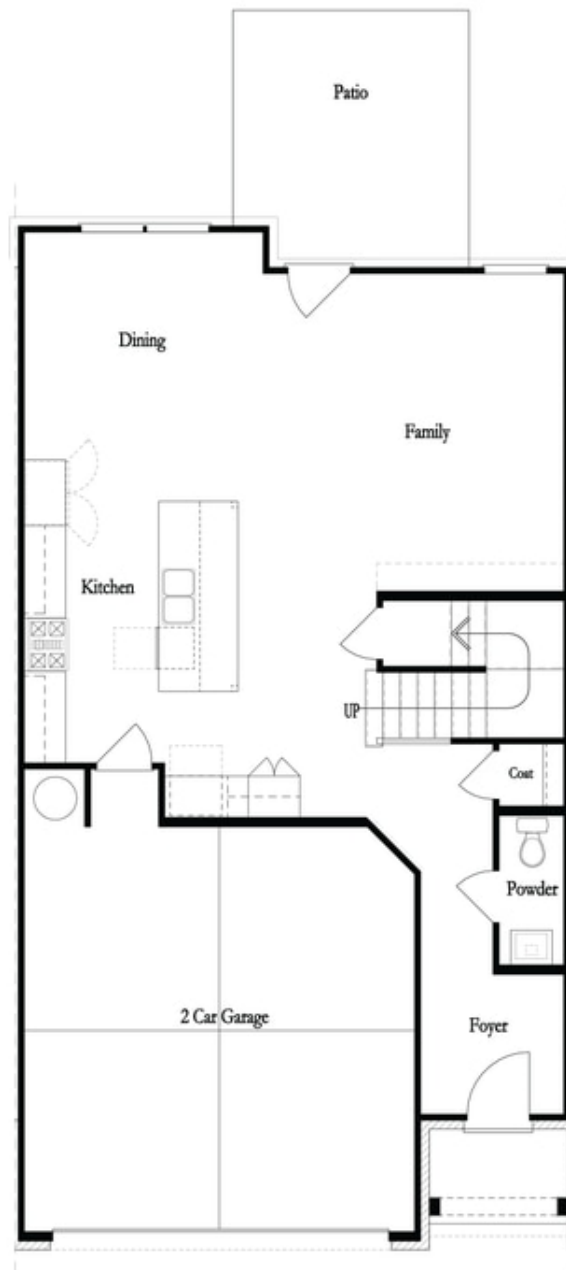
 2 Car Garage

 2.0 Story

Spring into a New Home! Final opportunities to purchase brand new sought after 2-story Stockton plan with private fully fenced backyard at Ellington by The Providence Group! You will love coming home where main level entry leads you to light filled Family room with 12' double sliding doors open to private backyard overlooking Peachtree Ridge Park! Painted Kitchen cabinets with stainless steel appliances and designer finishes include a Large island, quartz countertops and gleaming hardwoods. Second floor features spacious Owner's suite & Spa-like Bath with Walk-in Shower, Soaking Tub & huge walk in closet. Two secondary Bedrooms share a full Bath while each bedroom has a spacious walk-in closet. Hard surface flooring throughout main level, stairs and upstairs hallway. Laundry room conveniently located on the upper level. This home is Under Construction with an estimated completion ealy April 2024. Ellington community situated in a highly desirable location in Gwinnett County and close to 3 vibrant cities - downtown Sugar Hill, Suwanee Town Center and Buford!! Amenities include a Pool, Clubhouse, Playground, Five pocket Parks as well as paved walkway to Peachtree Ridge Park. Easy Access to interstates, shopping and restaurants. \$5,000 in closing cost incentive with the use of one ...

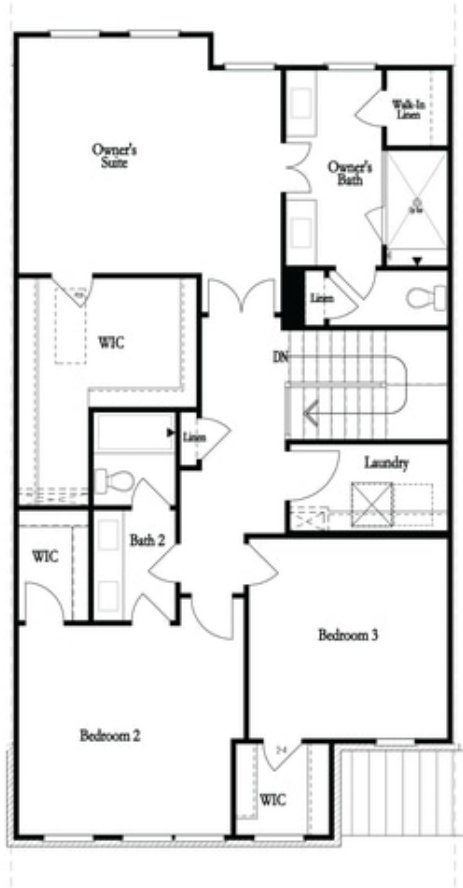
**Want to Know More
About This Home?**

CONTACT OUR COMMUNITY SALES MANAGER
Call Us @ 470.456.9551

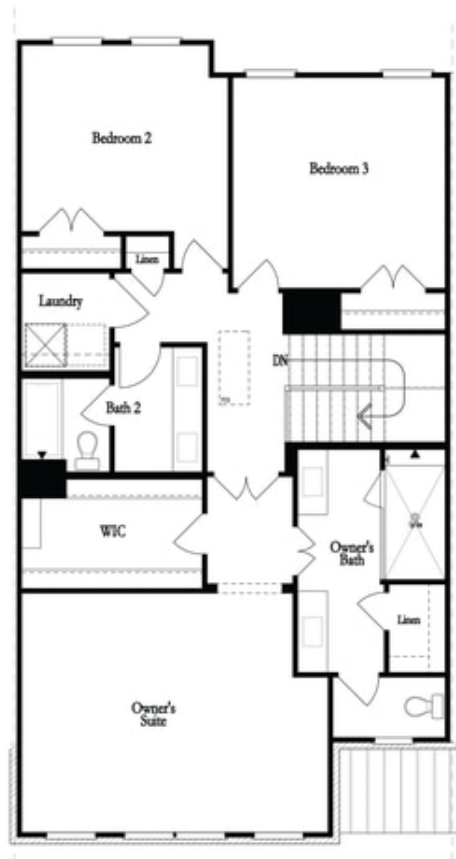


**Want to Know More
About This Home?**

CONTACT OUR COMMUNITY SALES MANAGER
Call Us @ 470.456.9551



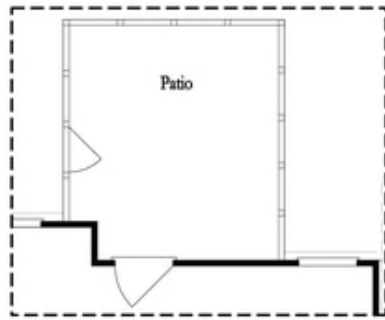
Second Floor - Owner's Rear



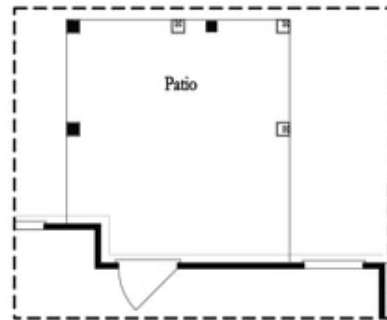
Second Floor - Owner's Front

**Want to Know More
About This Home?**

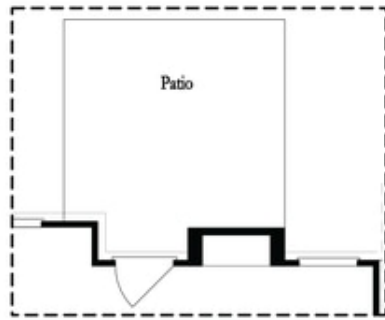
CONTACT OUR COMMUNITY SALES MANAGER
Call Us @ 470.456.9551



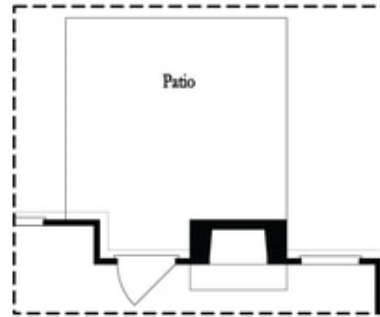
Opt. Screened Patio



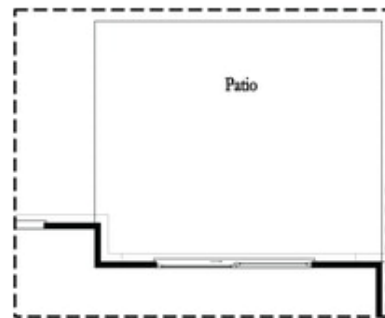
Opt. Coverd Patio



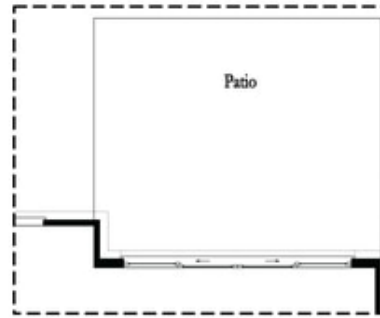
Opt. Linear Fireplace



Opt. Fireplace



Opt. 8 Foot Slider Door

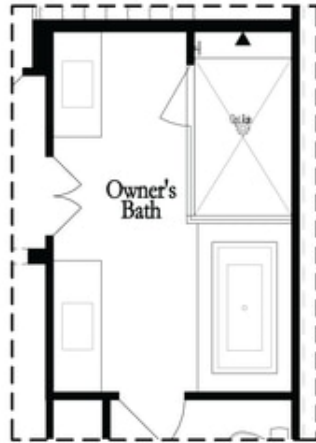


Opt. 12 Foot Slider Door

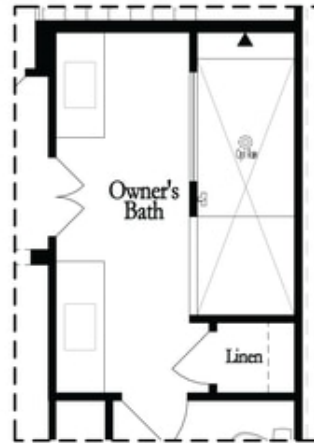
Main Level Options

**Want to Know More
About This Home?**

CONTACT OUR COMMUNITY SALES MANAGER
Call Us @ 470.456.9551

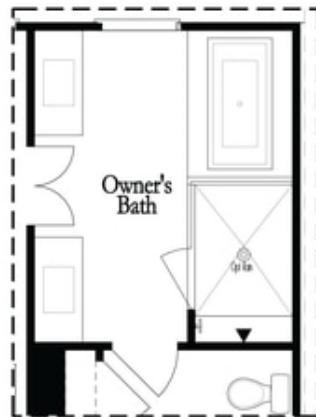


Opt. Shower/Tub

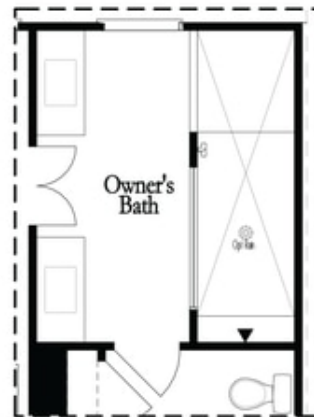


Opt. Walk-Through Shower

Owner's Front - Options



Opt. Shower/Tub



Opt. Walk-Through Shower

Owner's Rear - Options

**Want to Know More
 About This Home?**

CONTACT OUR COMMUNITY SALES MANAGER
 Call Us @ 470.456.9551