


PRICED AT
\$575,700

 2036 Sq Ft

 3 Beds

 2.5 Baths

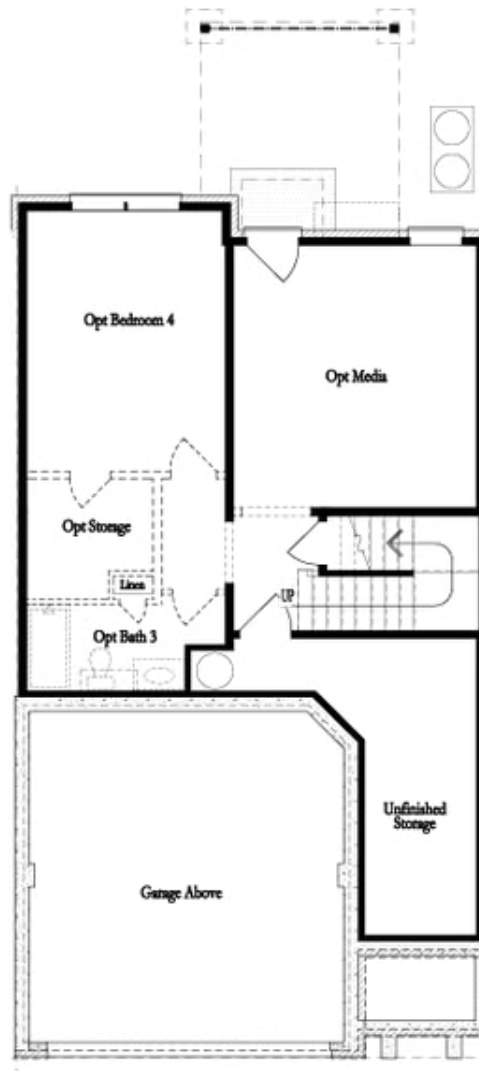
 2 Car Garage

 2.0 Story

BE HOME FOR YOUR HOLIDAY MEMORIES with this quick move-in home by The Providence Group & ask about our Incredible Lender Incentives!! You will love this 2 story Stockton plan! The main level entry that leads you to an open concept first floor featuring open concept Dining/Family with Chef's Kitchen designed for entertainment! The kitchen offers more of a modern feel with painted cabinets and quartz countertops, stainless appliances and a tile backsplash. The Patio in the back provides for outdoor enjoyment. On the 2nd floor you will enter a spacious Owner's suite & bath with walk-in Shower, separate soaking tub, dual vanities, quartz countertops & walk in closet. You will also find 2 secondary bedrooms with a shared bath. The laundry room is located on the upper floor making laundry day super convenient. Community conveniently positioned in a highly desirable location in Gwinnett County and close to vibrant Suwanee Town Center, Duluth, Sugar Hill and Buford! Neighborhood Amenities include a Pool, Clubhouse, and Playground. Quick and Easy Access to interstates, shopping and restaurants. Preferred Lenders - Ameris Bank, Capital City Home Loans, New American Funding, Renasant Bank, and Academy Mortgage Corporation. *Photos are of previously built home by The ...

Want to Know More
About This Home?

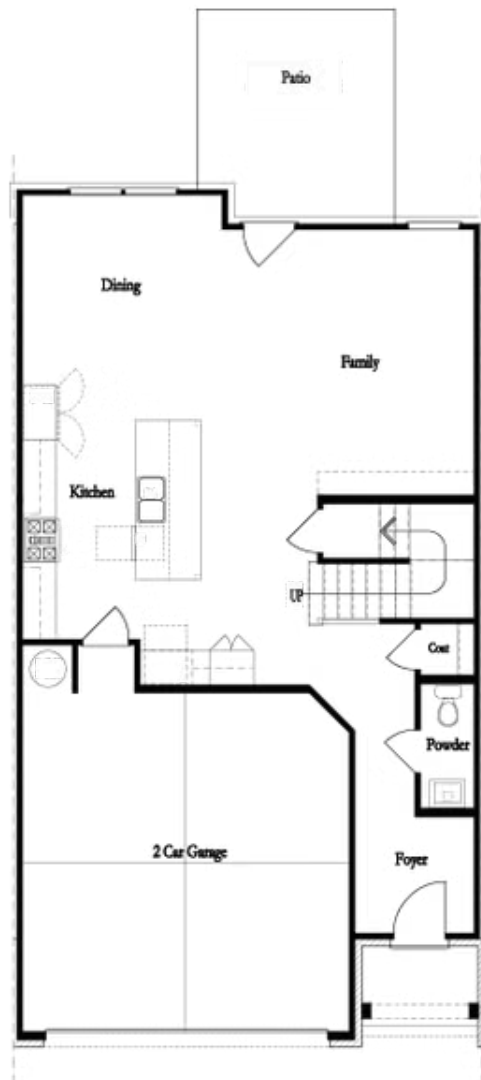
CONTACT OUR COMMUNITY SALES MANAGER
Call Us @ 470.456.9551



Unfinished Basement

Want to Know More
About This Home?

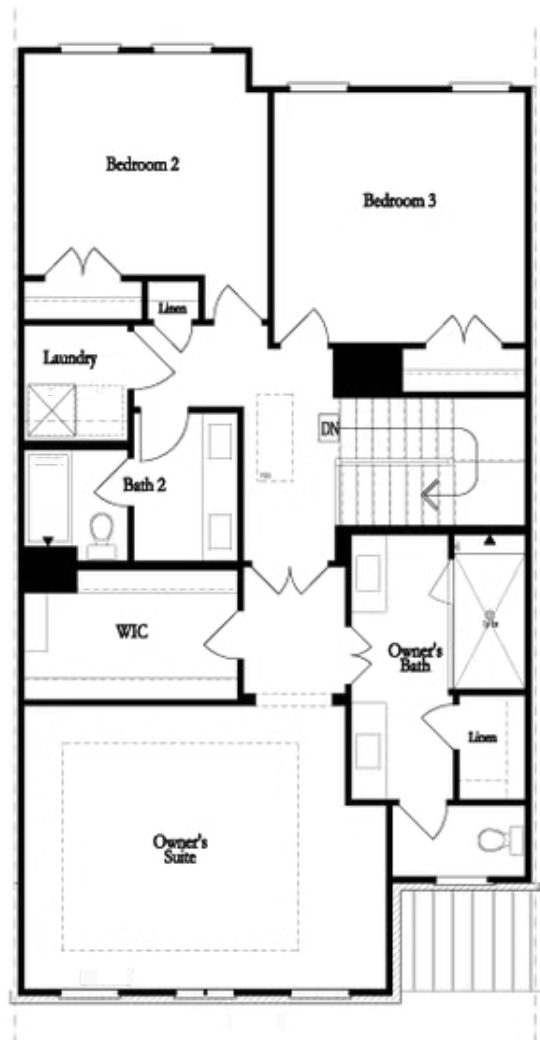
CONTACT OUR COMMUNITY SALES MANAGER
Call Us @ 470.456.9551



First Floor

**Want to Know More
About This Home?**

CONTACT OUR COMMUNITY SALES MANAGER
Call Us @ 470.456.9551

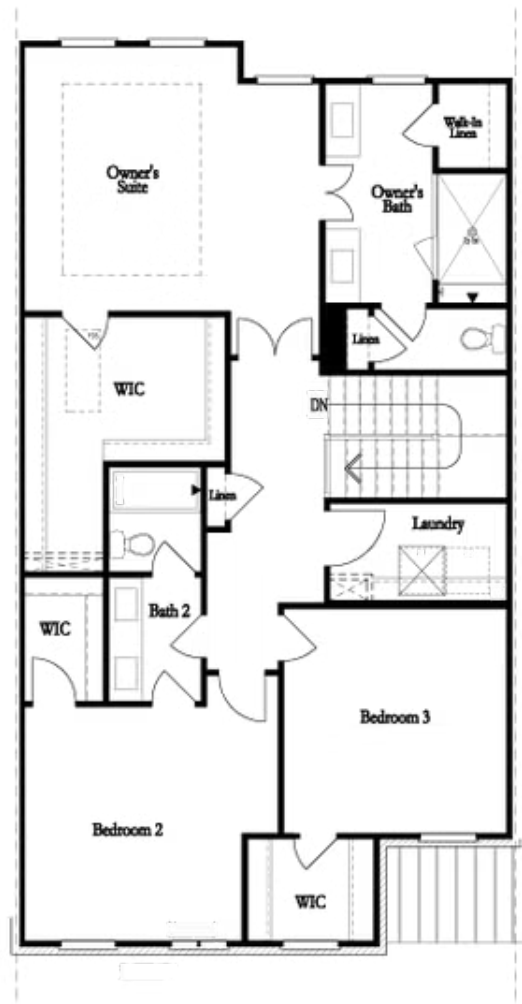


Second Floor
(Owner's Front)

Elevations G, H, J1, J3 & L

Want to Know More
About This Home?

CONTACT OUR COMMUNITY SALES MANAGER
Call Us @ 470.456.9551

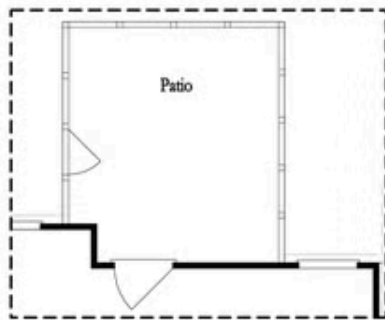


Second Floor
(Owner's Rear)

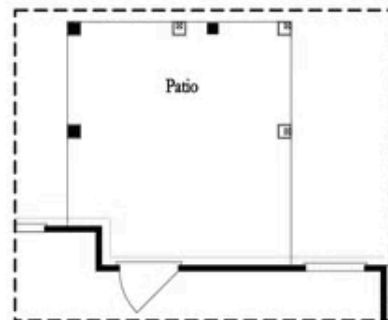
Elevations G, H, J1, J3 & L

Want to Know More
About This Home?

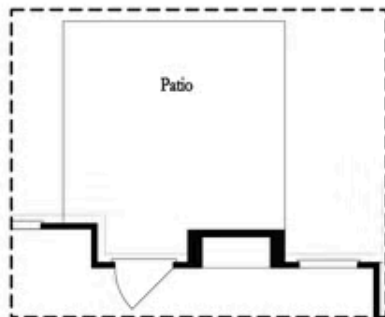
CONTACT OUR COMMUNITY SALES MANAGER
Call Us @ 470.456.9551



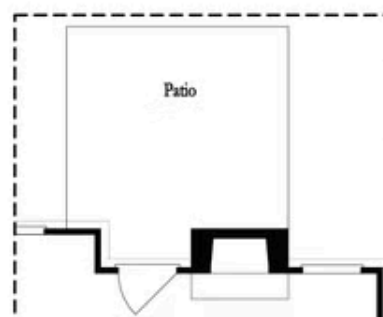
Opt. Screened Patio



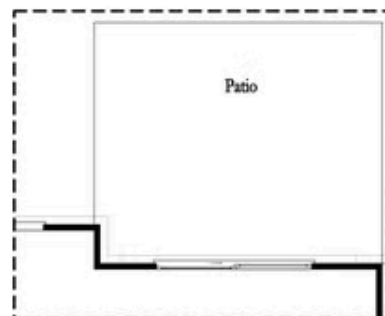
Opt. Coverd Patio



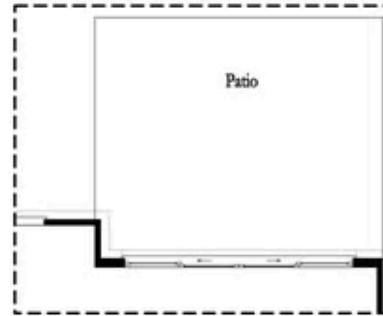
Opt. Linear Fireplace



Opt. Fireplace



Opt. 8 Foot Slider Door

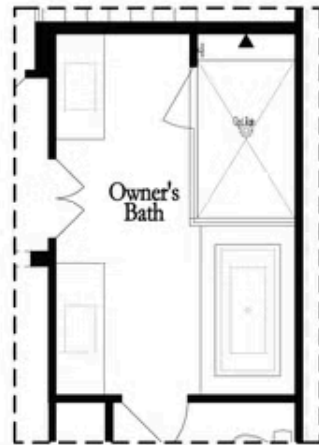


Opt. 12 Foot Slider Door

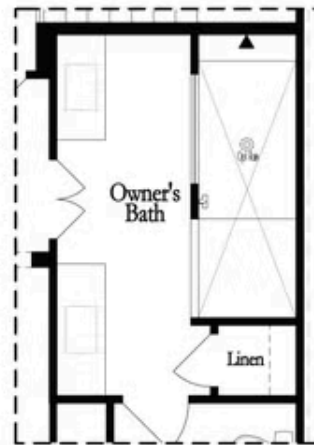
Main Level Options

**Want to Know More
About This Home?**

CONTACT OUR COMMUNITY SALES MANAGER
Call Us @ 470.456.9551

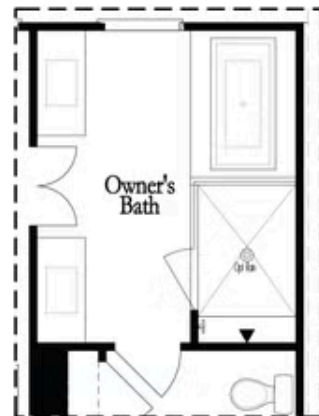


Opt. Shower/Tub



Opt. Walk-Through Shower

Owner's Front - Options



Opt. Shower/Tub



Opt. Walk-Through Shower

Owner's Rear - Options

Want to Know More
About This Home?

CONTACT OUR COMMUNITY SALES MANAGER
Call Us @ 470.456.9551