




PRICED AT  
**\$608,100**

 2479 Sq Ft

 4 Beds

 3.0 Baths

 2 Car Garage

 2.0 Story

Elevate your life in 2023 with a new home by The Providence Group and \$5,000 towards closing cost when financing with one of Seller's 4 preferred lenders! Extremely popular Kincaid layout with 10' ceilings on the main to be built at Ellington! Chef's Kitchen with plenty of cabinets, walk-in Pantry, Stainless Steel Appliances opens to Family and Dining. Bedroom with Full Bath on main that can also be used as an Office/Den. Partially covered patio at private courtyard is great for entertaining. Owner's suite at second floor featuring soaking tub, walk-in shower, his and hers vanities and oversized walk-in closet. A covered deck off the master to sit and enjoy your morning coffee. Two additional Bedrooms at second floor with jack-n-jill Bath. Laundry room and Loft conveniently located on the same level as Owner's Suite. Personalize your new Home by selecting finishes at our state of the art Design Studio! Community Amenities include a gated entrance, club house, pool, playground, five pocket parks, access to a county park trails and a walking path to Peachtree Ridge Park. Ellington is located within the desirable Peachtree Ridge School District and just a short 3 mile drive from the award winning Suwanee Towne ...

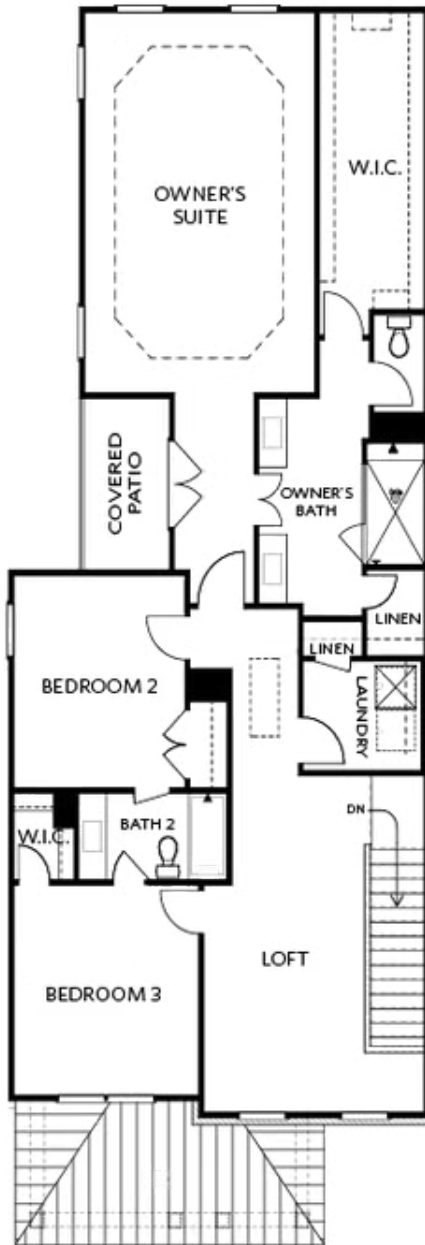
**Want to Know More  
About This Home?**

CONTACT OUR COMMUNITY SALES MANAGER  
Call Us @ 470.456.9551



Want to Know More  
About This Home?

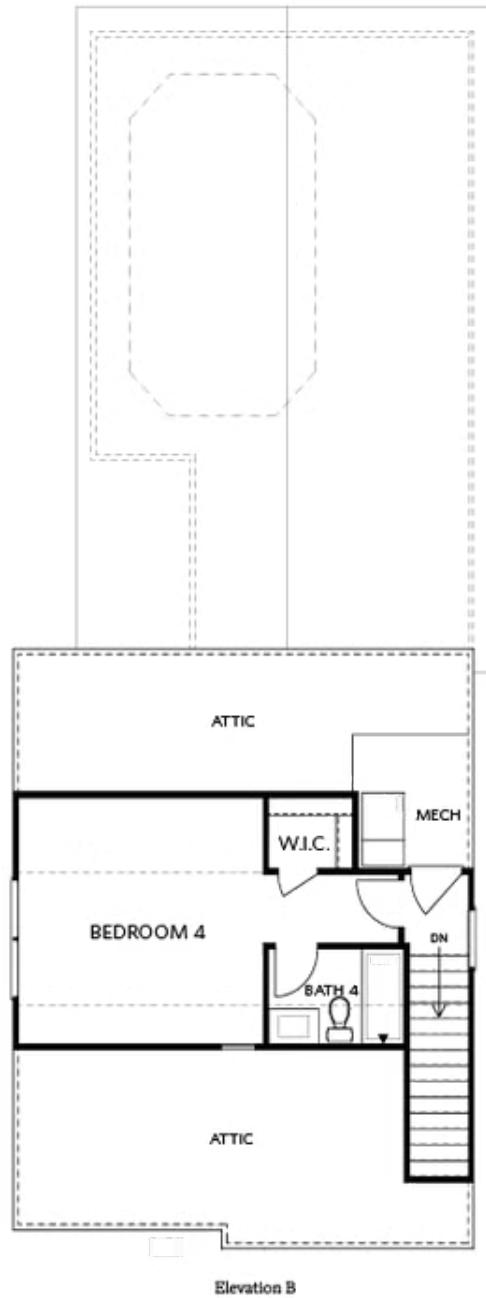
CONTACT OUR COMMUNITY SALES MANAGER  
Call Us @ 470.456.9551



Elevation B

Want to Know More  
About This Home?

CONTACT OUR COMMUNITY SALES MANAGER  
Call Us @ 470.456.9551



Want to Know More  
About This Home?

CONTACT OUR COMMUNITY SALES MANAGER  
Call Us @ 470.456.9551



**Want to Know More  
 About This Home?**

CONTACT OUR COMMUNITY SALES MANAGER  
 Call Us @ 470.456.9551