



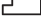




PRICED AT
\$511,800

-  2479 Sq Ft
-  4 Beds
-  3.0 Baths
-  2 Car Garage
-  2.0 Story

Kincaid by the Providence Group - Enjoy living in this beautiful open concept home complete with 3 bedrooms, a Private Office and a Loft! Oversized Owner's Suite with a huge walk-in closet and Owner's Bath with separate vanities! This home also features a Covered Patio just off of the Kitchen! Community amenities will include a gated entrance, cabana, pool, five pocket parks and access to County Park trails and a path to Peachtree Ridge Park! Ellington is also located within the desirable Peachtree Ridge School District and just a short 3 mile drive from the award winning Suwanee Town Center! Home is under construction and will be available for a February 2022 closing.

**Want to Know More
About This Home?**

CONTACT OUR COMMUNITY SALES MANAGER
Call Us @ 470.456.9551



**Want to Know More
About This Home?**

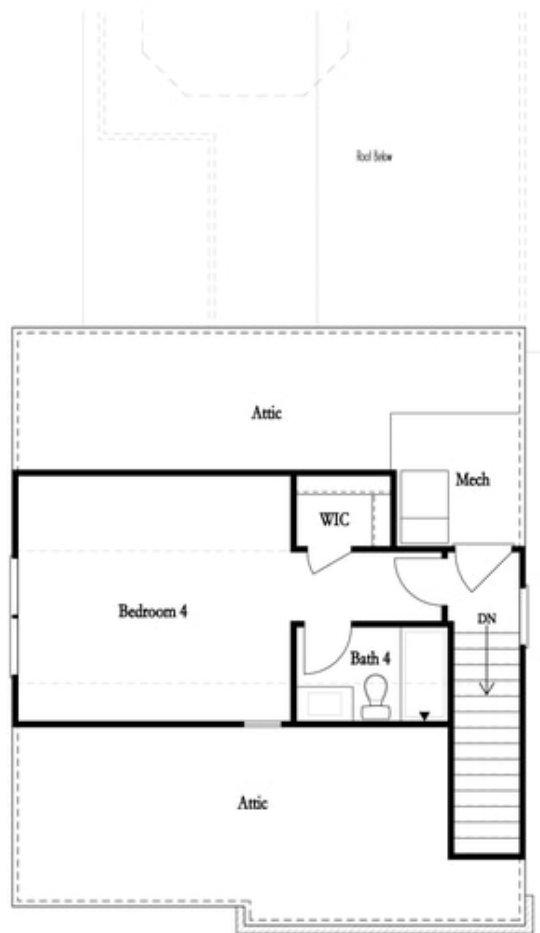
CONTACT OUR COMMUNITY SALES MANAGER
Call Us @ 470.456.9551



Second Floor

**Want to Know More
About This Home?**

CONTACT OUR COMMUNITY SALES MANAGER
Call Us @ 470.456.9551



Optional Third Floor

**Want to Know More
About This Home?**

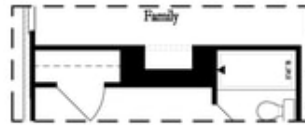
CONTACT OUR COMMUNITY SALES MANAGER
Call Us @ 470.456.9551

Options



Opt Left Side Window @ Office/Bedroom

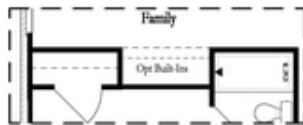
Opt Shower @ Bath 3



Opt Linear Fireplace



Opt Fireplace



Opt Nook

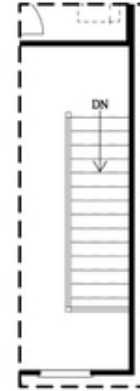


Opt Closet

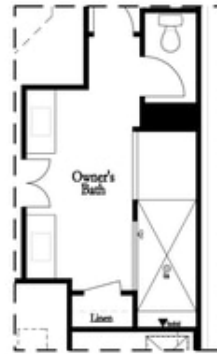
First Floor Options



Opt Left Side Window @ Bedroom 3



Opt Open Rail



Opt Walk-Thru Shower



Opt Tub/Shower Combo

Second Floor Options

Want to Know More
About This Home?

CONTACT OUR COMMUNITY SALES MANAGER
Call Us @ 470.456.9551