



PRICED AT
\$599,825

 2236 Sq Ft

 4 Beds

 3.5 Baths

 2 Car Garage

 2.0 Story

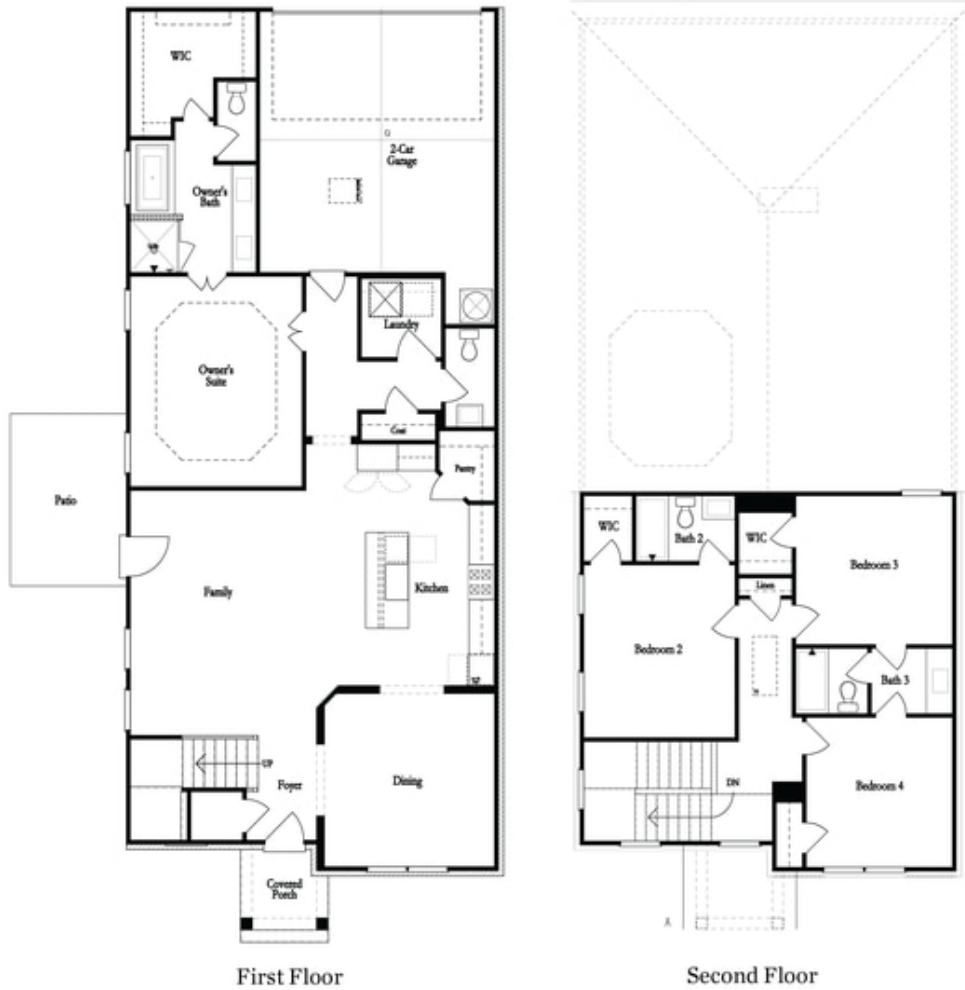
Elevate your life in 2023 with a new home by The Providence Group and \$5,000 towards closing cost when financing with one of Seller's 4 preferred lenders. OWNER SUITE ON MAIN feels like the perfect retreat at the end of the day!!! Sought after Charleston plan featuring Chef's Kitchen with plenty of cabinets, walk-in Pantry, Stainless Steel Appliances and gleaming hardwoods. Separate Dining, Family Room leading to Courtyard Patio. Owner's Suite with Spa-like Bath with oversized walk-in shower, dual vanities and walk-in closet. Guest Bath and Laundry room conveniently located at the main level. At second floor you will find Three additional Bedrooms and Two Full Baths. Hurry to pick your finishes at the Design Studio & make this home YOURS!!! Community Amenities include a gated entrance, club house, pool, playground, five pocket parks, access to a county park trails and a walking path to Peachtree Ridge Park. Ellington is located within the desirable Peachtree Ridge School District and just a short 3 mile drive from the award winning Suwanee Towne Center! This home is to be built - Hurry to pick your interior finishes! Estimated Move-in: November - December 2023.

**Want to Know More
About This Home?**

CONTACT OUR NEW HOME NAVIGATOR

NONE

Call Us @ 470.456.9551

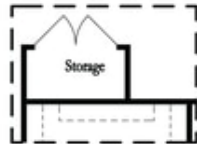


**Want to Know More
 About This Home?**

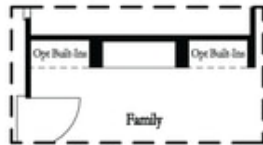
CONTACT OUR NEW HOME NAVIGATOR

NONE

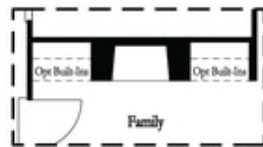
Call Us @ 470.456.9551



Optional Storage Room

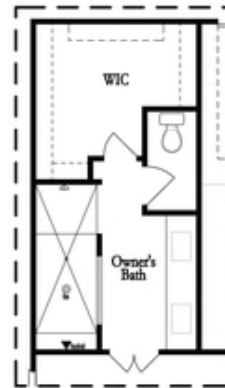


Optional Linear Fireplace



Optional Direct Vent Fireplace

First Floor Options



Optional Walk-Thru Shower

Second Floor Options

Want to Know More
About This Home?

CONTACT OUR NEW HOME NAVIGATOR

NONE

Call Us @ 470.456.9551