



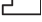




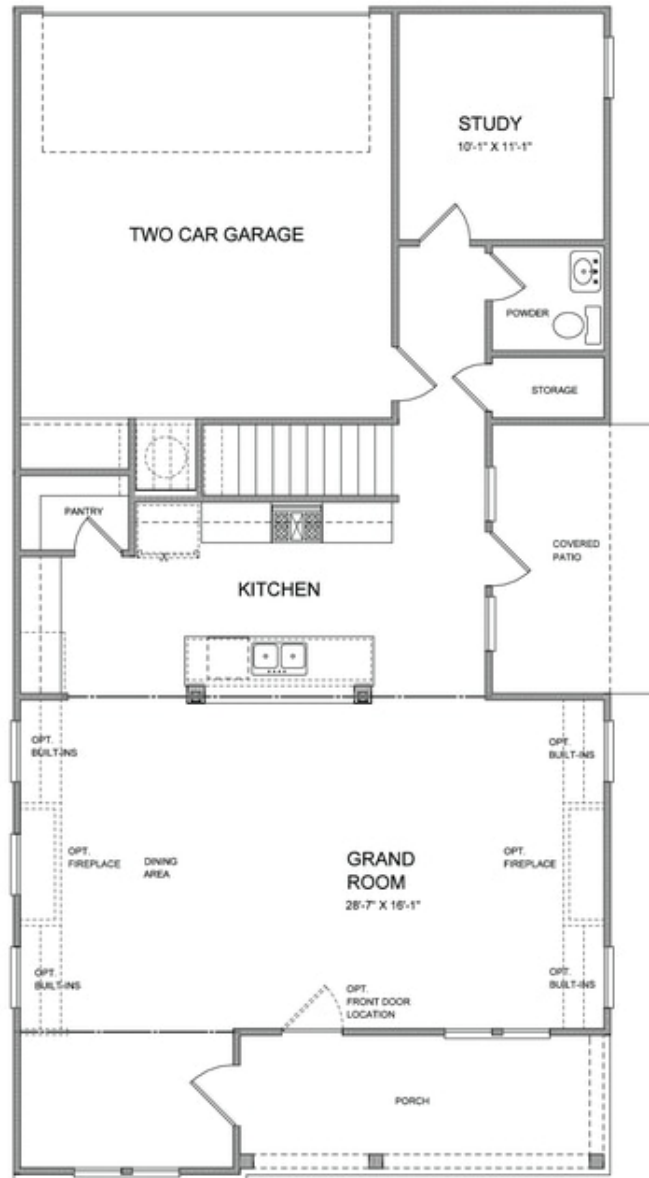
PRICED AT  
**\$563,050**

-  2483 Sq Ft
-  3 Beds
-  2.5 Baths
-  2 Car Garage
-  2.0 Story

Owens by The Providence Group - This beautifully crafted, open concept floor plan offers a welcoming foyer that opens up to a large Family Room, Dining Area and Kitchen! Study and Powder Room on the main level! Oversized kitchen island overlooks the Family Room! Upstairs you will enjoy an oversized Owner's Suite with his and her closets, Owner's Bath with separate vanities and two additional bedrooms joined by a Jack and Jill bathroom! Community amenities will include a gated entrance, cabana, pool, five pocket parks and access to County Park trails and a path to Peachtree Ridge Park! Ellington is also located within the desirable Peachtree Ridge School District and just a short 3 mile drive from the award winning Suwanee Town Center! Home is under construction and will be available for a March/April 2022 closing.

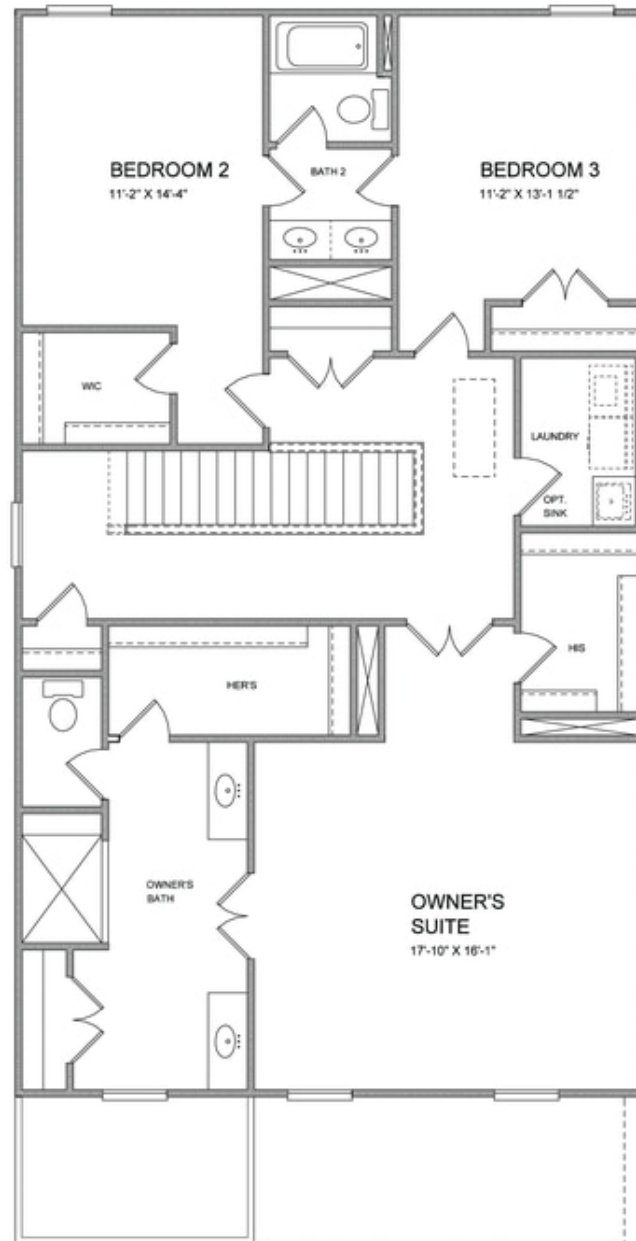
**Want to Know More  
About This Home?**

CONTACT OUR COMMUNITY SALES MANAGER  
Call Us @ 470.456.9551



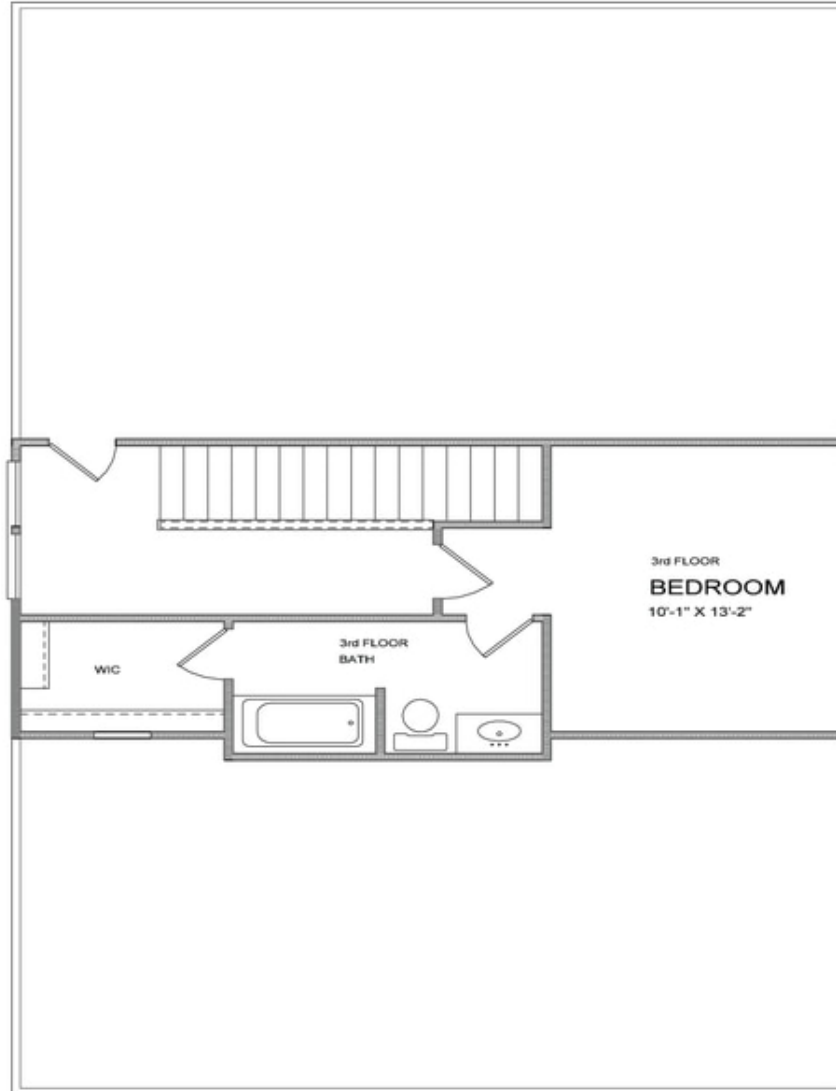
**Want to Know More  
About This Home?**

CONTACT OUR COMMUNITY SALES MANAGER  
Call Us @ 470.456.9551



**Want to Know More  
About This Home?**

CONTACT OUR COMMUNITY SALES MANAGER  
Call Us @ 470.456.9551



**Want to Know More  
About This Home?**

CONTACT OUR COMMUNITY SALES MANAGER  
Call Us @ 470.456.9551



OPTION  
 WHEN EXTERIOR STORAGE SHED



OPTION  
 WHEN EXTERIOR STORAGE and  
 INTERIOR CLOSET



OPTION  
 WHEN BEDROOM 4 and BATH 3



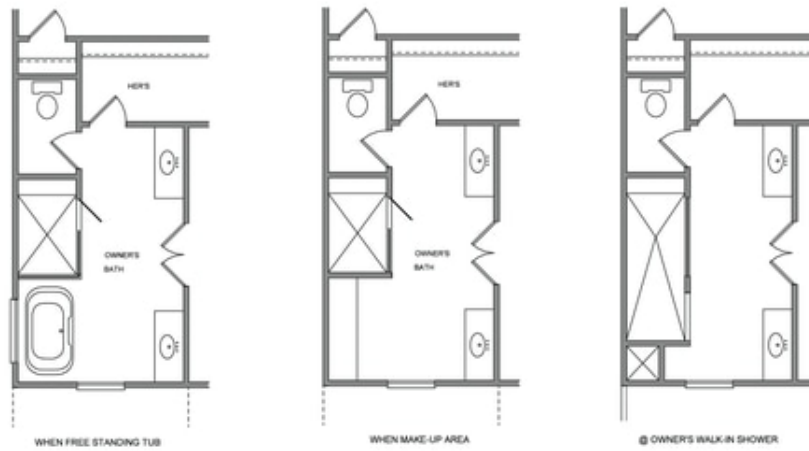
OPTION  
 WHEN P SLIDING GLASS DOOR



OPTION  
 WHEN COAT CLOSET

**Want to Know More  
 About This Home?**

CONTACT OUR COMMUNITY SALES MANAGER  
 Call Us @ 470.456.9551



**Want to Know More  
About This Home?**

CONTACT OUR COMMUNITY SALES MANAGER  
Call Us @ 470.456.9551