



PRICED AT
\$553,280

 2229 Sq Ft

 4 Beds

 3.0 Baths

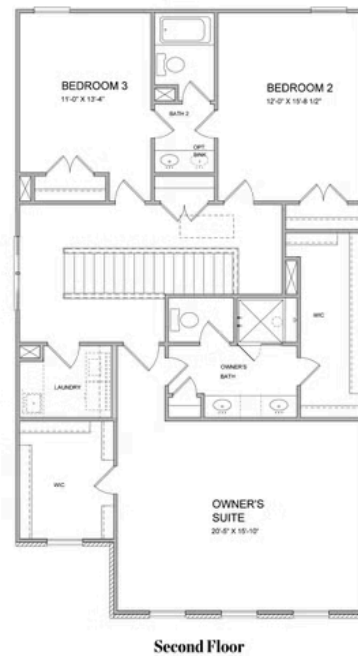
 2 Car Garage

 2.0 Story

Tensley by The Providence Group - This beautifully crafted, open concept floor plan offers a welcoming foyer that opens up to a large Family Room, Dining Area and Kitchen! Bedroom and Full Bath on the main level perfect for guests! Oversized kitchen island overlooks the Dining Area and Family Room! Upstairs you will enjoy an oversized Owner's Suite with his and her closets, Owner's Bath with dual vanities and two additional bedrooms joined by a Jack and Jill bathroom! Community amenities will include a gated entrance, cabana, pool, five pocket parks and access to County Park trails and a path to Peachtree Ridge Park! Ellington is also located within the desirable Peachtree Ridge School District and just a short 3 mile drive from the award winning Suwanee Town Center! Home is under construction and will be available for a March/April 2022 closing. *Photos are not actual home but of previously built Tensley floorplan.

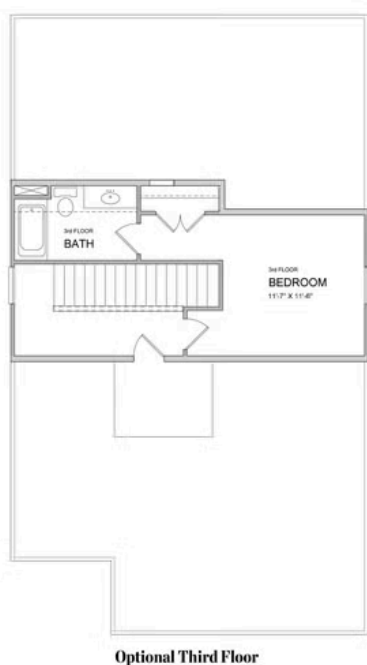
Want to Know More
About This Home?

CONTACT OUR COMMUNITY SALES MANAGER
Call Us @ 470.456.9551



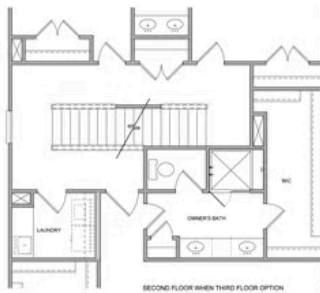
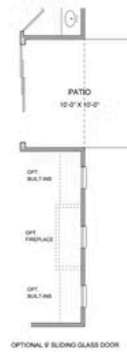
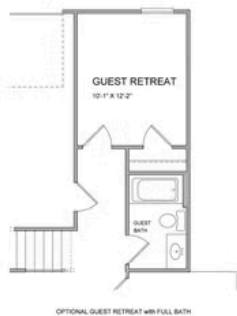
Want to Know More
About This Home?

CONTACT OUR COMMUNITY SALES MANAGER
Call Us @ 470.456.9551



Want to Know More
About This Home?

CONTACT OUR COMMUNITY SALES MANAGER
Call Us @ 470.456.9551



All Options

Want to Know More
About This Home?

CONTACT OUR COMMUNITY SALES MANAGER
Call Us @ 470.456.9551