



PRICED AT
\$534,615

 2483 Sq Ft

 4 Beds

 3.0 Baths

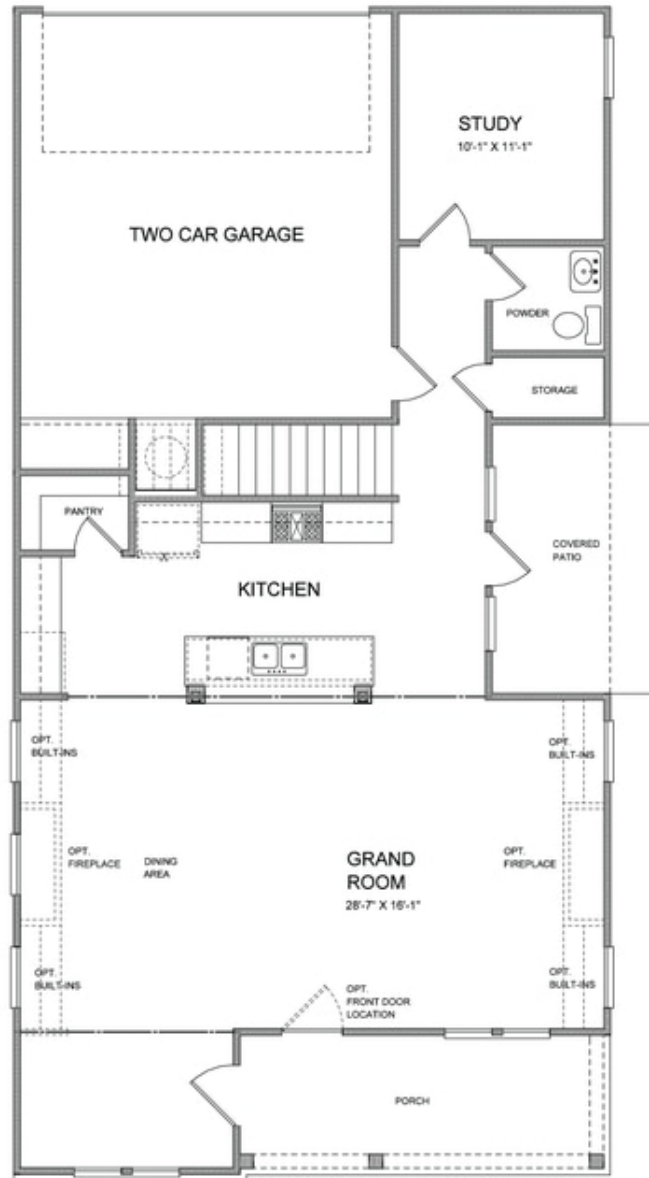
 2 Car Garage

 2.0 Story

Owens by The Providence Group - This beautifully crafted, open concept floor plan offers a welcoming foyer that opens up to a large Family Room, Dining Area and Kitchen! Bedroom and Full Bath on the main level perfect for guests! Oversized kitchen island overlooks the Family Room! Upstairs you will enjoy an oversized Owner's Suite with his and her closets, Owner's Bath with separate vanities and two additional bedrooms joined by a Jack and Jill bathroom! Community amenities will include a gated entrance, cabana, pool, five pocket parks and access to County Park trails and a path to Peachtree Ridge Park! Ellington is also located within the desirable Peachtree Ridge School District and just a short 3 mile drive from the award winning Suwanee Town Center! Home is under construction and will be available for a February 2022 closing.

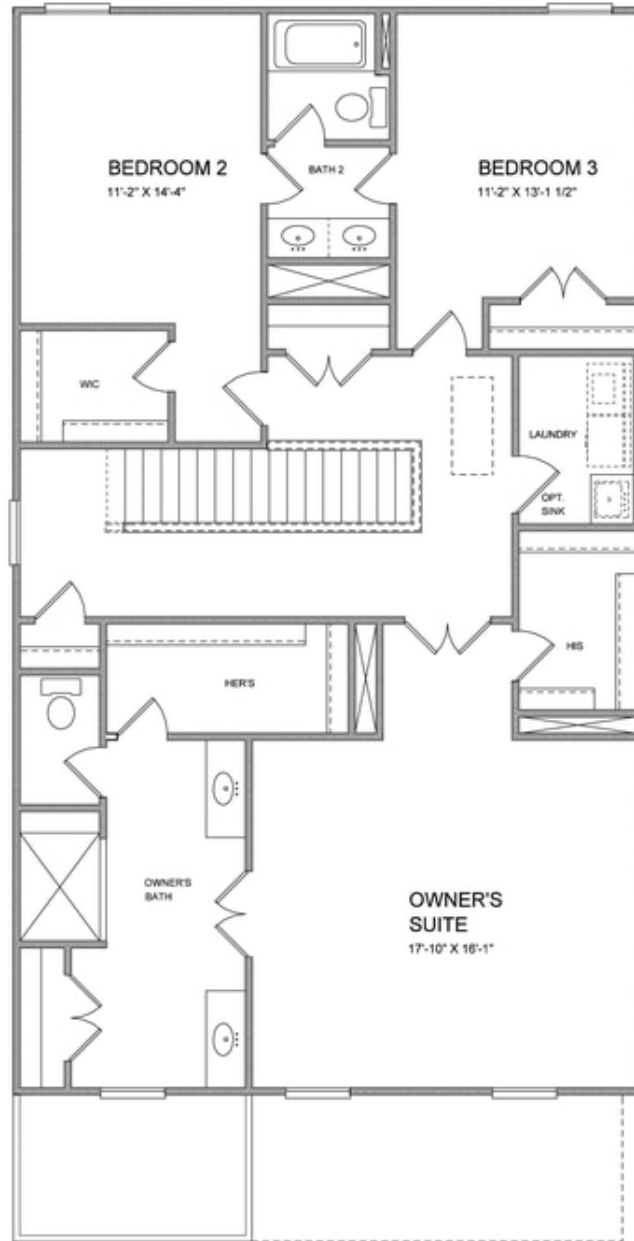
**Want to Know More
About This Home?**

CONTACT OUR COMMUNITY SALES MANAGER
Call Us @ 470.456.9551



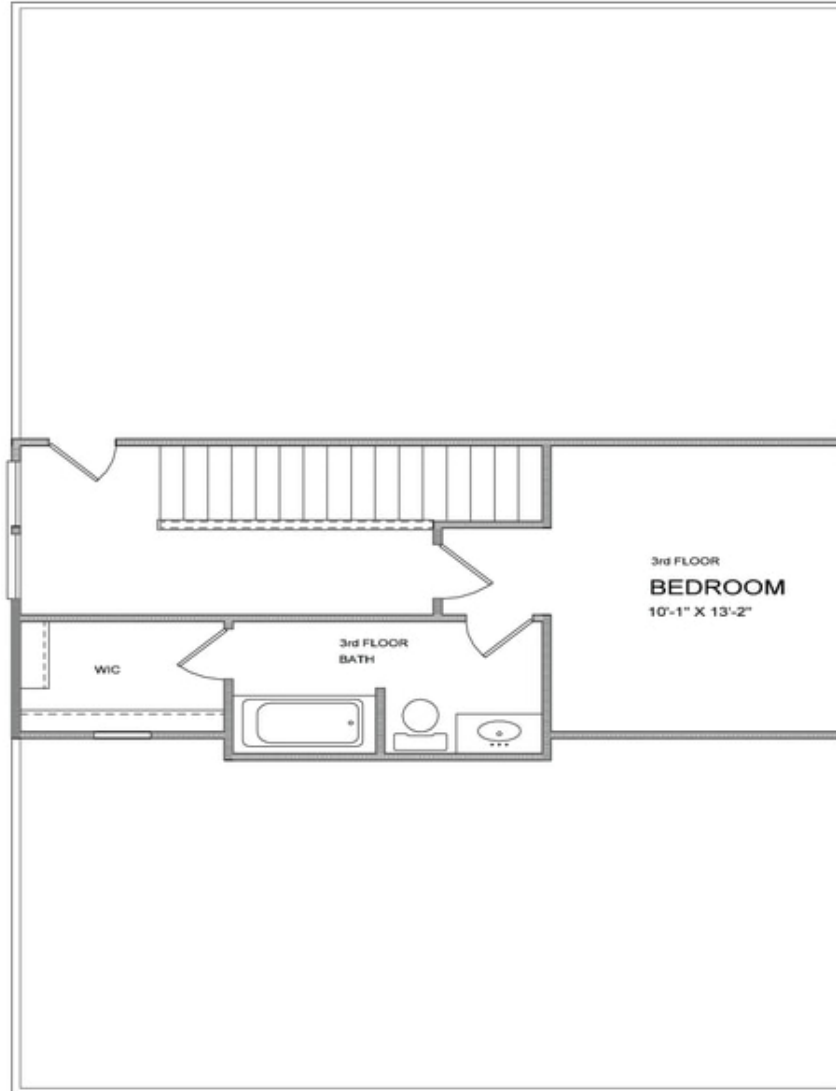
**Want to Know More
About This Home?**

CONTACT OUR COMMUNITY SALES MANAGER
Call Us @ 470.456.9551



**Want to Know More
About This Home?**

CONTACT OUR COMMUNITY SALES MANAGER
Call Us @ 470.456.9551



**Want to Know More
About This Home?**

CONTACT OUR COMMUNITY SALES MANAGER
Call Us @ 470.456.9551



OPTION
 WHEN EXTERIOR STORAGE SHED



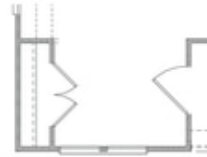
OPTION
 WHEN EXTERIOR STORAGE and
 INTERIOR CLOSET



OPTION
 WHEN BEDROOM 4 and BATH 3



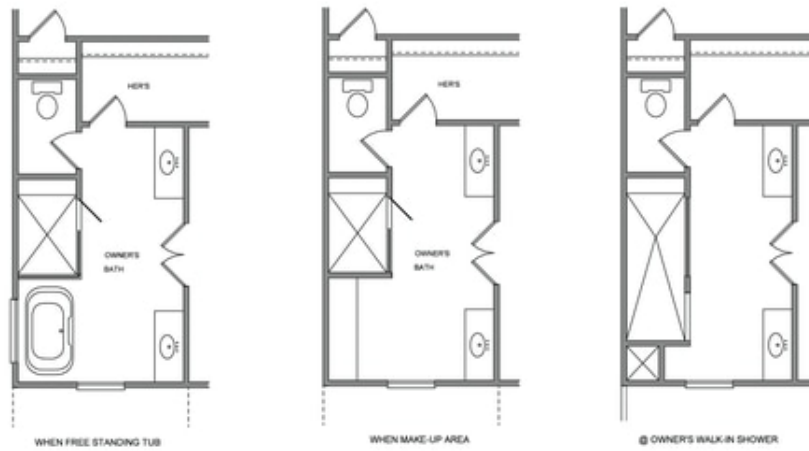
OPTION
 WHEN P SLIDING GLASS DOOR



OPTION
 WHEN COAT CLOSET

**Want to Know More
 About This Home?**

CONTACT OUR COMMUNITY SALES MANAGER
 Call Us @ 470.456.9551



**Want to Know More
About This Home?**

CONTACT OUR COMMUNITY SALES MANAGER
Call Us @ 470.456.9551