



PRICED AT
\$652,800

 2734 Sq Ft

 5 Beds

 3.0 Baths

 2 Car Garage

 2.0 Story

Welcome Home to this beautiful open concept floor plan featuring 10' ceilings on the main floor and a guest retreat and full bath. Additionally, there are French doors that open into a separate study. The gourmet kitchen has plenty of cabinets, Stainless Steel Appliances, pantry & an oversized island with views to family and dining rooms. The owners suite is very spacious and has a large walk-in closet. Enjoy the Spa-like Bath offering a dual vanity, large soaking tub and walk-in shower. Also on the upper floor is an awesome loft area for extra tv watching, 3 additional bedrooms, bathrooms and laundry. Community Amenities will include a gated entrance, clubhouse, pool, playground, five pocket parks and access to County park trails and a path to Peachtree Ridge Park. Ellington is located within the desirable Peachtree Ridge School District and just a short 3 mile drive from the award winning Suwanee Towne Center! Come in now and you can pick out your interior selections and make this one your own!!! This home is to be built, with estimated completion: Fall 2023 Pictures are same floorplan but NOT actual home.

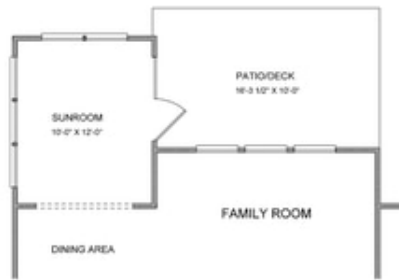
**Want to Know More
About This Home?**

CONTACT OUR COMMUNITY SALES MANAGER
Call Us @ 470.456.9551

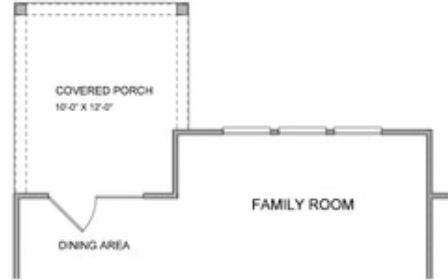


**Want to Know More
About This Home?**

CONTACT OUR COMMUNITY SALES MANAGER
Call Us @ 470.456.9551



Opt. Sunroom



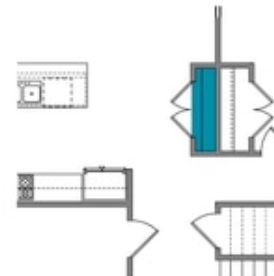
Opt. Covered Porch



Opt. Fireplace



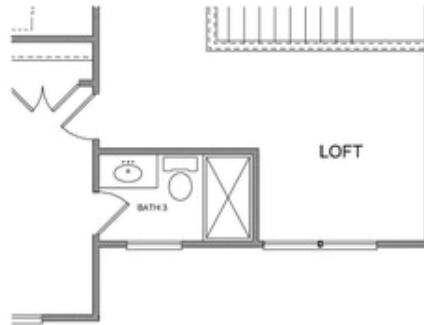
Opt. Rear Fireplace



Opt. Pantry

Want to Know More
About This Home?

CONTACT OUR COMMUNITY SALES MANAGER
Call Us @ 470.456.9551



Opt. 3rd Bath



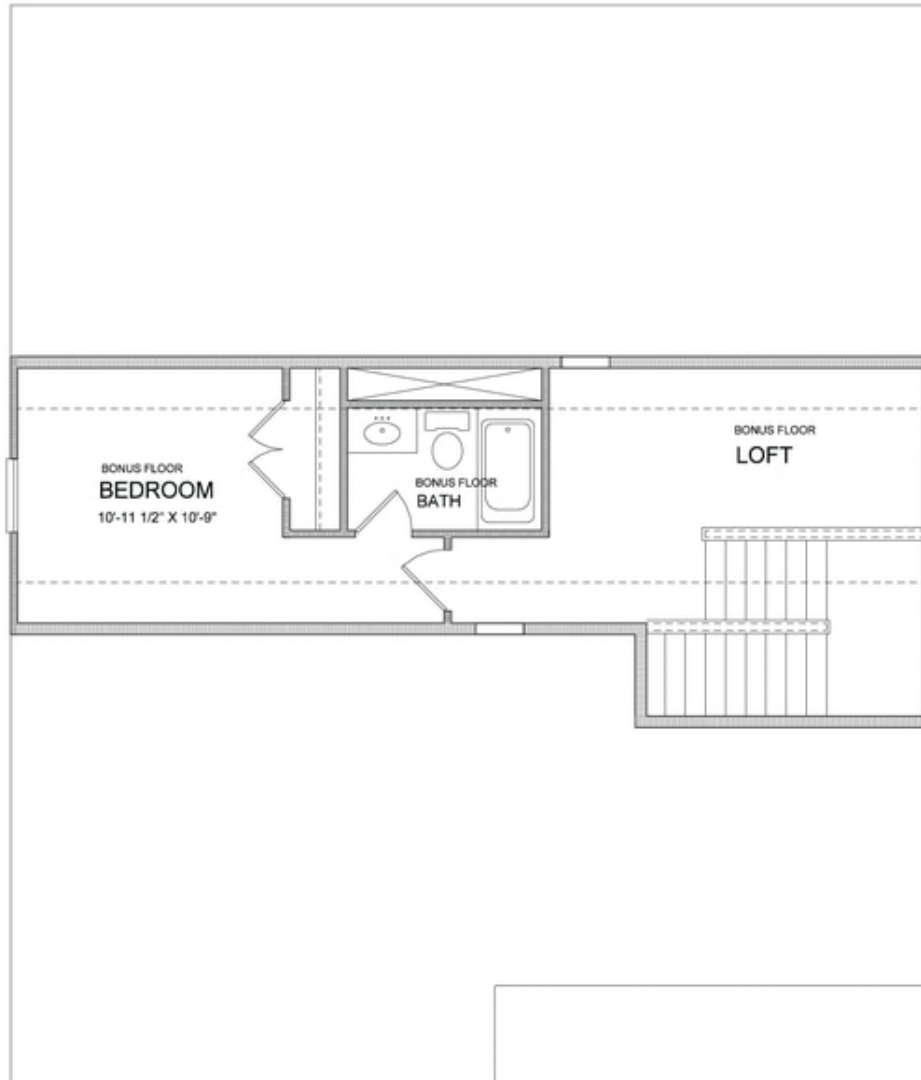
Opt. Owner's Sitting Room



Opt. Owner's Walk-in Shower

Want to Know More
About This Home?

CONTACT OUR COMMUNITY SALES MANAGER
Call Us @ 470.456.9551



**Want to Know More
About This Home?**

CONTACT OUR COMMUNITY SALES MANAGER
Call Us @ 470.456.9551