



PRICED AT
\$670,550

 **2518 Sq Ft**

 **4 Beds**

 **3.0 Baths**

 **2 Car Garage**

 **2.0 Story**

Elevate your life with a new home by The Providence Group and \$5,000 towards closing cost when financing with one of Seller's 4 preferred lenders! Extremely popular Kincaid layout with 10' ceilings on the main to be built at Ellington! Chef's Kitchen with plenty of cabinets, walk-in Pantry, Stainless Steel Appliances opens to Family and Dining. Bedroom with Full Bath on main that can also be used as an Office/Den. Partially covered patio at private courtyard is great for entertaining. Owner's suite at second floor featuring soaking tub, walk-in shower, his and hers vanities and oversized walk-in closet. A covered deck off the master to sit and enjoy your morning coffee. Two additional Bedrooms at second floor with jack-n-jill Bath. Laundry room and Loft conveniently located on the same level as Owner's Suite. Personalize your new Home by selecting finishes at our state of the art Design Studio! Community Amenities include a gated entrance, club house, pool, playground, five pocket parks, access to a county park trails and a walking path to Peachtree Ridge Park. Ellington is located within the desirable Peachtree Ridge School District and just a short 3 mile drive from the award winning Suwanee Towne Center! This ...

Want to Know More
About This Home?

CONTACT OUR COMMUNITY SALES MANAGER
Call Us @ 470.456.9551



Want to Know More
About This Home?

CONTACT OUR COMMUNITY SALES MANAGER
Call Us @ 470.456.9551



Second Floor

Want to Know More
About This Home?

CONTACT OUR COMMUNITY SALES MANAGER
Call Us @ 470.456.9551

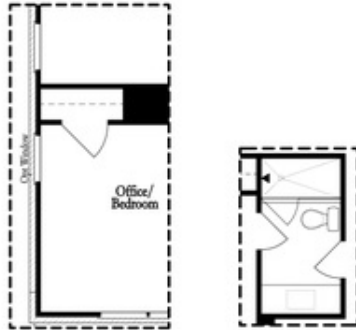


Optional Third Floor

Want to Know More
About This Home?

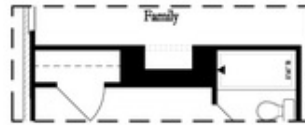
CONTACT OUR COMMUNITY SALES MANAGER
Call Us @ 470.456.9551

Options



Opt Left Side Window @ Office/Bedroom

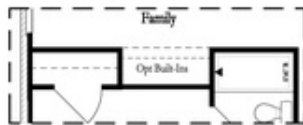
Opt Shower @ Bath 3



Opt Linear Fireplace



Opt Fireplace



Opt Nook

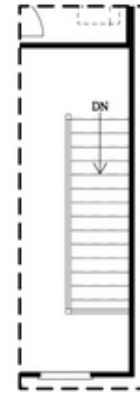


Opt Closet

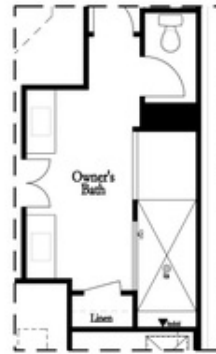
First Floor Options



Opt Left Side Window @ Bedroom 3



Opt Open Rail



Opt Walk-Thru Shower



Opt Tub/Shower Combo

Second Floor Options

Want to Know More
About This Home?

CONTACT OUR COMMUNITY SALES MANAGER
Call Us @ 470.456.9551