



PRICED AT
\$795,400

 2888 Sq Ft

 4 Beds

 3.0 Baths

 2 Car Garage

 3.0 Story

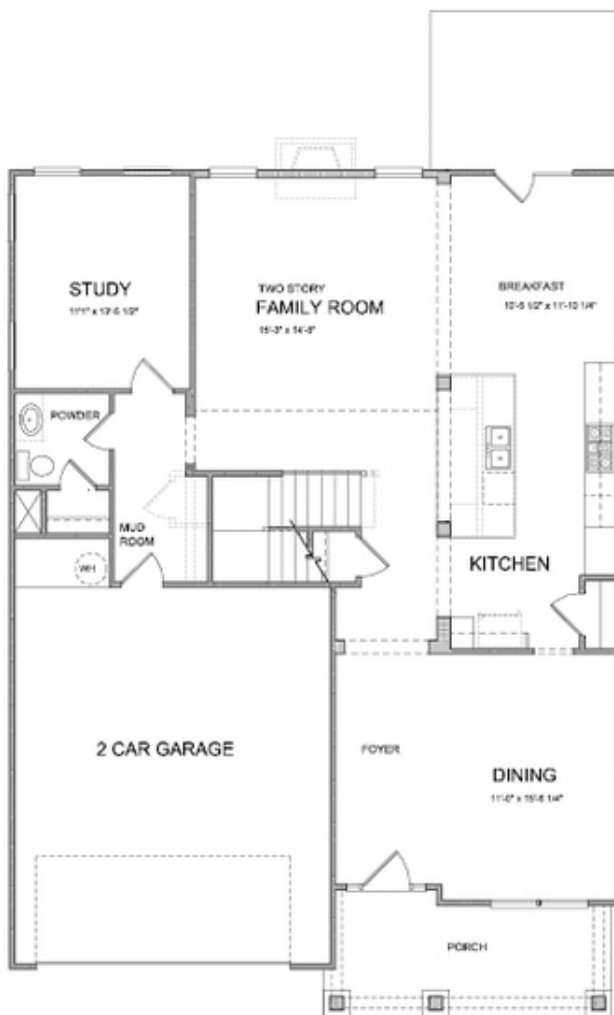
Unfinished basement home located on a cul-de-sac. This open floor plan is perfect for entertaining & features a 2-story family room, breakfast area, separate dining room & beautiful gourmet kitchen. The kitchen offers a large island with stainless appliances & quartz countertops. You will also find a guest retreat on the main floor. The beautiful owners suite is located on the 2nd floor & has huge his/hers closets, dual vanities and a large, frameless shower and separate tub. Upstairs you will find 2 additional bedrooms with secondary bathroom. There is still time to visit our magnificent design center and put your personal touches on this one!!! Community Amenities include a gated entrance, clubhouse, pool, playground, five pocket parks and access to County park trails and a path to Peachtree Ridge Park. Ellington is located within the desirable Peachtree Ridge School District and just a short 3 mile drive from the award winning Suwanee Towne Center! Come in now and you can pick out your interior selections and make this one your own!!! Up to \$5k closing cost incentive with use of one of the Preferred Lenders - Ameris Bank, Capital City Home Loans, New American Funding, Renasant Bank, and Prime ...

**Want to Know More
About This Home?**

CONTACT OUR NEW HOME NAVIGATOR

NONE

Call Us @ 470.456.9551

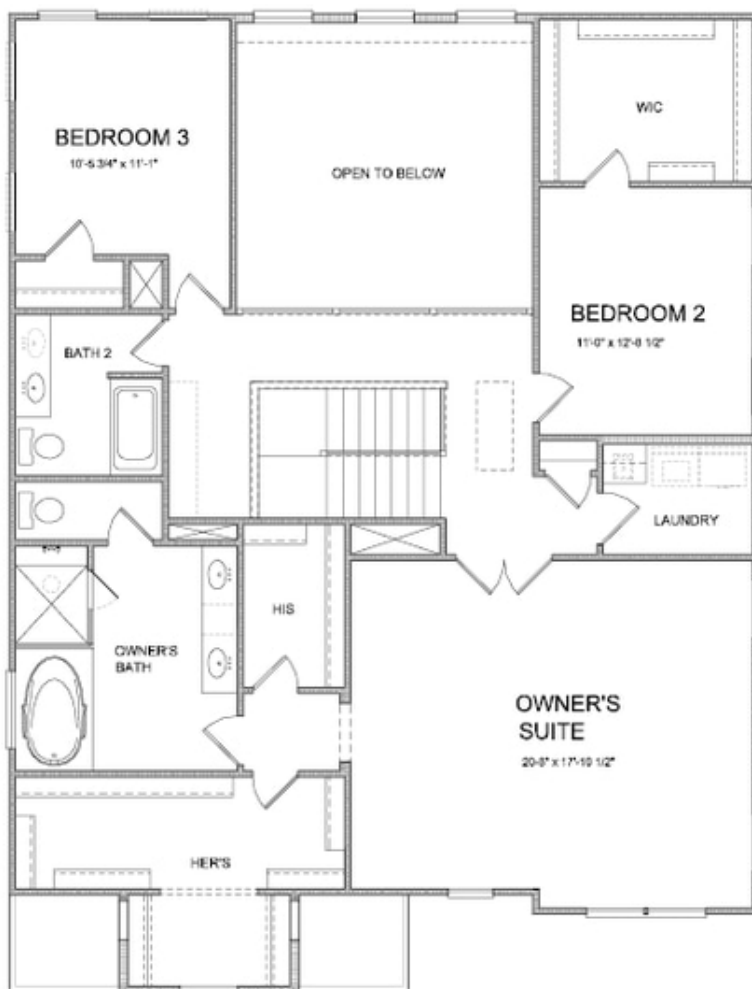


Want to Know More
About This Home?

CONTACT OUR NEW HOME NAVIGATOR

NONE

Call Us @ 470.456.9551



Want to Know More
About This Home?

CONTACT OUR NEW HOME NAVIGATOR

NONE

Call Us @ 470.456.9551

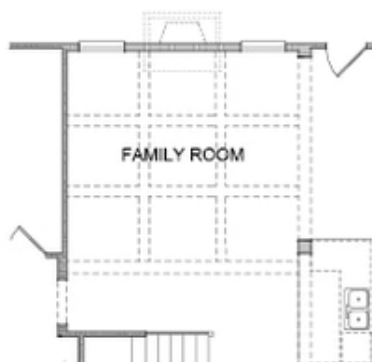


Want to Know More
About This Home?

CONTACT OUR NEW HOME NAVIGATOR

NONE

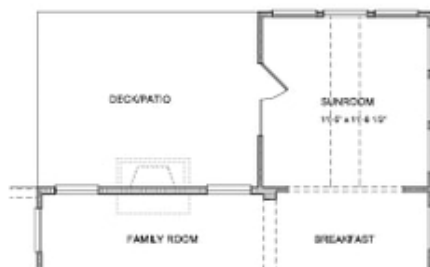
Call Us @ 470.456.9551



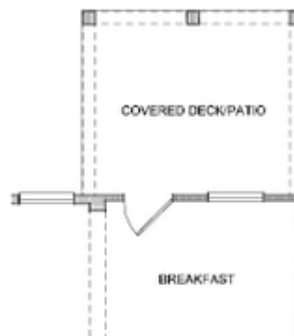
Opt. Coffered Ceilings
w/ Opt. Media Room or Bedroom 5 above



Opt. Bedroom 4 w/ Full Bath
No Study & Power Room



Opt. Sunroom



Opt. Covered Deck/Patio

Want to Know More
About This Home?

CONTACT OUR NEW HOME NAVIGATOR

NONE

Call Us @ 470.456.9551



Opt. Full Bath 3
on Bedroom 2



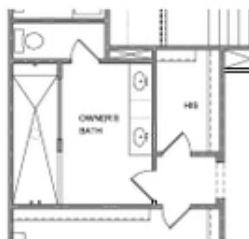
Opt. In-Law Suite on
Bedroom 3



Opt. Bedroom 5
to Open Ceiling on Family Room



Opt. Bedroom 5 w/ Full Bath
to Open Ceiling on Family Room



Opt. Walk-In Shower



Opt. Media Room
to Open Ceiling on Family Room

Want to Know More
About This Home?

CONTACT OUR NEW HOME NAVIGATOR

NONE

Call Us @ 470.456.9551