



PRICED AT
\$769,915

 3922 Sq Ft

 5 Beds

 4.5 Baths

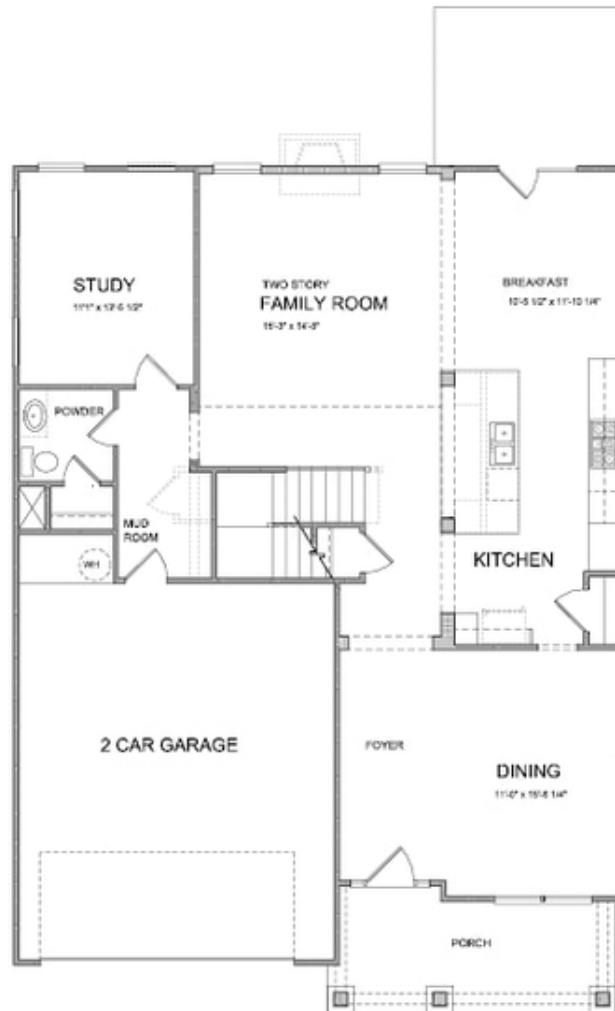
 2 Car Garage

 3.0 Story

Calhoun A - Located on a cul-de-sac, this open floor plan is perfect for entertaining & features a family room, breakfast room, separate dining room & beautiful gourmet kitchen. The kitchen offers a large island with a stainless farmsink, stainless appliances & quartz countertops. The owners suite suite is located on the 2nd floor & has his/hers closets, dual vanities in the owners bath & a large, frameless shower. 2 additional bedrooms with private baths & a media room. 3rd floor bonus room & private bedroom/bath. Community Amenities will include a gated entrance, cabana, pool, five pocket parks and access to County park trails and a path to Peachtree Ridge Park. Ellington is located within the desirable Peachtree Ridge School District and just a short 3 mile drive from the award winning Suwanee Towne Center! Home under construction. Estimated closing time frame is Oct/Nov. Pictures are same floorplan but NOT actual home.

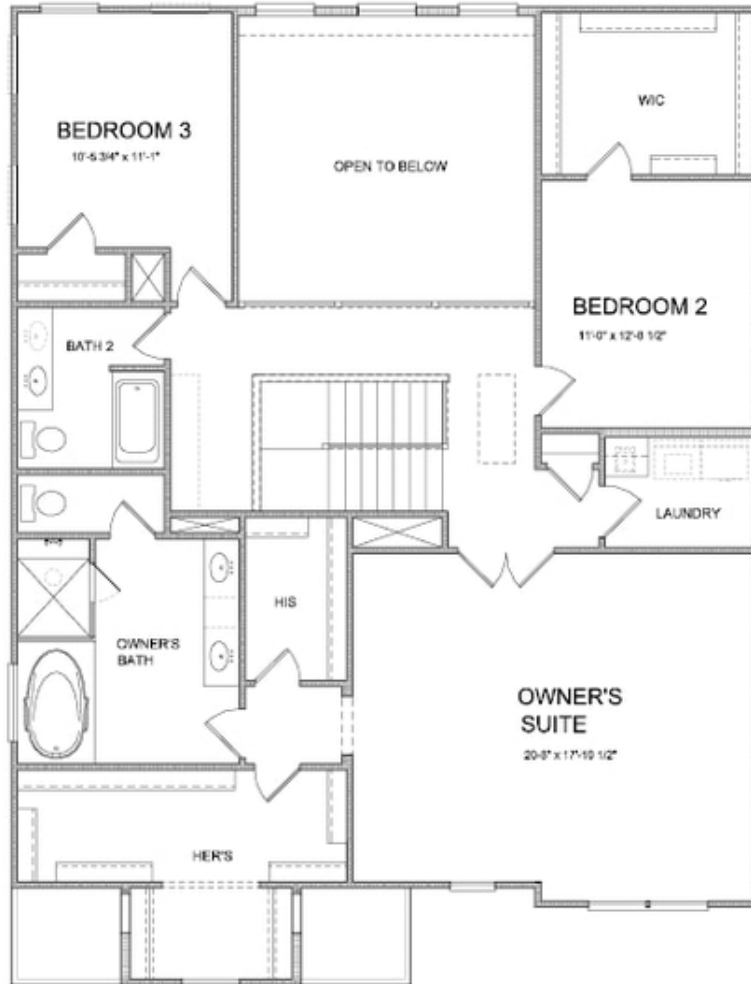
**Want to Know More
About This Home?**

CONTACT OUR COMMUNITY SALES MANAGER
Call Us @ 470.456.9551



**Want to Know More
About This Home?**

CONTACT OUR COMMUNITY SALES MANAGER
Call Us @ 470.456.9551



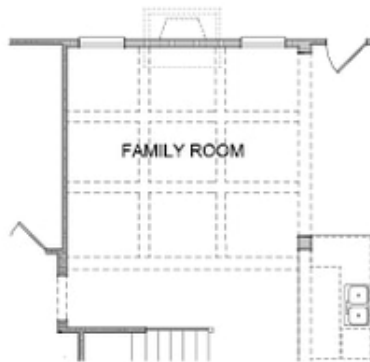
**Want to Know More
About This Home?**

CONTACT OUR COMMUNITY SALES MANAGER
Call Us @ 470.456.9551



**Want to Know More
About This Home?**

CONTACT OUR COMMUNITY SALES MANAGER
Call Us @ 470.456.9551



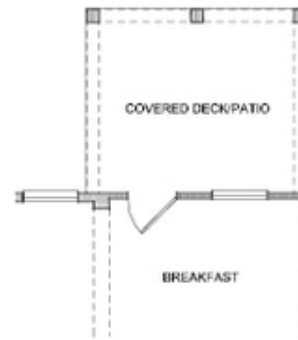
*Opt. Coffered Ceilings
 w/ Opt. Media Room or Bedroom 5 above*



*Opt. Bedroom 4 w/ Full Bath
 & Study & Power Room*



Opt. Sunroom



Opt. Covered Deck/Patio

**Want to Know More
 About This Home?**

CONTACT OUR COMMUNITY SALES MANAGER
 Call Us @ 470.456.9551



Opt. Full Bath 3
 on Bedroom 2



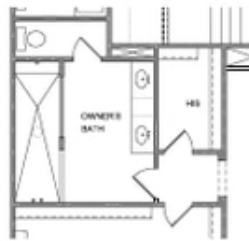
Opt. In-Law Suite on
 Bedroom 3



Opt. Bedroom 5
 w/ Open Ceiling on Family Room



Opt. Bedroom 5 w/ Full Bath
 w/ Open Ceiling on Family Room



Opt. Walk-In Shower



Opt. Media Room
 w/ Open Ceiling on Family Room

**Want to Know More
 About This Home?**

CONTACT OUR COMMUNITY SALES MANAGER
 Call Us @ 470.456.9551