




PRICED AT  
**\$784,780**

 2734 Sq Ft

 5 Beds

 3.0 Baths

 2 Car Garage

 2.0 Story

Don't miss out on this opportunity to build your DREAM HOME at Ellington! This home is last basement lot available in the community! Beautiful open concept floor plan features 10' ceilings on the main, separate Study and Guest en-suite with Full Bath & walk-in shower. Cooking is a breeze at Chef's kitchen featuring double ovens, large island, pantry and plenty of cabinet storage. Dining area opens to Deck for outdoor BBQ's and guest entertaining. Light filled Family room offers a warm fireplace for cozy Family get togethers! With 9 ft ceilings on the 2nd floor, you will find 3 additional secondary bedrooms with Full Bathroom in the hall. Owner's Suite offers dual vanity, walk-in shower, soaking tub and an oversized walk-in closet. Great home to make yours today - Hurry to pick your Design Finishes! Close to 4 vibrant downtown areas including Duluth, Suwannee, Buford, and Sugar Hill! Community offers swim/clubhouse, playground, Five community parks and direct pathway to Peachtree Ridge Park! A Master Planned Community with you in mind! This home is to be built - with estimated move-in: Summer 2023

**Want to Know More  
About This Home?**

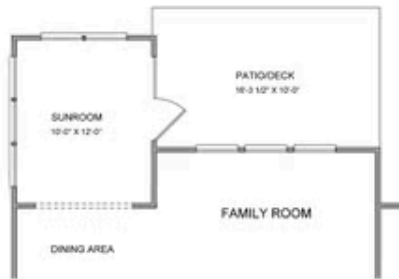
CONTACT OUR COMMUNITY SALES MANAGER  
Call Us @ 470.456.9551



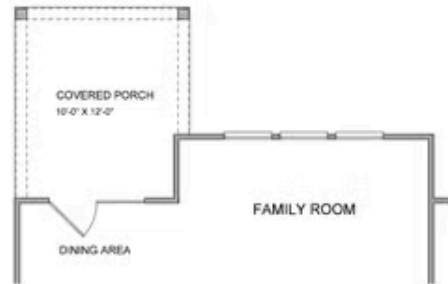
Want to Know More  
About This Home?

CONTACT OUR COMMUNITY SALES MANAGER  
Call Us @ 470.456.9551





*Opt. Sunroom*



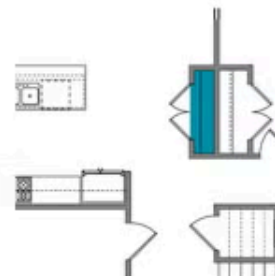
*Opt. Covered Porch*



*Opt. Fireplace*



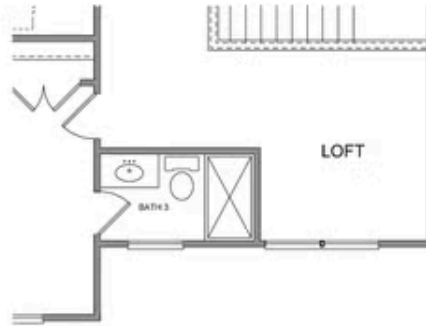
*Opt. Rear Fireplace*



*Opt. Pantry*

Want to Know More  
About This Home?

CONTACT OUR COMMUNITY SALES MANAGER  
Call Us @ 470.456.9551



*Opt. 3rd Bath*



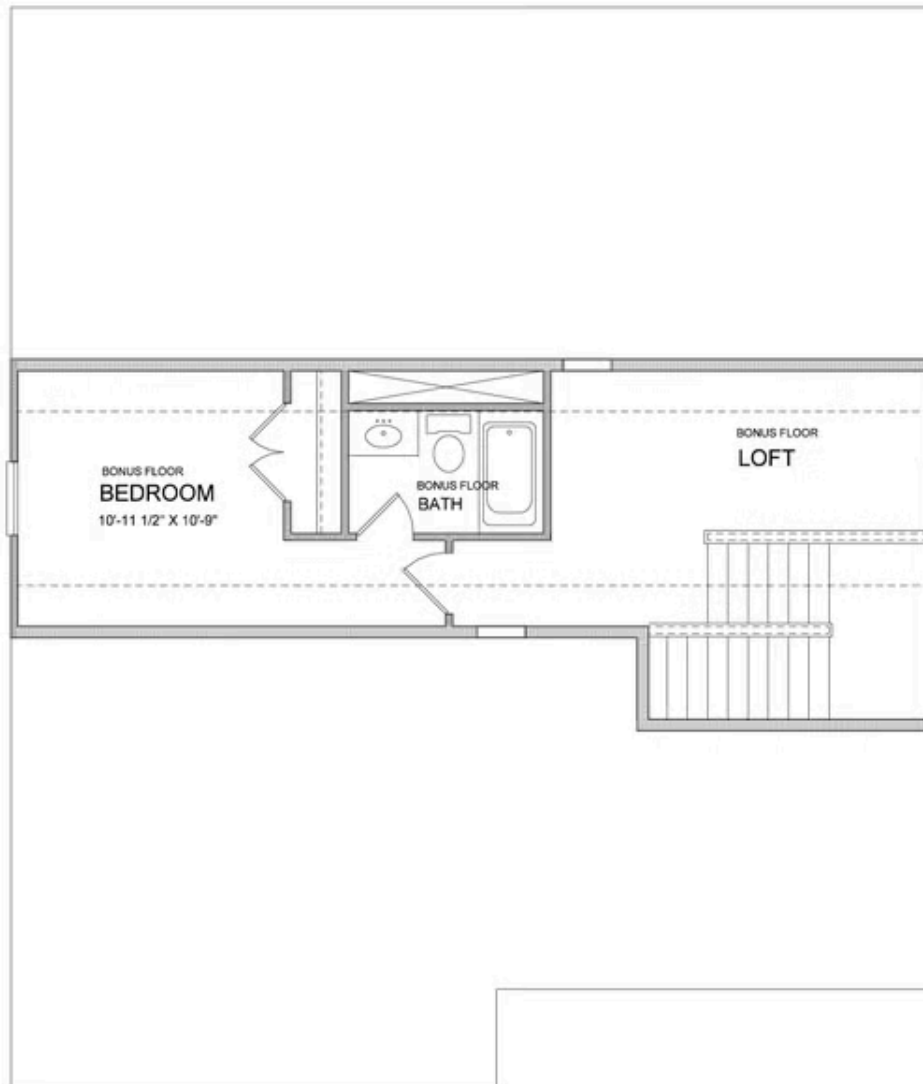
*Opt. Owner's Sitting Room*



*Opt. Owner's Walk-in Shower*

Want to Know More  
About This Home?

CONTACT OUR COMMUNITY SALES MANAGER  
Call Us @ 470.456.9551



Want to Know More  
About This Home?

CONTACT OUR COMMUNITY SALES MANAGER  
Call Us @ 470.456.9551