



PRICED AT
\$642,400

 2594 Sq Ft

 4 Beds

 3.0 Baths

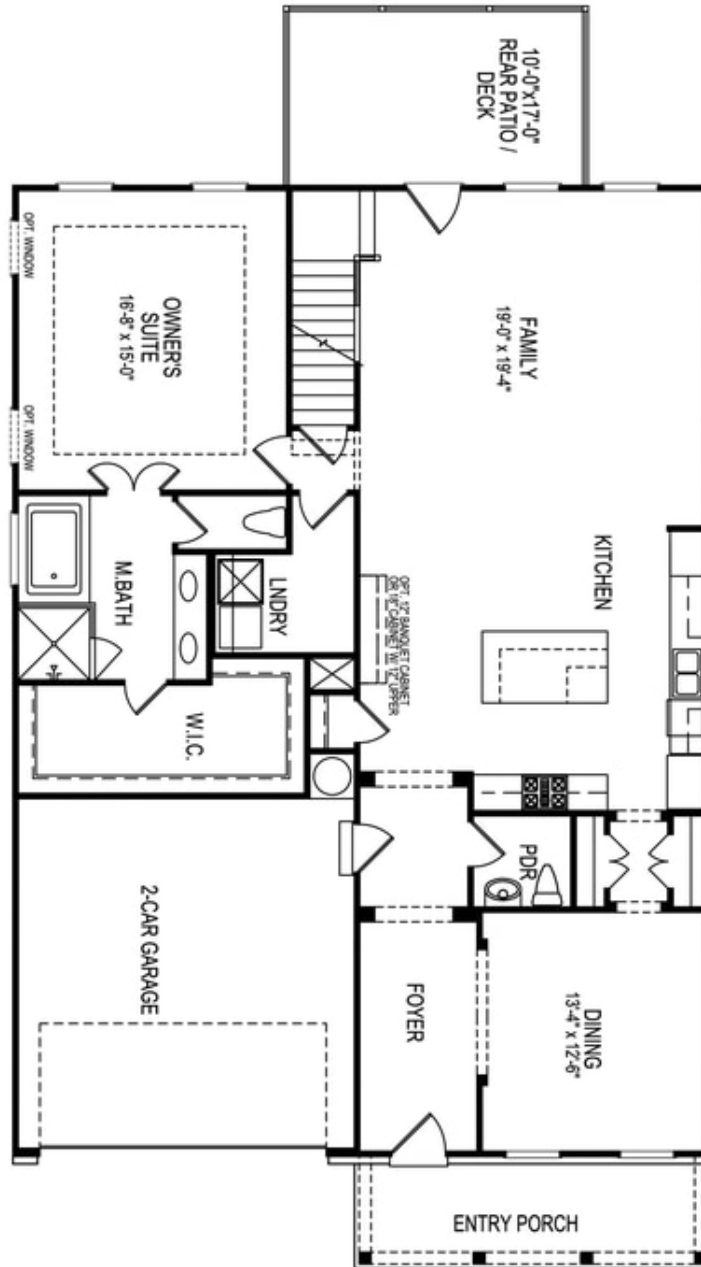
 2 Car Garage

 2.0 Story

Madilyn C - this open floor plan is perfect for entertaining & features a family room, breakfast room, separate dining room & beautiful gourmet kitchen. The kitchen offers a large island with stainless appliances & quartz countertops. The owners suite is located on the 1st floor with dual vanities in the owners bath & a large, frameless shower. 2 additional bedrooms and a loft on the 2nd floor. Community Amenities will include a gated entrance, cabana, pool, five pocket parks and access to County park trails and a path to Peachtree Ridge Park. Ellington is located within the desirable Peachtree Ridge School District and just a short 3 mile drive from the award winning Suwanee Towne Center! Home under construction. Pictures are same floorplan but NOT actual home.

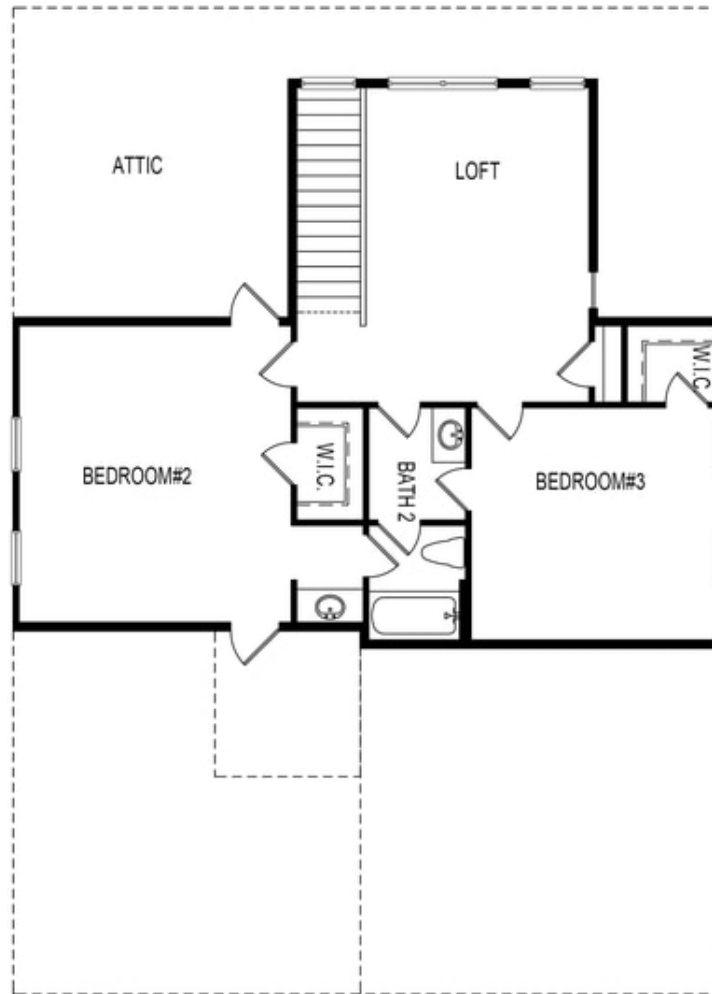
**Want to Know More
About This Home?**

CONTACT OUR COMMUNITY SALES MANAGER
Call Us @ 470.456.9551



Want to Know More
 About This Home?

CONTACT OUR COMMUNITY SALES MANAGER
 Call Us @ 470.456.9551

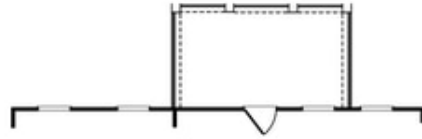


Second Floor

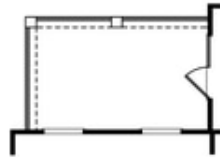
**Want to Know More
About This Home?**

CONTACT OUR COMMUNITY SALES MANAGER
Call Us @ 470.456.9551

Options



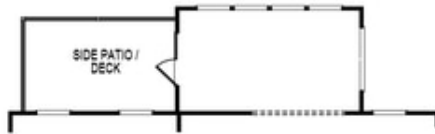
OPT Covered Patio/Deck



OPT Covered Side Patio/Deck



OPT Fireplace
 w. Opt Built-Ins



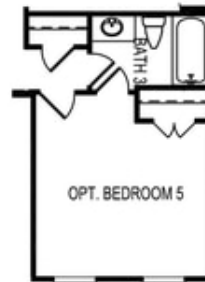
OPT Sunroom



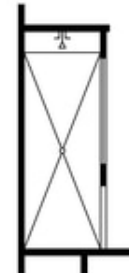
OPT Butler's Pantry



OPT Bedroom 4 ilo Loft



OPT Bedroom 5
 ilo Dining Room



OPT Owner's
 Walk-In Shower

**Want to Know More
 About This Home?**

CONTACT OUR COMMUNITY SALES MANAGER
 Call Us @ 470.456.9551