



PRICED AT
\$785,380

 3650 Sq Ft

 5 Beds

 4.0 Baths

 2 Car Garage

 3.0 Story

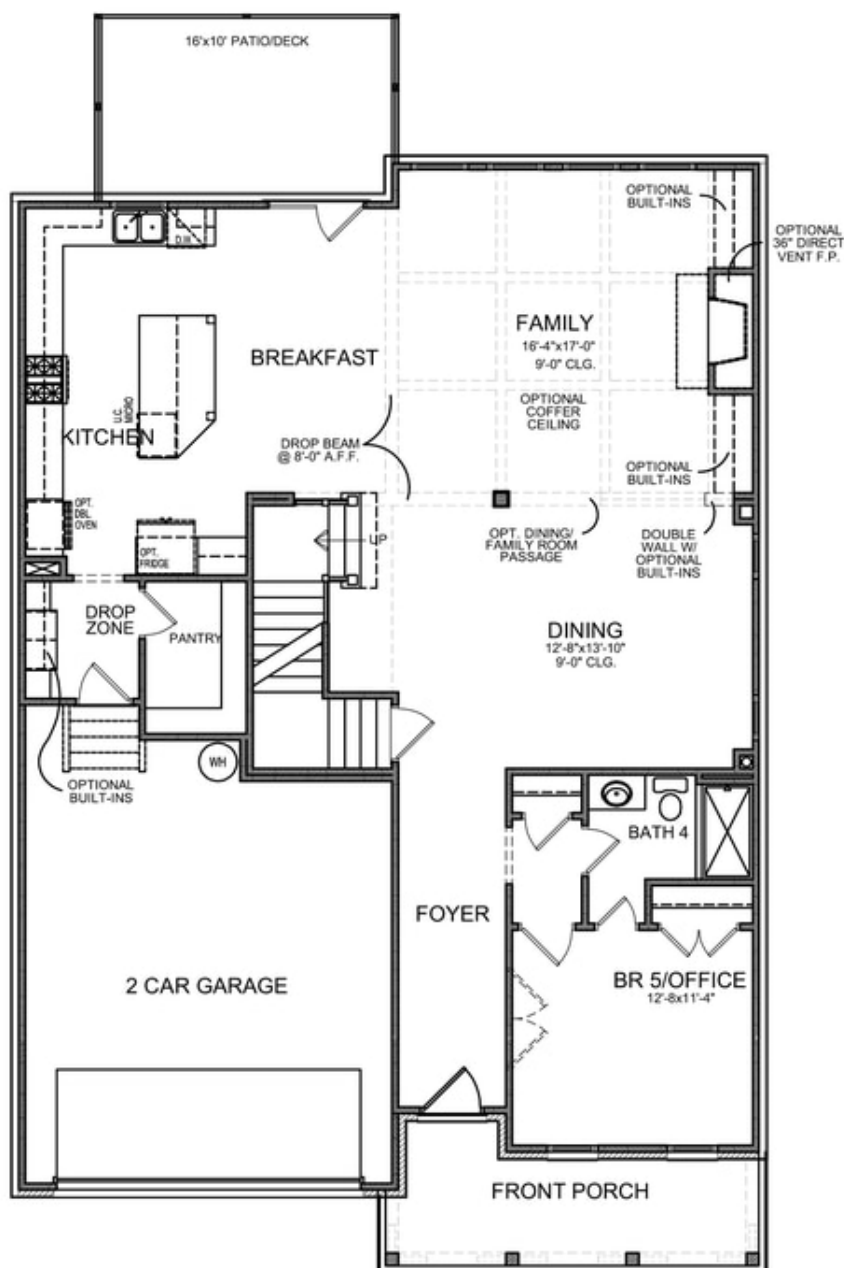
Elevate Your Life in 2023. New Plans New Pricing + \$20K Any Way you want it for contract written by 2/28/2023 and closed by 3/31/2023. Must see this sought after layout built by The Providence Group! Light filled main floor with 10' ceilings on the main, Extended Kitchen with oversized Island, Stainless Steel Appliances, plenty of cabinets and walk-in Pantry. Sunroom leads to a Private wooded Backyard. Formal Dining Room and Full Bed/Bath on Main. Spacious Primary Suite with His & Hers walk-in closet and Spa-like Bath with separate vanities, soaking tub and walk-in shower. Jack-n-Jill Bathroom with walk-in shower is shared between two secondary bedrooms, plus another Bedroom with attached Full Bath and Walk-in Closet. Community Amenities will include a gated entrance, clubhouse, pool, playground, five pocket parks and access to County park trails and a path to Peachtree Ridge Park. Ellington is located within the desirable Peachtree Ridge School District and just a short 3 mile drive from the award winning Suwanee Towne Center! Home under construction. Up to \$20k in closing costs with one of our Preferred Lenders. Ask for details. Pictures are same floorplan but NOT actual home.

**Want to Know More
About This Home?**

CONTACT OUR NEW HOME NAVIGATOR

NONE

Call Us @ 470.456.9551

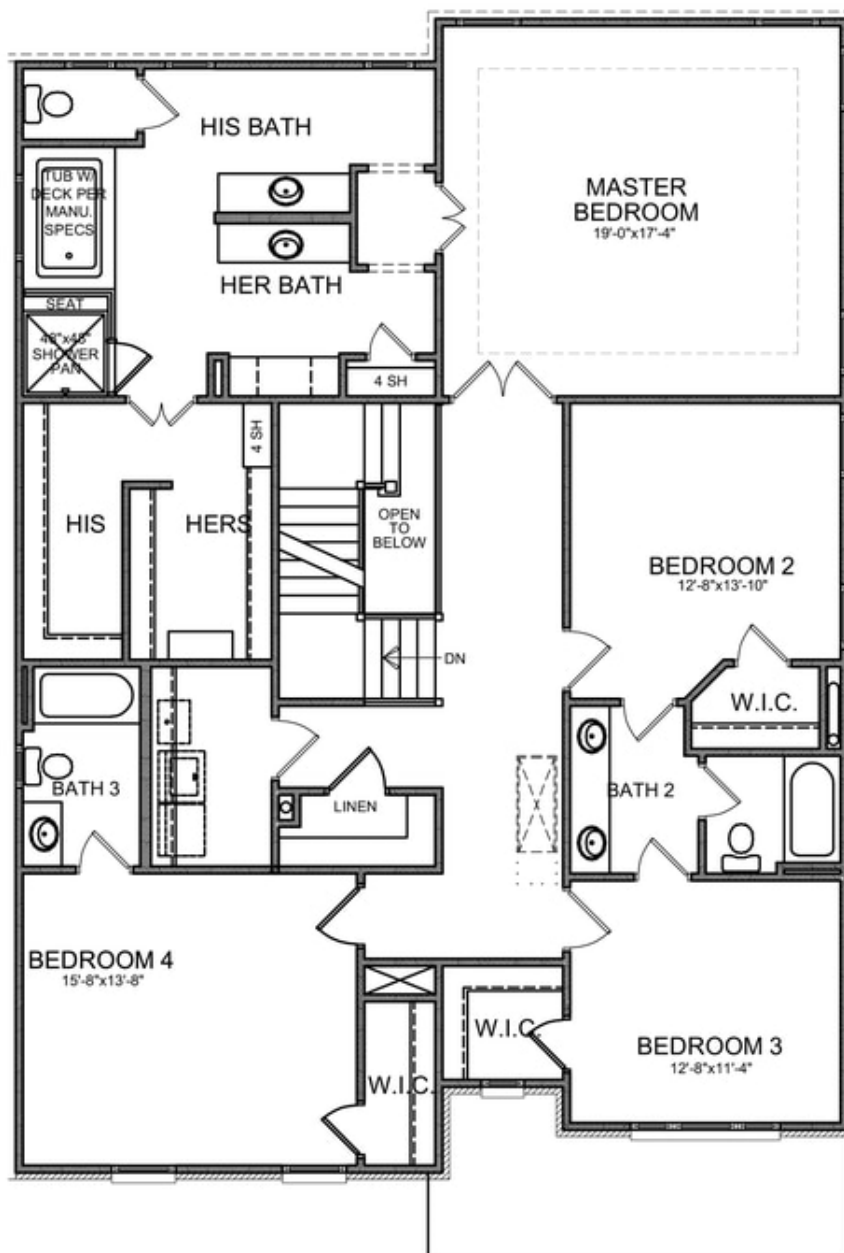


Want to Know More
About This Home?

CONTACT OUR NEW HOME NAVIGATOR

NONE

Call Us @ 470.456.9551

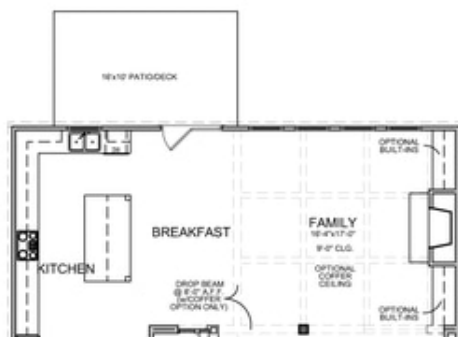


Want to Know More
About This Home?

CONTACT OUR NEW HOME NAVIGATOR

NONE

Call Us @ 470.456.9551



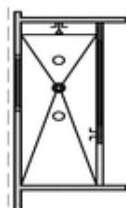
OPT Extended Kitchen



OPT Extended Porch & Awning



OPT Covered Porch



OPT Owner's Walk-In Shower



OPT Sunroom -&- OPT Patio/Deck

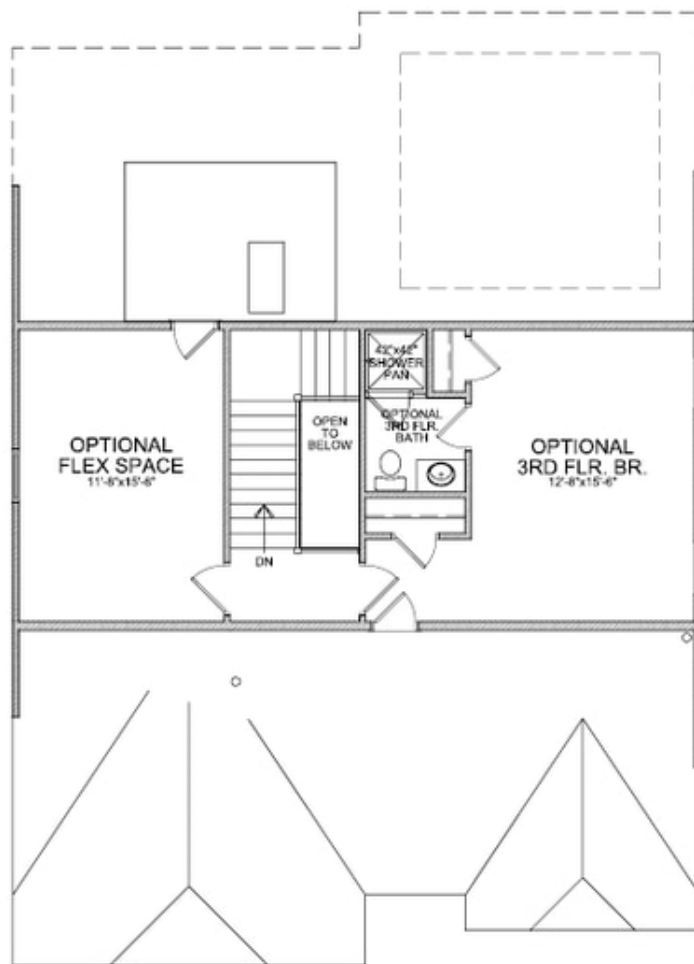
OPT Fireplace on Sunroom

Want to Know More
About This Home?

CONTACT OUR NEW HOME NAVIGATOR

NONE

Call Us @ 470.456.9551



OPT Third Floor

*Third Floor NOT available on Elevations B & E

Want to Know More
About This Home?

CONTACT OUR NEW HOME NAVIGATOR

NONE

Call Us @ 470.456.9551