



PRICED AT
\$659,730

 2264 Sq Ft

 3 Beds

 3.0 Baths

 2 Car Garage

 2.0 Story

QUICK MOVE-IN!!! OWNER SUITE ON MAIN!!! Elevate your Life in 2023! Two Bedrooms including Owner's Bedroom on Main Level! This open floor plan is perfect for entertaining & features a family room, breakfast room, a sunroom that can be used as separate dining & beautiful gourmet kitchen. The kitchen offers a large island with stainless appliances & quartz countertops. The owners suite is located on the 1st floor with dual vanities in the owners bath & a large, frameless shower. Second Floor has Full Bedroom/Bathroom and Loft. Community Amenities include a gated entrance, cabana, pool, five pocket parks and access to a county park trails and a walking path to Peachtree Ridge Park. Ellington is located within the desirable Peachtree Ridge School District and just a short 3 mile drive from the award winning Suwanee Towne Center! Quick-Move-In! Inquire about \$20,000 ANY WAY YOU WANT INCENTIVE for contracts written by Jan 31, 2023!

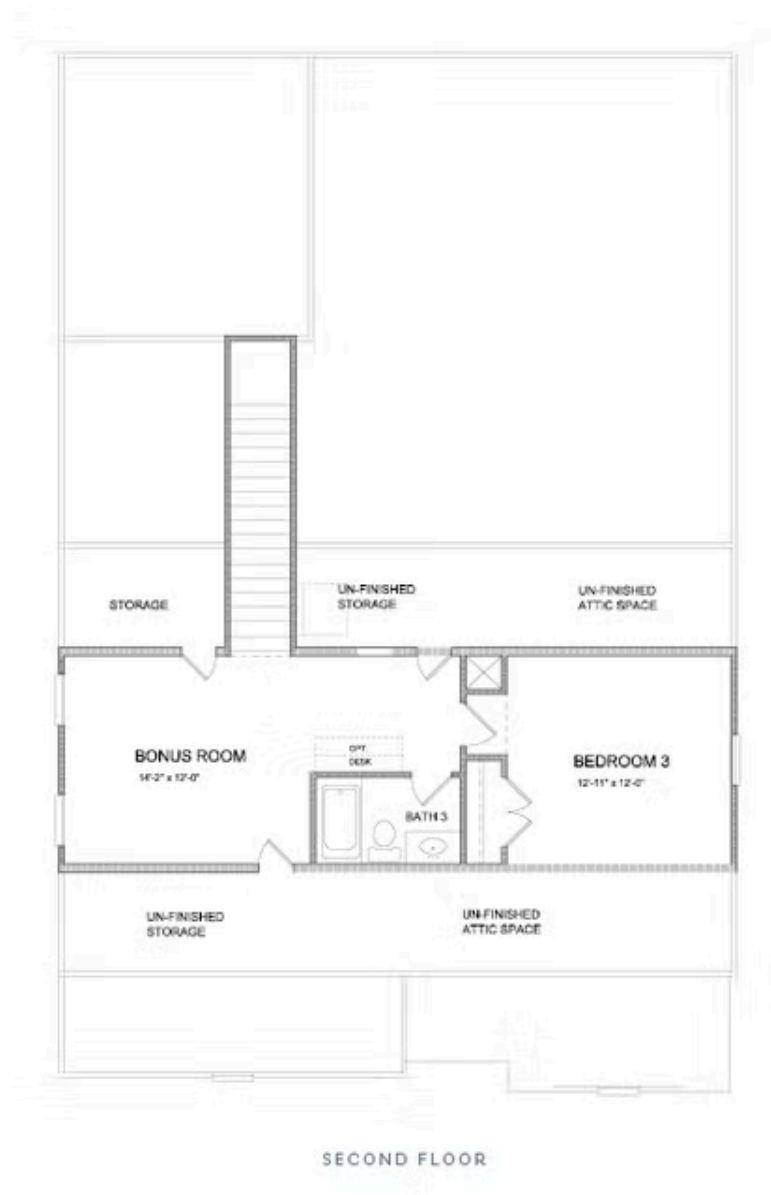
**Want to Know More
About This Home?**

CONTACT OUR COMMUNITY SALES MANAGER
Call Us @ 470.456.9551



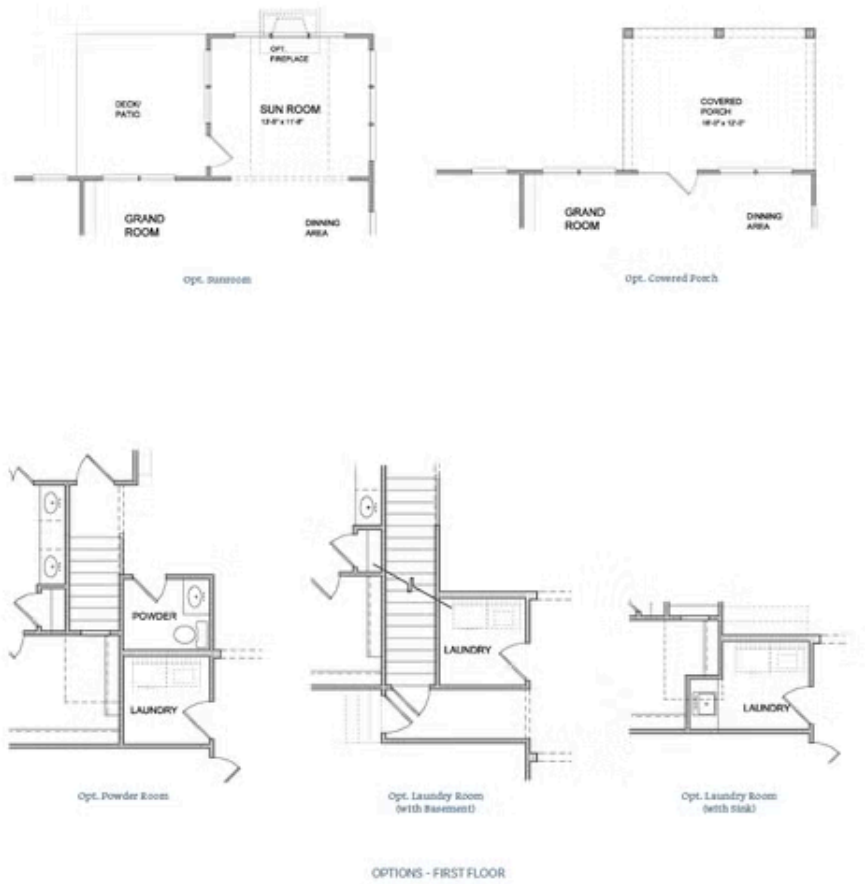
**Want to Know More
About This Home?**

CONTACT OUR COMMUNITY SALES MANAGER
Call Us @ 470.456.9551



Want to Know More
About This Home?

CONTACT OUR COMMUNITY SALES MANAGER
Call Us @ 470.456.9551



Want to Know More
About This Home?

CONTACT OUR COMMUNITY SALES MANAGER
Call Us @ 470.456.9551