








PRICED AT
\$536,650

-  1893 Sq Ft
-  3 Beds
-  3.5 Baths
-  2 Car Garage
-  3.0 Story

Be Home for your Holiday Memories. Garwood floorplan featuring beautiful brick front exterior. Upon entering the mid-level foyer, you will find the beautifully designed kitchen that has an oversized island featuring quartz countertops, stainless appliances and tile backsplash! With an open concept, you have a view to the family room and dining area. The family room with cozy gas fireplace provides access to large rear deck for outdoor entertainment. On the upper level you will find your owner's suite featuring a wonderful bathroom that has a dual vanity and extended walk-in shower with drying area. A secondary bedroom with private bath is located down the hallway. The laundry area is on the upper floor to provide you with easy convenience. Terrace level complete with bedroom and full bath as well as 2 car garage. Check out our fully furnished Garwood Information/Model Home! Community amenities include a gated entrance, clubhouse, pool, playground, five pocket parks and paved access to County Park Trails and a path to Peachtree Ridge Park! This home is to be built - with estimated completion month range: December 2023 - January 2024. Photos are not actual home but of previously built Garwood plan.

**Want to Know More
About This Home?**

CONTACT OUR COMMUNITY SALES MANAGER
Call Us @ 470.456.9551



FIRST FLOOR

Elevation J

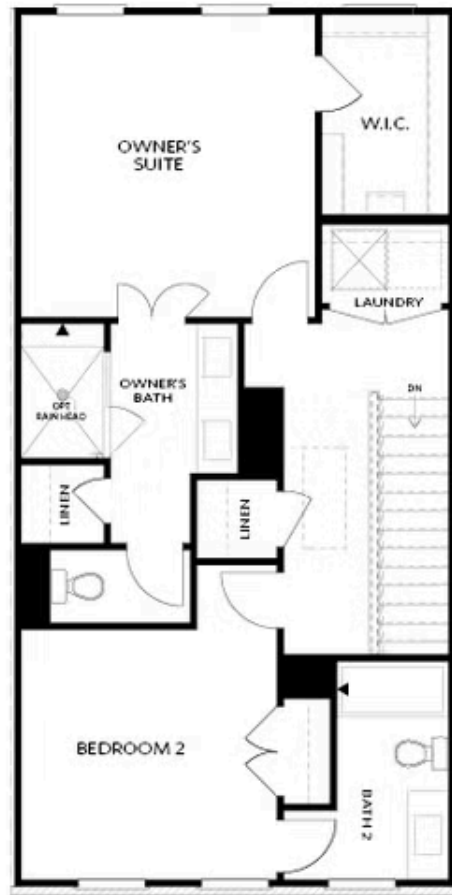
Want to Know More
About This Home?

CONTACT OUR COMMUNITY SALES MANAGER
Call Us @ 470.456.9551



Want to Know More
About This Home?

CONTACT OUR COMMUNITY SALES MANAGER
Call Us @ 470.456.9551



THIRD FLOOR

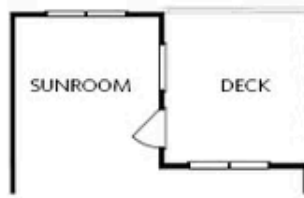
Elevation J

Want to Know More
About This Home?

CONTACT OUR COMMUNITY SALES MANAGER
Call Us @ 470.456.9551



OPT Double Doors
on Bedroom 3



OPT Sunroom ilo Full Deck



OPT Owner's
Walk-Through Shower



OPT Shower ilo
Tub/Shower Combo

FIRST FLOOR

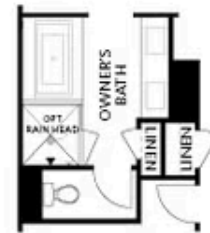


OPT Fireplace



OPT Linear Fireplace

SECOND FLOOR



OPT Owner's Shower &
Tub Combo

THIRD FLOOR

OPTIONS

Want to Know More
About This Home?

CONTACT OUR COMMUNITY SALES MANAGER
Call Us @ 470.456.9551