



PRICED AT
\$770,700

 3472 Sq Ft

 5 Beds

 4.0 Baths

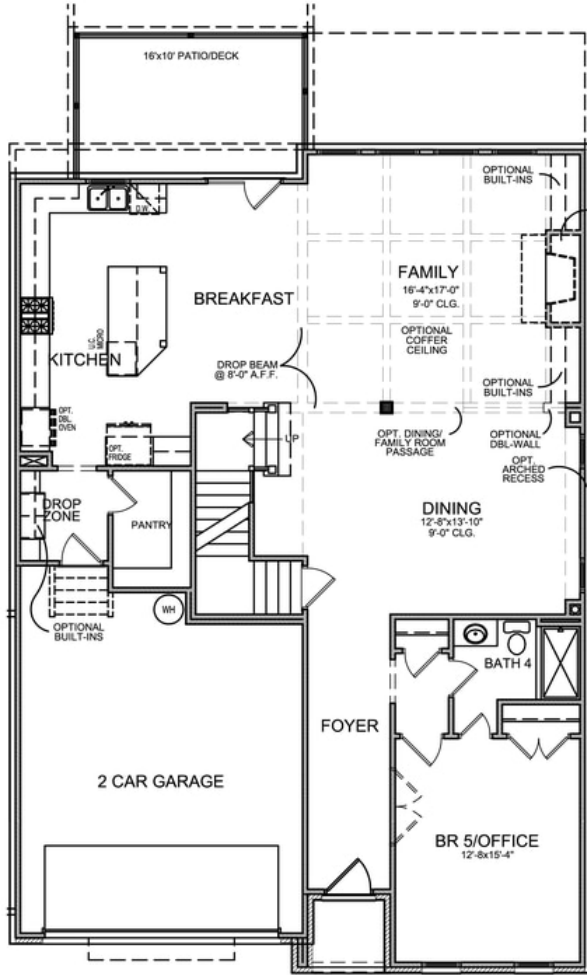
 2 Car Garage

 3.0 Story

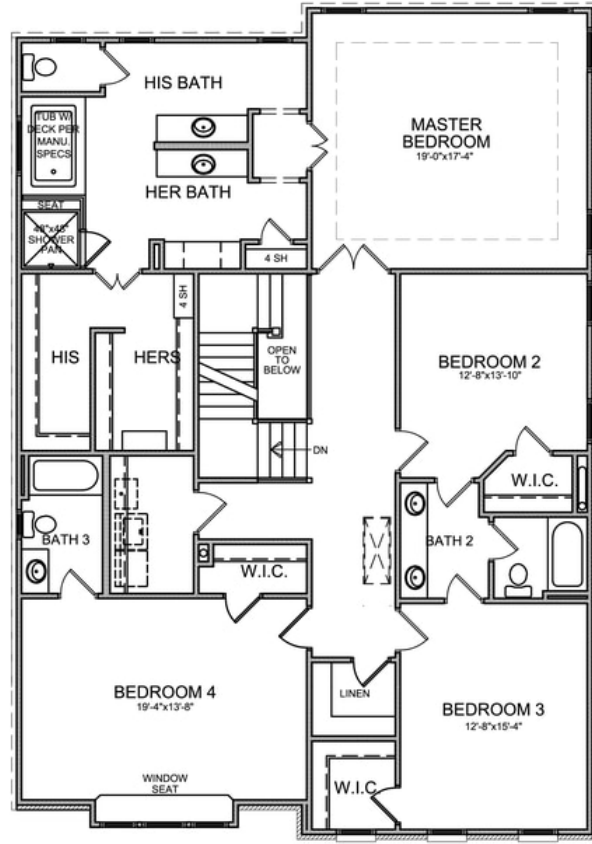
Elevate your life in 2023! New Year - New Price Plus \$20k Any Way You Want on all contracts written before 2/28/2023 and closing by 3/31/2023. This beautiful open concept floor plan features 10' ceilings on the main floor! Light filled Extended Kitchen with oversized Island, Stainless Steel Appliances, plenty of cabinets, breakfast area and walk-in Pantry. The main floor also includes a Formal Dining Room, a guest bedroom on Main, bath and a sunroom that leads to a Private Backyard. On the upper floor, you have a Spacious Primary Suite with His & Hers walk-in closet and Spa-like Bath with separate vanities, soaking tub and walk-in shower. A Jack-n-Jill Bathroom with walk-in shower is shared between two secondary bedrooms, plus another Bedroom with attached Full Private Bath and Walk-in Closet. Community Amenities will include a gated entrance, clubhouse, pool, playground, five pocket parks and access to County park trails and a path to Peachtree Ridge Park. Ellington is located within the desirable Peachtree Ridge School District and just a short 3 mile drive from the award winning Suwanee Towne Center! Home under construction. Pictures are same floorplan but NOT actual home. Elevate your Life in 2023! Up to \$20,000 ...

**Want to Know More
About This Home?**

CONTACT OUR NEW HOME NAVIGATOR
Call Us @ 470.456.9551



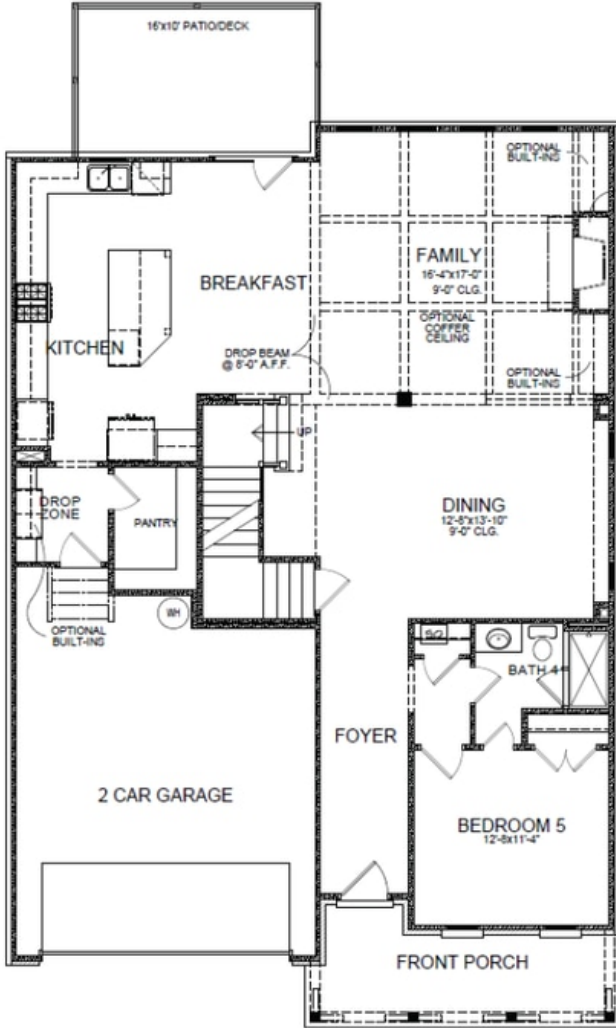
First Floor



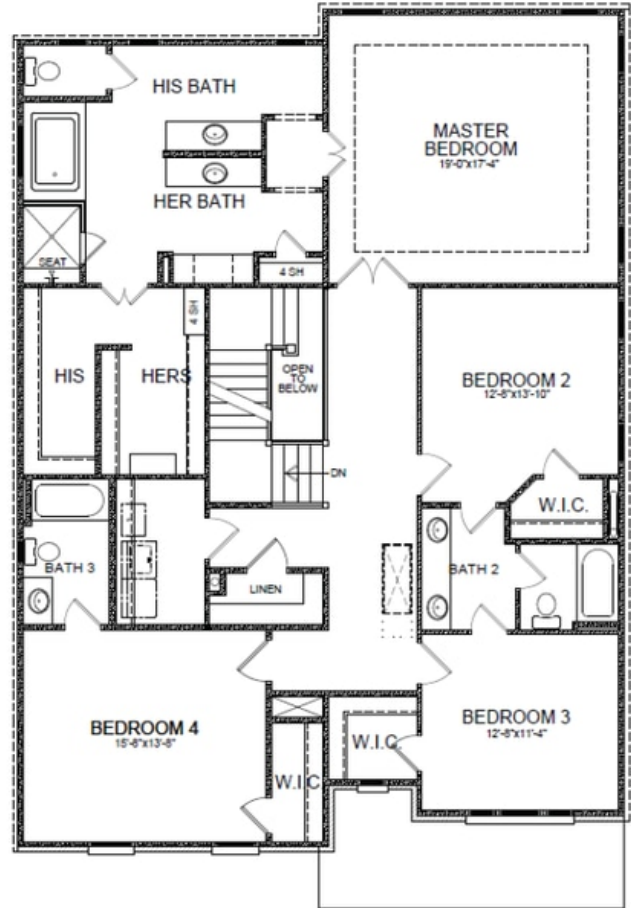
Second Floor

Want to Know More
About This Home?

CONTACT OUR NEW HOME NAVIGATOR
Call Us @ 470.456.9551



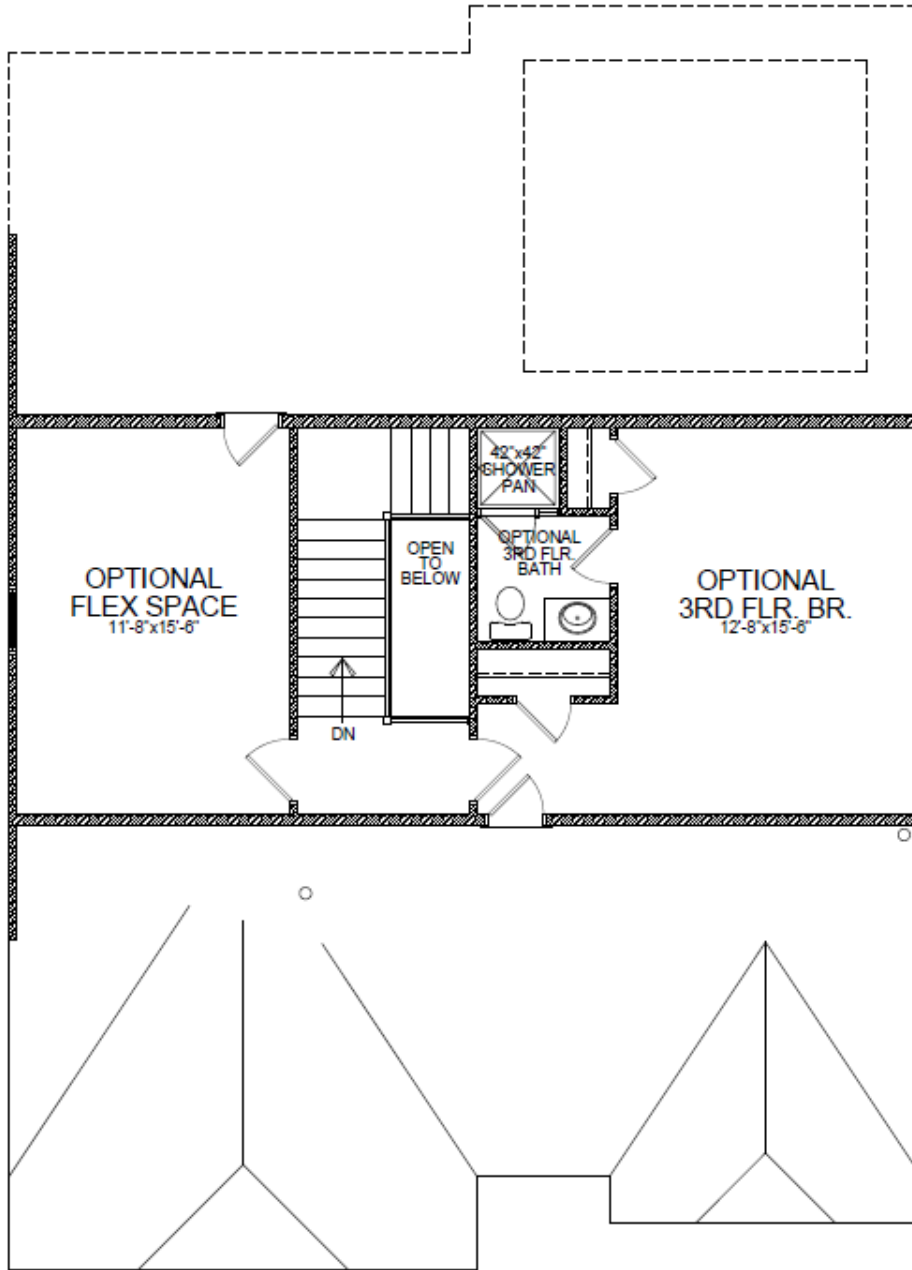
First Floor



Second Floor

**Want to Know More
 About This Home?**

CONTACT OUR NEW HOME NAVIGATOR
 Call Us @ 470.456.9551

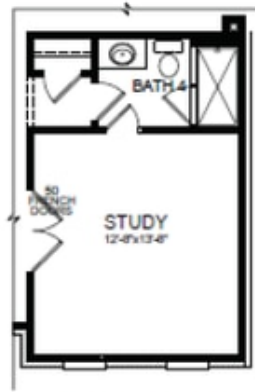


OPT. THIRD FLOOR

**Want to Know More
About This Home?**

CONTACT OUR NEW HOME NAVIGATOR
Call Us @ 470.456.9551

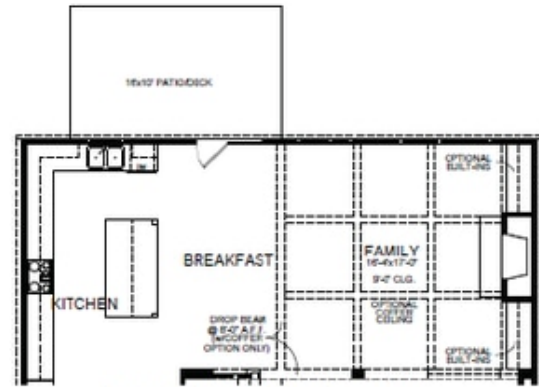
Optional Layouts



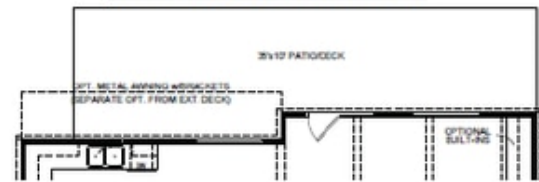
OPT. STUDY



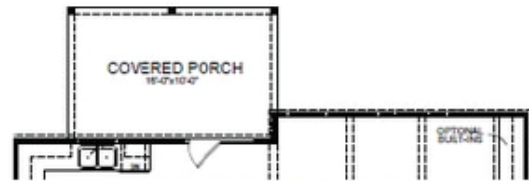
OPT. WALK-IN SHOWER
2ND FLOOR PLAN



OPT. EXTENDED KITCHEN



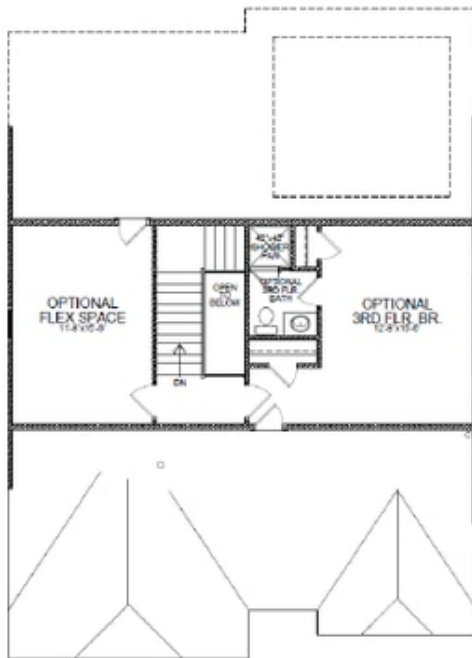
OPT. EXTENDED PORCH & AWNING



OPT. COVERED PORCH



OPT. SUNROOM & OPT. PATIO/DECK
1ST FLOOR PLAN



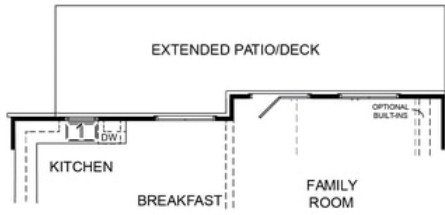
OPT. THIRD FLOOR

*Third Floor NOT available on Elevations B and E

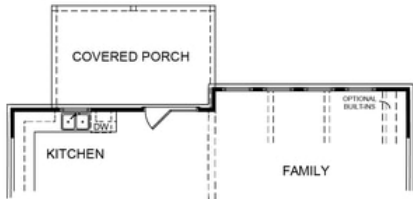
**Want to Know More
About This Home?**

CONTACT OUR NEW HOME NAVIGATOR
Call Us @ 470.456.9551

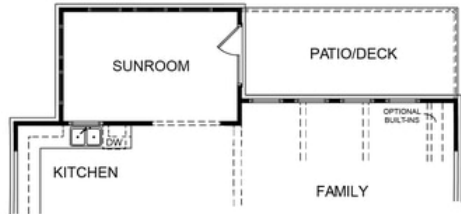
Optional Layouts



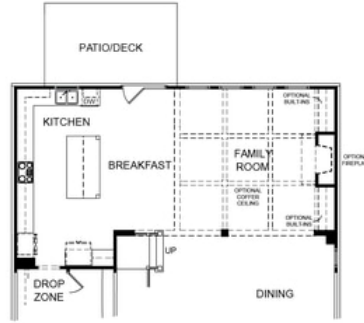
Optional Extended Patio/Deck



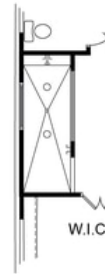
Optional Covered Porch



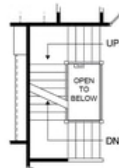
Optional Sunroom



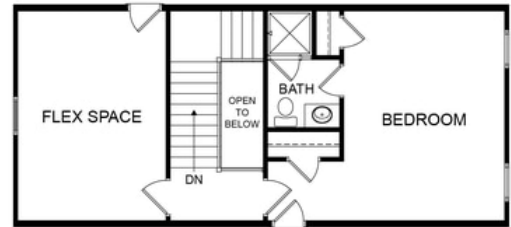
Optional Extended Kitchen



Optional Walk-In
Owner's Shower



Optional Stairs Layout when
Optional 3rd Floor is Selected



Optional 3rd Floor

**Want to Know More
About This Home?**

CONTACT OUR NEW HOME NAVIGATOR
Call Us @ 470.456.9551