



PRICED AT
\$681,560

 2764 Sq Ft

 3 Beds

 2.5 Baths

 2 Car Garage

 2.0 Story

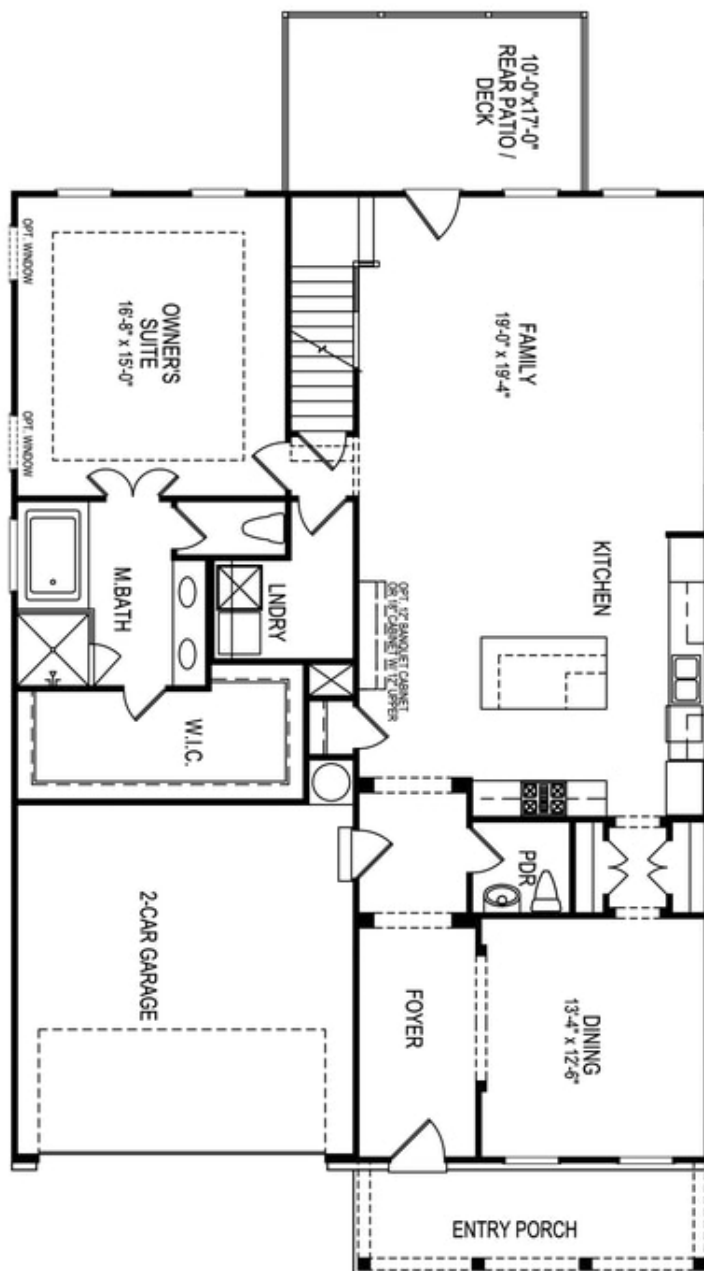
Elevate your Life in 2023! \$20,000 towards closing costs with preferred lender for contracts written by January 31, 2023. Sought after with Owner's Suite on Main, this light filled open floorplan is perfect for entertaining! Featuring Family room with gas Fireplace, Breakfast/Sunroom, separate Dining room & beautiful Gourmet Kitchen with large island, white cabinets, quartz countertops, stainless steel appliances, pantry and plenty of cabinet space. The Owners suite is conveniently located on the main floor with Spa-like Owner's Bath: Frameless walk-in Shower, Dual vanities, Soaking Tub and oversized Walk-in Closet. Two additional bedrooms at second floor share a full Bath, Spacious Loft with Open Rail and plenty of attic storage! Hardwood floors throughout! Community Amenities include a gated entrance, cabana, pool, playground, five pocket parks and access to County park trails and a path to Peachtree Ridge Park. Ellington is located within the desirable Peachtree Ridge School District and just a short 3 mile drive from the award winning Suwanee Towne Center! Home is completed and ready for Quick Move-in! Furnished pictures are of a previously built model, same floor plan but NOT of this homesite

**Want to Know More
About This Home?**

CONTACT OUR NEW HOME NAVIGATOR

NONE

Call Us @ 470.456.9551

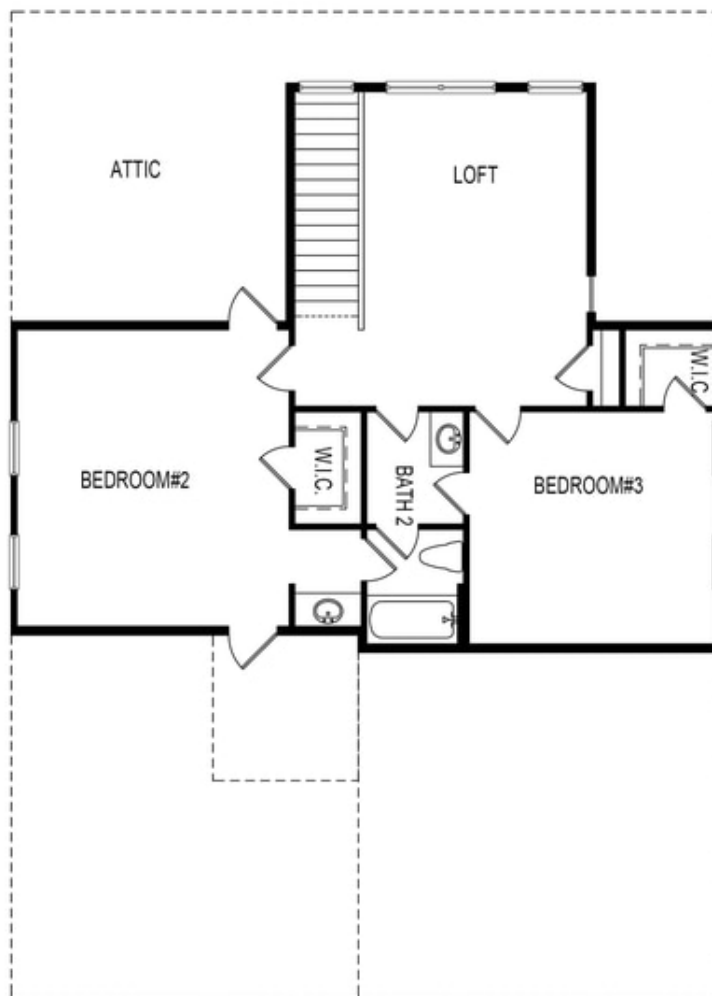


Want to Know More
About This Home?

CONTACT OUR NEW HOME NAVIGATOR

NONE

Call Us @ 470.456.9551



Second Floor

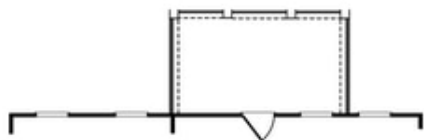
**Want to Know More
About This Home?**

CONTACT OUR NEW HOME NAVIGATOR

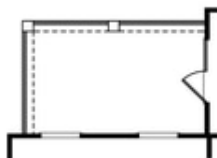
NONE

Call Us @ 470.456.9551

Options



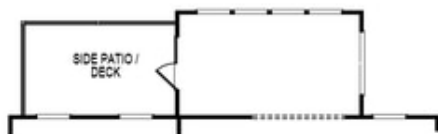
OPT Covered Patio/Deck



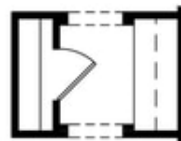
OPT Covered Side Patio/Deck



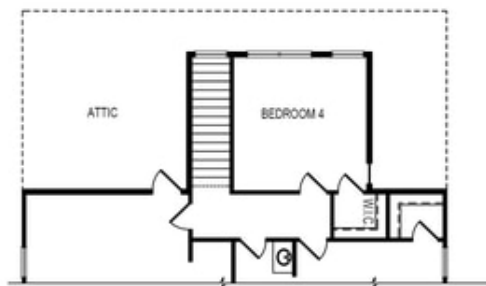
OPT Fireplace
w. Opt Built-Ins



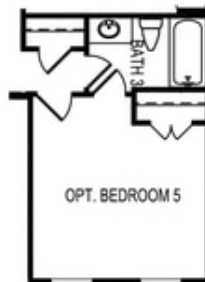
OPT Sunroom



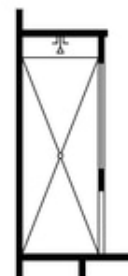
OPT Butler's Pantry



OPT Bedroom 4 ilo Loft



OPT Bedroom 5
ilo Dining Room



OPT Owner's
Walk-In Shower

Want to Know More
About This Home?

CONTACT OUR NEW HOME NAVIGATOR

NONE

Call Us @ 470.456.9551