



PRICED AT  
**\$583,155**

 2030 Sq Ft

 3 Beds

 2.5 Baths

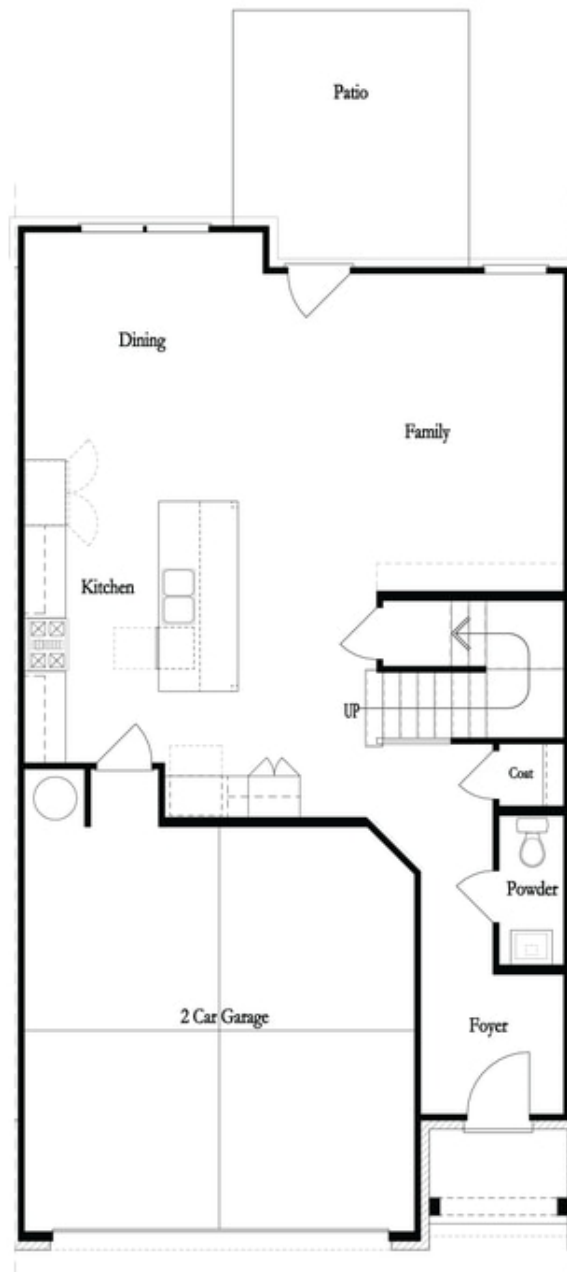
 2 Car Garage

 2.0 Story

New Year, New Home, New You! Welcome to this exquisite two-story new construction townhome, where modern design seamlessly blends with comfort and functionality. Upon entering, you'll find yourself in a spacious and light-filled, open living area, adorned with neutral tones that create an inviting atmosphere. The main floor features an open-concept layout, seamlessly connecting the living room, dining area, and kitchen. The flooring is adorned with high-quality, easy-to-maintain materials, such as light-colored hard surface floors, adding a touch of warmth to the contemporary aesthetic. The kitchen is a chef's dream, equipped with state-of-the-art stainless steel appliances, sleek creamy white quartz countertops, and ample storage space. White cabinetry complements the overall design, providing both style and functionality. One of the highlights of this townhome is double sliding doors that lead to the covered patio, seamlessly extending the living space outdoors. Whether you're hosting gatherings or simply enjoying a quiet evening, the patio provides a versatile and comfortable space to unwind. It's perfect for sipping morning coffee or entertaining guests, rain or shine. Upstairs, you'll discover a well-designed layout that maximizes privacy and convenience. The bedrooms continue the theme of neutral tones, creating a tranquil and restful retreat. Each bedroom is generously ...

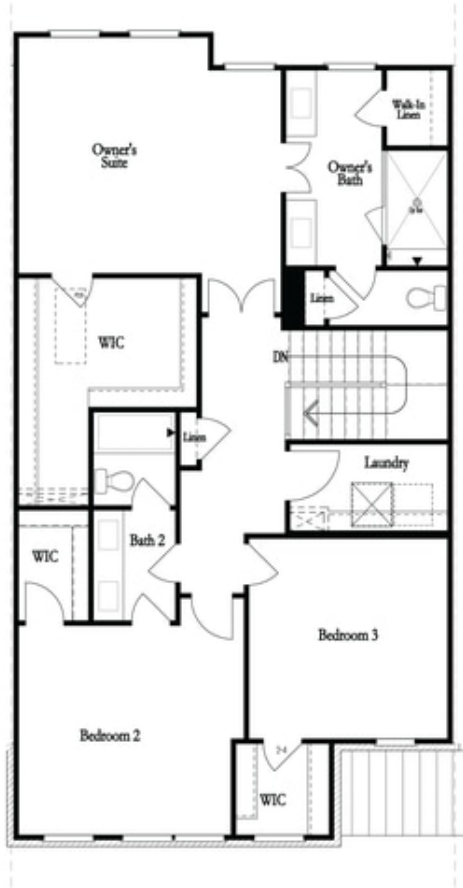
**Want to Know More  
About This Home?**

CONTACT OUR COMMUNITY SALES MANAGER  
Call Us @ 470.456.9551

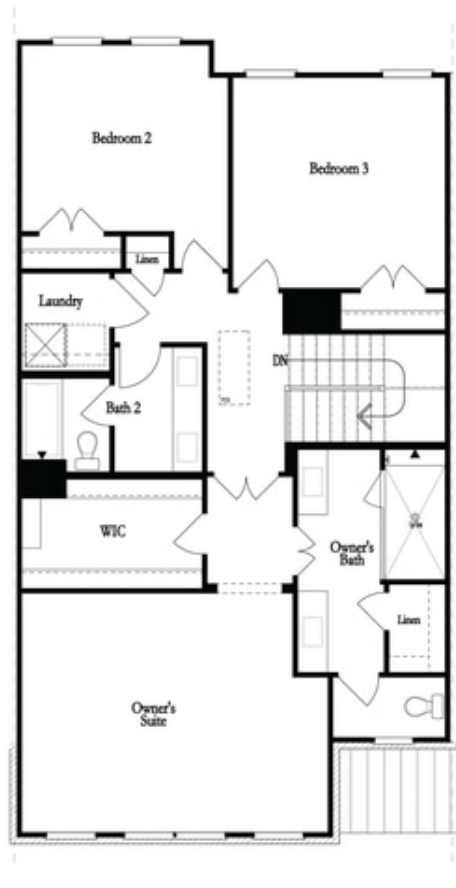


**Want to Know More  
About This Home?**

CONTACT OUR COMMUNITY SALES MANAGER  
Call Us @ 470.456.9551



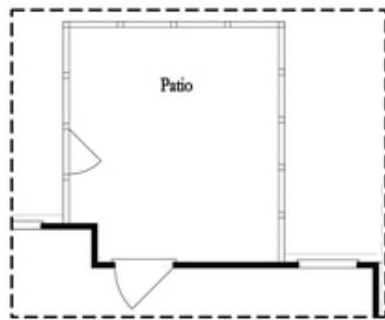
Second Floor - Owner's Rear



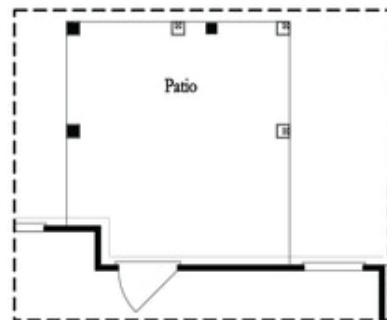
Second Floor - Owner's Front

**Want to Know More  
About This Home?**

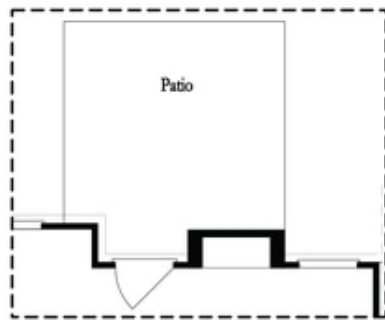
CONTACT OUR COMMUNITY SALES MANAGER  
Call Us @ 470.456.9551



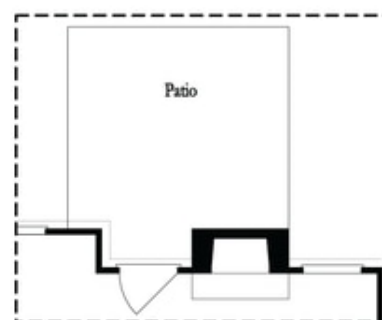
Opt. Screened Patio



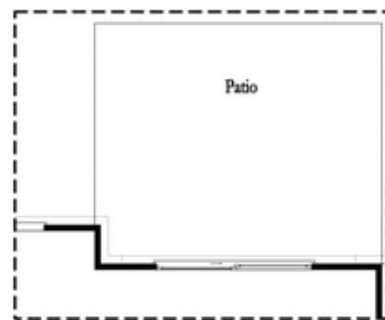
Opt. Coverd Patio



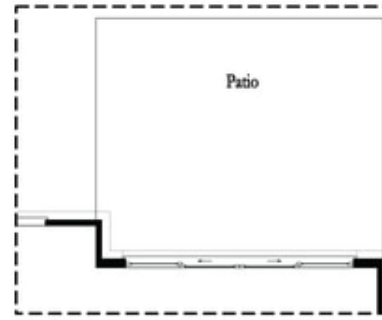
Opt. Linear Fireplace



Opt. Fireplace



Opt. 8 Foot Slider Door

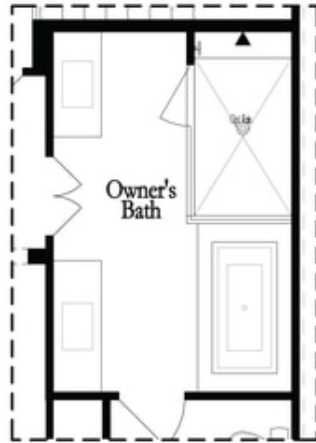


Opt. 12 Foot Slider Door

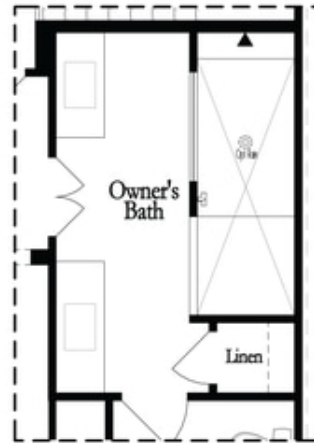
Main Level Options

**Want to Know More  
 About This Home?**

CONTACT OUR COMMUNITY SALES MANAGER  
 Call Us @ 470.456.9551

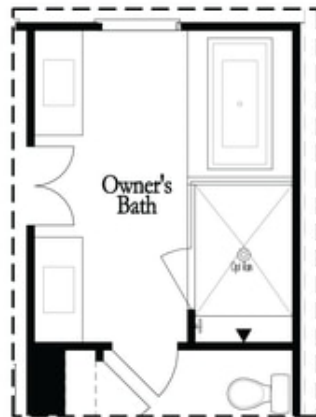


Opt. Shower/Tub

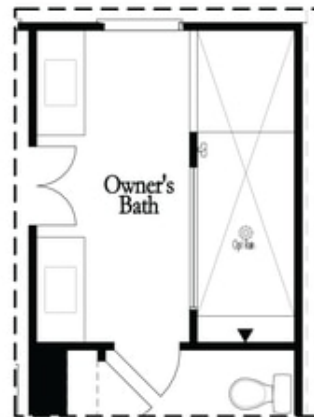


Opt. Walk-Through Shower

Owner's Front - Options



Opt. Shower/Tub



Opt. Walk-Through Shower

Owner's Rear - Options

**Want to Know More  
About This Home?**

CONTACT OUR COMMUNITY SALES MANAGER  
Call Us @ 470.456.9551