



PRICED AT  
**\$717,855**

 2853 Sq Ft

 4 Beds

 3.0 Baths

 2 Car Garage

 3.0 Story

This open floor plan is perfect for entertaining & features a family room, breakfast room, separate dining room & beautiful gourmet kitchen. The kitchen offers a large island with a stainless farm sink, stainless appliances & quartz countertops. The main floor also has a spacious guest suite. The owners suite is located on the 2nd floor & has his/hers closets, dual vanities in the owners bath & a large, frameless shower. Community Amenities will include a gated entrance, cabana, pool, five pocket parks and access to County park trails and a path to Peachtree Ridge Park. Ellington is located within the desirable Peachtree Ridge School District and just a short 3 mile drive from the award winning Suwanee Towne Center! Home under construction. Pictures are same floorplan but NOT actual home. Estimated completion of home is March/April 2023

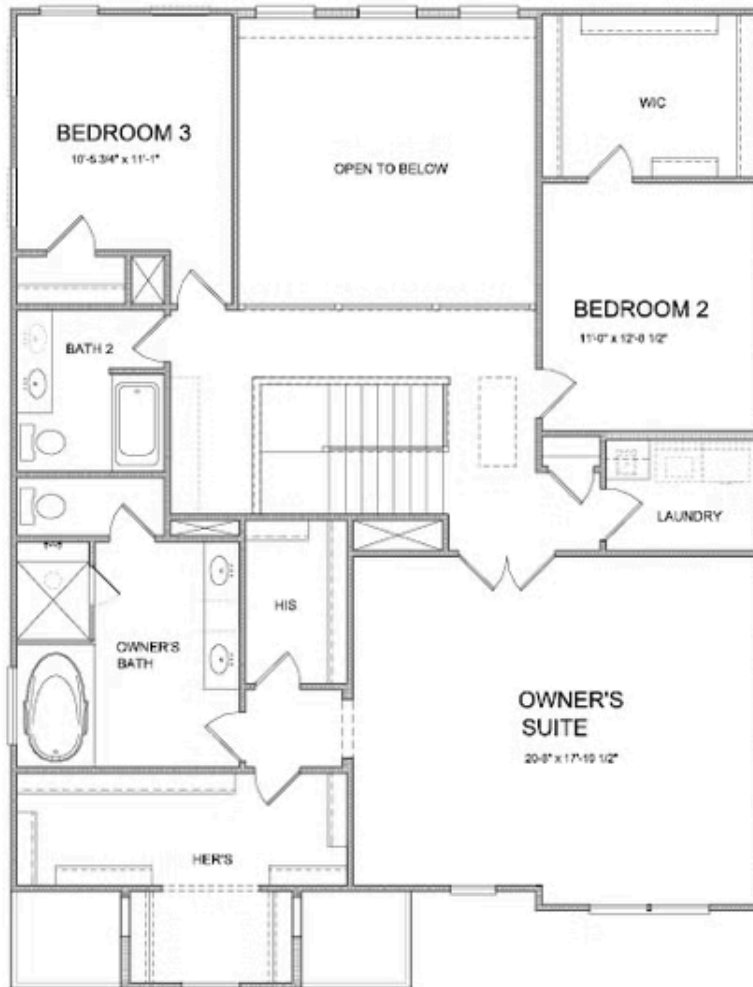
**Want to Know More  
About This Home?**

CONTACT OUR COMMUNITY SALES MANAGER  
Call Us @ 470.456.9551



Want to Know More  
About This Home?

CONTACT OUR COMMUNITY SALES MANAGER  
Call Us @ 470.456.9551



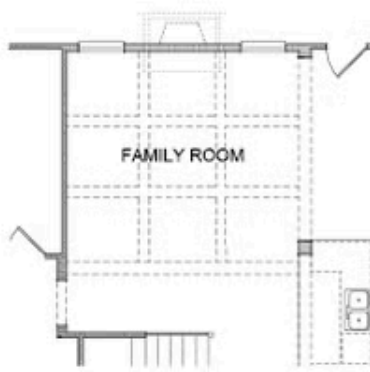
Want to Know More  
About This Home?

CONTACT OUR COMMUNITY SALES MANAGER  
Call Us @ 470.456.9551



Want to Know More  
About This Home?

CONTACT OUR COMMUNITY SALES MANAGER  
Call Us @ 470.456.9551



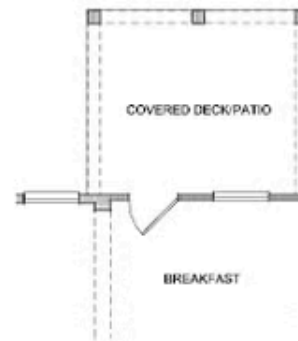
Opt. Coffered Ceilings  
w/ Opt. Media Room or Bedroom 5 above



Opt. Bedroom 4 w/ Full Bath  
No Study & Power Room



Opt. Sunrooms



Opt. Covered Deck/Patio

Want to Know More  
About This Home?

CONTACT OUR COMMUNITY SALES MANAGER  
Call Us @ 470.456.9551



Want to Know More  
About This Home?

CONTACT OUR COMMUNITY SALES MANAGER  
Call Us @ 470.456.9551