




PRICED AT  
**\$599,900**

 2036 Sq Ft

 3 Beds

 2.5 Baths

 2 Car Garage

 2.0 Story

MOVE-IN READY!! Elevate your life in 2023! Final Opportunity for this sought after Classic Collection Townhome with Daylight Basement. The main level entry that leads you to open concept Dining/Family with Chef's Kitchen designed for entertainment! The Cool Stone Collection has been the chosen scheme by the Design Team. The kitchen offers more of a modern feel with plenty of cabinets, quartz countertops, stainless appliances and a tile backsplash. Large double sliding door opens to Covered Deck that provides for outdoor enjoyment. On the 2nd floor you will enter a spacious Owner's suite & bath with extended walk-in Shower with drying area, dual vanities, quartz countertops & oversized walk in closet. You will also find two secondary bedrooms with a full shared bath. The laundry room conveniently located on the upper floor making laundry day super convenient. Community conveniently positioned in a highly desirable location in Gwinnett County and close to vibrant Suwanee Town Center, Duluth, Sugar Hill and Buford! Neighborhood Amenities include a Pool, Clubhouse, and Playground. Quick and Easy Access to interstates, shopping and restaurants. \$5,000 in closing cost incentive with the use of one of the Preferred Lenders - Ameris Bank, Capital City Home Loans, New American ...

**Want to Know More  
About This Home?**

CONTACT OUR COMMUNITY SALES MANAGER  
Call Us @ 470.456.9551



Unfinished Basement

Want to Know More  
About This Home?

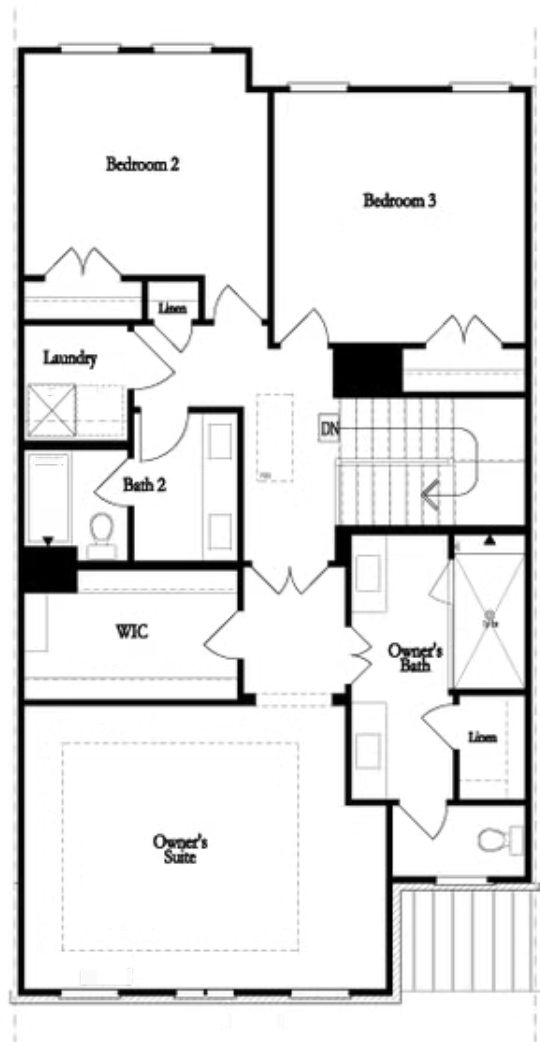
CONTACT OUR COMMUNITY SALES MANAGER  
Call Us @ 470.456.9551



**First Floor**

**Want to Know More  
About This Home?**

CONTACT OUR COMMUNITY SALES MANAGER  
Call Us @ 470.456.9551



**Second Floor  
(Owner's Front)**

**Elevations G, H, J1, J3 & L**

**Want to Know More  
About This Home?**

CONTACT OUR COMMUNITY SALES MANAGER  
Call Us @ 470.456.9551

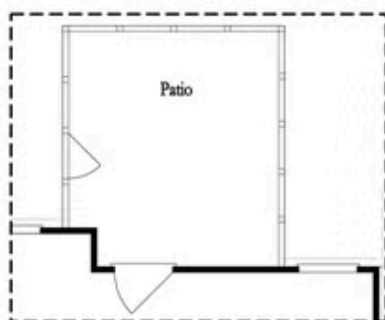


Second Floor  
(Owner's Rear)

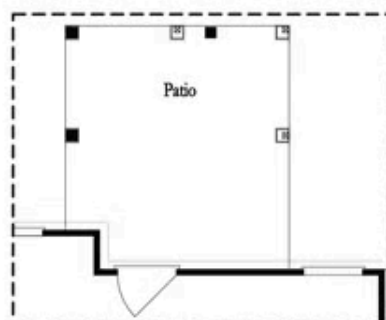
Elevations G, H, J1, J3 & L

Want to Know More  
About This Home?

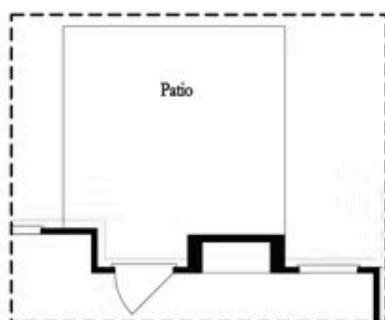
CONTACT OUR COMMUNITY SALES MANAGER  
Call Us @ 470.456.9551



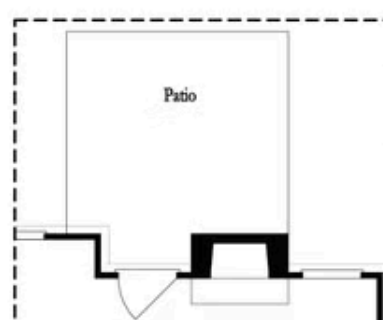
Opt. Screened Patio



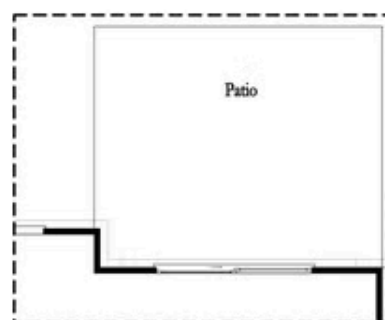
Opt. Coverd Patio



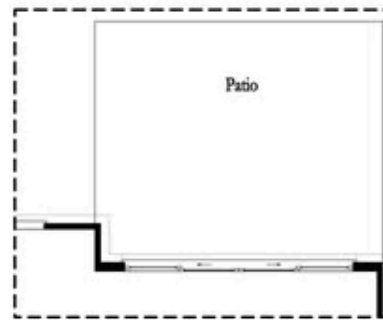
Opt. Linear Fireplace



Opt. Fireplace



Opt. 8 Foot Slider Door



Opt. 12 Foot Slider Door

### Main Level Options

**Want to Know More  
About This Home?**

CONTACT OUR COMMUNITY SALES MANAGER  
Call Us @ 470.456.9551



Opt. Shower/Tub



Opt. Walk-Through Shower

Owner's Front - Options



Opt. Shower/Tub



Opt. Walk-Through Shower

Owner's Rear - Options

Want to Know More  
About This Home?

CONTACT OUR COMMUNITY SALES MANAGER  
Call Us @ 470.456.9551