



PRICED AT
\$599,900

 2036 Sq Ft

 3 Beds

 2.5 Baths

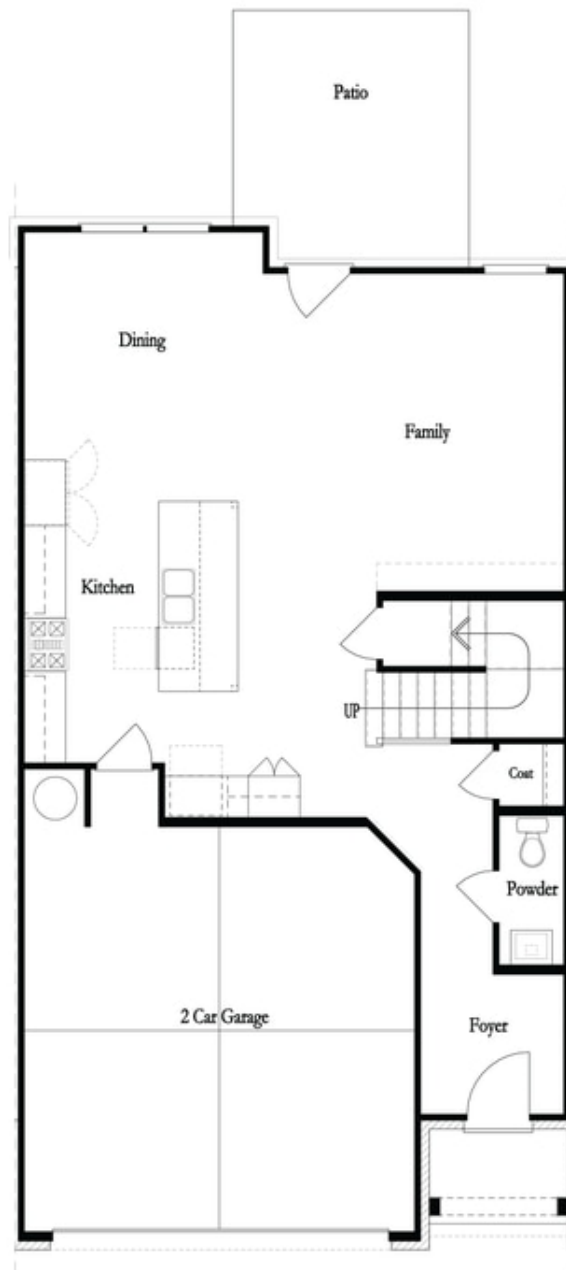
 2 Car Garage

 2.0 Story

MOVE-IN READY!! Elevate your life in 2023! Final Opportunity for this sought after Classic Collection Townhome with Daylight Basement. The main level entry that leads you to open concept Dining/Family with Chef's Kitchen designed for entertainment! The Cool Stone Collection has been the chosen scheme by the Design Team. The kitchen offers more of a modern feel with plenty of cabinets, quartz countertops, stainless appliances and a tile backsplash. Large double sliding door opens to Covered Deck that provides for outdoor enjoyment. On the 2nd floor you will enter a spacious Owner's suite & bath with extended walk-in Shower with drying area, dual vanities, quartz countertops & oversized walk in closet. You will also find two secondary bedrooms with a full shared bath. The laundry room conveniently located on the upper floor making laundry day super convenient. Community conveniently positioned in a highly desirable location in Gwinnett County and close to vibrant Suwanee Town Center, Duluth, Sugar Hill and Buford! Neighborhood Amenities include a Pool, Clubhouse, and Playground. Quick and Easy Access to interstates, shopping and restaurants. \$5,000 in closing cost incentive with the use of one of the Preferred Lenders - Ameris Bank, Capital City Home Loans, New American ...

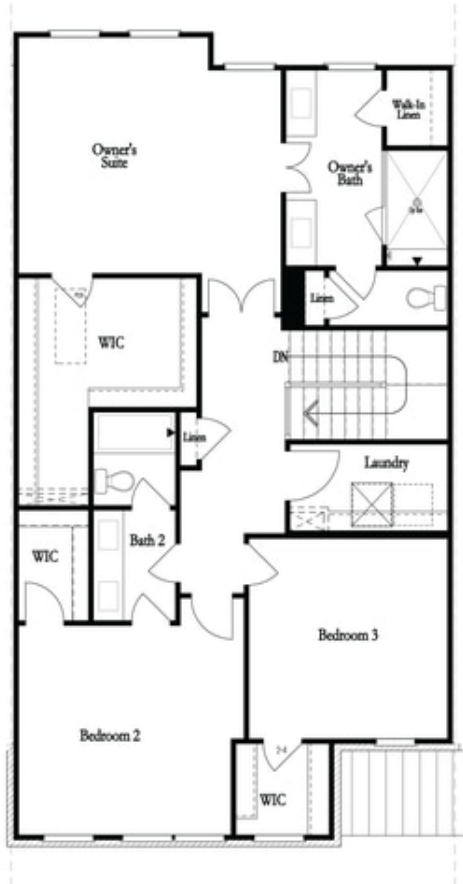
**Want to Know More
About This Home?**

CONTACT OUR COMMUNITY SALES MANAGER
Call Us @ 470.456.9551

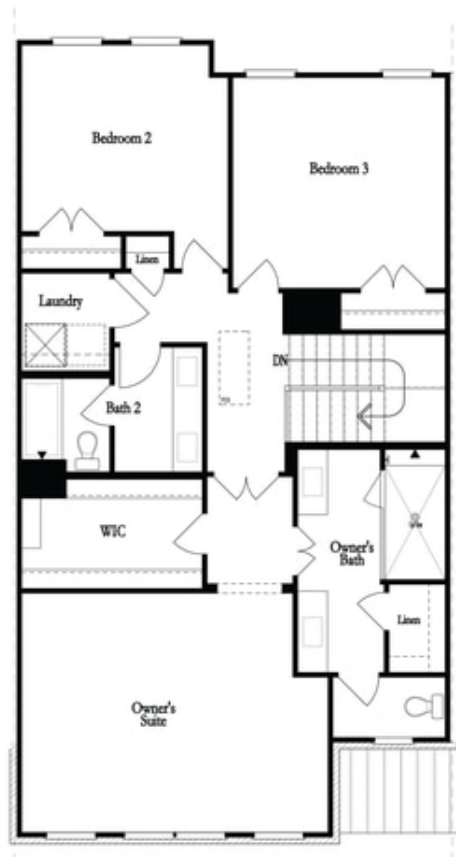


**Want to Know More
About This Home?**

CONTACT OUR COMMUNITY SALES MANAGER
Call Us @ 470.456.9551



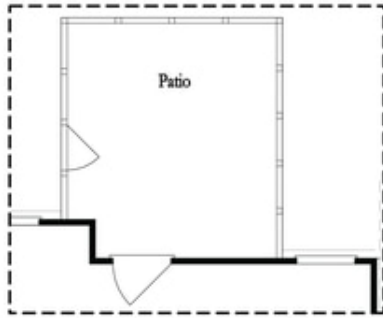
Second Floor - Owner's Rear



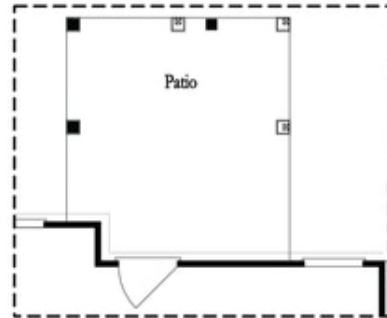
Second Floor - Owner's Front

**Want to Know More
 About This Home?**

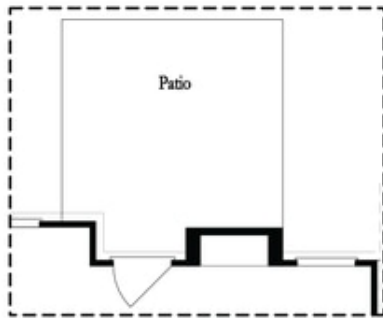
CONTACT OUR COMMUNITY SALES MANAGER
 Call Us @ 470.456.9551



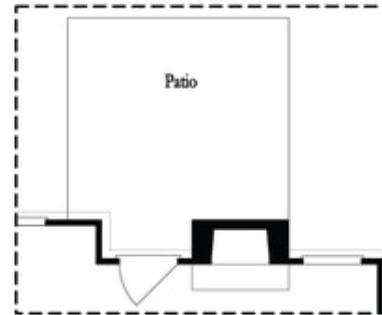
Opt. Screened Patio



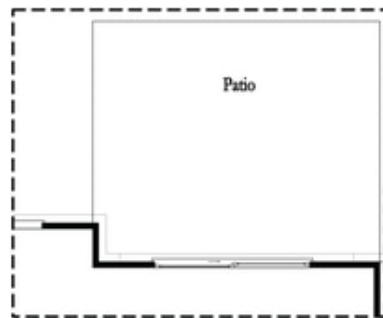
Opt. Coverd Patio



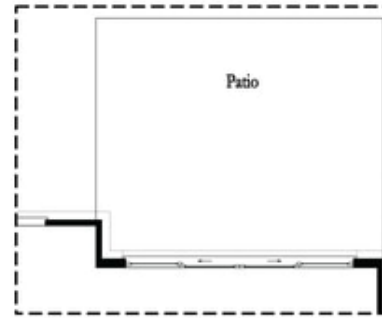
Opt. Linear Fireplace



Opt. Fireplace



Opt. 8 Foot Slider Door

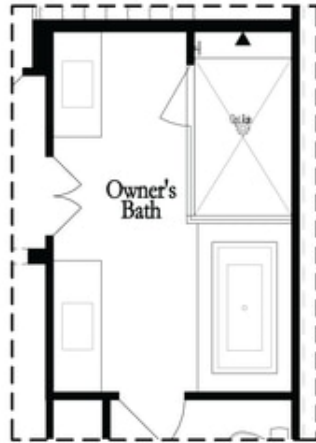


Opt. 12 Foot Slider Door

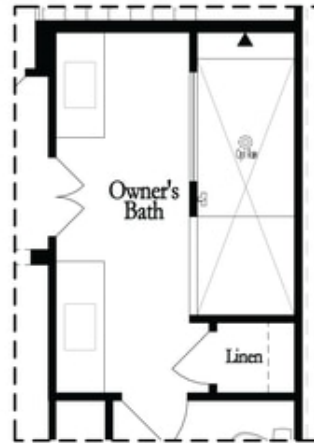
Main Level Options

**Want to Know More
 About This Home?**

CONTACT OUR COMMUNITY SALES MANAGER
 Call Us @ 470.456.9551

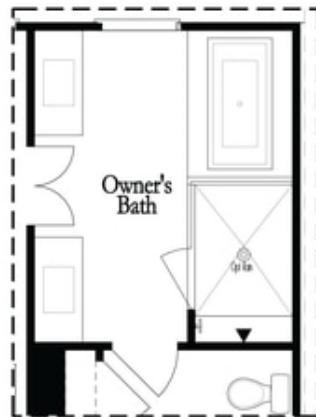


Opt. Shower/Tub

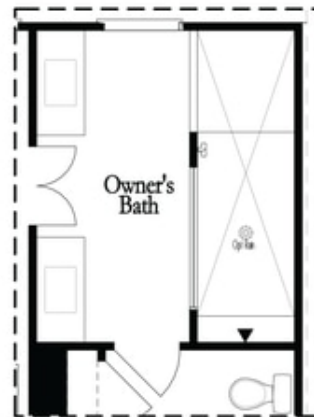


Opt. Walk-Through Shower

Owner's Front - Options



Opt. Shower/Tub



Opt. Walk-Through Shower

Owner's Rear - Options

**Want to Know More
About This Home?**

CONTACT OUR COMMUNITY SALES MANAGER
Call Us @ 470.456.9551