



PRICED AT  
**\$603,600**

 2030 Sq Ft

 3 Beds

 2.5 Baths

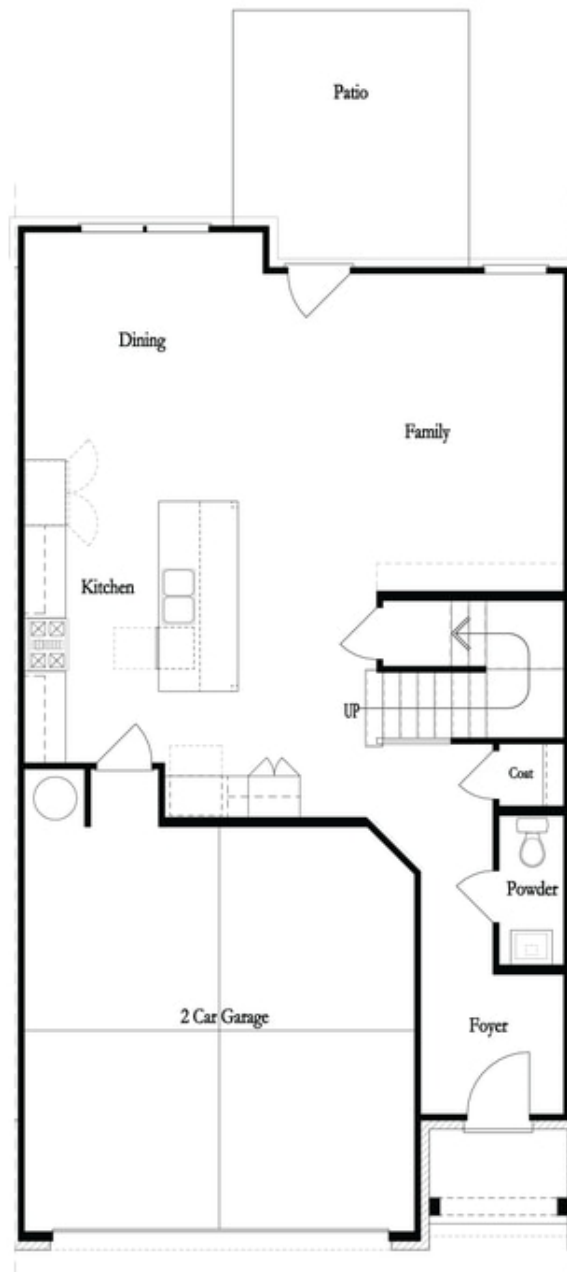
 2 Car Garage

 2.0 Story

New Year, New Home, New You! You must see this beautiful end unit townhome with 2-car front entry garage! Stockton plan featuring main level covered porch entry, that leads you to Family room, Dining room and light filled Kitchen. Designer finishes in the kitchen include a Large island, quartz countertops, stainless appliances and tile backsplash. The double Slider door leads to a covered patio & wooded, fully fenced backyard. You will find a spacious Owner's suite & bath with dual vanities, walk-in shower with seating bench & oversized walk in closet at second level. Plus two secondary Bedrooms each with walk-in closet share a full Bath. Hard surface flooring throughout main level, stairs and upstairs hallway. Laundry room conveniently located on the upper level. This home is Under Construction with an estimated Completion March-April 2024. Ellington community situated in a highly desirable location in Gwinnett County and close to 3 vibrant cities - downtown Sugar Hill, Suwanee Town Center and Buford!! Amenities include a Pool, Clubhouse, Playground, Five pocket Parks as well as paved walkway to Peachtree Ridge Park. Easy Access to interstates, shopping and restaurants. \$5,000 in closing cost incentive with the use of one of the Preferred Lenders ...

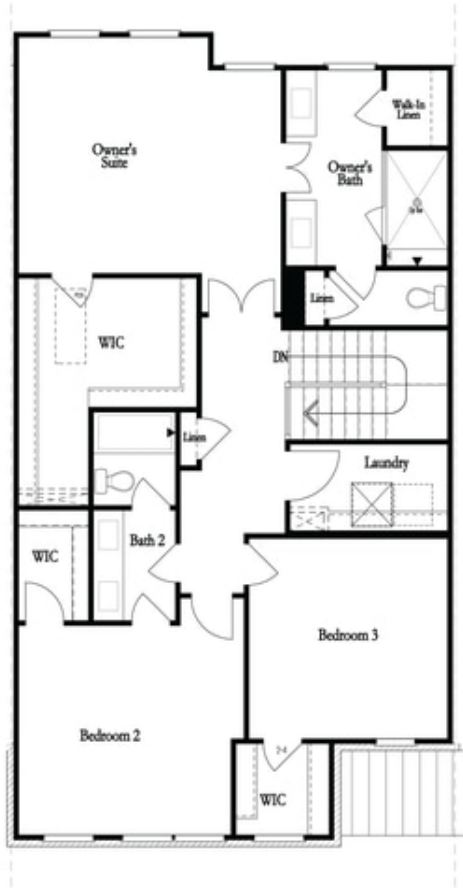
**Want to Know More  
About This Home?**

CONTACT OUR COMMUNITY SALES MANAGER  
Call Us @ 470.456.9551

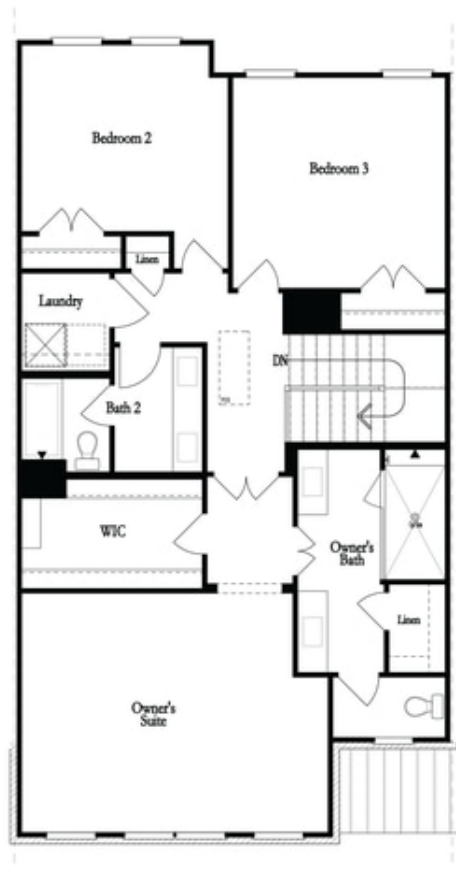


**Want to Know More  
About This Home?**

CONTACT OUR COMMUNITY SALES MANAGER  
Call Us @ 470.456.9551



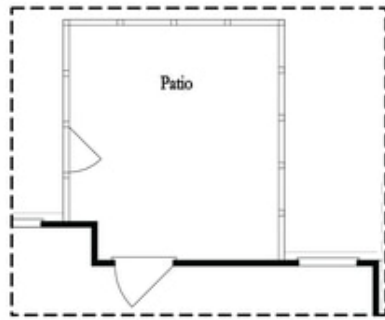
Second Floor - Owner's Rear



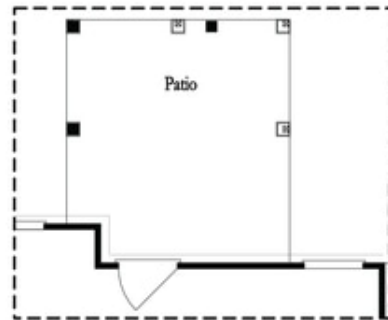
Second Floor - Owner's Front

**Want to Know More  
About This Home?**

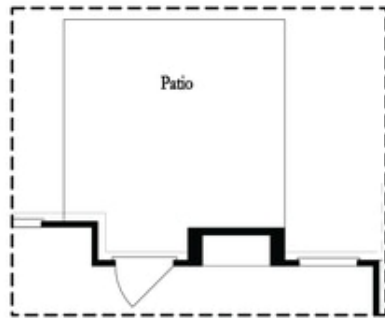
CONTACT OUR COMMUNITY SALES MANAGER  
Call Us @ 470.456.9551



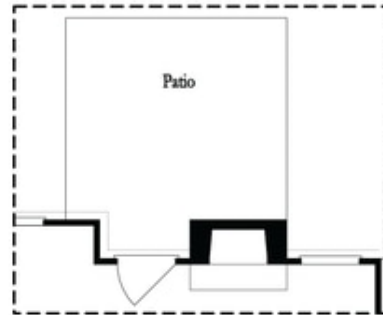
Opt. Screened Patio



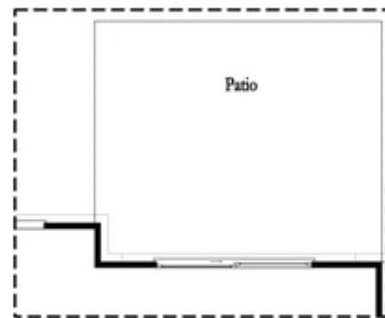
Opt. Coverd Patio



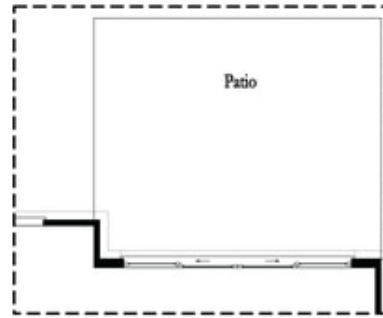
Opt. Linear Fireplace



Opt. Fireplace



Opt. 8 Foot Slider Door

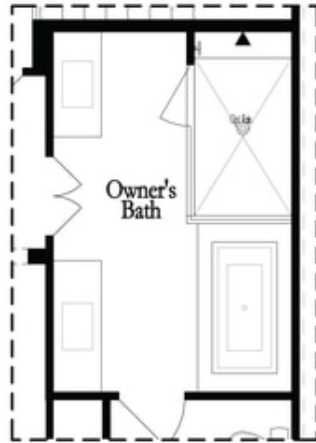


Opt. 12 Foot Slider Door

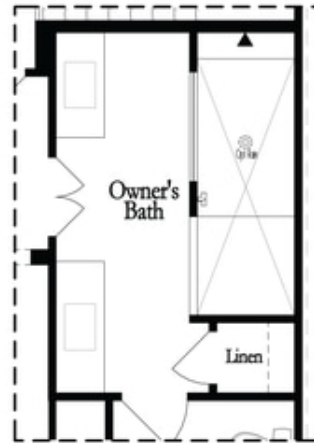
Main Level Options

**Want to Know More  
About This Home?**

CONTACT OUR COMMUNITY SALES MANAGER  
Call Us @ 470.456.9551

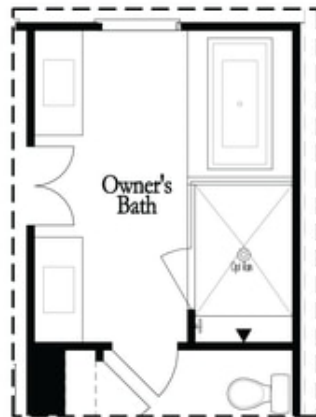


Opt. Shower/Tub

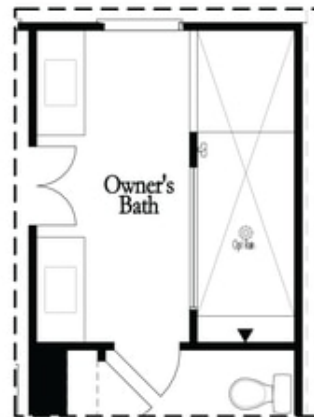


Opt. Walk-Through Shower

Owner's Front - Options



Opt. Shower/Tub



Opt. Walk-Through Shower

Owner's Rear - Options

**Want to Know More  
 About This Home?**

CONTACT OUR COMMUNITY SALES MANAGER  
 Call Us @ 470.456.9551