



PRICED AT  
**\$588,050**

 2030 Sq Ft

 3 Beds

 2.5 Baths

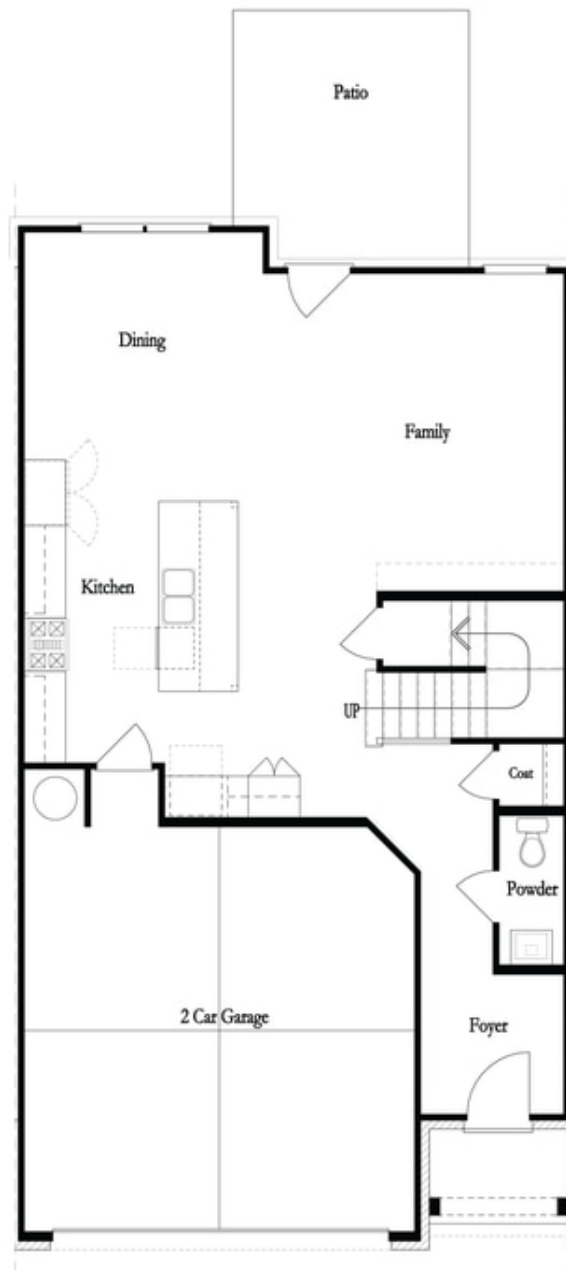
 2 Car Garage

 2.0 Story

New Year, New Home, New You! Sought after Stockton 2-story TH in a desirable community of Ellington by The Providence Group! Chef's like Kitchen is made for entertainment, 12' double sliding door leading to covered patio with fully fenced backyard overlooking private treed yard. Warm Linen Designer Collection in the kitchen include a Large island, quartz countertops, stainless appliances and tile backsplash. At second level you will find spacious Owner's Suite with an oversized walk-in closet, Spa-Like Bath with double vanities & Walk-Through Shower with drying area. Both secondary bedrooms feature walk-in closets. Secondary Bath with double vanities and door separates tub/shower & toilet room. Hard surface flooring throughout main level, stairs and upstairs hallway. Laundry room conveniently located and the second floor as well. This home is Under Construction with an estimated Completion March-April 2024. Ellington community situated in a highly desirable location in Gwinnett County and close to 3 vibrant cities - downtown Sugar Hill, Suwanee Town Center and Buford!! Amenities include a Pool, Clubhouse, Playground, Five pocket Parks as well as paved walkway to Peachtree Ridge Park. Easy Access to interstates, shopping and restaurants. \$5,000 in closing cost incentive with the use of one of the Preferred ...

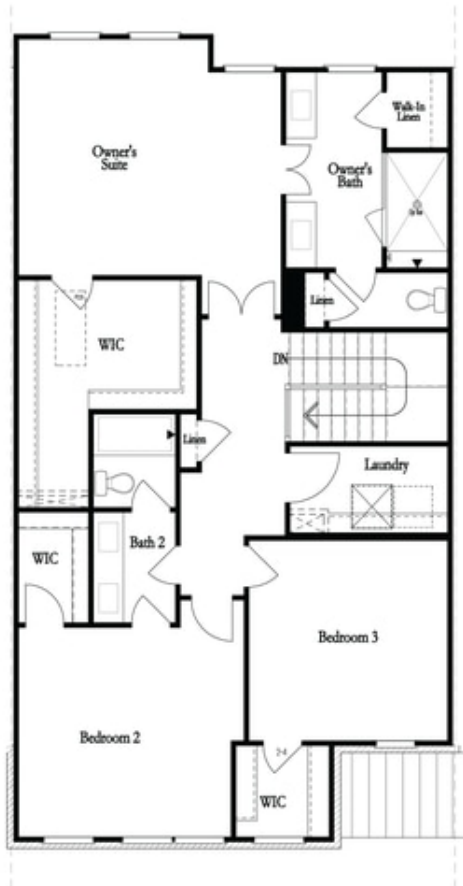
**Want to Know More  
About This Home?**

CONTACT OUR COMMUNITY SALES MANAGER  
Call Us @ 470.456.9551

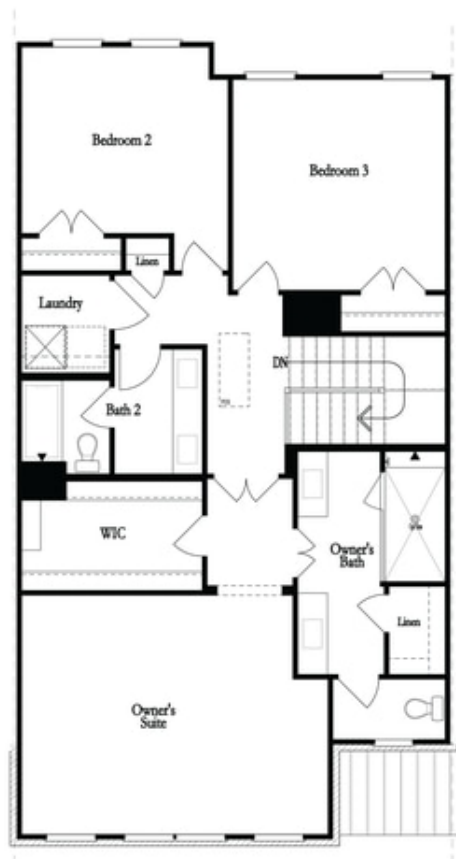


**Want to Know More  
About This Home?**

CONTACT OUR COMMUNITY SALES MANAGER  
Call Us @ 470.456.9551



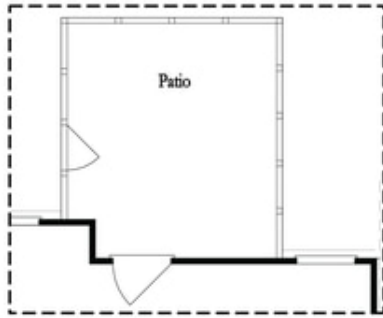
Second Floor - Owner's Rear



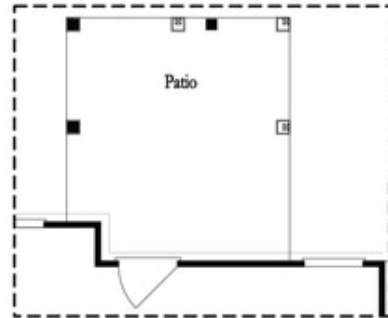
Second Floor - Owner's Front

**Want to Know More  
 About This Home?**

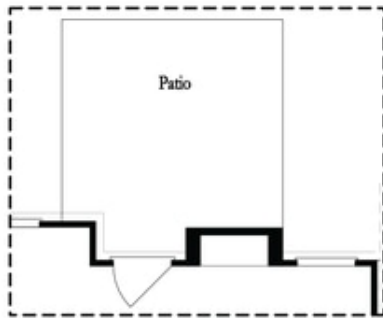
CONTACT OUR COMMUNITY SALES MANAGER  
 Call Us @ 470.456.9551



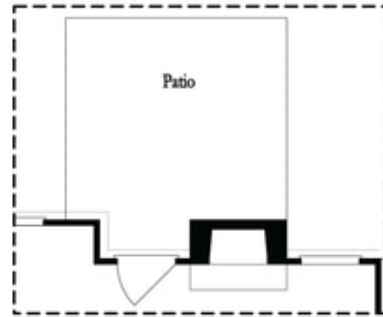
Opt. Screened Patio



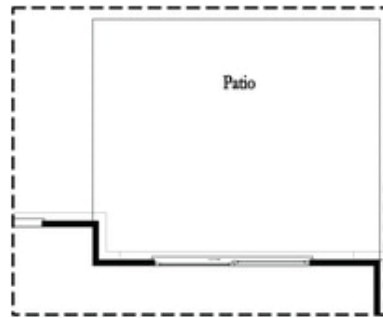
Opt. Coverd Patio



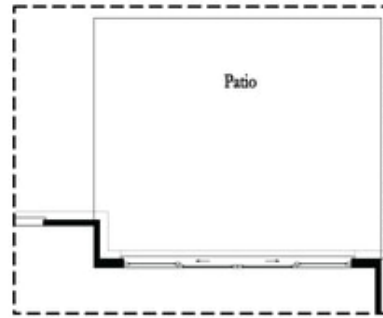
Opt. Linear Fireplace



Opt. Fireplace



Opt. 8 Foot Slider Door

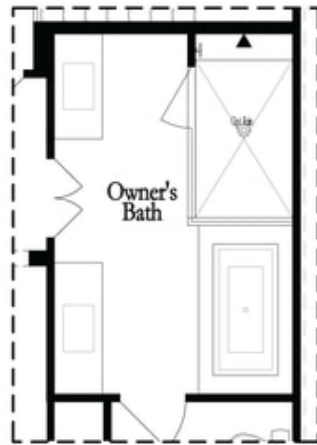


Opt. 12 Foot Slider Door

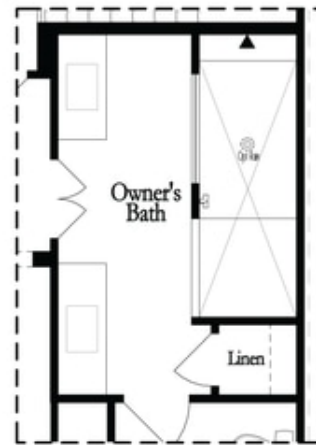
Main Level Options

**Want to Know More  
 About This Home?**

CONTACT OUR COMMUNITY SALES MANAGER  
 Call Us @ 470.456.9551

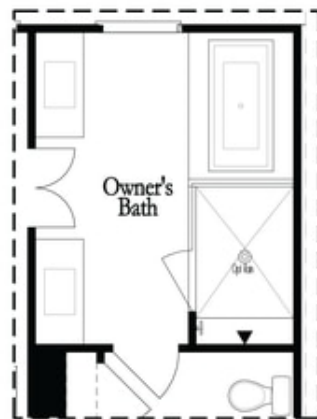


Opt. Shower/Tub

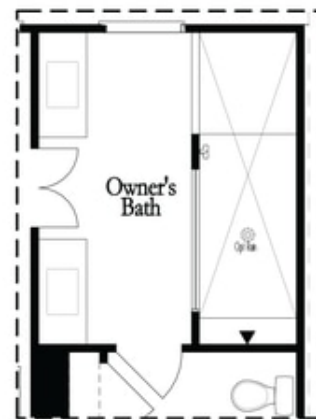


Opt. Walk-Through Shower

Owner's Front - Options



Opt. Shower/Tub



Opt. Walk-Through Shower

Owner's Rear - Options

**Want to Know More  
About This Home?**

CONTACT OUR COMMUNITY SALES MANAGER  
Call Us @ 470.456.9551