



PRICED AT
\$497,900

 1893 Sq Ft

 3 Beds

 3.5 Baths

 2 Car Garage

 3.0 Story

Elevate your life in 2023! Glendale J1 Floor Plan By The Providence Group - This desirable floor plan offers a private bedroom on the terrace level with a full bath. Your main level is what open concept living is all about this plan has a sunroom and a Gourmet kitchen w/island, quartz countertops. On the upper level you will find your primary suite with huge enlarged shower and drying area. Separate laundry room. The secondary bedroom comes with full bath. Community amenities include a gated entrance, cabana, pool, five pocket parks and access to County Park trails and a path to Peachtree Ridge Park! **QUICK MOVE-IN!** . Photos are not actual home but of previously built Glendale plan.

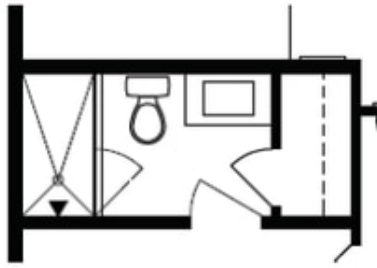
**Want to Know More
About This Home?**

CONTACT OUR NEW HOME NAVIGATOR
Call Us @ 470.456.9551

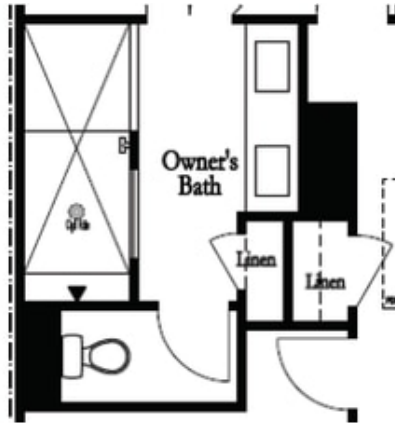


Want to Know More
About This Home?

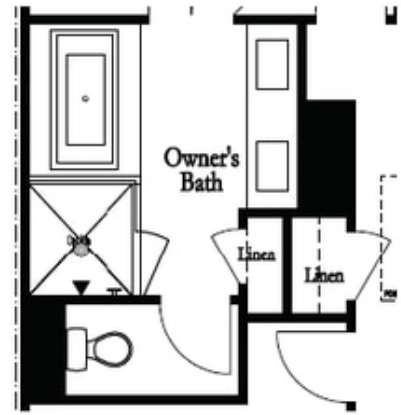
CONTACT OUR NEW HOME NAVIGATOR
Call Us @ 470.456.9551



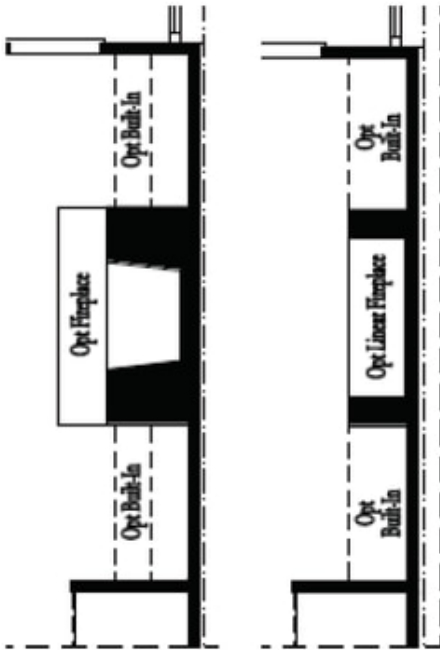
Optional Bath 3 Shower ilo Tub



Optional Owner's Luxury Shower

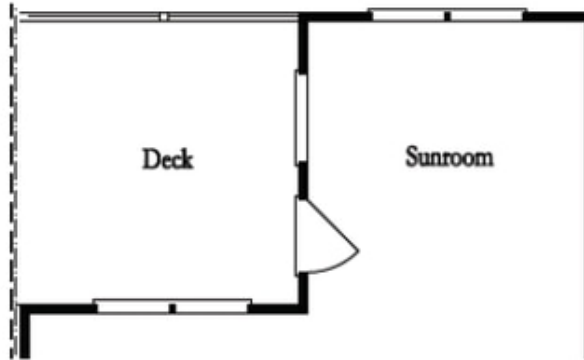


Optional Owner's Shower & Tub

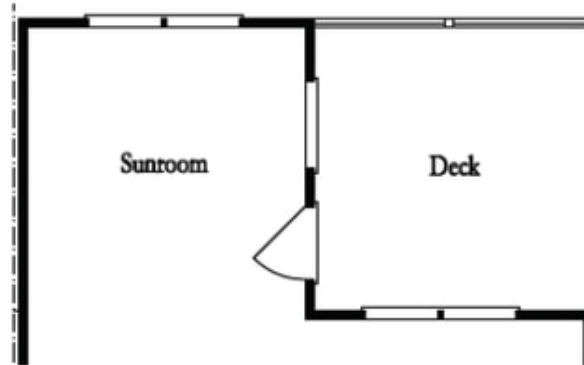


Optional Family Room Fireplace

Optional Family Room Linear Fireplace



Optional Sunroom 1 ilo Extended Deck



Optional Sunroom 2 ilo Extended Deck

**Want to Know More
About This Home?**

CONTACT OUR NEW HOME NAVIGATOR
Call Us @ 470.456.9551