



PRICED AT
\$501,550

 1893 Sq Ft

 3 Beds

 3.5 Baths

 2 Car Garage

 3.0 Story

Spring Into Savings with \$10K towards closing costs. Offer only available on contracts written by April 30, 2023 when financing with one of Seller's 4 preferred lenders. Upon entering the terrace level foyer, you will find an adjacent private bedroom and bath! This room could also make a great home office. The natural slate tones provide for a beautifully designed kitchen that has an oversized island featuring quartz countertops, stainless appliances and tile backsplash! With an open concept, you have a view to the family room and dining area. The family room has access to the deck for a great outdoor space. On the upper level you will find your primary suite featuring a wonderful bathroom that has a dual vanity, separate tub and shower. A secondary bedroom with private bath is located down the hallway. The laundry area is on the upper floor to provide you with easy convenience. Community amenities include a gated entrance, clubhouse, pool, playground, five pocket parks and access to County Park Trails and a path to Peachtree Ridge Park! Photos are not actual home but of previously built Glendale plan.

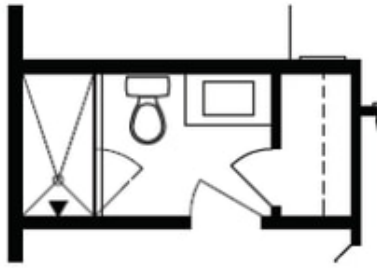
**Want to Know More
About This Home?**

CONTACT OUR NEW HOME NAVIGATOR
Call Us @ 470.456.9551

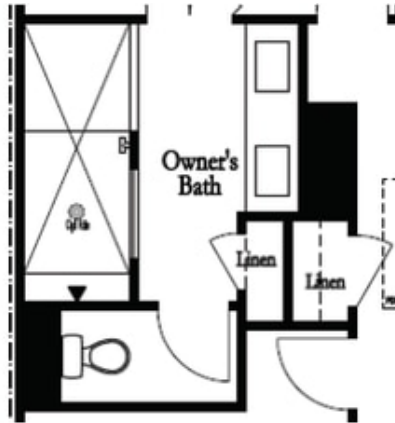


**Want to Know More
 About This Home?**

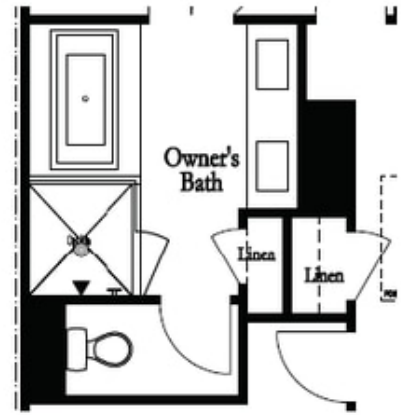
CONTACT OUR NEW HOME NAVIGATOR
 Call Us @ 470.456.9551



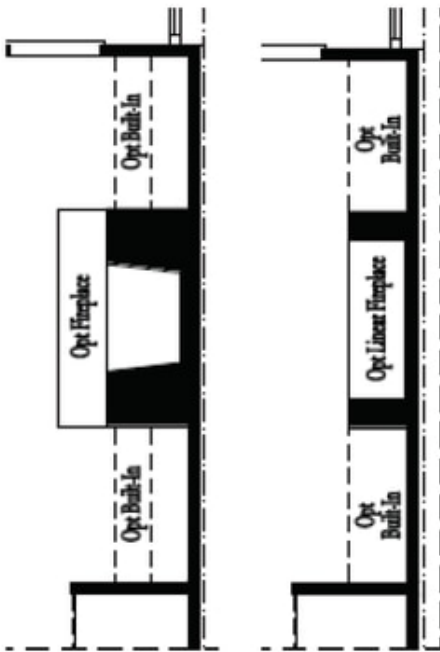
Optional Bath 3 Shower ilo Tub



Optional Owner's Luxury Shower

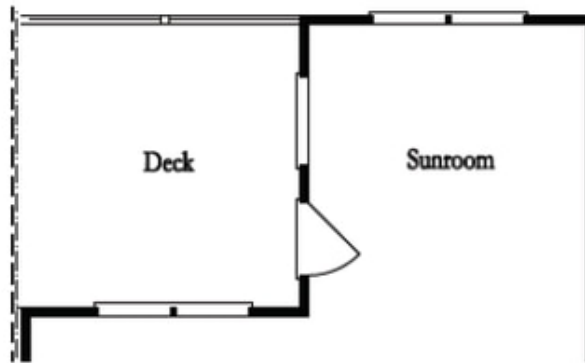


Optional Owner's Shower & Tub

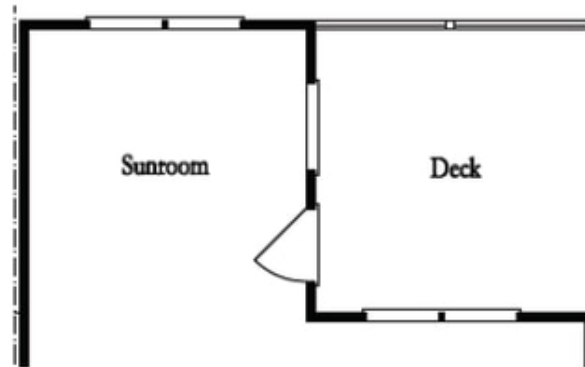


Optional
Family Room
Fireplace

Optional
Family Room
Linear Fireplace



Optional Sunroom 1 ilo Extended Deck



Optional Sunroom 2 ilo Extended Deck

**Want to Know More
About This Home?**

CONTACT OUR NEW HOME NAVIGATOR
Call Us @ 470.456.9551