



PRICED AT
\$502,900

 1893 Sq Ft

 3 Beds

 3.5 Baths

 2 Car Garage

 3.0 Story

ELEVATE YOUR LIFE IN 2023! NEW YEAR NEW PRICE PLUS \$20,000 ANY WAY YOU WANT IT ON CONTRACTS WRITTEN BY MARCH 31, 2023. This desirable 3 story floor plan offers a terrace level entry that has a private bedroom and bath! The main level features open concept living! This home has a large kitchen with an oversized island featuring quartz countertops, white cabinets and stainless steel appliances. Kitchen opens to the Dining & Family that connects to light filled Sunroom with direct access to the Deck for a great outdoor entertainment! On the upper level you will find your Owner's Suite with walk-in shower, dual vanities and an oversized walk-in closet. Separate laundry room and another secondary bedroom with a private full bath! Community amenities include a gated entrance, clubhouse, pool, playground, five pocket parks and access to County Park trails and a path to Peachtree Ridge Park! **QUICK MOVE-IN.** Photos are not actual home but of previously built Glendale plan.

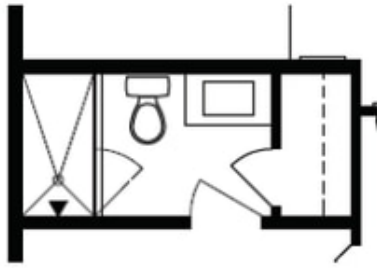
**Want to Know More
About This Home?**

CONTACT OUR NEW HOME NAVIGATOR
Call Us @ 470.456.9551

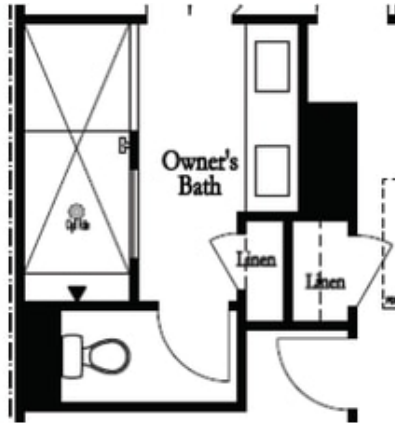


Want to Know More
About This Home?

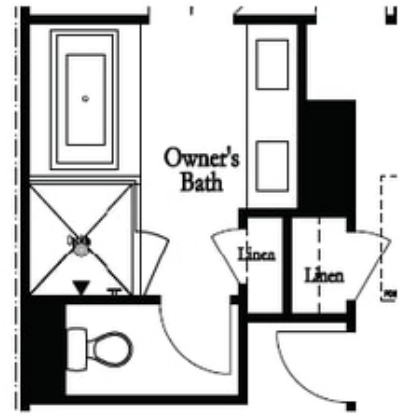
CONTACT OUR NEW HOME NAVIGATOR
Call Us @ 470.456.9551



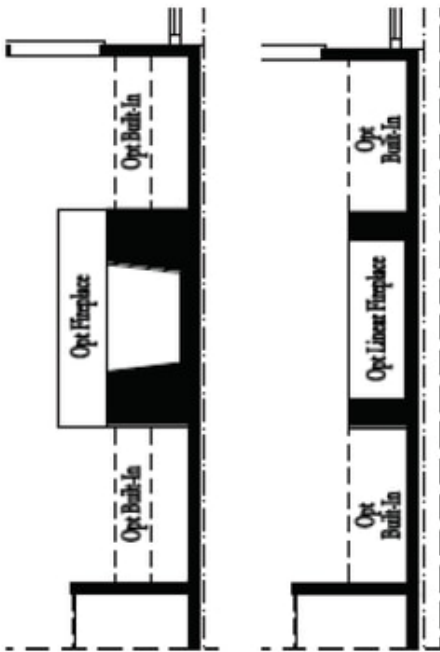
Optional Bath 3 Shower ilo Tub



Optional Owner's Luxury Shower

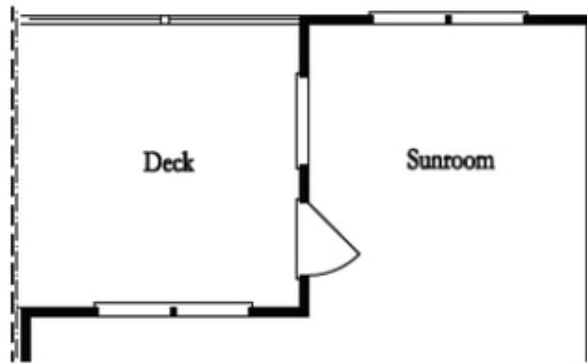


Optional Owner's Shower & Tub

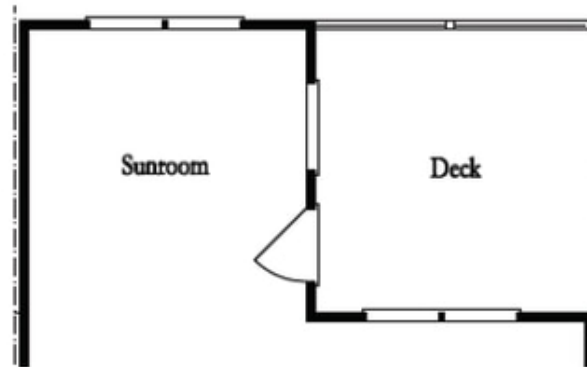


Optional
 Family Room
 Fireplace

Optional
 Family Room
 Linear Fireplace



Optional Sunroom 1 ilo Extended Deck



Optional Sunroom 2 ilo Extended Deck

**Want to Know More
 About This Home?**

CONTACT OUR NEW HOME NAVIGATOR
 Call Us @ 470.456.9551