



PRICED AT
\$495,650

 1893 Sq Ft

 3 Beds

 3.5 Baths

 2 Car Garage

 3.0 Story

Glendale J1 Floor Plan By The Providence Group - This desirable floor plan offers a private bedroom on the terrace level with a full bath. Your main level is what open concept living is all about this plan has a fireplace and a large kitchen w/island, quartz countertops. On the upper level you will find your primary suite. Separate laundry room. The secondary bedroom comes with full bath. Community amenities will include a gated entrance, cabana, pool, five pocket parks and access to County Park trails and a path to Peachtree Ridge Park! Oct/Nov 2022. *THIS HOME IS CURRENTLY UNDER CONSTRUCTION. Photos are not actual home but of previously built Glendale plan

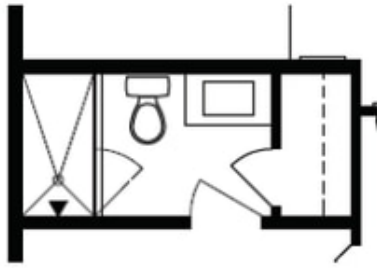
**Want to Know More
About This Home?**

CONTACT OUR NEW HOME NAVIGATOR
Call Us @ 470.456.9551

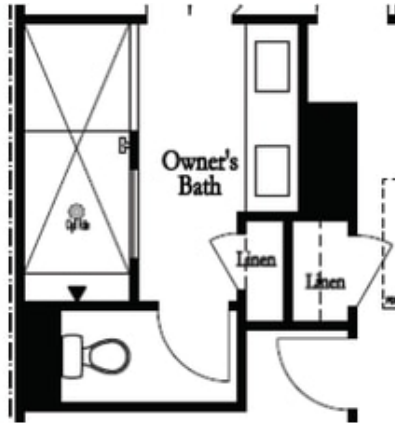


**Want to Know More
 About This Home?**

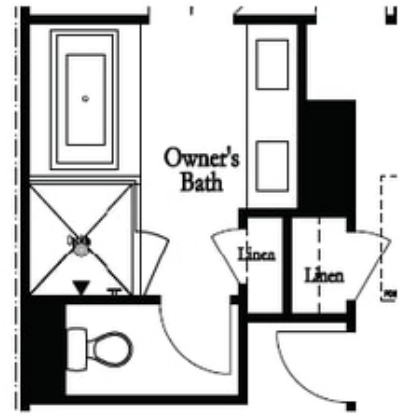
CONTACT OUR NEW HOME NAVIGATOR
 Call Us @ 470.456.9551



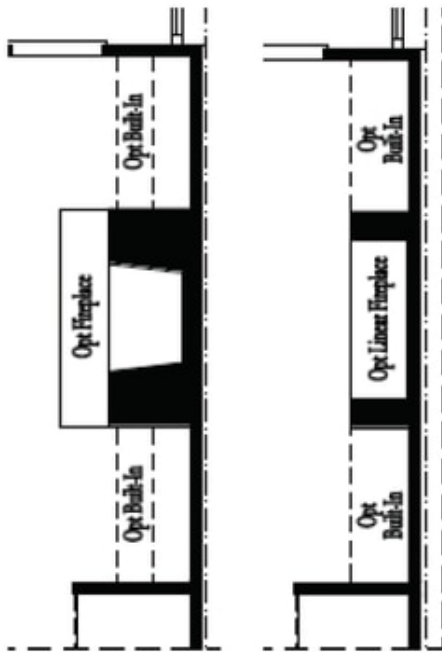
Optional Bath 3 Shower ilo Tub



Optional Owner's Luxury Shower

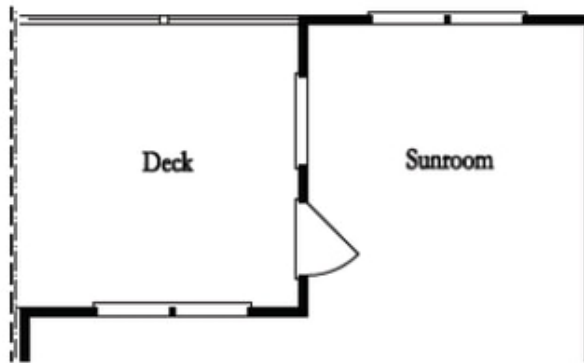


Optional Owner's Shower & Tub

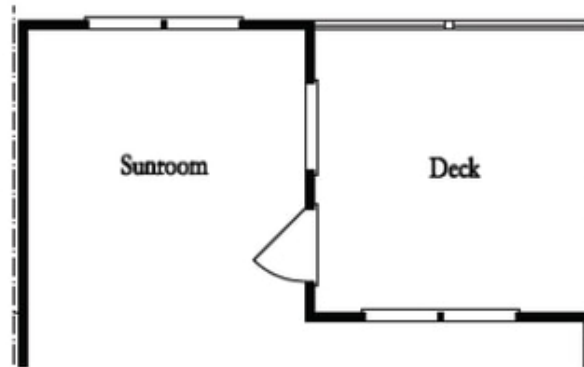


Optional
 Family Room
 Fireplace

Optional
 Family Room
 Linear Fireplace



Optional Sunroom 1 ilo Extended Deck



Optional Sunroom 2 ilo Extended Deck

**Want to Know More
 About This Home?**

CONTACT OUR NEW HOME NAVIGATOR
 Call Us @ 470.456.9551