



PRICED AT
\$741,920

 2468 Sq Ft

 3 Beds

 3.0 Baths

 2 Car Garage

 2.0 Story

OWNER SUITE ON MAIN!!!! Elevate your Life in 2023! Sought after Bayfield plan with Two Bedrooms including Owner's Bedroom on Main Level! This open layout is perfect for entertaining & features a Family room, Breakfast room, a Sunroom that can be used as separate Dining. Beautiful Gourmet Kitchen with Butler's Pantry, large Island with stainless appliances & quartz countertops. Owners suite is located on the 1st floor with dual vanities in the Owners Spa-like Bath & large walk-in closet. Second Floor has Full Bedroom/Bathroom and Loft/Bonus Room, lots of storage at easily accessible attic. Community Amenities include a gated entrance, club house, pool, five pocket parks, paved walkway to Peachtree Ridge Park. Ellington is located within the desirable Peachtree Ridge School District and just a short 3 mile drive from the award winning Suwanee Towne Center! This home is under construction with Estimated Move-in: November - December 2023.

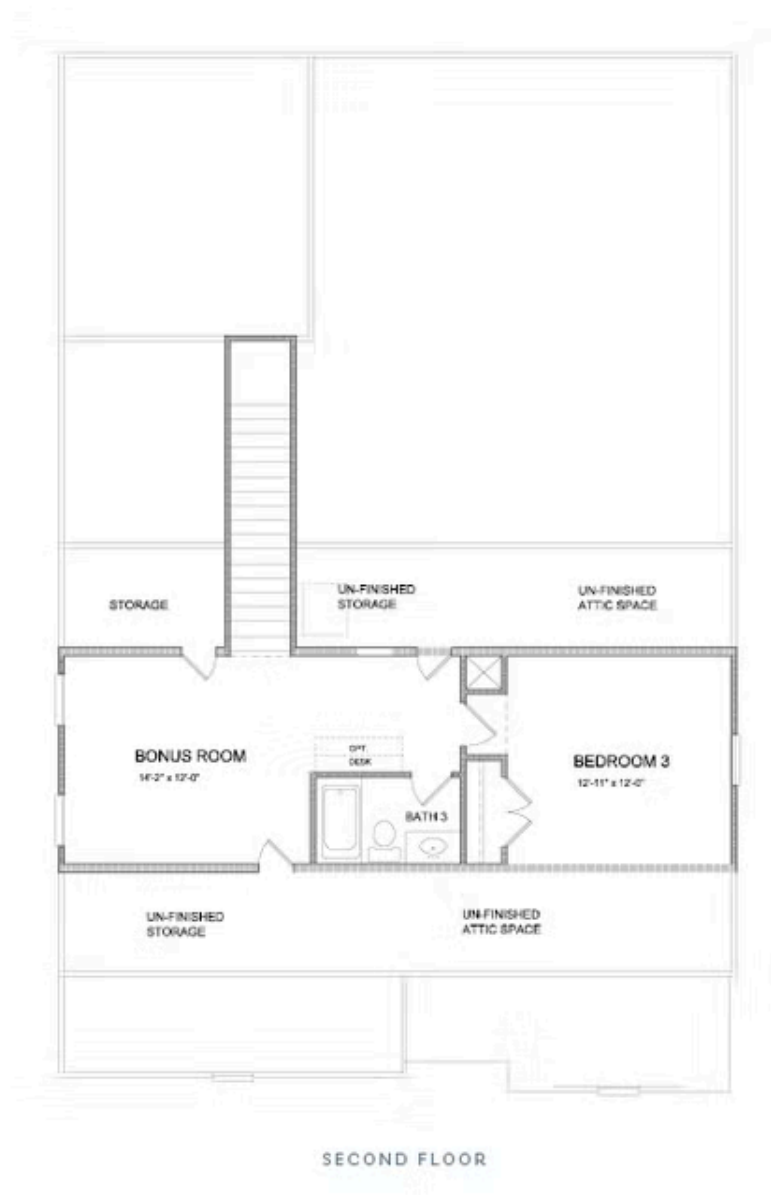
**Want to Know More
About This Home?**

CONTACT OUR COMMUNITY SALES MANAGER
Call Us @ 470.456.9551



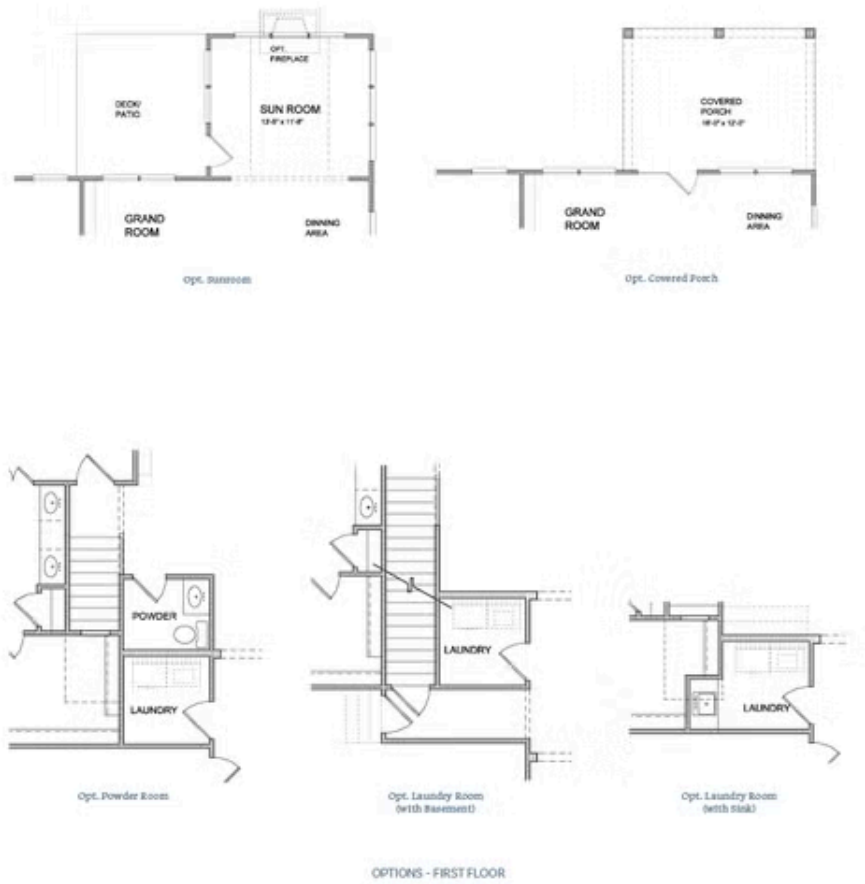
Want to Know More
About This Home?

CONTACT OUR COMMUNITY SALES MANAGER
Call Us @ 470.456.9551



**Want to Know More
About This Home?**

CONTACT OUR COMMUNITY SALES MANAGER
Call Us @ 470.456.9551



Want to Know More
About This Home?

CONTACT OUR COMMUNITY SALES MANAGER
Call Us @ 470.456.9551