



PRICED AT
\$798,150

 **3059 Sq Ft**

 **4 Beds**

 **4.0 Baths**

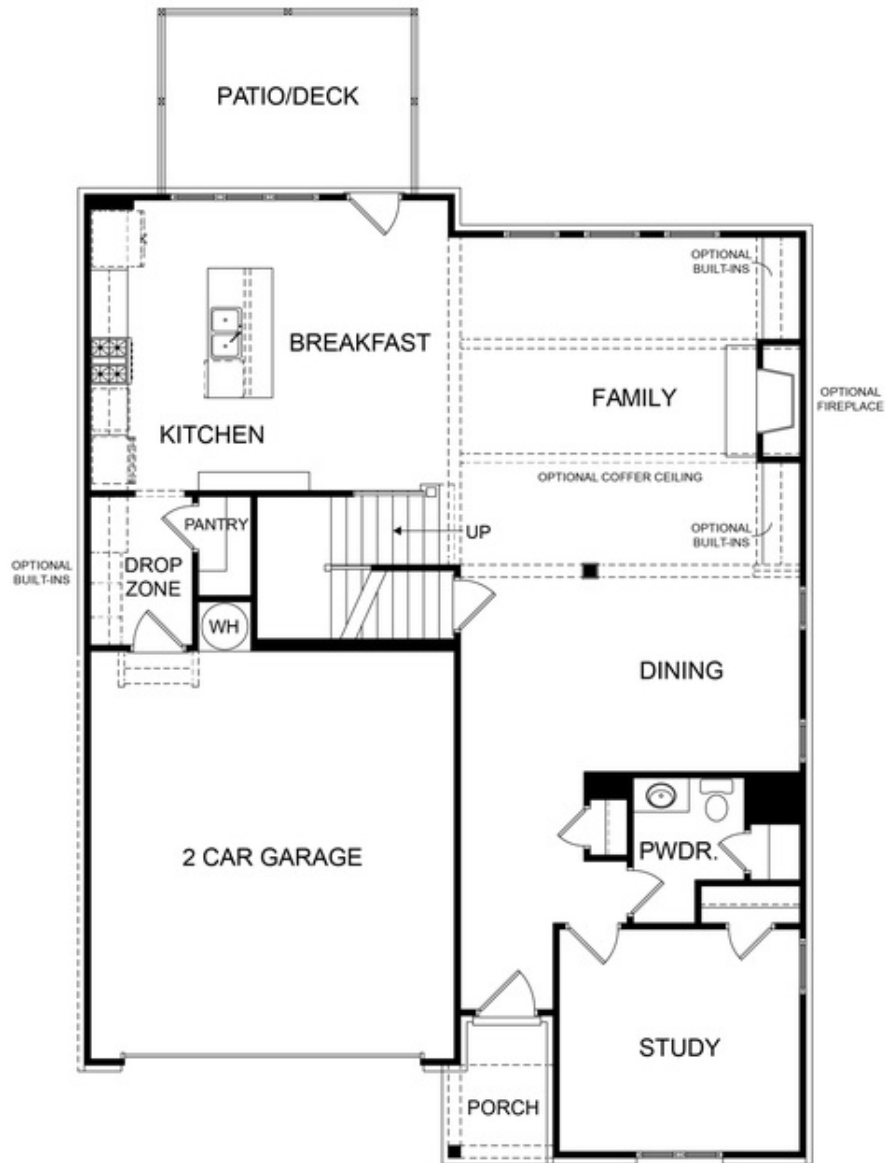
 **2 Car Garage**

 **3.0 Story**

Welcome Home to this beautiful open concept floor plan featuring 10' ceilings on the main floor and a guest retreat with full bath. The gourmet kitchen has plenty of cabinets, Stainless Steel Appliances, pantry & an oversized island with views to family and breakfast room. Separate Dining, Two - Story Family, Sunroom leading to private deck. The owners suite is very spacious and has His & Her walk-in closets. Enjoy the Spa-like Bath offering a dual vanity, walk-in shower, soaking tub. 2 additional bedrooms each with separate bathrooms and Laundry. This home is to be built, with estimated completion: Fall 2023. Community Amenities include a gated entrance, clubhouse, pool, playground, five pocket parks and access to County park trails and a path to Peachtree Ridge Park. Ellington is located within the desirable Peachtree Ridge School District and just a short 3 mile drive from the award winning Suwanee Towne Center! Come in now and you can pick out your interior finishes and make this one your own!!! Pictures are same floorplan but NOT actual home. Up to \$5k closing cost incentive with use of one of the Preferred Lenders - Ameris Bank, Capital City Home Loans, New American Funding, Renasant ...

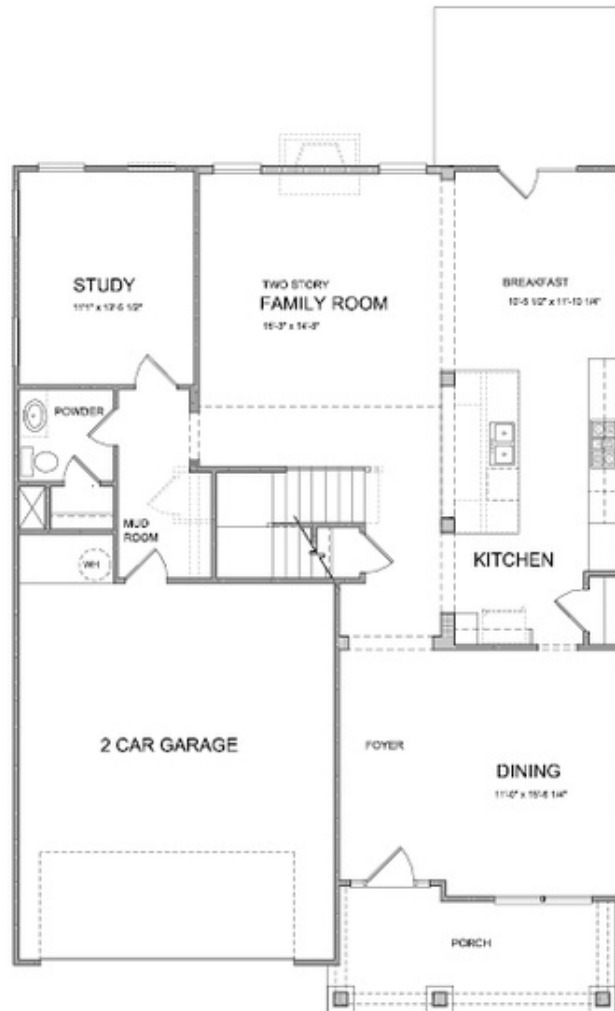
**Want to Know More
About This Home?**

CONTACT OUR COMMUNITY SALES MANAGER
Call Us @ 470.456.9551



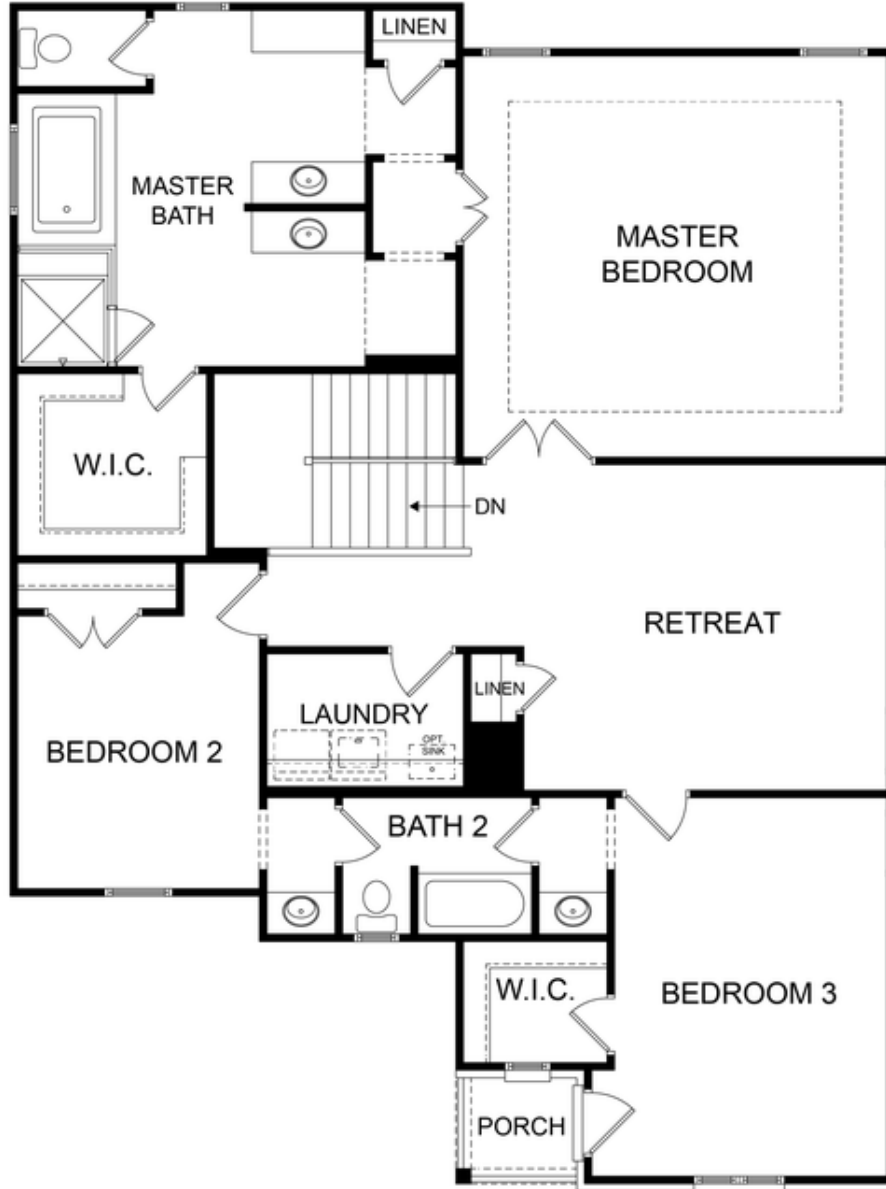
Want to Know More
About This Home?

CONTACT OUR COMMUNITY SALES MANAGER
Call Us @ 470.456.9551



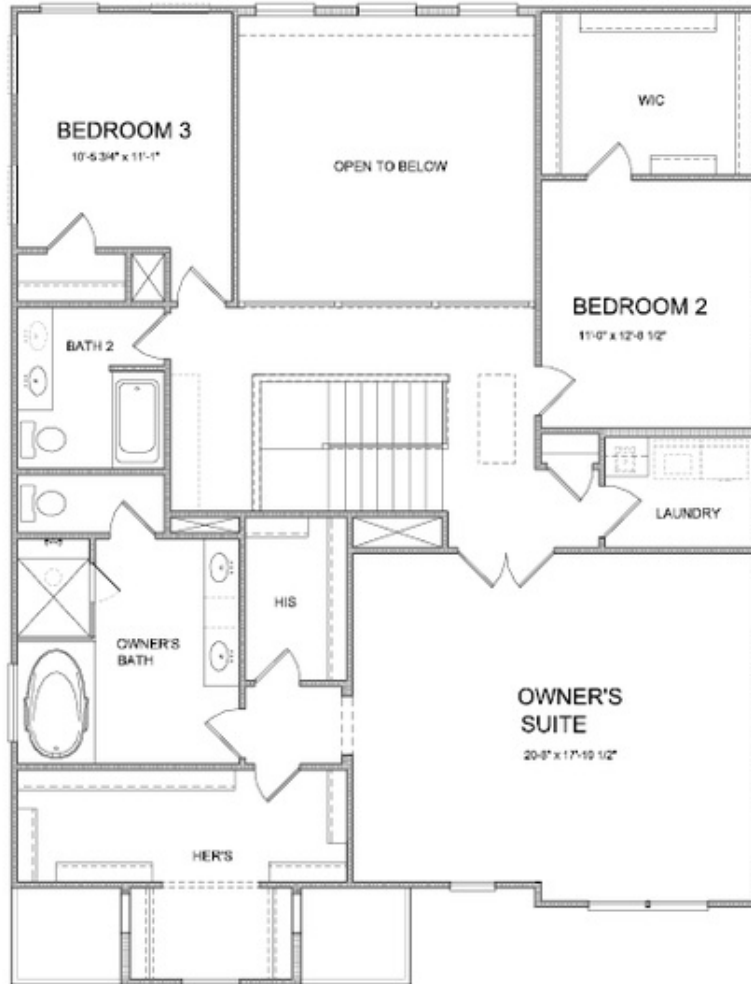
Want to Know More
About This Home?

CONTACT OUR COMMUNITY SALES MANAGER
Call Us @ 470.456.9551



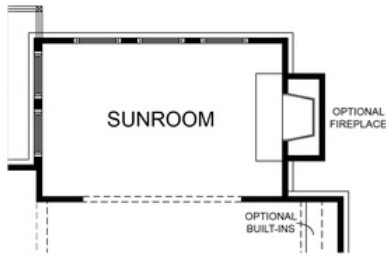
Want to Know More
About This Home?

CONTACT OUR COMMUNITY SALES MANAGER
Call Us @ 470.456.9551



Want to Know More
About This Home?

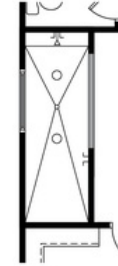
CONTACT OUR COMMUNITY SALES MANAGER
Call Us @ 470.456.9551



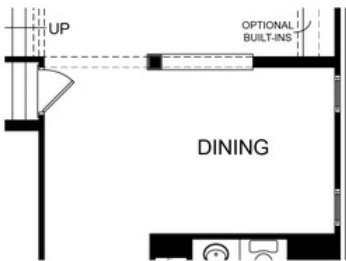
OPT. SUNROOM



OPT. SITTING ROOM



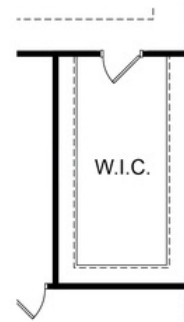
OPT. WALK-IN SHOWER



OPT. DIVISION WALL FOR DINING



OPT. BEDROOM WITH BATH ILO STUDY



OPT. ADDITIONAL WALK-IN CLOSET

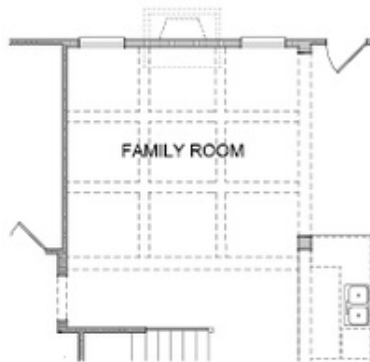
Want to Know More
About This Home?

CONTACT OUR COMMUNITY SALES MANAGER
Call Us @ 470.456.9551



Want to Know More
About This Home?

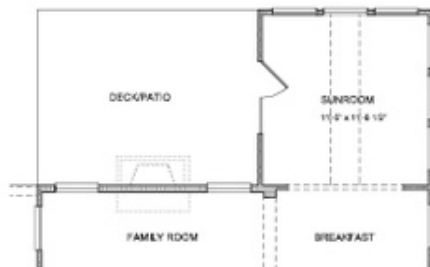
CONTACT OUR COMMUNITY SALES MANAGER
Call Us @ 470.456.9551



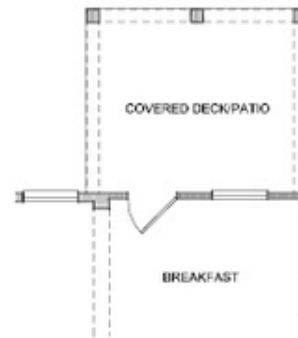
*Opt. Coffered Ceilings
 w/ Opt. Media Room or Bedroom 5 above*



*Opt. Bedroom 4 w/ Full Bath
 as Study & Power Room*



Opt. Sunroom



Opt. Covered Deck/Patio

**Want to Know More
 About This Home?**

CONTACT OUR COMMUNITY SALES MANAGER
Call Us @ 470.456.9551



Opt. Full Bath 3
on Bedroom 2



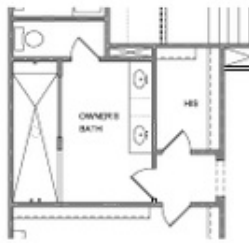
Opt. In-Law Suite on
Bedroom 3



Opt. Bedroom 5
w/ Open Ceiling on Family Room



Opt. Bedroom 5 w/ Full Bath
w/ Open Ceiling on Family Room



Opt. Walk-In Shower



Opt. Media Room
w/ Open Ceiling on Family Room

Want to Know More
About This Home?

CONTACT OUR COMMUNITY SALES MANAGER
Call Us @ 470.456.9551