



PRICED AT
\$594,900

 2036 Sq Ft

 3 Beds

 2.5 Baths

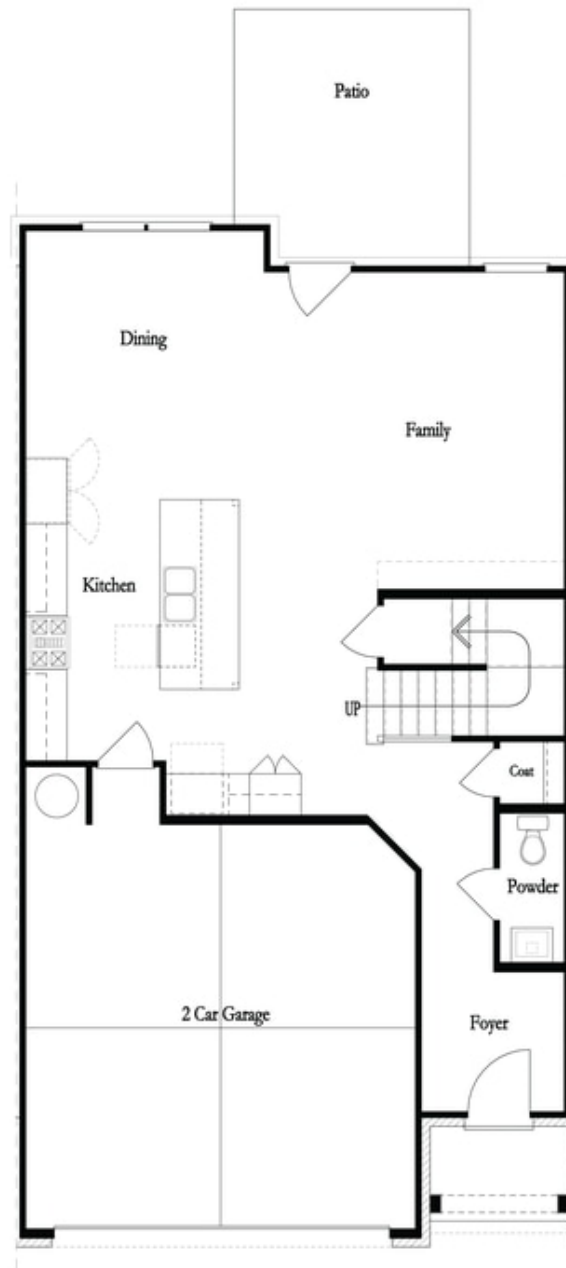
 2 Car Garage

 2.0 Story

Must see this highly sought after layout - built by The Providence Group! The Stockton plan built on an UNFINISHED DAYLIGHT BASEMENT overlooking wooded backyard. This END UNIT has an Oversized back deck and is perfect for outdoor entertainment. Two-Car garage in the front leads to a light filled Kitchen with white cabinets, 3x12 white gloss tile backsplash, quartz countertops, stainless steel appliances, and oversized island. Open concept Dining/Family room leads onto deck. On the second floor you will find a spacious Owner's suite with large walk-in shower, His/Hers vanities and oversized walk-in closet. Two secondary bedrooms, each with walk-in-closet share a full Bath. The laundry room is also located on the upper floor making laundry day super easy. This home is Under Construction with an estimated Completion May/June 2023. This community is in highly desirable location in Gwinnett County with direct access to Peachtree Ridge Park! Amenities include a Pool, Clubhouse, Playground as well as five community parks. Easy Access to interstates, shopping and restaurants. *Pictures are of a previously built home by the Providence Group., Photos are for representation purposes only and are not of the actual home since this home is currently under construction. Elevate your life ...

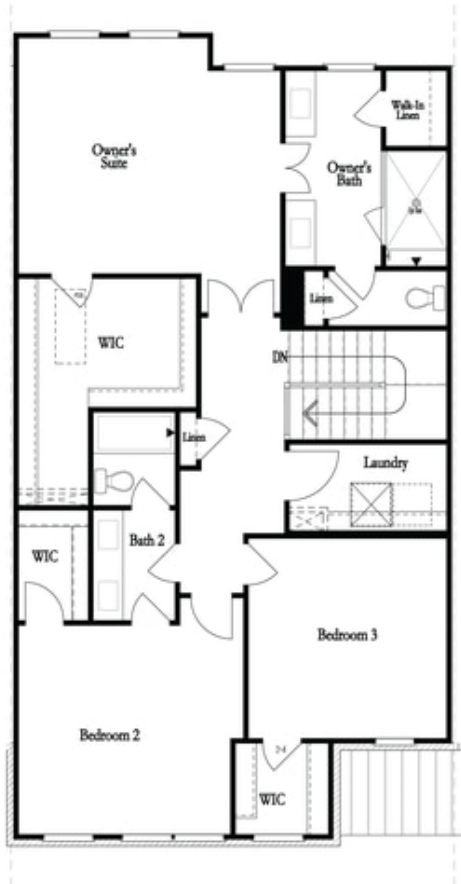
**Want to Know More
About This Home?**

CONTACT OUR NEW HOME NAVIGATOR
Call Us @ 470.456.9551

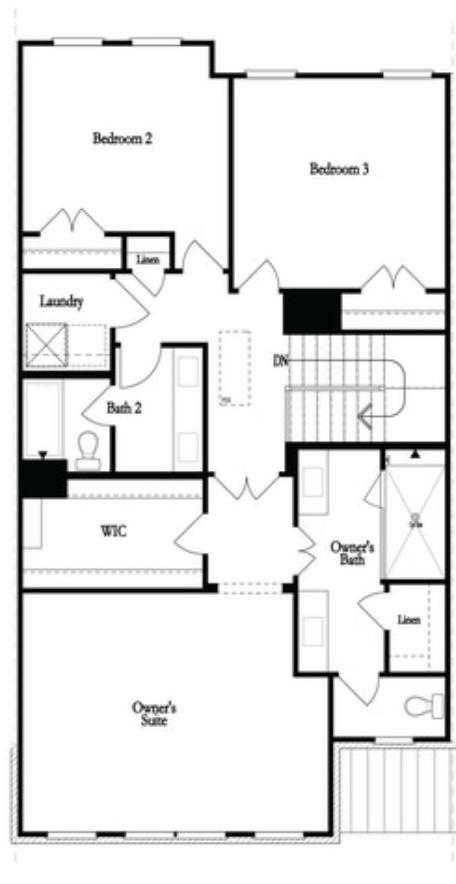


**Want to Know More
About This Home?**

CONTACT OUR NEW HOME NAVIGATOR
Call Us @ 470.456.9551



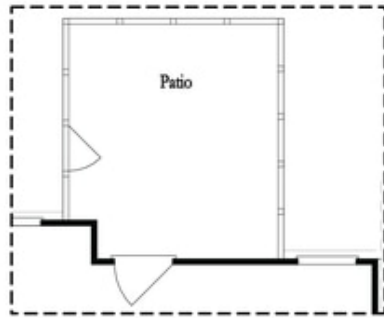
Second Floor - Owner's Rear



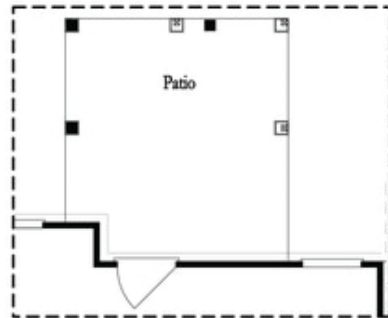
Second Floor - Owner's Front

**Want to Know More
About This Home?**

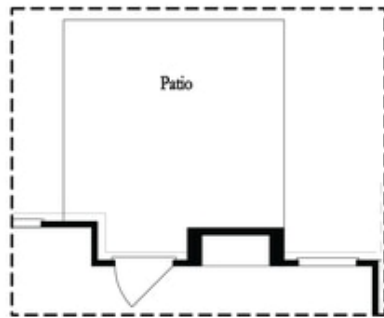
CONTACT OUR NEW HOME NAVIGATOR
Call Us @ 470.456.9551



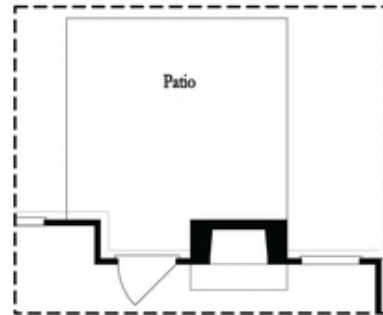
Opt. Screened Patio



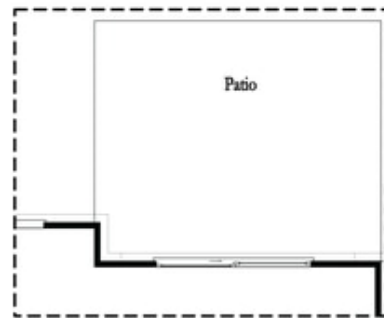
Opt. Covered Patio



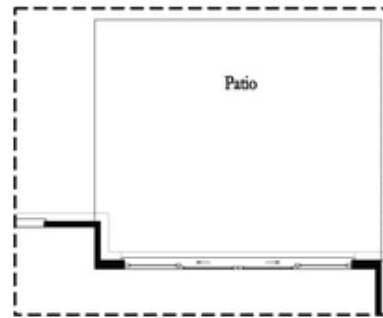
Opt. Linear Fireplace



Opt. Fireplace



Opt. 8 Foot Slider Door

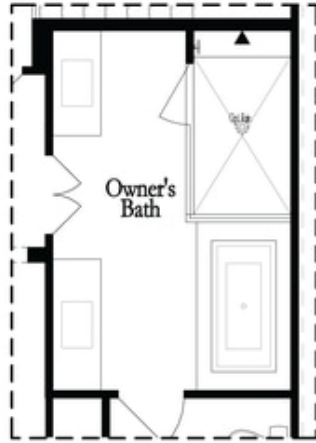


Opt. 12 Foot Slider Door

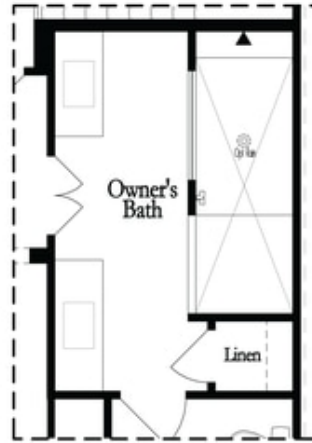
Main Level Options

**Want to Know More
About This Home?**

CONTACT OUR NEW HOME NAVIGATOR
Call Us @ 470.456.9551

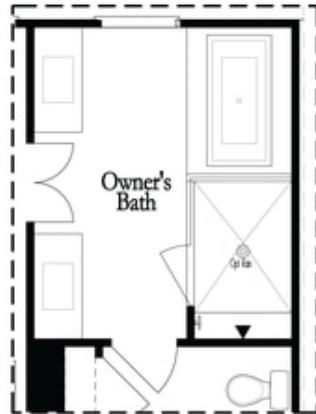


Opt. Shower/Tub

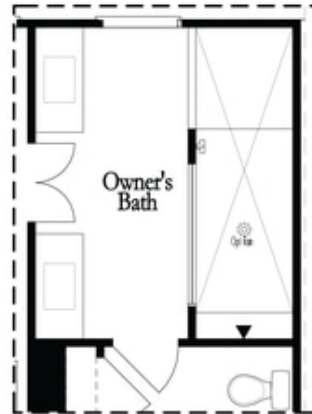


Opt. Walk-Through Shower

Owner's Front - Options



Opt. Shower/Tub



Opt. Walk-Through Shower

Owner's Rear - Options

**Want to Know More
 About This Home?**

CONTACT OUR NEW HOME NAVIGATOR
 Call Us @ 470.456.9551