



PRICED AT  
**\$818,750**

 3472 Sq Ft

 5 Beds

 4.0 Baths

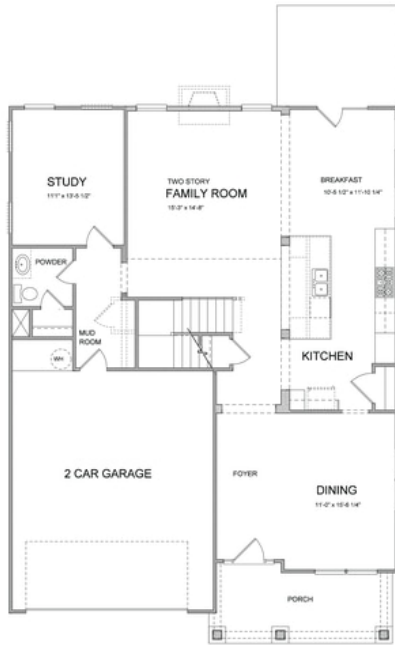
 2 Car Garage

 3.0 Story

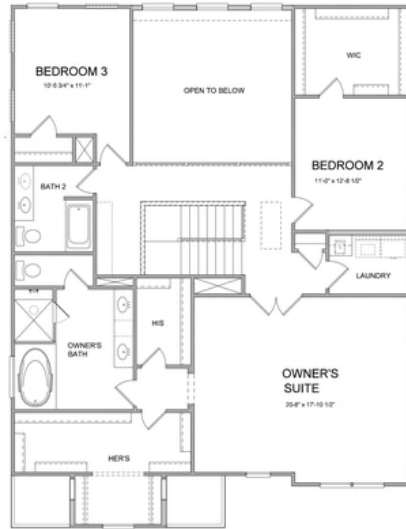
This beautiful open concept floor plan features 10' ceilings on the main floor and a huge gourmet kitchen. This gorgeous kitchen has white cabinets at perimeter and an extended Navy island that overlooks the family room with cozy fireplace. Additionally, the kitchen has Stainless Steel Appliances and quartz countertops. Just off the breakfast area is a sunroom that leads to a spacious patio. There is also a guest bedroom and bath on the main floor. Upstairs you will find the spacious owners suite with extra large his and hers walk-in closets and a spa like owners bath with 2 individual vanities, tub and separate shower. 3 other bedrooms and 2 baths finish out the upper floor. Community Amenities will include a gated entrance, clubhouse, pool, playground, five pocket parks and access to County park trails and a path to Peachtree Ridge Park. Ellington is located within the desirable Peachtree Ridge School District and just a short 3 mile drive from the award winning Suwanee Towne Center! Come in now and you can pick out your interior selections and make this one your own!!! Up to Elevate your Life in 2023! \$20k closing cost incentive with use of one of the ...

**Want to Know More  
About This Home?**

CONTACT OUR NEW HOME NAVIGATOR  
Call Us @ 470.456.9551



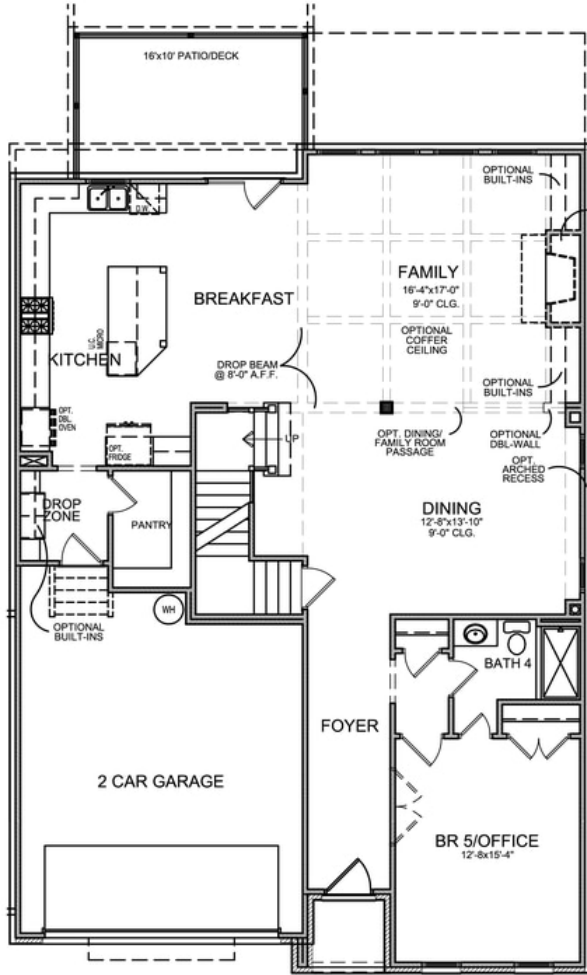
**First Floor**



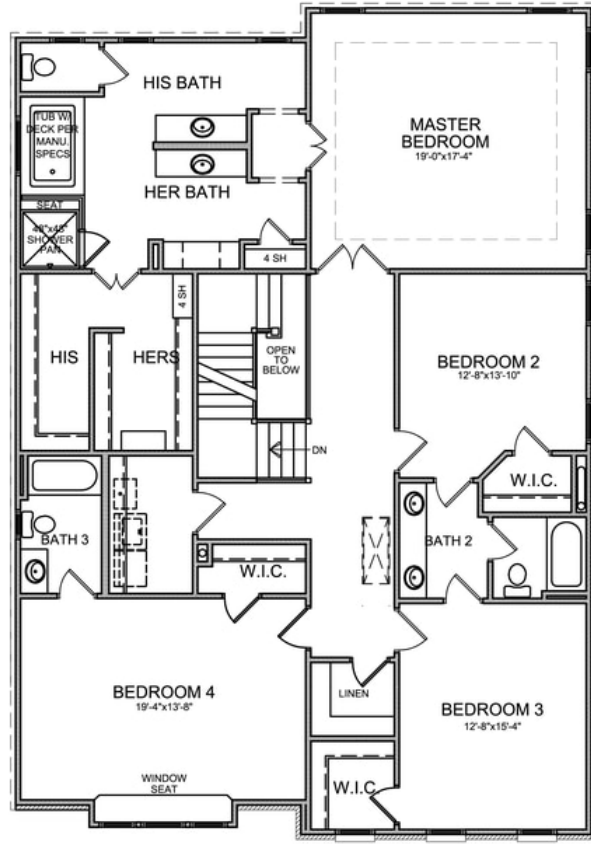
**Second Floor**

**Want to Know More  
 About This Home?**

CONTACT OUR NEW HOME NAVIGATOR  
 Call Us @ 470.456.9551



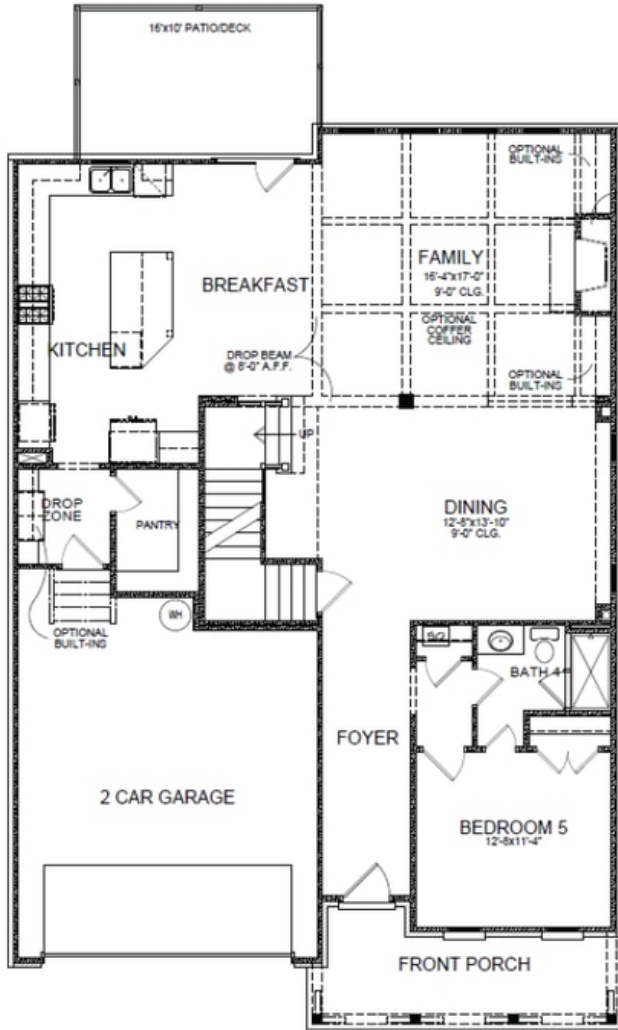
First Floor



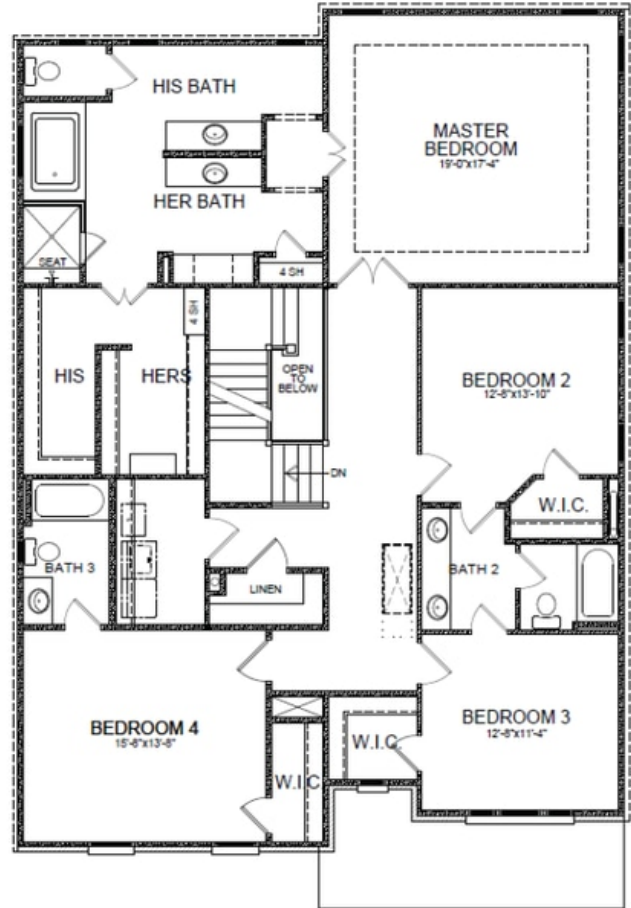
Second Floor

Want to Know More  
About This Home?

CONTACT OUR NEW HOME NAVIGATOR  
Call Us @ 470.456.9551



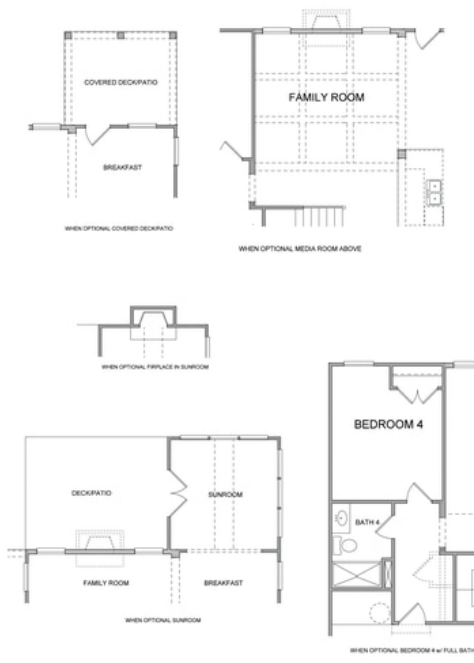
First Floor



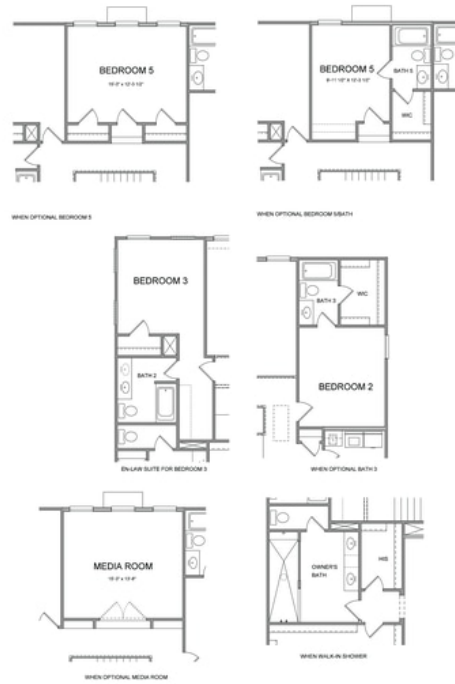
Second Floor

Want to Know More  
About This Home?

CONTACT OUR NEW HOME NAVIGATOR  
Call Us @ 470.456.9551



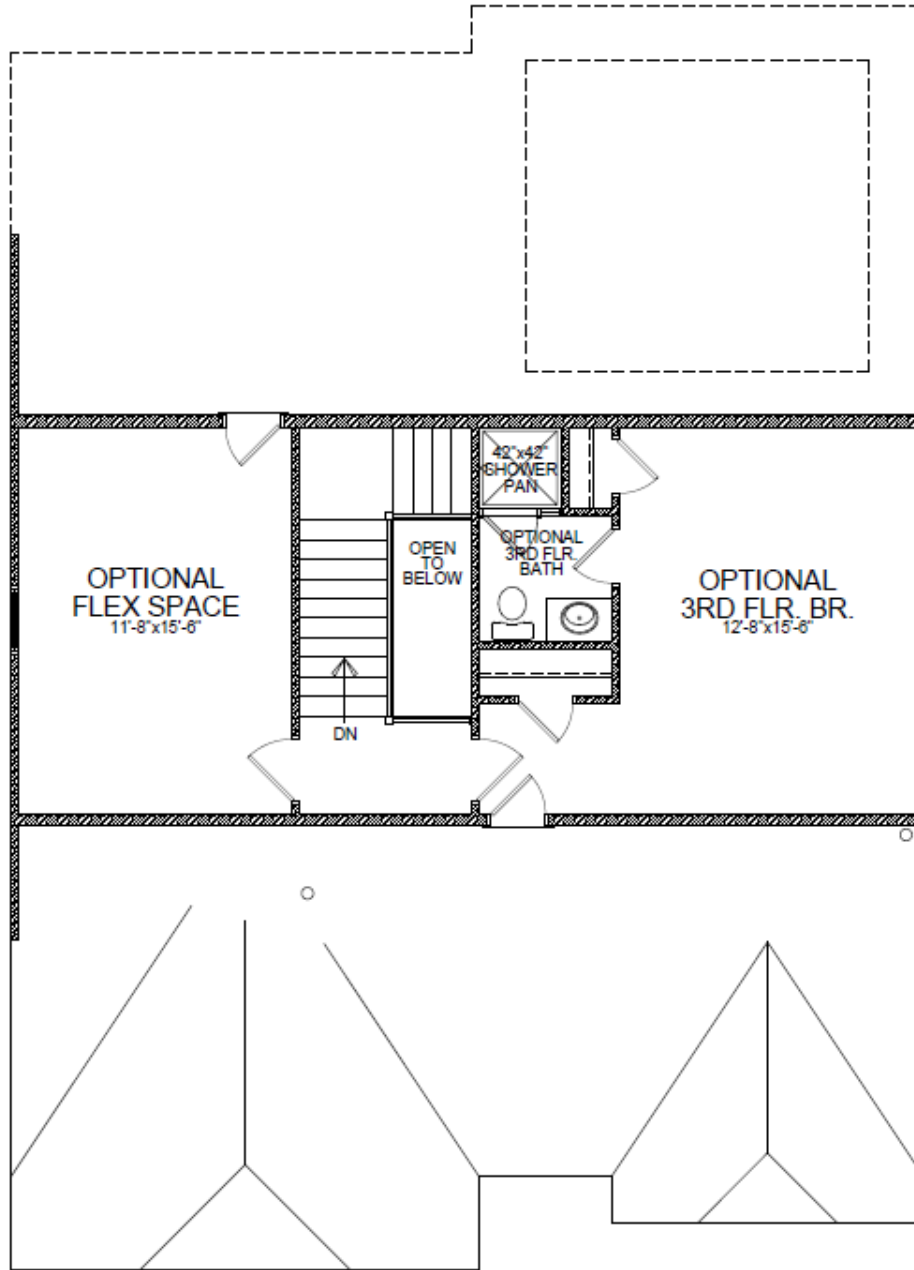
**First Floor Options**



**Second Floor Options**

**Want to Know More  
 About This Home?**

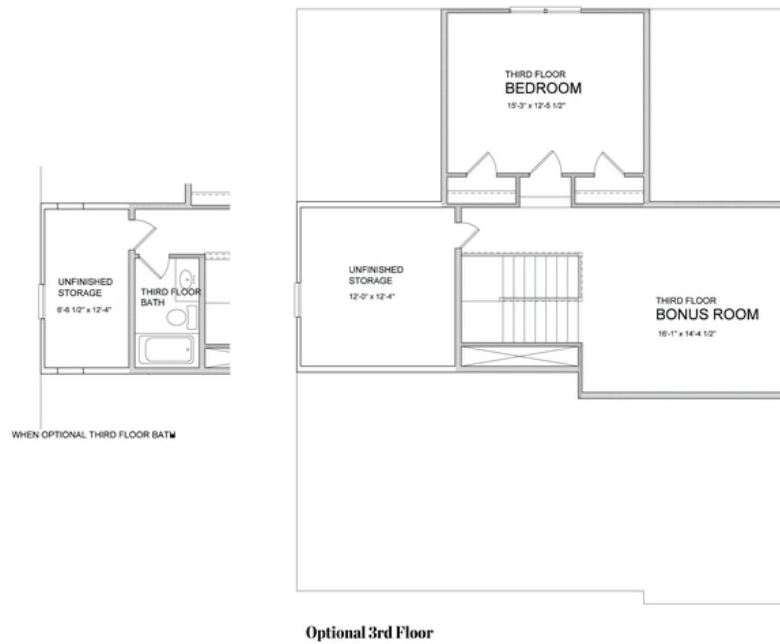
CONTACT OUR NEW HOME NAVIGATOR  
 Call Us @ 470.456.9551



OPT. THIRD FLOOR

**Want to Know More  
About This Home?**

CONTACT OUR NEW HOME NAVIGATOR  
Call Us @ 470.456.9551



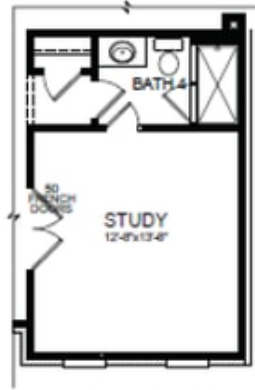
WHEN OPTIONAL THIRD FLOOR BATH

Optional 3rd Floor

Want to Know More  
About This Home?

CONTACT OUR NEW HOME NAVIGATOR  
Call Us @ 470.456.9551

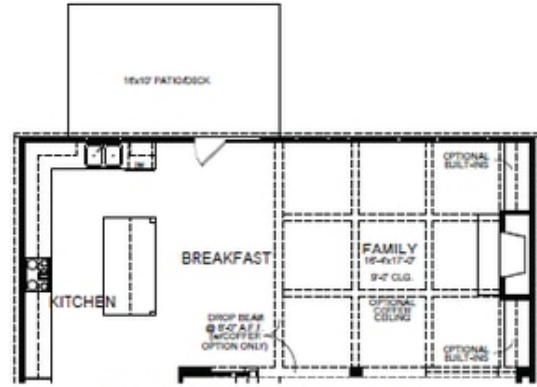
Optional Layouts



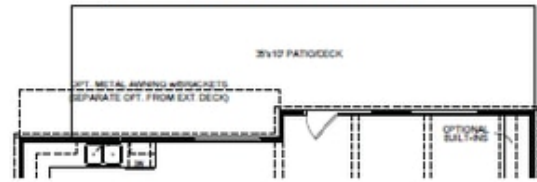
OPT. STUDY



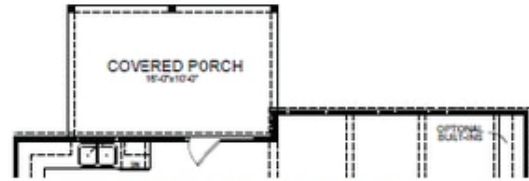
OPT. WALK-IN SHOWER  
2ND FLOOR PLAN



OPT. EXTENDED KITCHEN



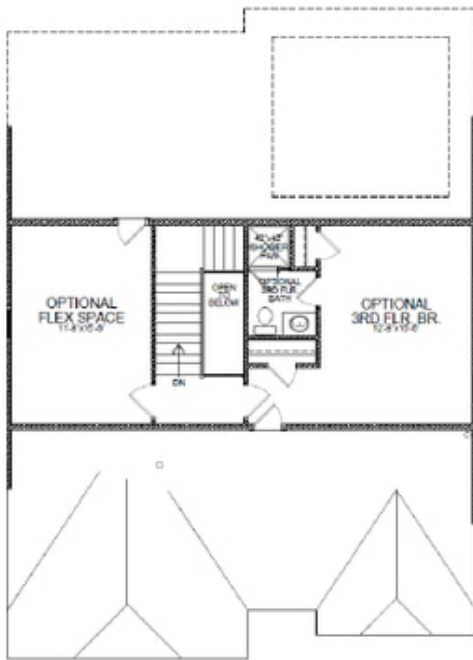
OPT. EXTENDED PORCH & AWNING



OPT. COVERED PORCH



OPT. SUNROOM & OPT. PATIO/DECK  
1ST FLOOR PLAN



OPT. THIRD FLOOR

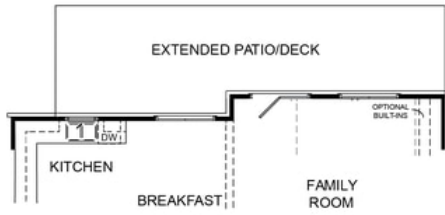
\*Third Floor NOT available on Elevations B and E

Want to Know More  
About This Home?

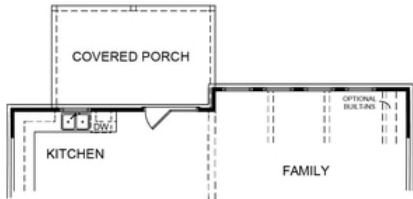
CONTACT OUR NEW HOME NAVIGATOR  
Call Us @ 470.456.9551



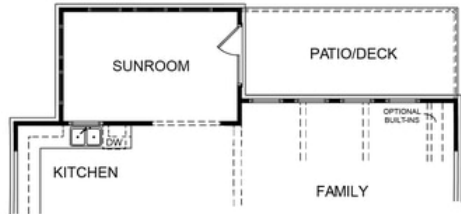
Optional Layouts



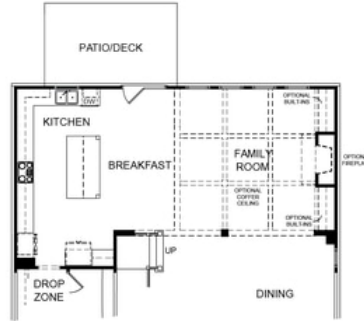
Optional Extended Patio/Deck



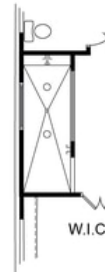
Optional Covered Porch



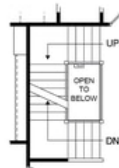
Optional Sunroom



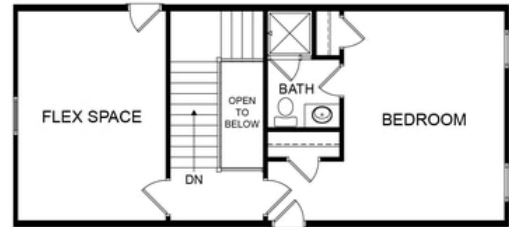
Optional Extended Kitchen



Optional Walk-In  
 Owner's Shower



Optional Stairs Layout when  
 Optional 3rd Floor is Selected



Optional 3rd Floor

Want to Know More  
 About This Home?

CONTACT OUR NEW HOME NAVIGATOR  
 Call Us @ 470.456.9551