



PRICED AT  
**\$599,300**

 **2036 Sq Ft**

 **3 Beds**

 **2.5 Baths**

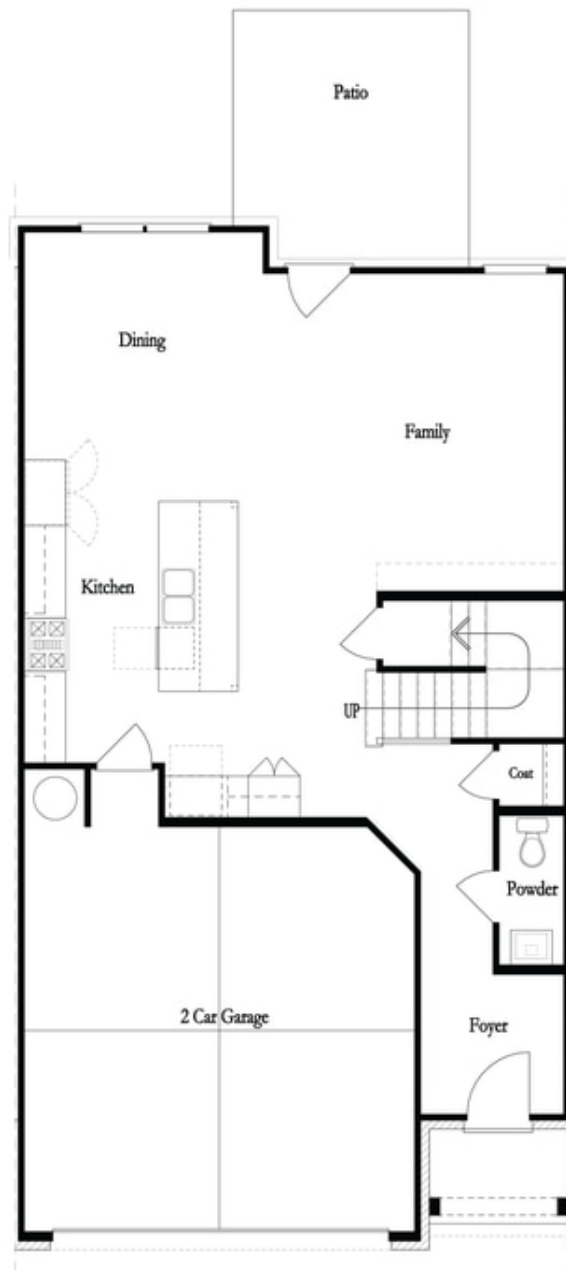
 **2 Car Garage**

 **2.0 Story**

**BE HOME FOR YOUR HOLIDAY MEMORIES! Amazing END UNIT 2 story Stockton plan with an open concept has a main level entry that leads you to a Family room, Dining room and a beautiful Kitchen. Designer finishes in the kitchen include a Large island, quartz countertops, stainless appliances and tile backsplash. The double Slider door leads to a covered patio & wooded, fully fenced backyard. When you head to the 2nd floor you will enter a spacious owner's suite & bath with dual vanities, walk-in shower with seating bench & oversized walk in closet. You will also find 2 secondary bedrooms with a shared full bath. Hard surface flooring throughout main level, stairs and upstairs hallway. Laundry room conveniently located on the upper level. This home is Under Construction with an estimated Completion December 2023 - January 2024. This community is in highly desirable location in Gwinnett County and close to 3 vibrant cities - downtown Sugar Hill, Suwanee Town Center and Buford!! Amenities include a Pool, Clubhouse, and Playground. Easy Access to interstates, shopping and restaurants. \$5,000 in closing cost incentive with the use of one of the Preferred Lenders - Ameris Bank, Capital City Home Loans, New American ...**

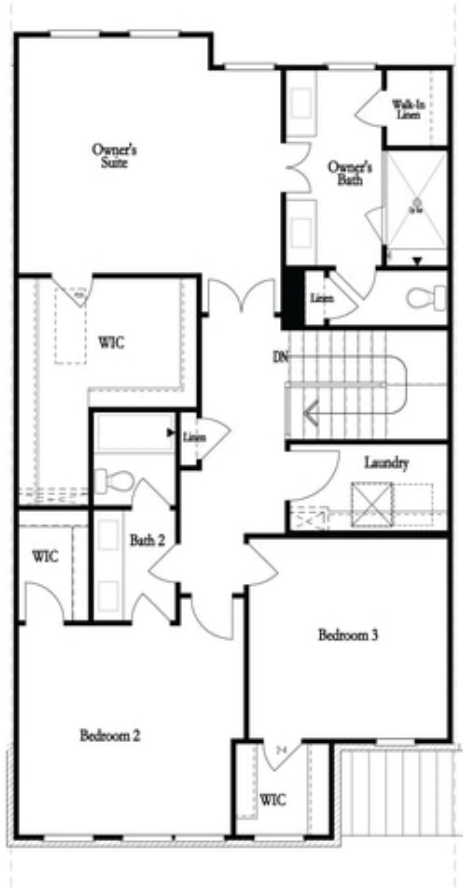
**Want to Know More  
About This Home?**

**CONTACT OUR COMMUNITY SALES MANAGER**  
**Call Us @ 470.456.9551**

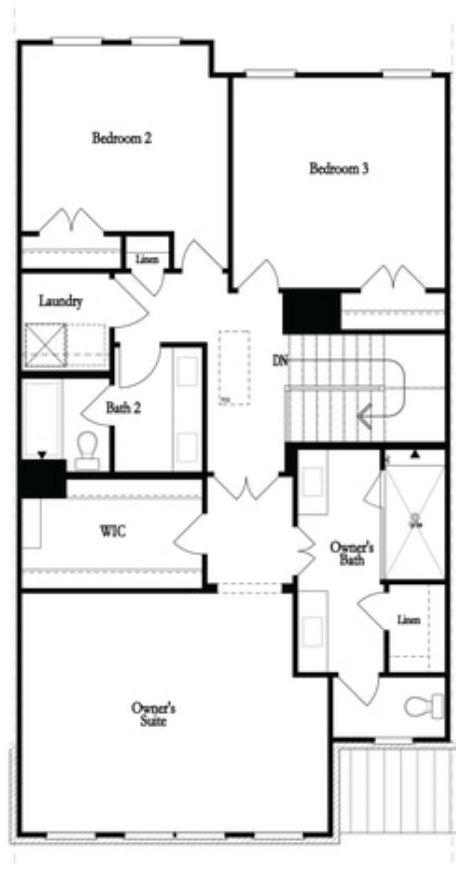


**Want to Know More  
About This Home?**

**CONTACT OUR COMMUNITY SALES MANAGER**  
**Call Us @ 470.456.9551**



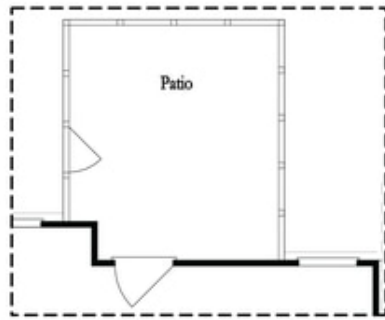
Second Floor - Owner's Rear



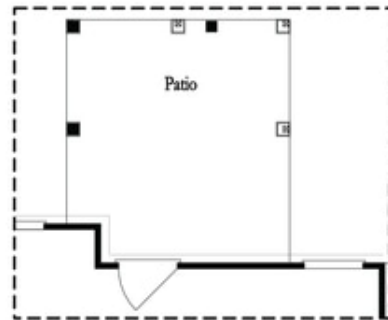
Second Floor - Owner's Front

**Want to Know More  
About This Home?**

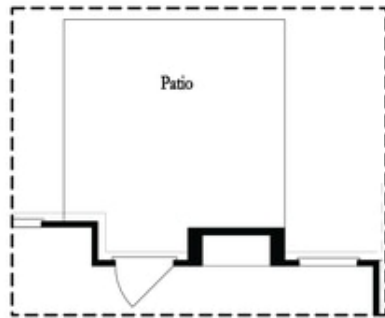
**CONTACT OUR COMMUNITY SALES MANAGER**  
**Call Us @ 470.456.9551**



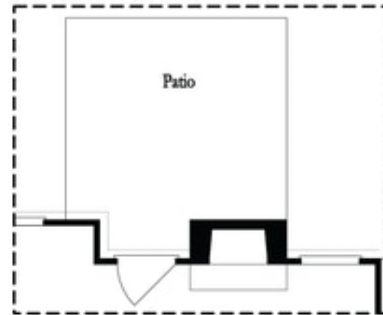
Opt. Screened Patio



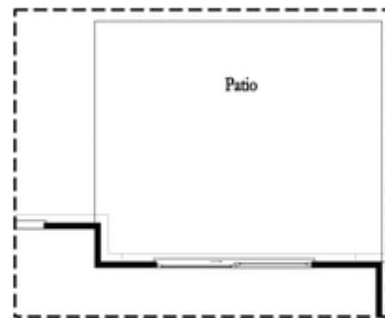
Opt. Coverd Patio



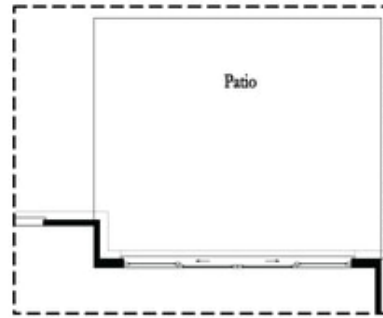
Opt. Linear Fireplace



Opt. Fireplace



Opt. 8 Foot Slider Door

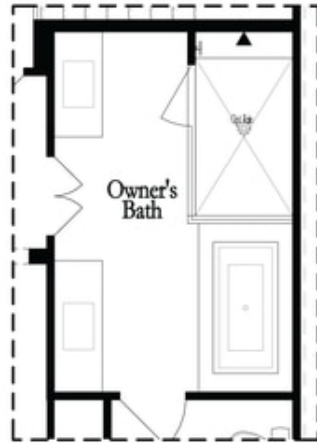


Opt. 12 Foot Slider Door

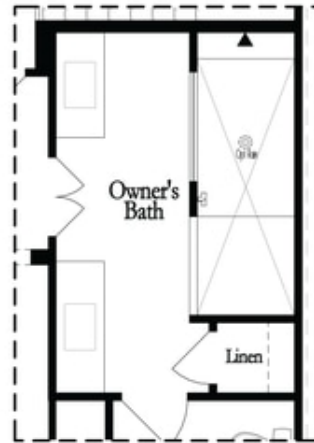
Main Level Options

**Want to Know More  
 About This Home?**

**CONTACT OUR COMMUNITY SALES MANAGER**  
**Call Us @ 470.456.9551**

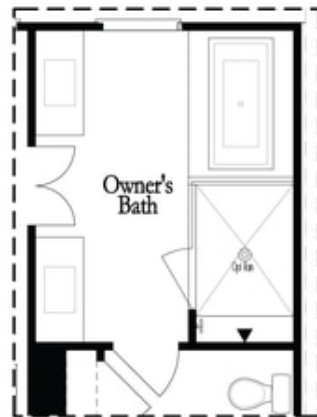


Opt. Shower/Tub

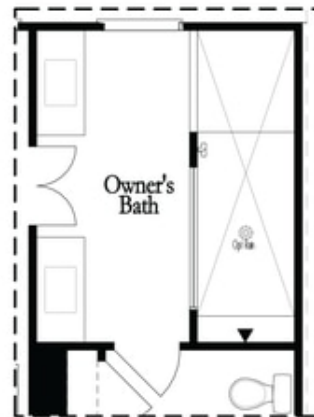


Opt. Walk-Through Shower

Owner's Front - Options



Opt. Shower/Tub



Opt. Walk-Through Shower

Owner's Rear - Options

**Want to Know More  
 About This Home?**

**CONTACT OUR COMMUNITY SALES MANAGER**  
 Call Us @ 470.456.9551