



PRICED AT
\$549,415

 2036 Sq Ft

 3 Beds

 2.5 Baths

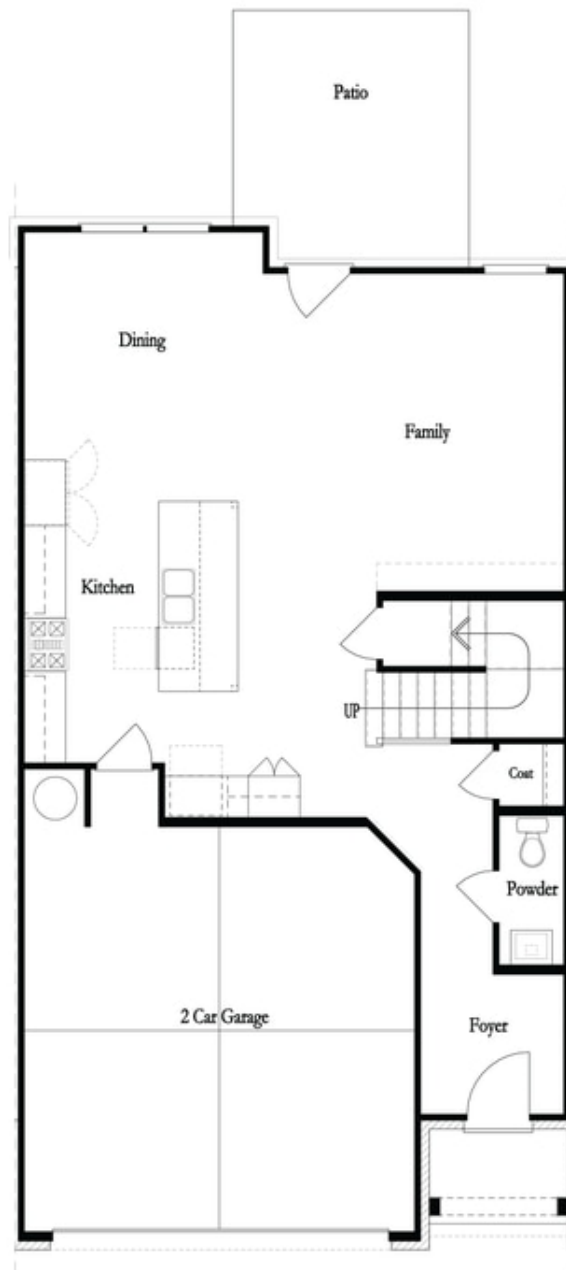
 2 Car Garage

 2.0 Story

Elevate your life in 2023! This 2 story Stockton plan with an open concept has a main level entry that leads you to a family room, dining room and a beautiful kitchen. Large island, quartz countertops, stainless appliances and tile backsplash. Covered patio leads to private wooded backyard with fully fenced backyard. When you head to the 2nd floor you will enter a spacious owner's suite & bath with dual vanities, walk-in shower, soaking tub & walk in closet. You will also find 2 secondary bedrooms with a shared full bath. Hard surface flooring throughout main level, stairs and upstairs hallway. Laundry room conveniently located on the upper level. This home is Under Construction with an estimated Completion October - November 2023. This community is in highly desirable location in Gwinnett County and close to 3 vibrant cities - downtown Sugar Hill, Suwanee Town Center and Buford!! Amenities include a Pool, Clubhouse, and Playground. Easy Access to interstates, shopping and restaurants. \$5,000 in closing cost incentive with the use of one of the Preferred Lenders - Ameris Bank, Capital City Home Loans, New American Funding and Renasant Bank. * Pictures are of a previously built home by the Providence Group, ...

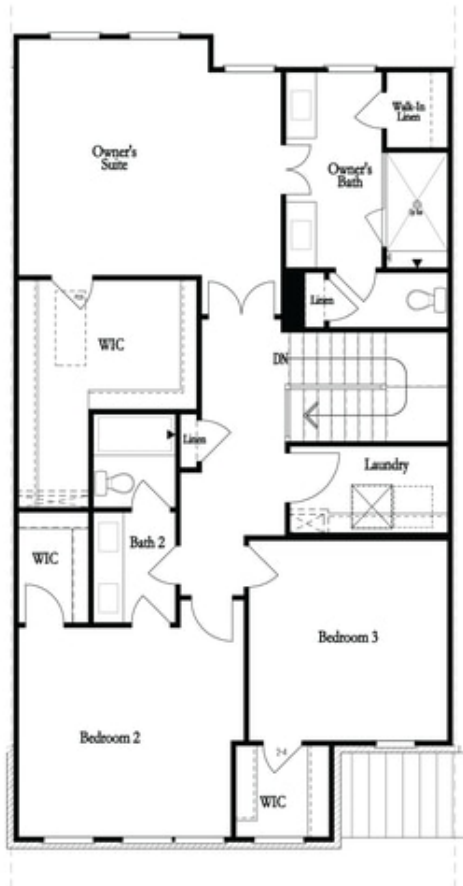
**Want to Know More
About This Home?**

CONTACT OUR COMMUNITY SALES MANAGER
Call Us @ 470.456.9551

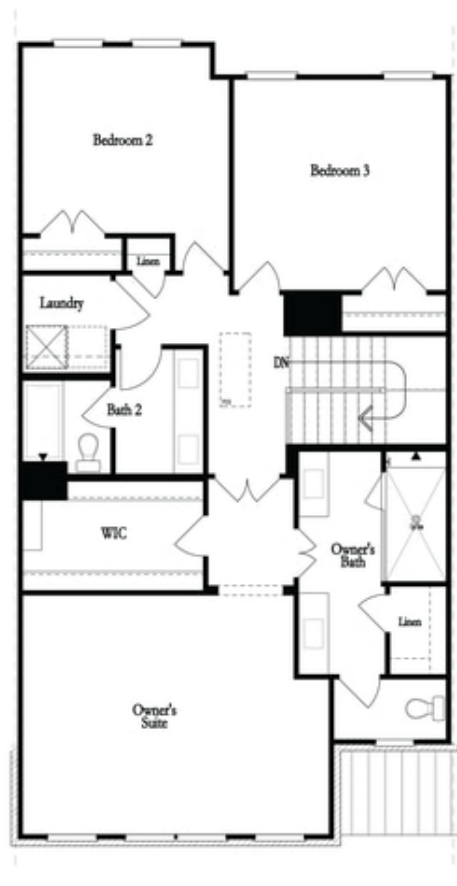


**Want to Know More
About This Home?**

CONTACT OUR COMMUNITY SALES MANAGER
Call Us @ 470.456.9551



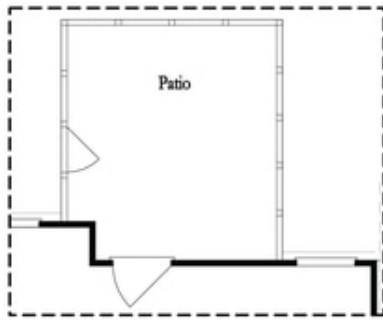
Second Floor - Owner's Rear



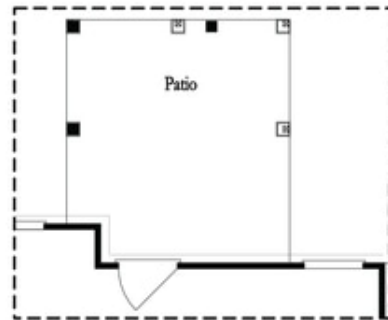
Second Floor - Owner's Front

**Want to Know More
 About This Home?**

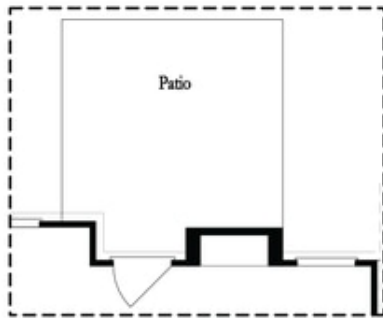
CONTACT OUR COMMUNITY SALES MANAGER
 Call Us @ 470.456.9551



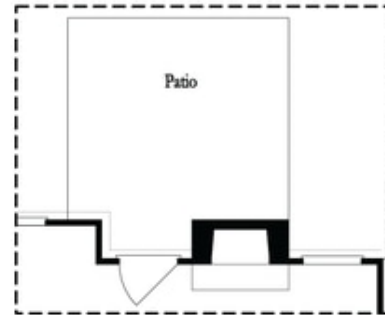
Opt. Screened Patio



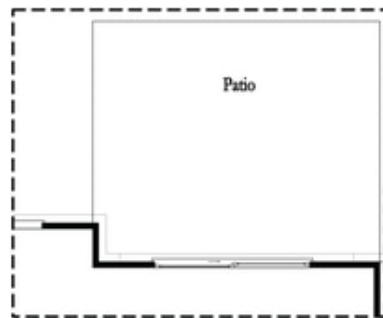
Opt. Coverd Patio



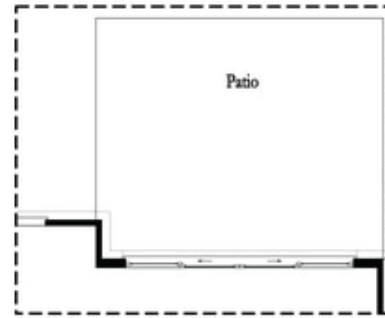
Opt. Linear Fireplace



Opt. Fireplace



Opt. 8 Foot Slider Door

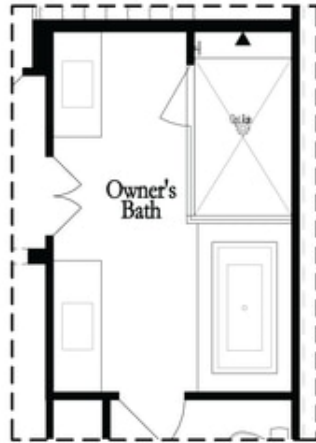


Opt. 12 Foot Slider Door

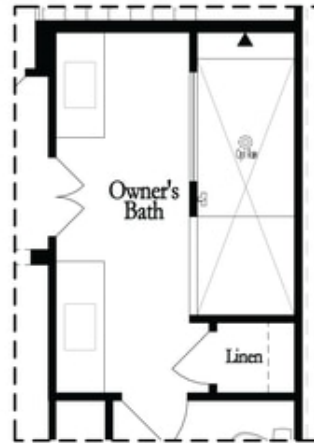
Main Level Options

**Want to Know More
 About This Home?**

CONTACT OUR COMMUNITY SALES MANAGER
 Call Us @ 470.456.9551

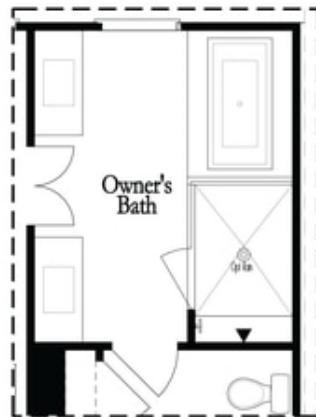


Opt. Shower/Tub

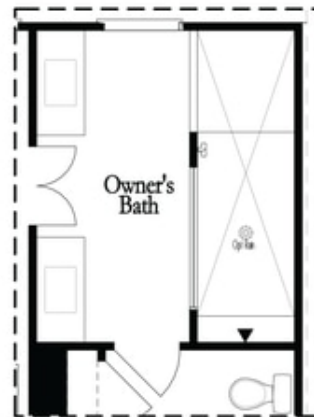


Opt. Walk-Through Shower

Owner's Front - Options



Opt. Shower/Tub



Opt. Walk-Through Shower

Owner's Rear - Options

**Want to Know More
About This Home?**

CONTACT OUR COMMUNITY SALES MANAGER
Call Us @ 470.456.9551