



PRICED AT
\$571,965

 2036 Sq Ft

 3 Beds

 2.5 Baths

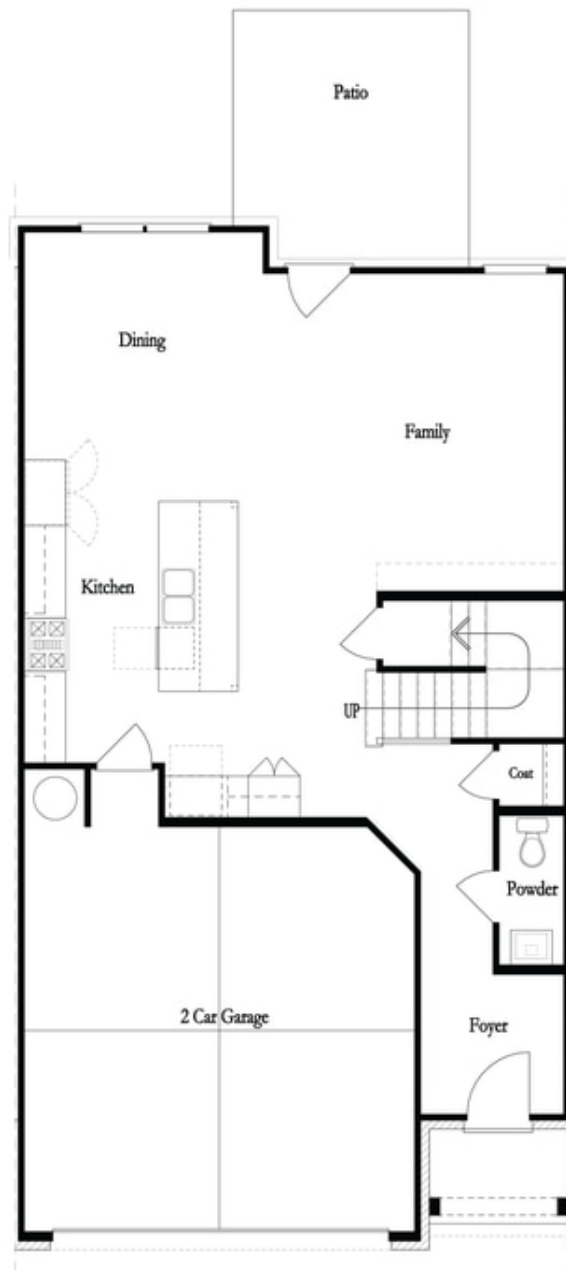
 2 Car Garage

 2.0 Story

MOVE-IN READY!!! Be home for your holiday memories & receive **INCREDIBLE NEW INCENTIVE** of \$10,000 towards closing costs/prepays when using one of our 5 preferred lenders & close in December 2023! This sought after 2 story Stockton townhome plan lives like a single family with front entry two-car garage that leads into open concept Kitchen and Family Room with a cozy Gas Fireplace. Light filled Kitchen with an abundance of cabinets, oversized Kitchen Island with quartz counters, Stainless Steel Appliances, Soft Close Cabinet Doors, under cabinet lighting and gleaming hard surface floors. Open concept Family Room leading to private wooded fully fenced backyard with **COVERED PATIO** for easy outdoor entertaining and HOA maintained lawn. When you head to the 2nd floor you will enter a spacious Owner's suite with oversized Walk-in Closet and Owner's Bath featuring separate vanities, Walk-in Shower & two linen closets. Additionally, you will find two secondary Bedrooms with shared Full Bath and dual vanity. Laundry Room is conveniently located on the same level as bedrooms. Hard surface flooring throughout main level, stairs and upstairs hallway. Ellington is conveniently situated in desirable Gwinnett County with close proximity to Schools, Parks, Shopping, Dining and 4 vibrant cities - ...

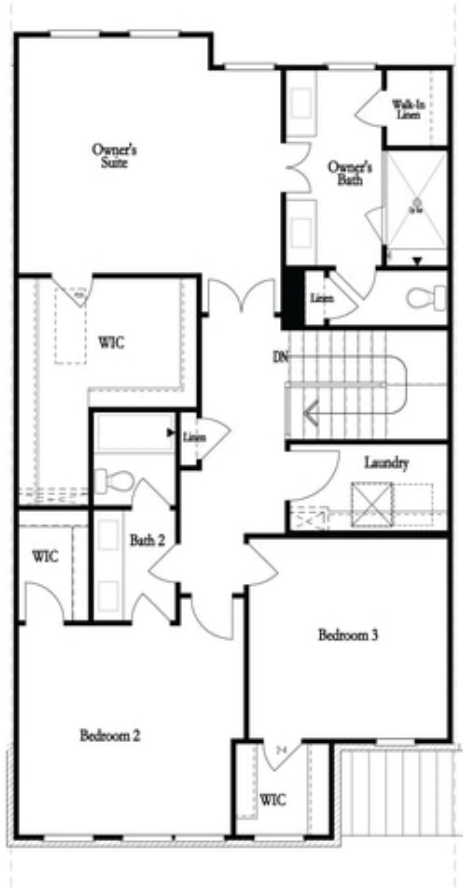
**Want to Know More
About This Home?**

CONTACT OUR COMMUNITY SALES MANAGER
Call Us @ 470.456.9551

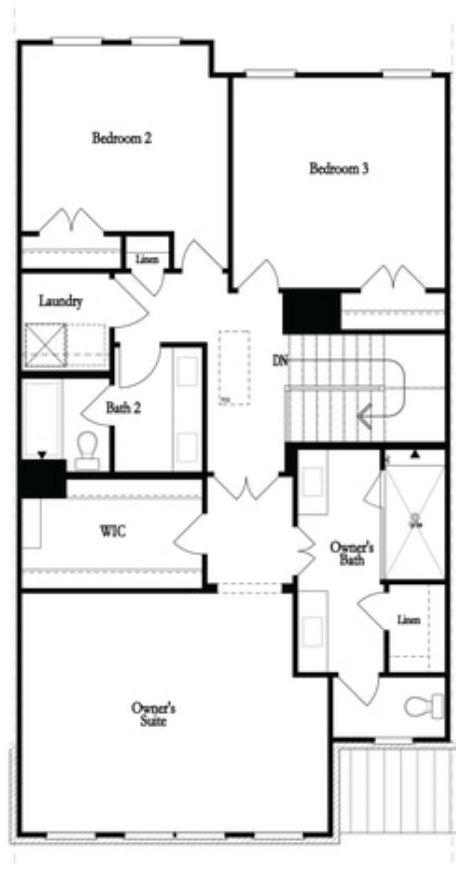


**Want to Know More
About This Home?**

CONTACT OUR COMMUNITY SALES MANAGER
Call Us @ 470.456.9551



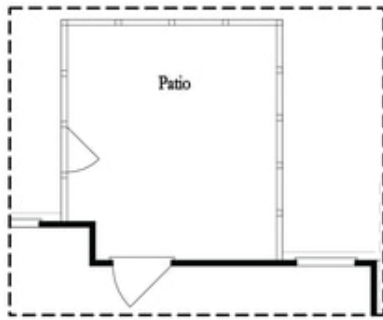
Second Floor - Owner's Rear



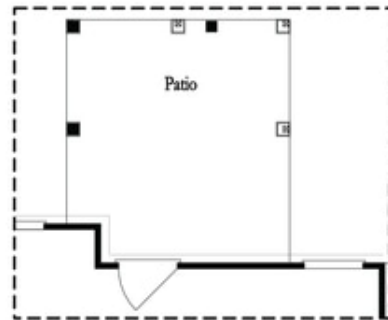
Second Floor - Owner's Front

**Want to Know More
About This Home?**

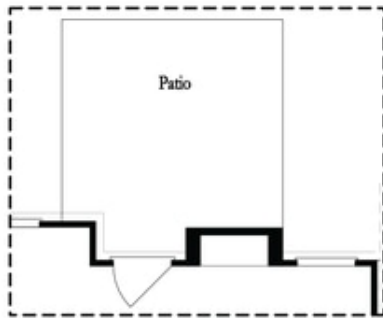
CONTACT OUR COMMUNITY SALES MANAGER
Call Us @ 470.456.9551



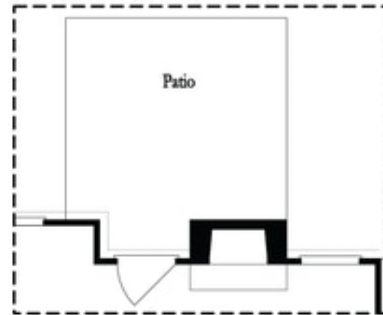
Opt. Screened Patio



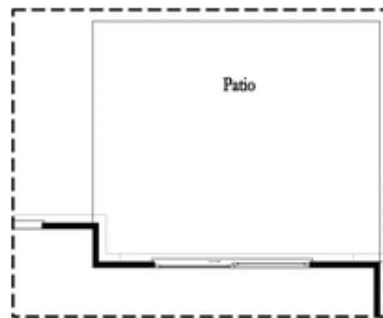
Opt. Coverd Patio



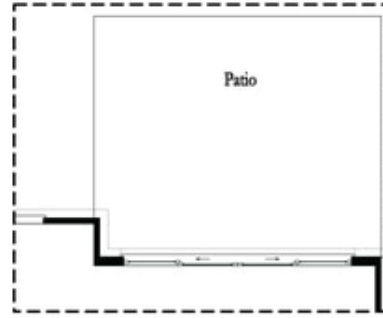
Opt. Linear Fireplace



Opt. Fireplace



Opt. 8 Foot Slider Door

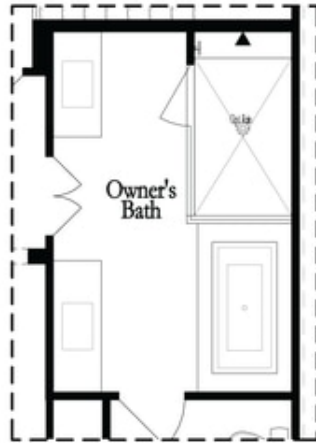


Opt. 12 Foot Slider Door

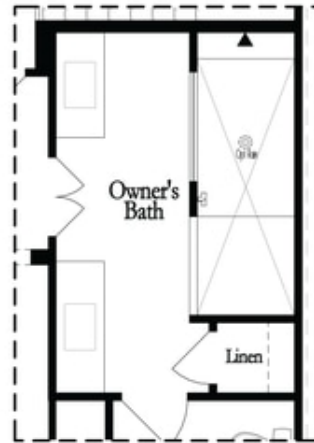
Main Level Options

**Want to Know More
About This Home?**

CONTACT OUR COMMUNITY SALES MANAGER
Call Us @ 470.456.9551

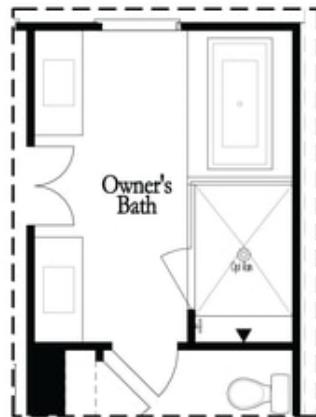


Opt. Shower/Tub

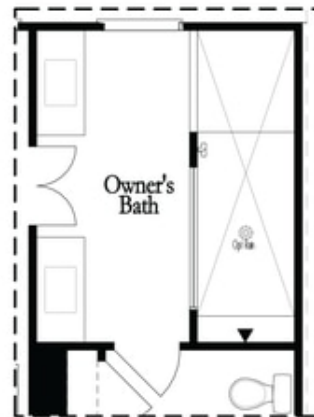


Opt. Walk-Through Shower

Owner's Front - Options



Opt. Shower/Tub



Opt. Walk-Through Shower

Owner's Rear - Options

**Want to Know More
About This Home?**

CONTACT OUR COMMUNITY SALES MANAGER
Call Us @ 470.456.9551