








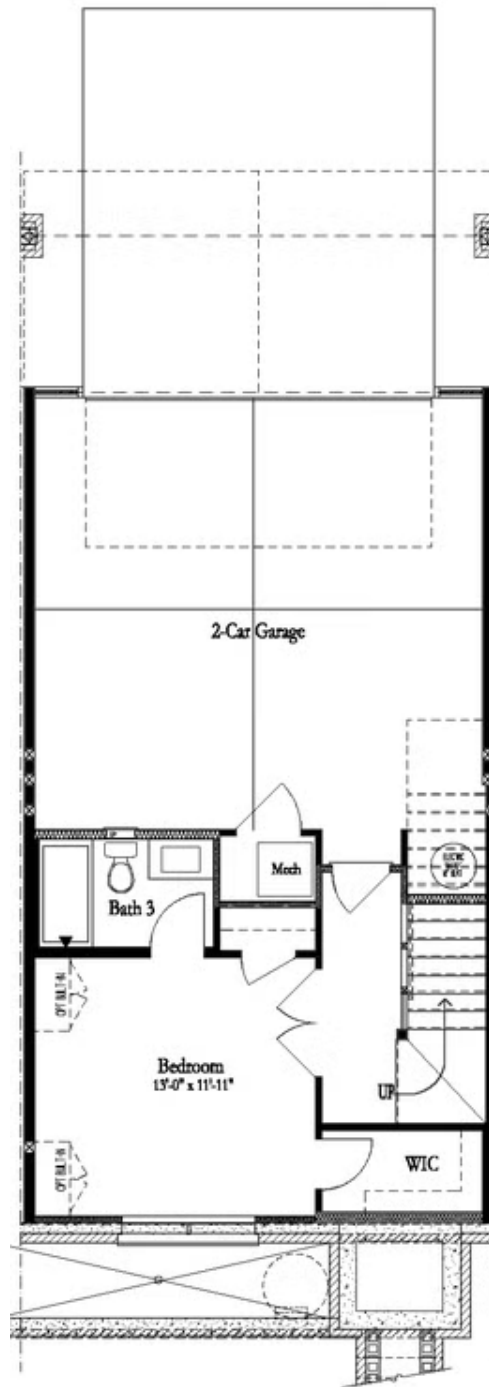
PRICED AT
\$518,350

-  2186 Sq Ft
-  3 Beds
-  3.5 Baths
-  2 Car Garage
-  3.0 Story

"New Year, New Home, New You!" Move-in Ready! Stunning 'Graham' townhome by The Providence Group. Sun-drenched main level's open plan has impressive chef's kitchen featuring beautiful 42" cabinets, stainless steel appliances including range hood, huge island with plenty of seating & quartz counters with views to spacious family room with beautiful fireplace. Hard surface floors throughout main living area. Worried about spending thousands in upgrades? Not here! Enjoy easy access from the sunroom to the main level deck perfect for morning coffee or evening cocktails. The upper level which features 2 bedrooms including the owner suite with spa like bath with dual vanities, large shower, soaking tub and spacious walk-in closet. Terrace level entry has flex space perfect for convenient office or 3rd bedroom with full bath. Neutral paint colors throughout paired with crisp white trim & finishes every buyer is looking for. This designer residence has splendid details on each level. Thoughtfully planned for today's lifestyle, enjoy the ease and convenience of luxury living within walking distance to Suwanee Town Center, walking trails and Parks. Swim community with large beautiful pool. "Elevate your life in 2024 with a new townhome." PHOTOS ARE NOT OF ACTUAL HOME. Move-In Ready! Final ...

**Want to Know More
About This Home?**

CONTACT OUR COMMUNITY SALES MANAGER
NONE
Call Us @ (678) 332-7300

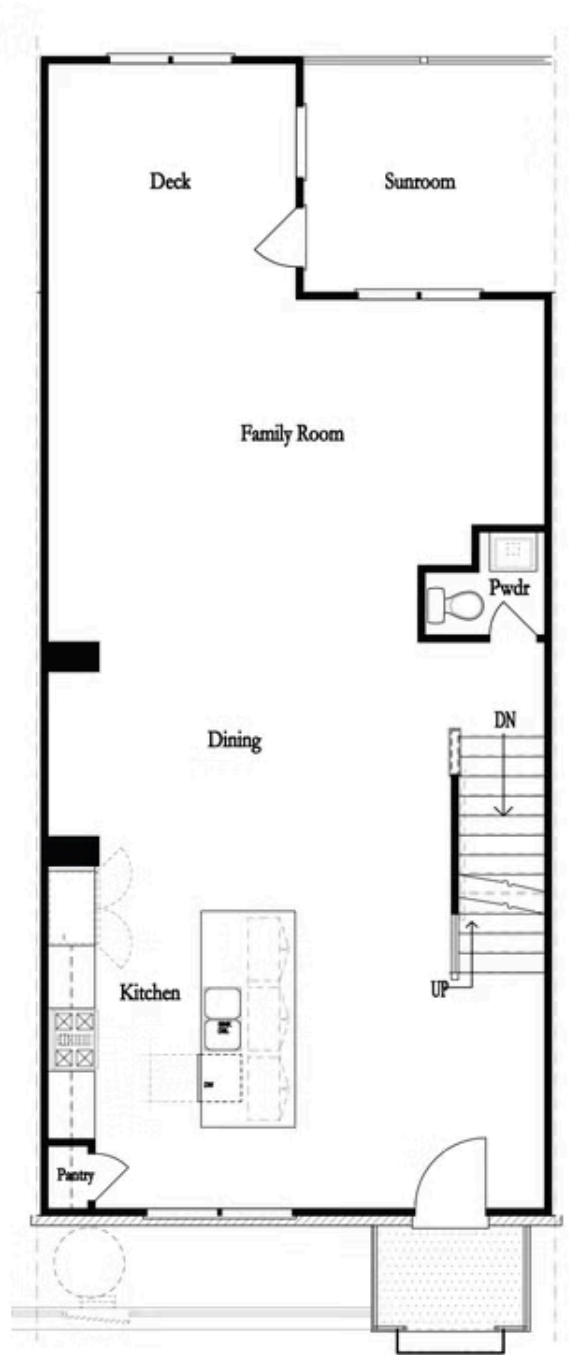


Want to Know More
About This Home?

CONTACT OUR COMMUNITY SALES MANAGER

NONE

Call Us @ (678) 332-7300

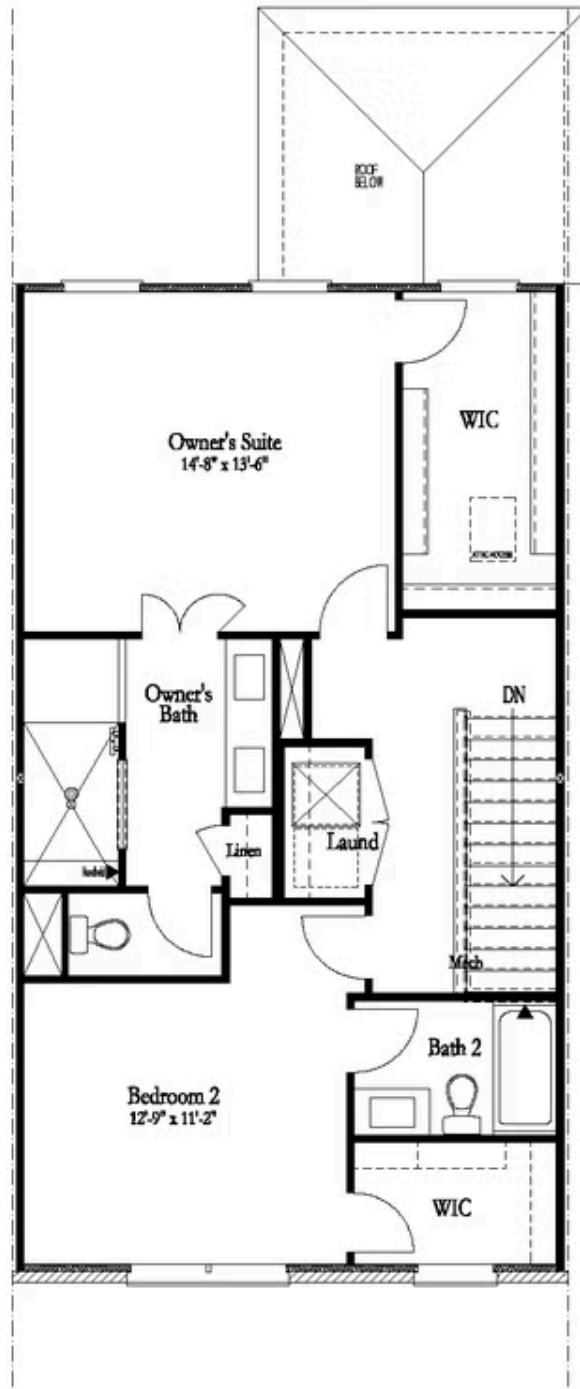


Want to Know More
About This Home?

CONTACT OUR COMMUNITY SALES MANAGER

NONE

Call Us @ (678) 332-7300



Want to Know More
About This Home?

CONTACT OUR COMMUNITY SALES MANAGER

NONE

Call Us @ (678) 332-7300