



PRICED AT  
**\$499,650**

 2186 Sq Ft

 3 Beds

 3.5 Baths

 2 Car Garage

 3.0 Story

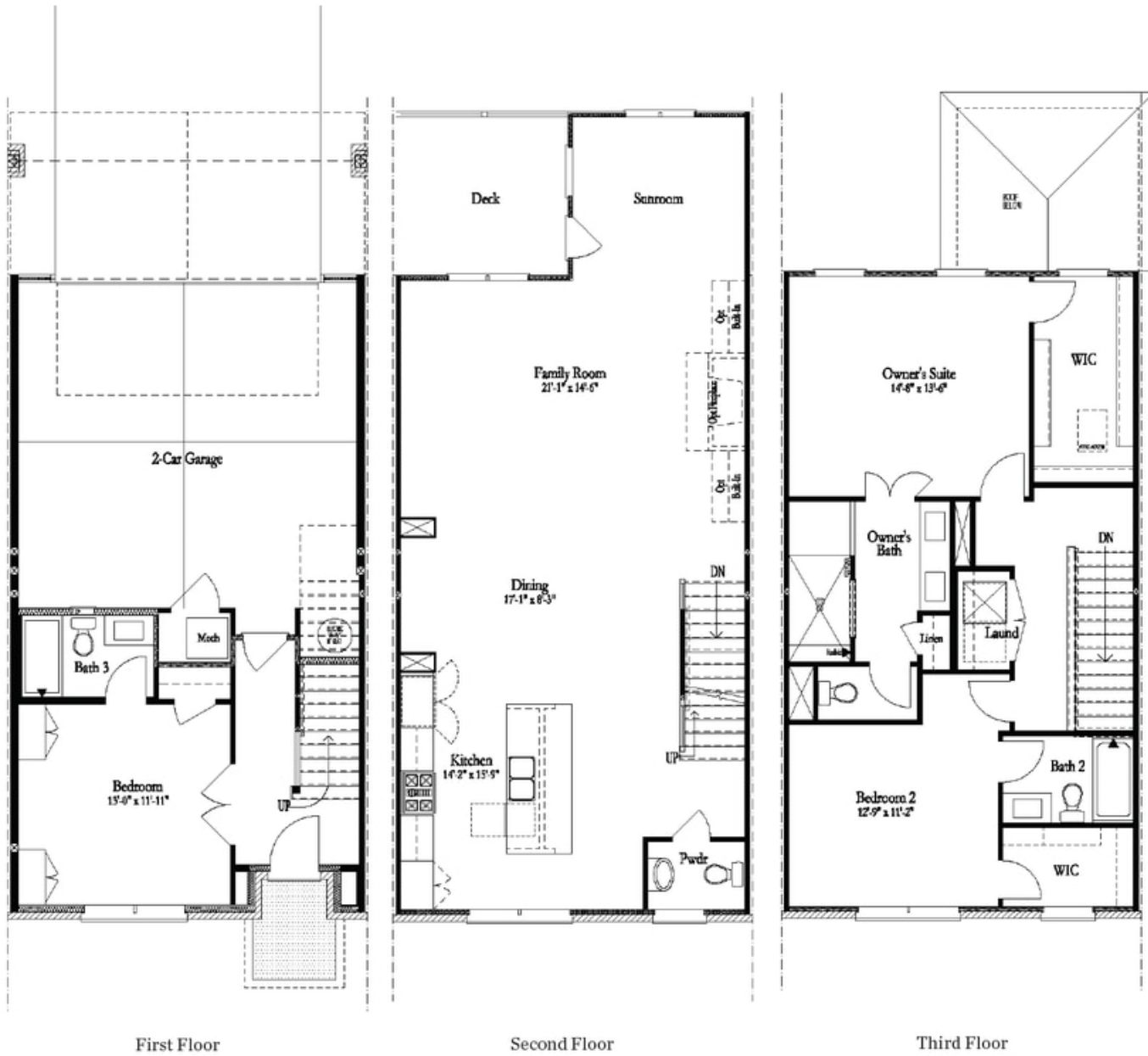
**ELEVATE YOUR LIFE IN 2023! New Year New Price PLUS \$20K Any Way You Want on contract written before January 31, 2023 and closing by March 31, 2023! A 3- story spacious townhome in Farmhouse style community. This open floorplan allows for tons of light and easy entertaining spaces. The family room has a fireplace and offers views to the dining room and the beautifully designed kitchen. The kitchen with oversized island features quartz countertops, tile backsplash and stainless appliances. The sizable sunroom is a nice space to relax or could be a great home office and the rear deck is a great spot for outdoor entertaining. The owners bath has a large shower with drying area & beautiful ceramic tiling. Plenty room for all your clothes in the large walk-in closet. Owner's suite, laundry, and second bedroom with en suite are all located on upper floor. The terrace level has the third bedroom with private bath. Swim community. Finest Gwinnett County schools. Estimated closing time frame: Feb/Mar 2023. PHOTOS AND VIRTUAL TOUR ARE NOT OF ACTUAL HOME. Harvest Park is 1 mile to Suwanee Town Center Park close to the Greenway, restaurants, and so much more. Walk to Suwanee ...**

**Want to Know More  
About This Home?**

CONTACT OUR COMMUNITY SALES MANAGER

**NONE**

Call Us @ (678) 332-7300



**Want to Know More  
About This Home?**

CONTACT OUR COMMUNITY SALES MANAGER

**NONE**

Call Us @ (678) 332-7300