



PRICED AT
\$490,650

 2186 Sq Ft

 3 Beds

 3.5 Baths

 2 Car Garage

 3.0 Story

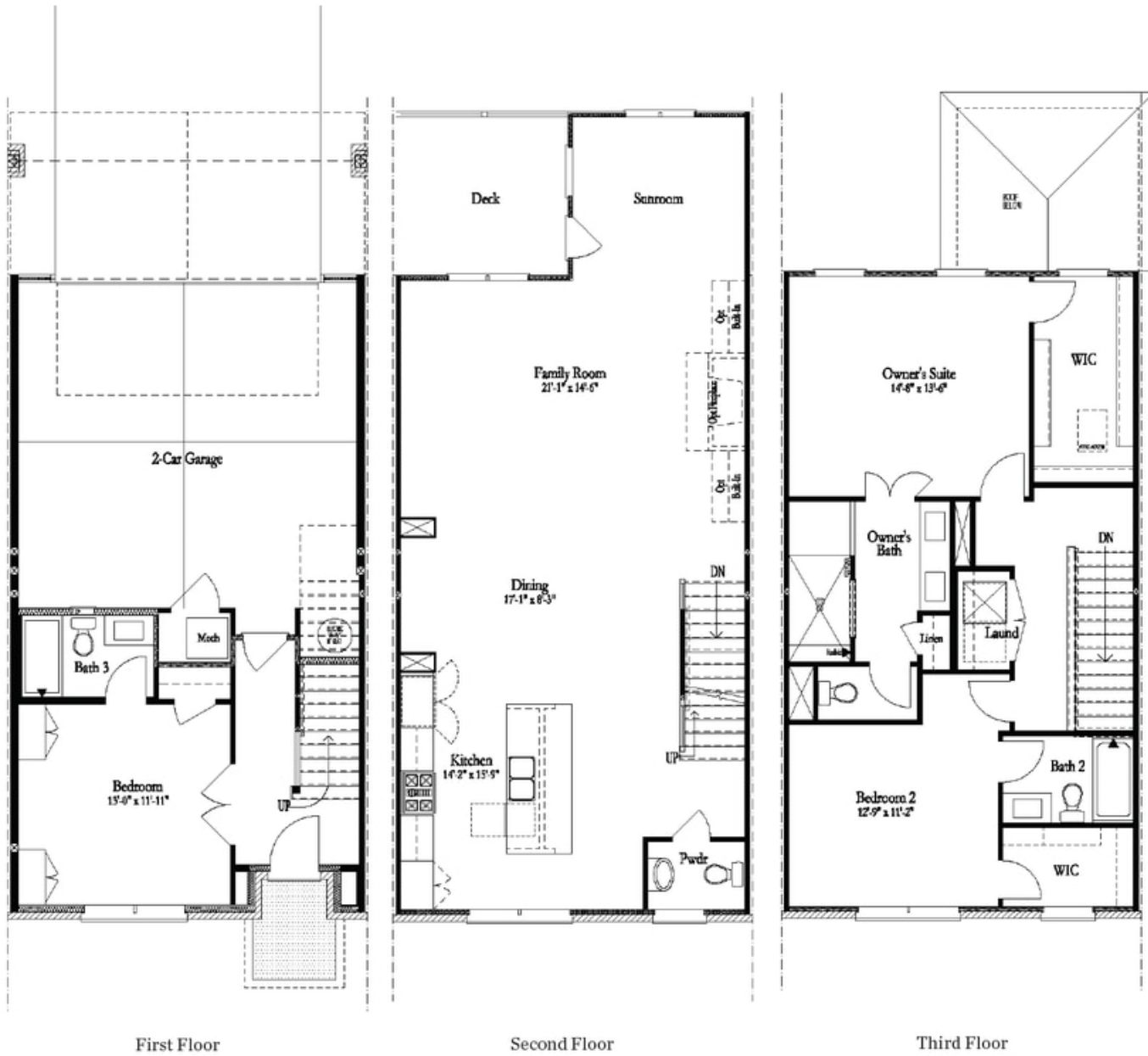
ELEVATE YOUR LIFE IN 2023! New Year New Price PLUS \$20K Any Way You Want on contract written before January 31, 2023 and closing by March 31, 2023! Luxury living without a luxury price! Does that sound appealing? Then come check out our Grayson, farmhouse style townhome. Harvest Park is a gorgeous community of single-family homes and townhomes. Your HOA covers the lawn maintenance, so you have more time to visit Suwanee Towne Center just 1 mile from the community. Shops, restaurants, music festivals and the farmers market are just outside your door! Are you looking for walking or biking trails? Visit the Suwanee Greenway located just around the corner. In this 3-story home you will find the owners suite with large walk-in closet and master bath, the secondary bedroom with private bath and convenient laundry all on upper floor. Your main living space is well appointed and open with kitchen island, tile backsplash and stainless appliances. Enjoy the fireplace, read a book in the sunroom. The outside deck is perfect for entertaining. Located on the terrace level you have a third bedroom, or maybe home office with full bathroom. Swim community. Best North Gwinnett schools. White Street park just ...

**Want to Know More
About This Home?**

CONTACT OUR COMMUNITY SALES MANAGER

NONE

Call Us @ (678) 332-7300



**Want to Know More
About This Home?**

CONTACT OUR COMMUNITY SALES MANAGER

NONE

Call Us @ (678) 332-7300