



PRICED AT
\$504,650

 2186 Sq Ft

 3 Beds

 3.5 Baths

 2 Car Garage

 3.0 Story

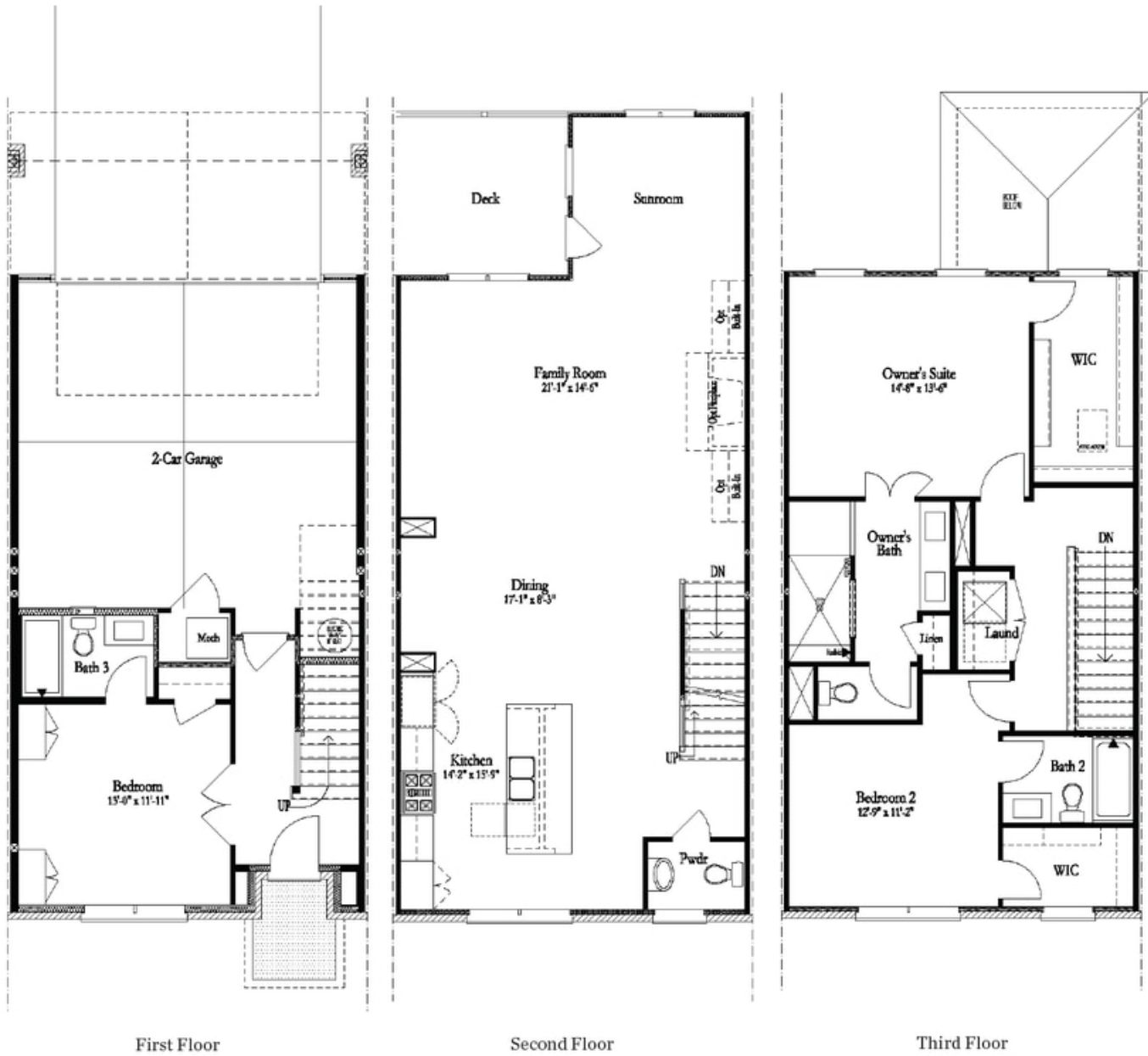
Happy Holidays! OUR COMMUNITY WILL BE CLOSED Dec. 23rd- Jan 3rd so our team can spend time with their families. We will be available Jan 3rd, 2023. Have you been looking for a Townhome in a fantastic location with little maintenance??? Come fall in love with the Grayson floorplan!! Located here in Harvest Park in the heart of Suwanee, Georgia. Enjoy your surroundings without worrying about the lawn!! This 3 bedroom, 3.5 bath townhome has everything you've been looking for! Are you looking for the convenience of restaurants, parks, walking trails, and numerous shops just outside your door?? Come see this home! Tons of light spill into the home from the abundance of windows. The open concept allows plenty of space for entertaining! The kitchen has oversized island with quartz countertops, stainless appliances and tile backsplash. The owners suite boasts a large walk in closet, spa like bath has a large glass enclosed shower and separate tub. The secondary bedroom has it's own private bath and laundry is located upstairs for easy access. The third bedroom is located on terrace level and has full bathroom! White Street Park is across from the community with walking trails and communal gardens for ...

**Want to Know More
About This Home?**

CONTACT OUR COMMUNITY SALES MANAGER

NONE

Call Us @ (678) 332-7300



**Want to Know More
About This Home?**

CONTACT OUR COMMUNITY SALES MANAGER

NONE

Call Us @ (678) 332-7300