








PRICED AT
\$525,650

-  2186 Sq Ft
-  3 Beds
-  3.5 Baths
-  2 Car Garage
-  3.0 Story

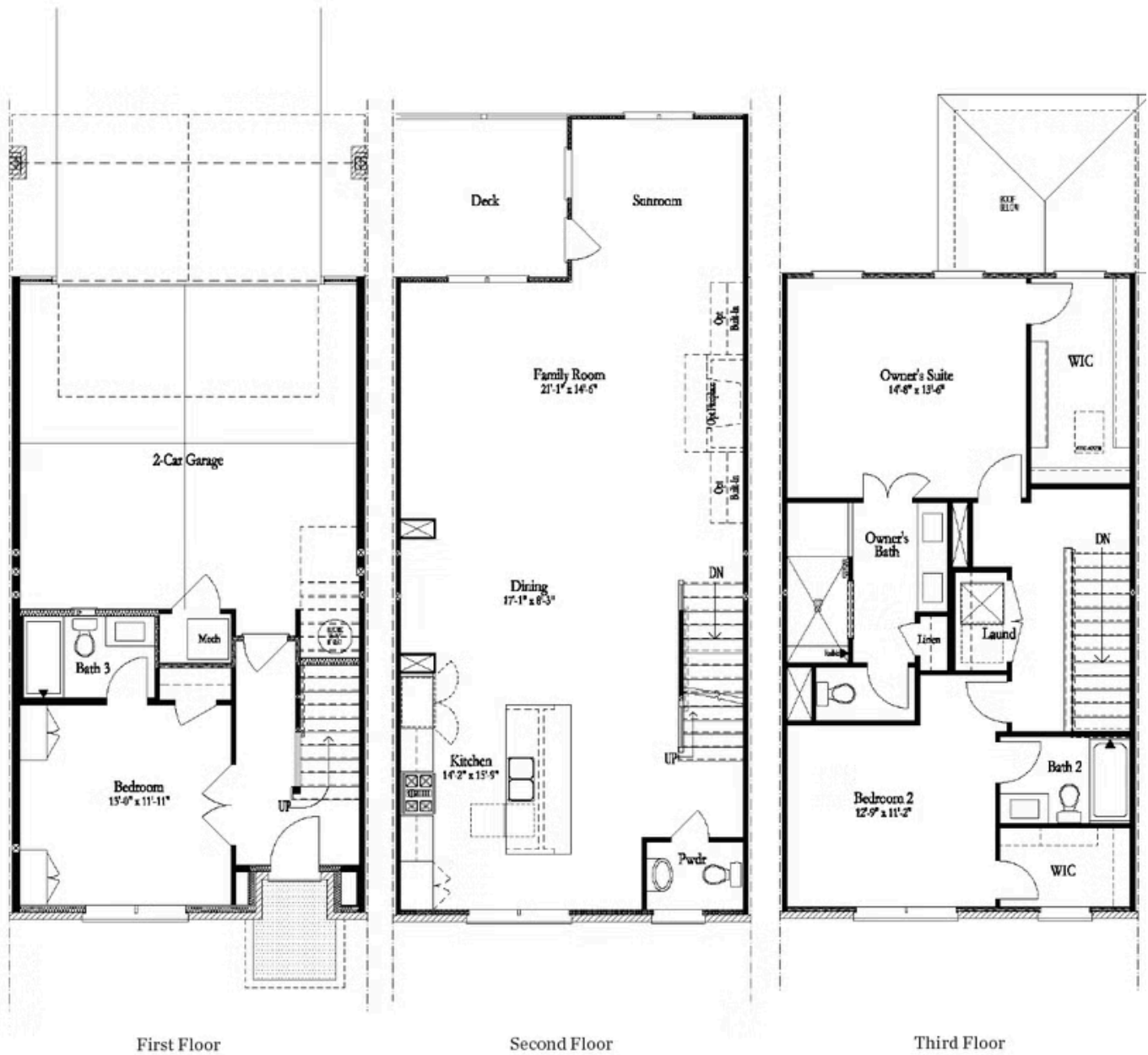
Ask About our Fabulous Fall Incentives Must see this three story end unit townhome by The Providence Group. Farmhouse style with open and spacious design. Light and bright gourmet kitchen with quartz countertops, tile backsplash, and HUGE island. Kitchen opens to dining room, family room & sunroom making it easy to entertain. Sunroom is a great extra space for a home office area or a peaceful area to just lounge and read a book. Rear deck perfect for early morning coffee or late night glass of wine. All bedrooms have their own private bathrooms. Spa like owner's bath has a large shower and separate tub. Laundry is located upstairs near bedrooms for convenience. Harvest Park is located just 1 mile from Suwanee Towne Center...easy walk to all the restaurants, shops and parks! Best North Gwinnett schools. Suwanee greenway just around the corner. Estimated closing time frame: January/February 2023. PHOTOS AND VIRTUAL TOUR ARE NOT OF ACTUAL HOME, FOR REPRESENTATION PURPOSES ONLY.

Want to Know More
About This Home?

CONTACT OUR COMMUNITY SALES MANAGER

NONE

Call Us @ (678) 332-7300



Want to Know More
About This Home?

CONTACT OUR COMMUNITY SALES MANAGER

NONE

Call Us @ (678) 332-7300