



PRICED AT
\$854,900

 3576 Sq Ft

 4 Beds

 3.0 Baths

 2 Car Garage

 2.0 Story

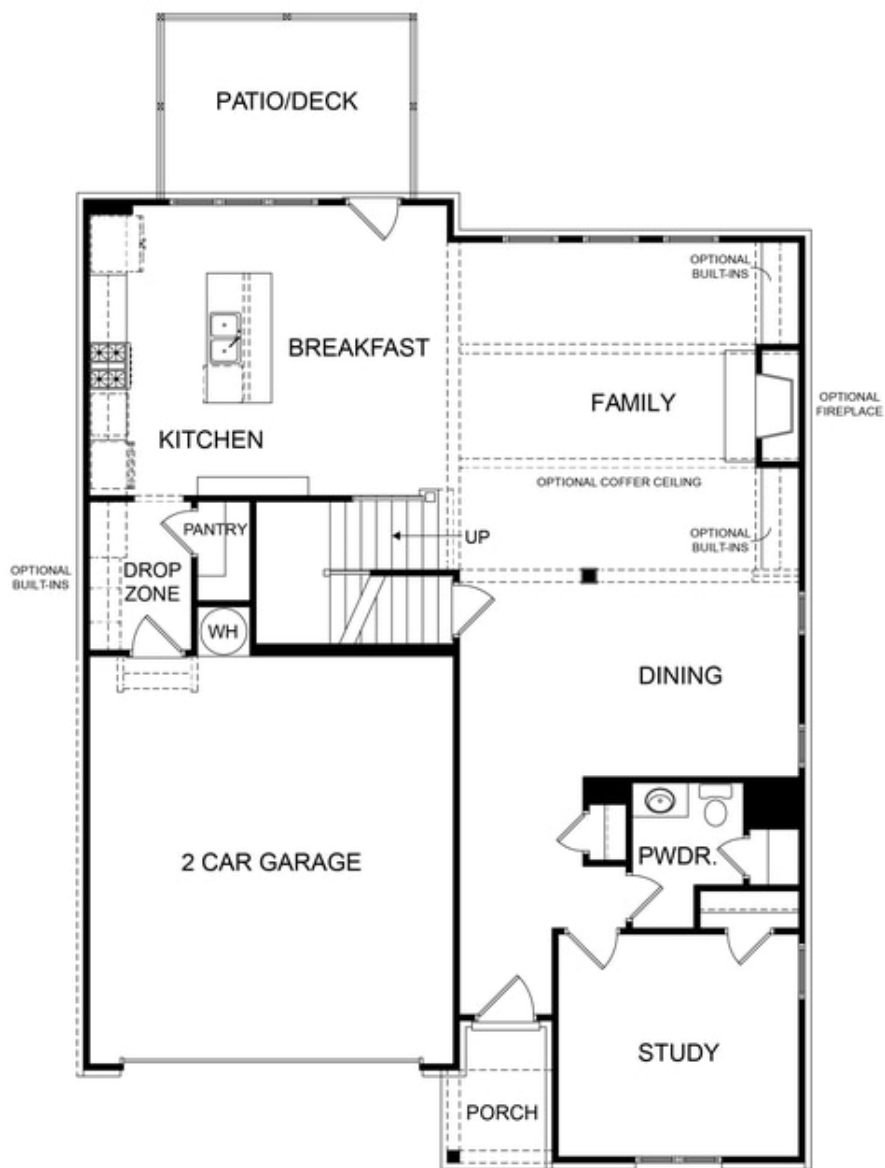
Beautiful white-painted modern farmhouse-style home offering luxurious living with details every buyer desires. Everything you wanted in a home. Still time to visit our fabulous Design Studio to make your interior selections, but time is of the essence. Open floor plan featuring 10 ft. ceilings. Impressive designer kitchen with a clear view of the family room. Oversized island with quartz countertops that has plenty of seating for chatting with guests as the chef cooks in the fabulous gourmet kitchen. The sunroom offers added space when entertaining. Featuring a guest suite on the main floor which could also make a convenient home office. Plenty of sizable storage in the unfinished basement also is perfect for one or two more future bedrooms. The second floor offers a large owner's retreat with a sitting room and an amazing bath with separate vanities, and deluxe walk-in shower. Between the owners room and the other bedrooms is a roomy retreat area for playroom/media room. Two spacious secondary bedrooms with jack & jill bath finish out the second floor. HOA maintained homesites. Estimated closing time frame is September/October 2023. Walking distance to Suwanee Town Center, the Greenway trails, restaurants, shops, and so much more. Top North ...

**Want to Know More
About This Home?**

CONTACT OUR NEW HOME NAVIGATOR

NONE

Call Us @ (678) 332-7300

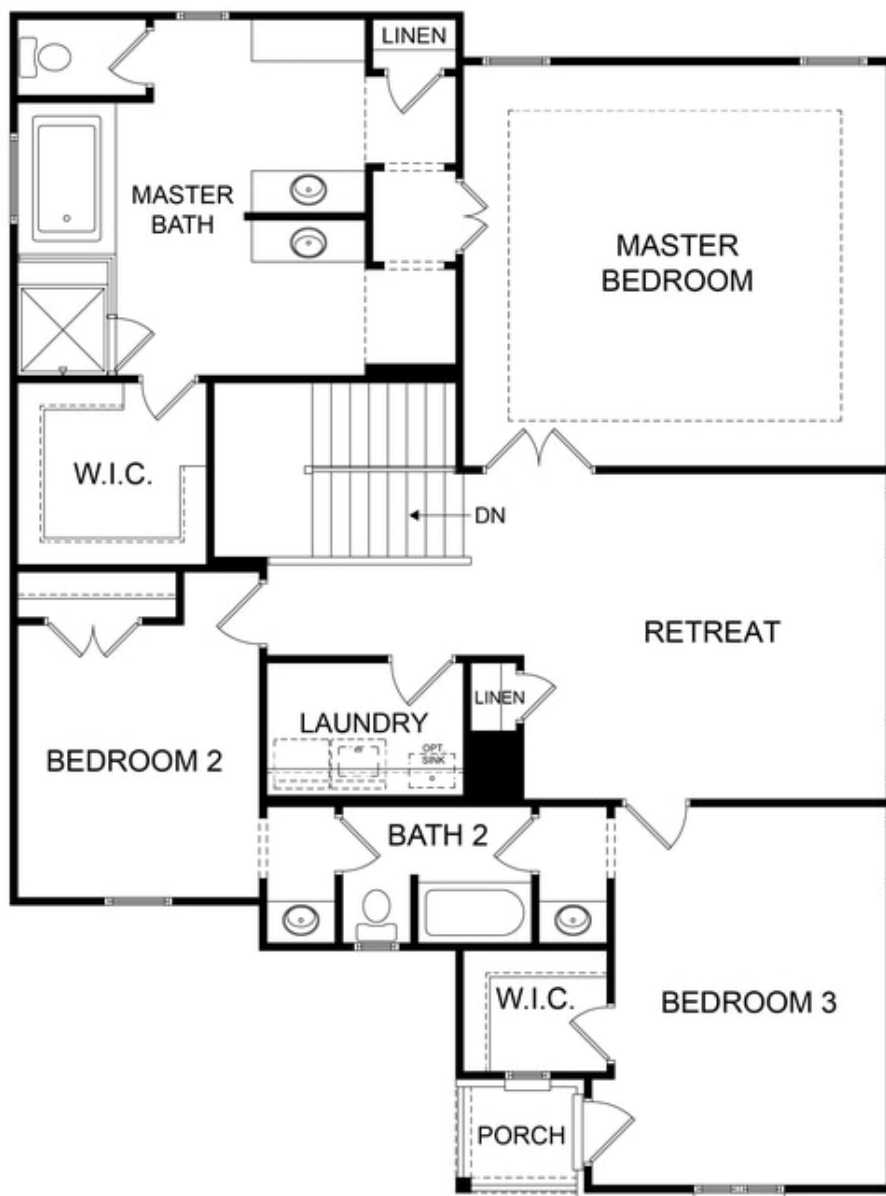


**Want to Know More
About This Home?**

CONTACT OUR NEW HOME NAVIGATOR

NONE

Call Us @ (678) 332-7300

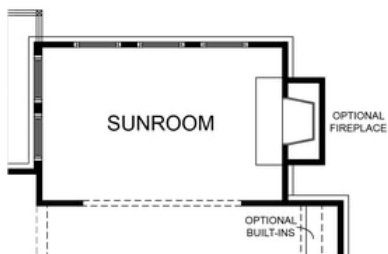


Want to Know More
About This Home?

CONTACT OUR NEW HOME NAVIGATOR

NONE

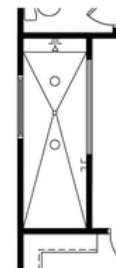
Call Us @ (678) 332-7300



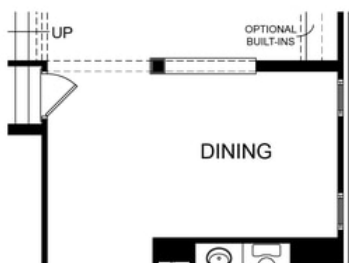
OPT. SUNROOM



OPT. SITTING ROOM



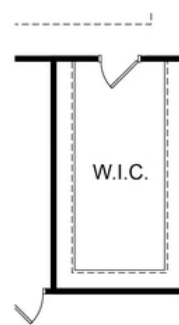
OPT. WALK-IN SHOWER



OPT. DIVISION WALL FOR DINING



OPT. BEDROOM WITH BATH ILO STUDY



OPT. ADDITIONAL
WALK-IN CLOSET

Want to Know More
About This Home?

CONTACT OUR NEW HOME NAVIGATOR

NONE

Call Us @ (678) 332-7300