



PRICED AT  
**\$839,860**

 3203 Sq Ft

 4 Beds

 3.0 Baths

 2 Car Garage

 2.0 Story

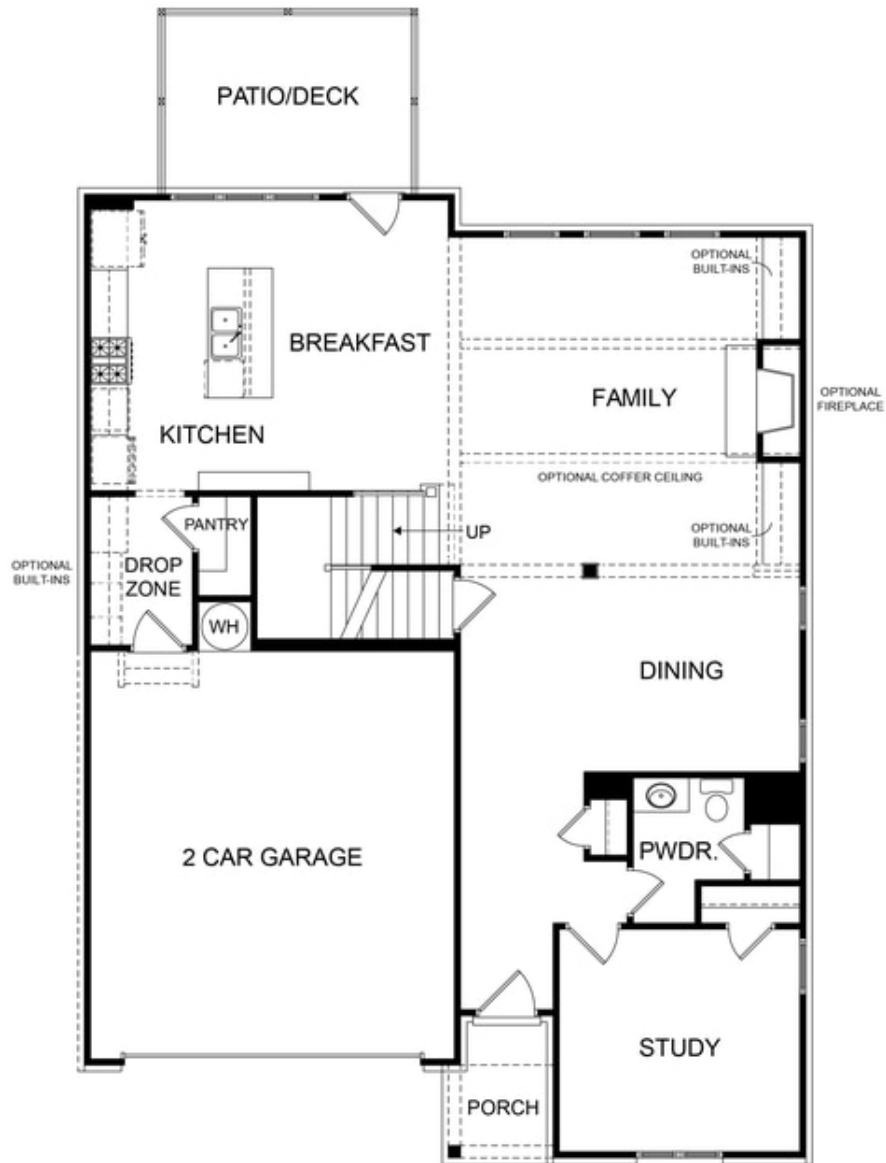
**ELEVATE YOUR LIFE IN 2023!** This beautiful Mansfield plan will have curb appeal galore on HPK 61 with a view of hardwood trees from your expansive deck. This farmhouse style home is gorgeous. Foyer entrance with 10' ceilings on the main floor with large windows throughout make the view absolutely stunning. Nothing but woods behind you for a private feeling. Front entry garage on Unfinished Basement. From the garage, enter through the Drop Zone which is the perfect spot for shoes and purses. The large eat in kitchen has tons of cabinet space, GE kitchen appliances and an island that overlooks the breakfast area. The family room boasts so much light and has a dining space open to the rest of the home. Guest retreat with full bath also located on main floor. This home is **TO BE BUILT**, which means **YOU** get to design the interior at our gorgeous Design Center. Upstairs you will find upgrades galore! The Primary suite has 2 massive walk-in closets while the bath offers a soaking tub, separate shower and the large his and her vanities make this bathroom the perfect spa space. Two additional bedrooms with a jack and jill bathroom set up. ...

**Want to Know More  
About This Home?**

CONTACT OUR COMMUNITY SALES MANAGER

**NONE**

Call Us @ (678) 332-7300

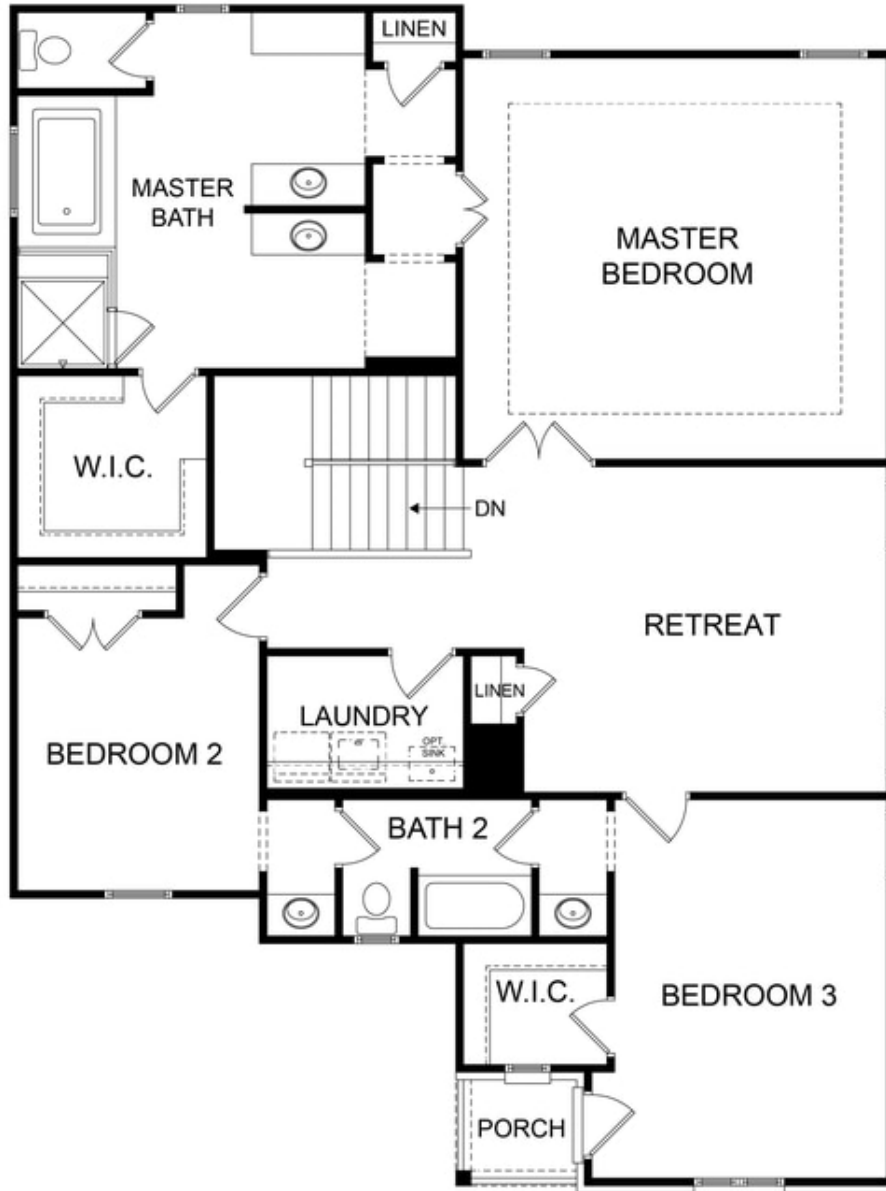


**Want to Know More  
About This Home?**

CONTACT OUR COMMUNITY SALES MANAGER

**NONE**

Call Us @ (678) 332-7300

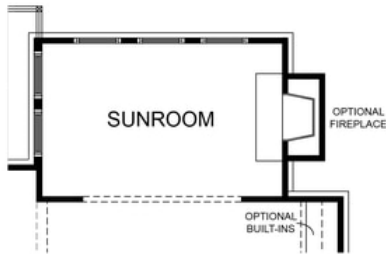


**Want to Know More  
About This Home?**

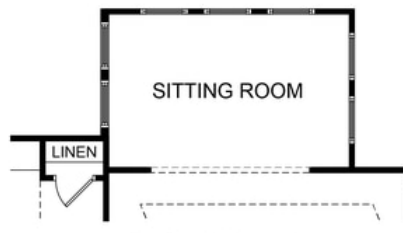
CONTACT OUR COMMUNITY SALES MANAGER

**NONE**

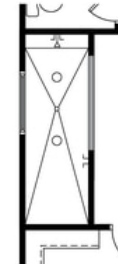
Call Us @ (678) 332-7300



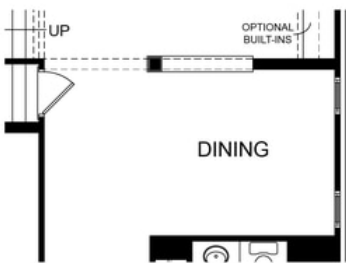
OPT. SUNROOM



OPT. SITTING ROOM



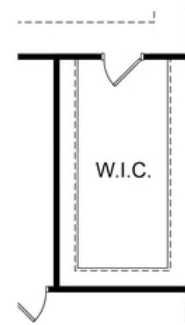
OPT. WALK-IN SHOWER



OPT. DIVISION WALL FOR DINING



OPT. BEDROOM WITH BATH ILO STUDY



OPT. ADDITIONAL WALK-IN CLOSET

**Want to Know More  
 About This Home?**

CONTACT OUR COMMUNITY SALES MANAGER

**NONE**

Call Us @ (678) 332-7300