




PRICED AT
\$577,825

 2220 Sq Ft

 4 Beds

 3.5 Baths

 2 Car Garage

 3.0 Story

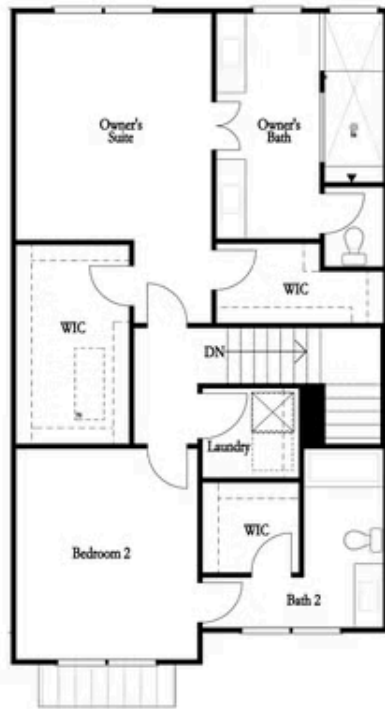
ELEVATE YOUR LIFE IN 2023! Classic farmhouse-style end unit townhome offers luxurious living loaded with upgrades as standard! Offering luxurious, sophisticated living where quality abounds in this stately 3-story beauty in a community of amazing architecture, meandering sidewalks & ample parking. Light-filled main level's open plan has impressive designer kitchen outfitted w/beautiful white 42" white cabinets, walk-in pantry, oversized island w/plenty of seating & striking metropolis soapstone quartz counters overlooking spacious family room w/ beautiful gas fireplace. Enjoy easy access to the main level deck perfect for outdoor meals, coffee in the morning or glass of wine at night. Relax & unwind on the upper level which features 3 bedrooms including the owner suite w/luxurious en suite bath w/dual vanities, large shower & spacious walk-in closet. Terrace level entry has convenient office, workout room or 4th bedroom with full bath. Neutral paint colors throughout paired w/crisp white trim & finishes every buyer craves. Expertly executed, this designer residence has enviable details on all 3 levels. Thoughtfully planned for today's lifestyle, enjoy the ease and convenience of luxury living within walking distance to Suwanee Town Center, walking trails and Parks. Swim community. May-June 2023 estimated time of delivery. PHOTOS AND VIRTUAL ...

**Want to Know More
About This Home?**

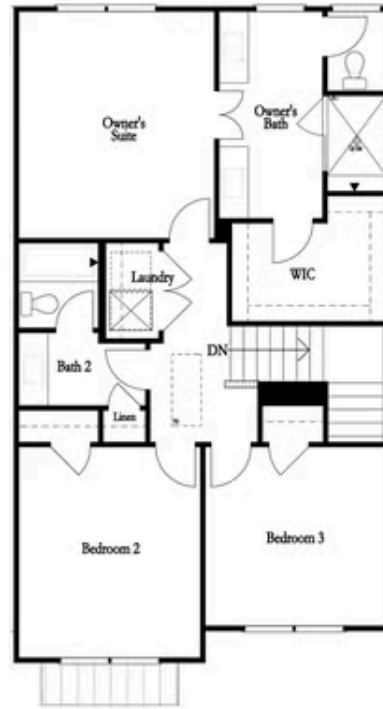
CONTACT OUR COMMUNITY SALES MANAGER

NONE

Call Us @ (678) 332-7300



2 Bedroom Option
Mallory I



3 Bedroom Option
Mallory II

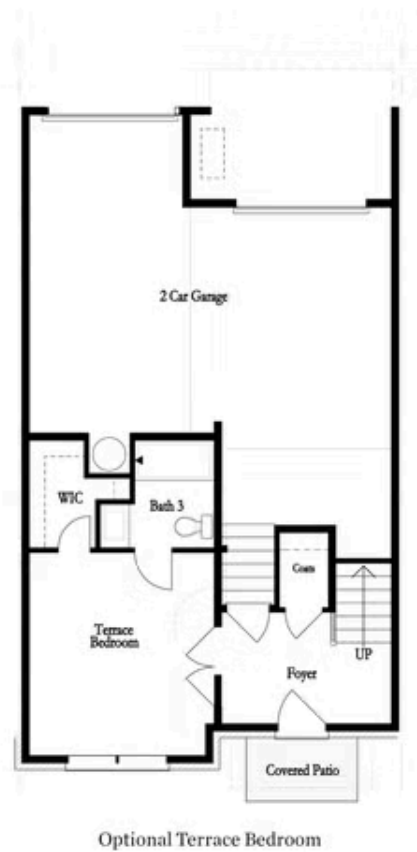
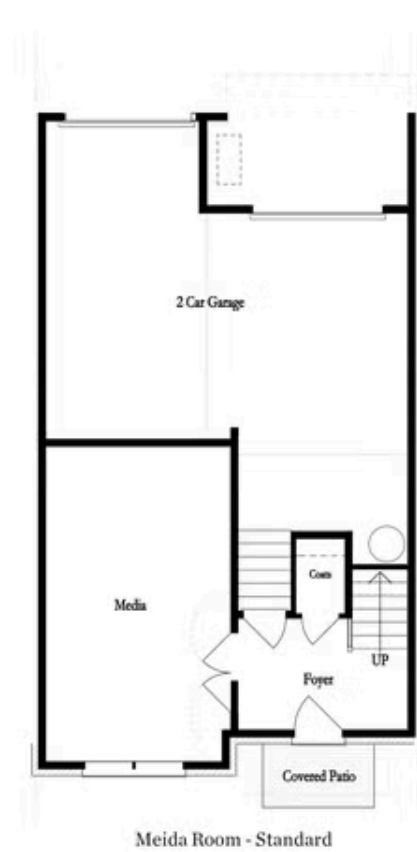
Third Floor

Want to Know More
About This Home?

CONTACT OUR COMMUNITY SALES MANAGER

NONE

Call Us @ (678) 332-7300



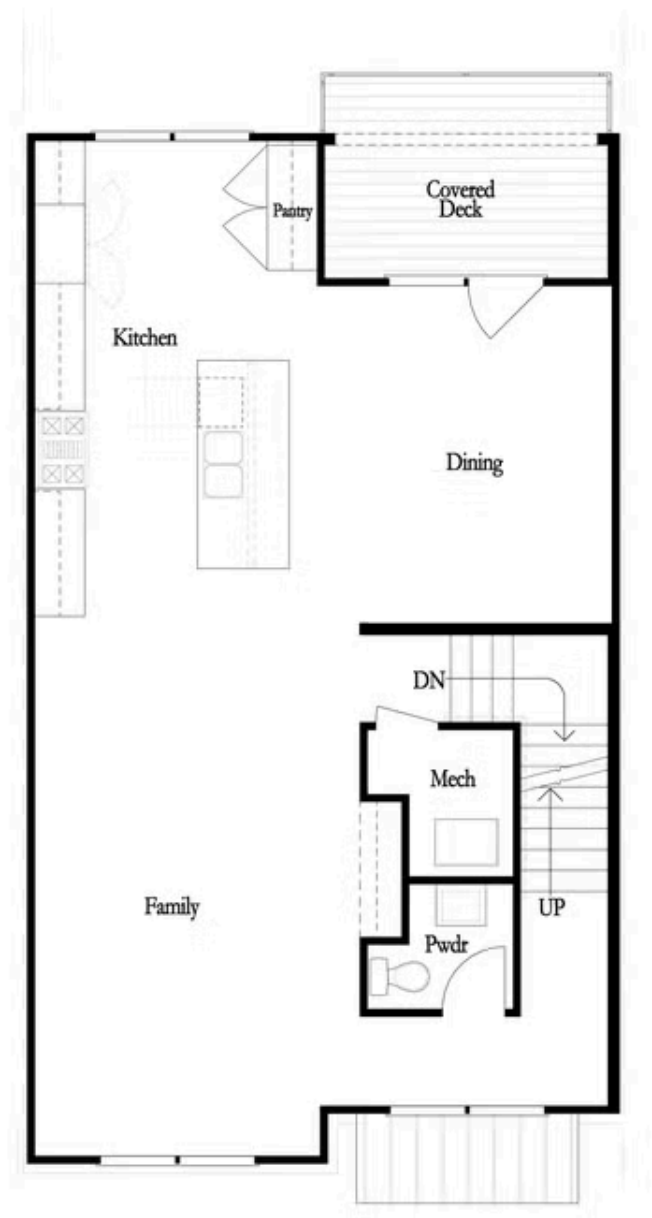
First Floor

Want to Know More
About This Home?

CONTACT OUR COMMUNITY SALES MANAGER

NONE

Call Us @ (678) 332-7300

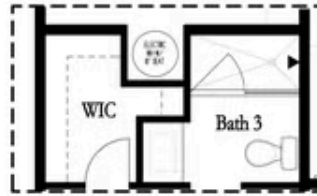


Want to Know More
About This Home?

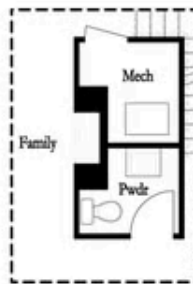
CONTACT OUR COMMUNITY SALES MANAGER

NONE

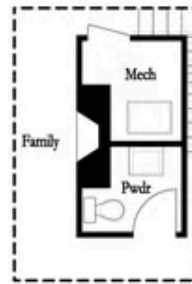
Call Us @ (678) 332-7300



Optional Shower
First Floor

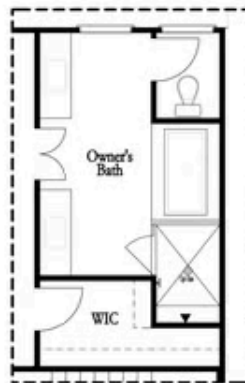


Optional Linear Fireplace

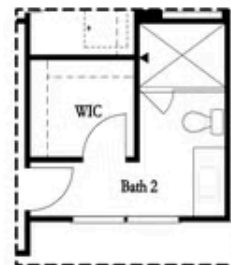


Optional Fireplace

Second Floor



Optional Tub/Shower Combo
Third Floor - 2 Bedroom Layout ONLY



Optional Shower Secondary Bath
Third Floor - 2 Bedroom Layout ONLY

Want to Know More
About This Home?

CONTACT OUR COMMUNITY SALES MANAGER

NONE

Call Us @ (678) 332-7300