



PRICED AT  
**\$561,300**

 2220 Sq Ft

 4 Beds

 3.5 Baths

 2 Car Garage

 3.0 Story

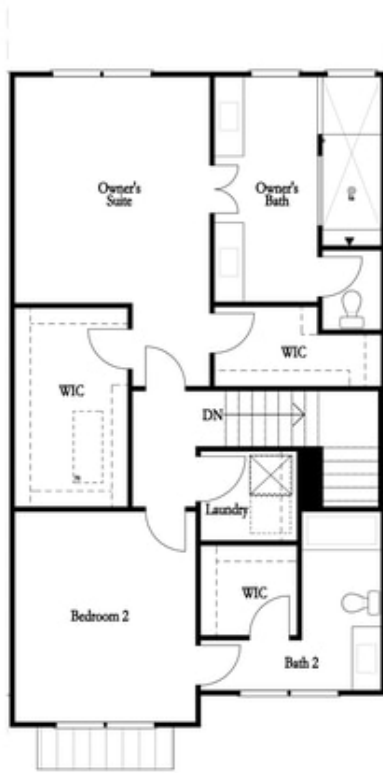
**MOVE-IN READY!!!!** Gorgeous farmhouse-style townhome overlooking plenty of greenspace. Sophisticated living with details every buyer desires. Natural light streams through the main level's open plan with an impressive designer kitchen outfitted w/beautiful 42" cabinets, oversized island w/plenty of seating & quartz counters overlooking spacious family room w/ beautiful, gas fireplace. Enjoy easy access to the main level deck perfect for outdoor meals. Relax & unwind on the upper level which features 3 bedrooms including the owner suite w/luxurious en suite bath w/dual vanities, large shower & a walk-in closet large enough for all your clothes. Terrace level entry has convenient office or 4th bedroom with full bath. Neutral paint colors throughout paired w/crisp white trim & finishes every buyer craves. Expertly executed, this designer residence has enviable details on all 3 levels. Thoughtfully planned for today's lifestyle, enjoy the ease and convenience of luxury living within walking distance to Suwanee Town Center, walking trails and Parks. Swim community. PHOTOS ARE NOT OF ACTUAL HOME. "Elevate your life in 2023 with a new home by The Providence Group and \$5,000 towards closing costs when using one of Seller's preferred lenders!. Harvest Park is 1 mile to Suwanee Town Center Park close ...

**Want to Know More  
About This Home?**

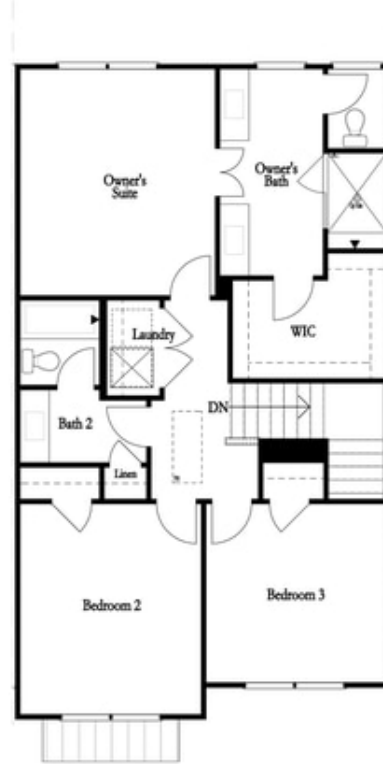
CONTACT OUR COMMUNITY SALES MANAGER

**NONE**

Call Us @ (678) 332-7300



2 Bedroom Option  
 Mallory I



3 Bedroom Option  
 Mallory II

Third Floor

**Want to Know More  
 About This Home?**

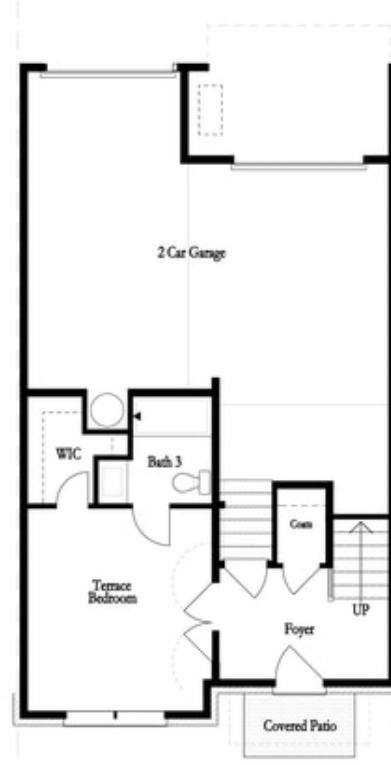
CONTACT OUR COMMUNITY SALES MANAGER

**NONE**

Call Us @ (678) 332-7300



Meida Room - Standard



Optional Terrace Bedroom

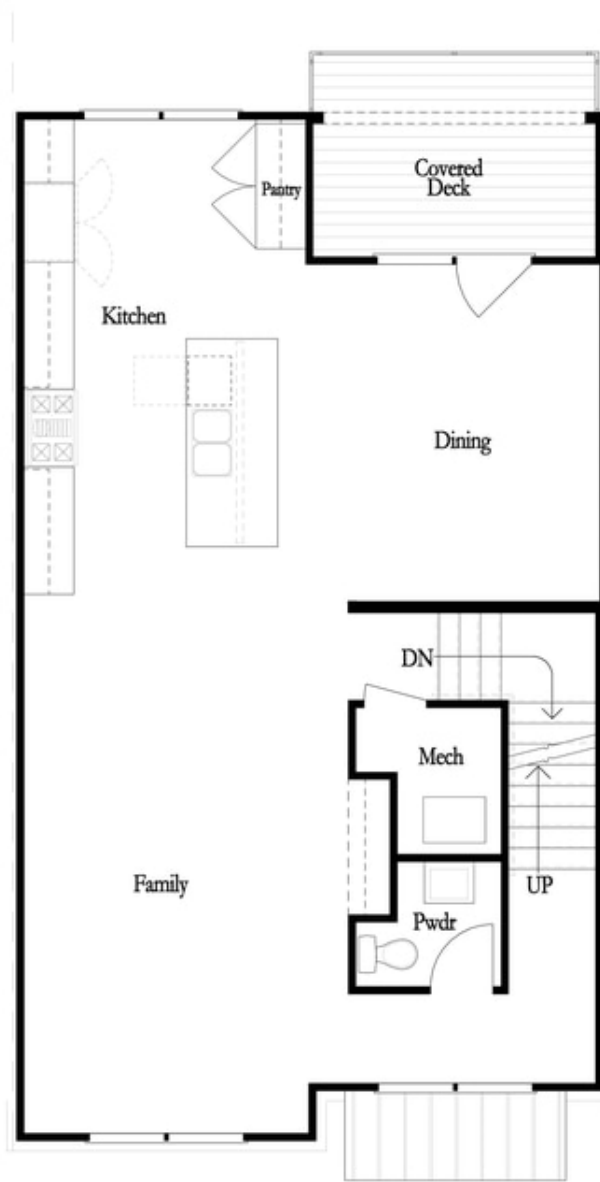
First Floor

**Want to Know More  
 About This Home?**

CONTACT OUR COMMUNITY SALES MANAGER

**NONE**

Call Us @ (678) 332-7300

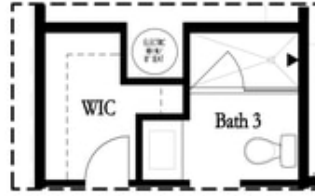


**Want to Know More  
About This Home?**

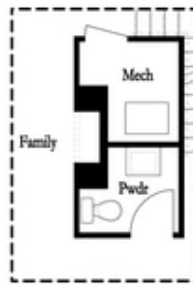
CONTACT OUR COMMUNITY SALES MANAGER

**NONE**

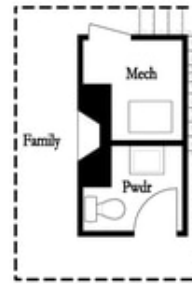
Call Us @ (678) 332-7300



Optional Shower  
**First Floor**

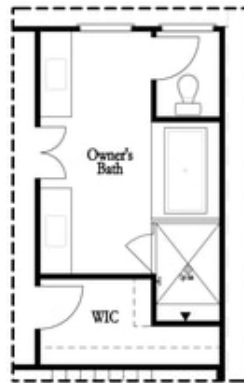


Optional Linear Fireplace

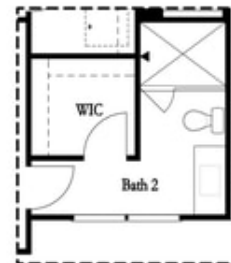


Optional Fireplace

**Second Floor**



Optional Tub/Shower Combo  
**Third Floor - 2 Bedroom Layout ONLY**



Optional Shower Secondary Bath  
**Third Floor - 2 Bedroom Layout ONLY**

**Want to Know More  
 About This Home?**

CONTACT OUR COMMUNITY SALES MANAGER

**NONE**

Call Us @ (678) 332-7300