



PRICED AT
\$828,385

 3059 Sq Ft

 4 Beds

 3.0 Baths

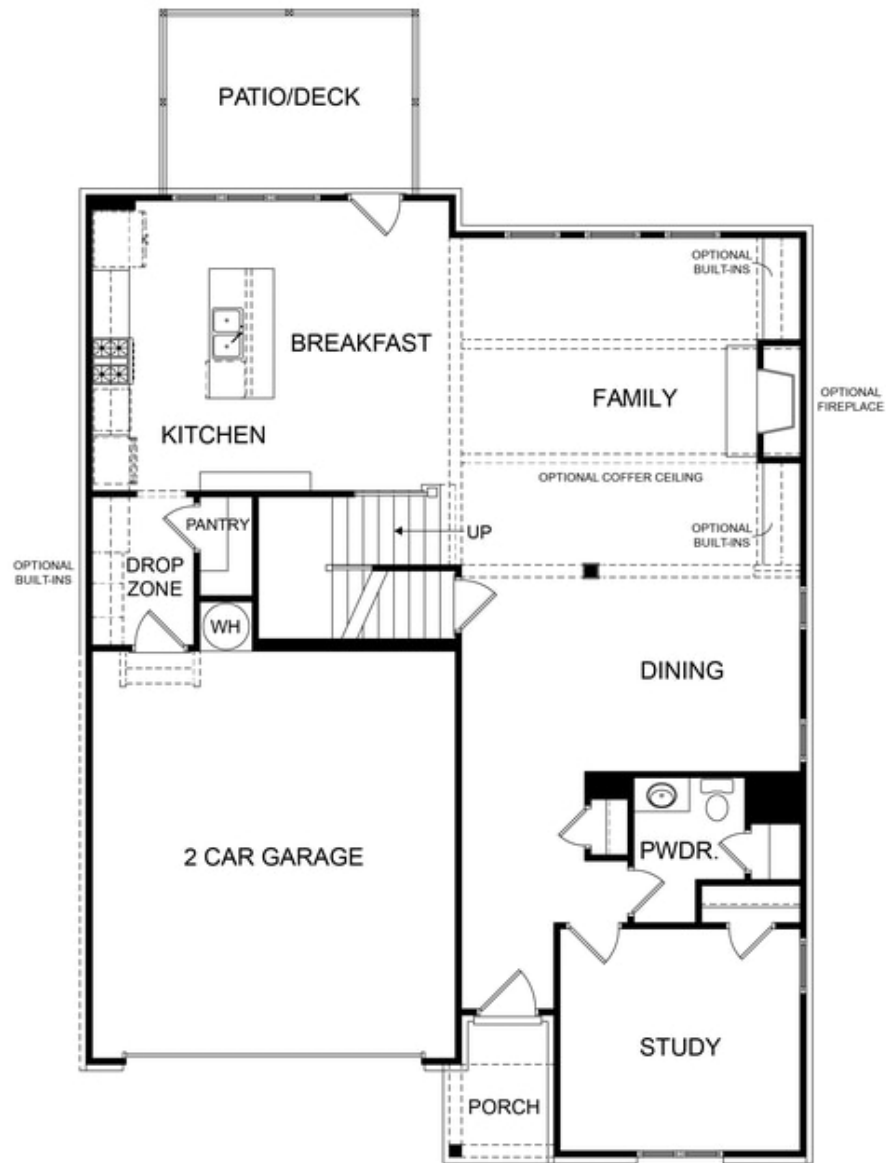
 2 Car Garage

 2.0 Story

ELEVATE YOUR LIFE IN 2023! \$20k Incentive Any Way You Want on contract written before 3/31/2023 and closing on or before 4/28/23. Beautiful white-painted modern farmhouse-style home offering luxurious living with details every buyer desires. Everything you wanted in a home. Open floor plan featuring 10 ft. ceilings. Impressive designer kitchen with a clear view of the family room. Oversized quartz island with plenty of seating for chatting with guests as the chef cooks in the fabulous gourmet kitchen. Featuring a guest suite on the main floor which could also make a convenient home office. Plenty of sizable storage in the unfinished basement also is perfect for one or two more future bedrooms. The second floor offers a large owner's retreat with separate vanities, and deluxe walk-in shower. Two spacious secondary bedrooms with jack & jill bath finish out the second floor. HOA maintained homesites. Estimated closing time frame is March/April 2023. Walking distance to Suwanee Town Center, the Greenway trails, restaurants, shops, and so much more. Top North Gwinnett schools. To be built - Photos are not actual home. Photos of similar previously built home.

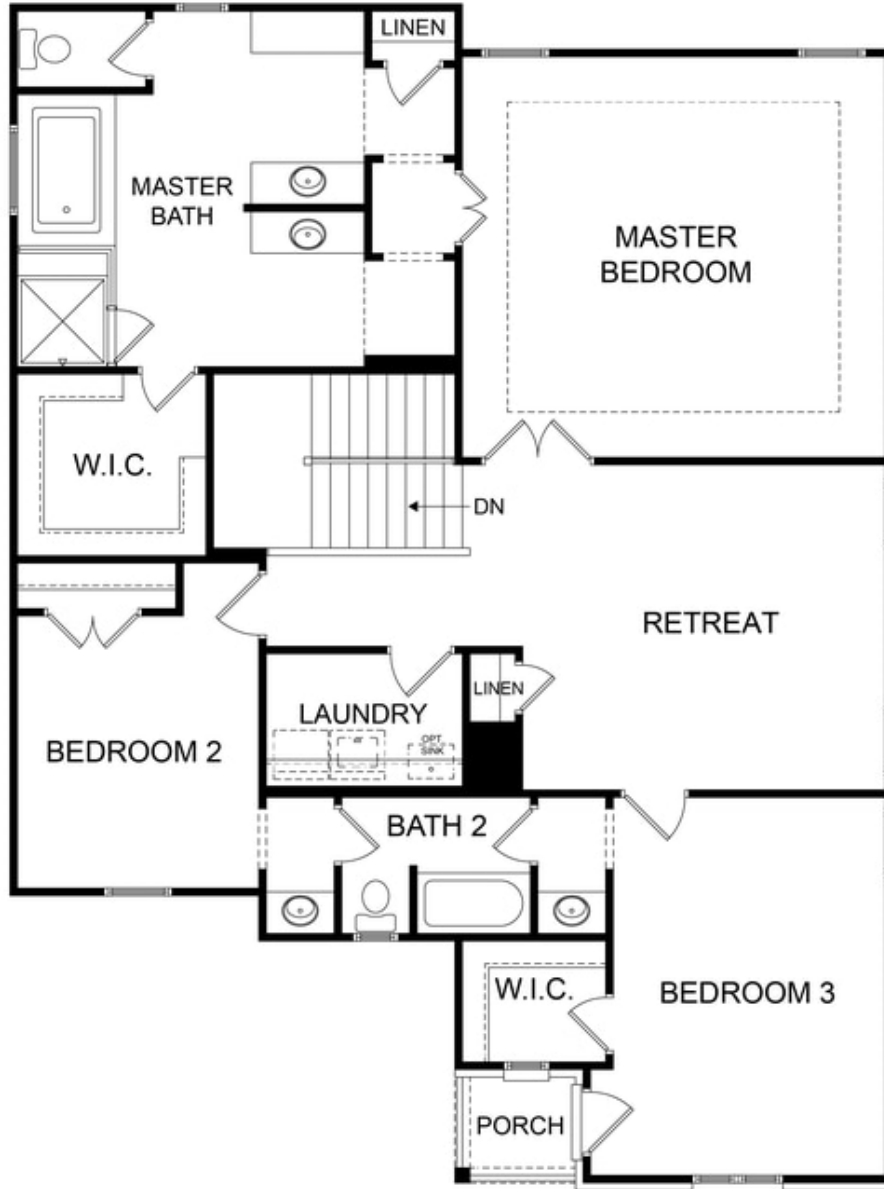
**Want to Know More
About This Home?**

CONTACT OUR NEW HOME NAVIGATOR
Call Us @ (678) 332-7300



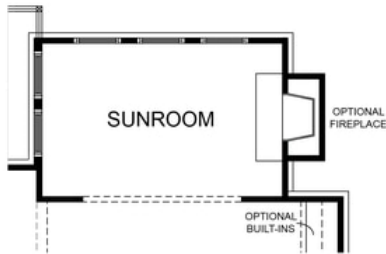
**Want to Know More
About This Home?**

CONTACT OUR NEW HOME NAVIGATOR
Call Us @ (678) 332-7300

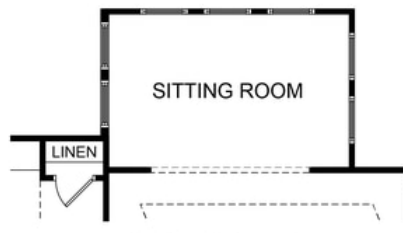


**Want to Know More
About This Home?**

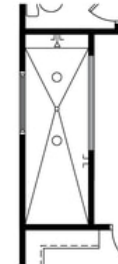
CONTACT OUR NEW HOME NAVIGATOR
Call Us @ (678) 332-7300



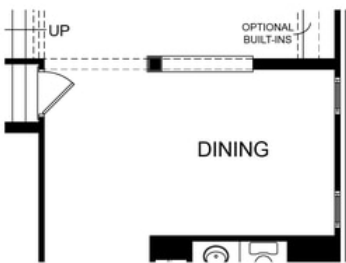
OPT. SUNROOM



OPT. SITTING ROOM



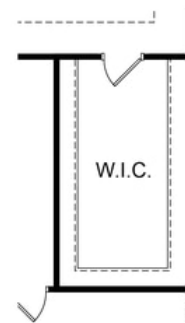
OPT. WALK-IN SHOWER



OPT. DIVISION WALL FOR DINING



OPT. BEDROOM WITH BATH ILO STUDY



OPT. ADDITIONAL WALK-IN CLOSET

Want to Know More
About This Home?

CONTACT OUR NEW HOME NAVIGATOR
Call Us @ (678) 332-7300