



PRICED AT  
**\$578,090**

 **2220 Sq Ft**

 **4 Beds**

 **3.5 Baths**

 **2 Car Garage**

 **3.0 Story**

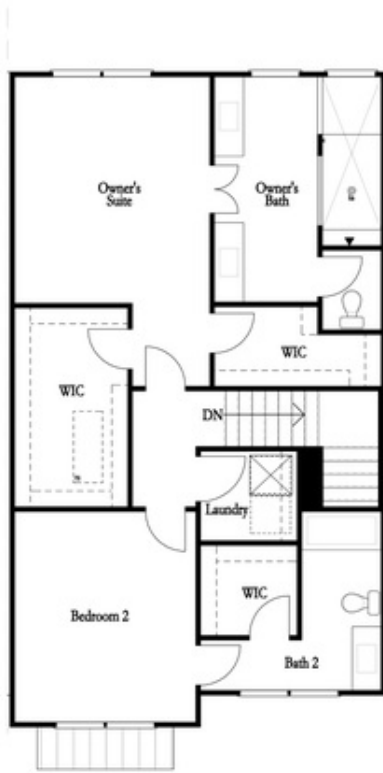
**ELEVATE YOUR LIFE IN 2023! Stunning farmhouse-style townhome overlooking lots of greenspace. Sophisticated living with details every buyer longs for. Light and bright main level's open plan has impressive designer kitchen outfitted w/beautiful 42" cabinets, oversized island w/plenty of seating & quartz counters overlooking spacious family room w/ beautiful, gas fireplace. Enjoy easy access to the main level deck perfect for outdoor meals. Relax & unwind on the upper level which features 3 bedrooms including the owner suite w/luxurious en suite bath w/dual vanities, large shower & a walk-in closet large enough for all your clothes. Terrace level entry has convenient office or 4th bedroom with full bath. Neutral paint colors throughout paired w/crisp white trim & finishes every buyer is looking for. Expertly executed, this designer residence has enviable details on all 3 levels. Thoughtfully planned for today's lifestyle, enjoy the ease and convenience of luxury living within walking distance to Suwanee Town Center, walking trails and Parks. Swim community. May-June 2023 estimated time of delivery. PHOTOS ARE NOT OF ACTUAL HOME. \$5000 towards closing costs using Seller's preferred lender. Harvest Park is 1 mile to Suwanee Town Center Park close to the Greenway, restaurants, and so much more. ...**

**Want to Know More  
About This Home?**

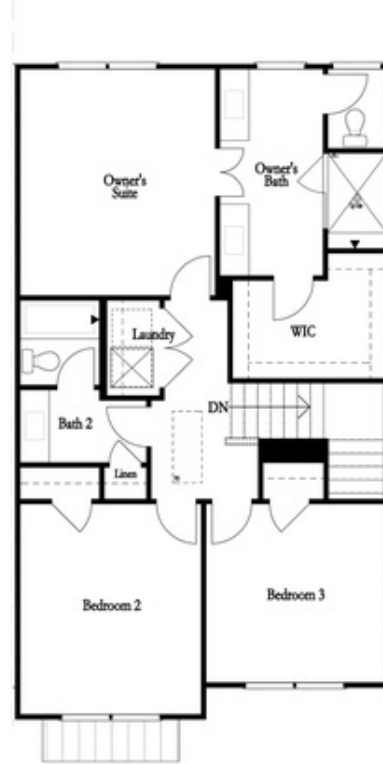
**CONTACT OUR COMMUNITY SALES MANAGER**

**NONE**

**Call Us @ (678) 332-7300**



2 Bedroom Option  
 Mallory I



3 Bedroom Option  
 Mallory II

Third Floor

Want to Know More  
 About This Home?

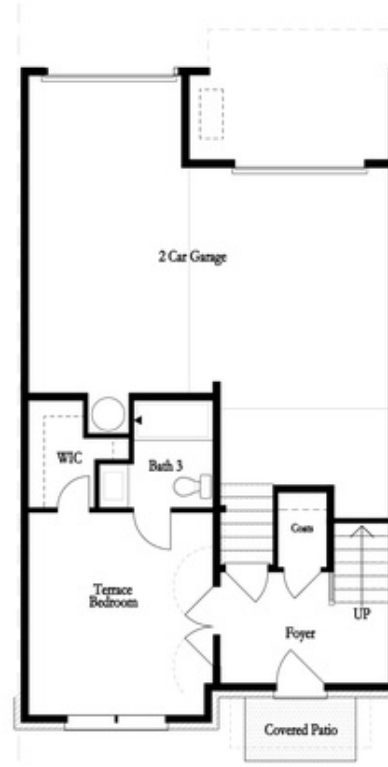
CONTACT OUR COMMUNITY SALES MANAGER

**NONE**

Call Us @ (678) 332-7300



Meida Room - Standard



Optional Terrace Bedroom

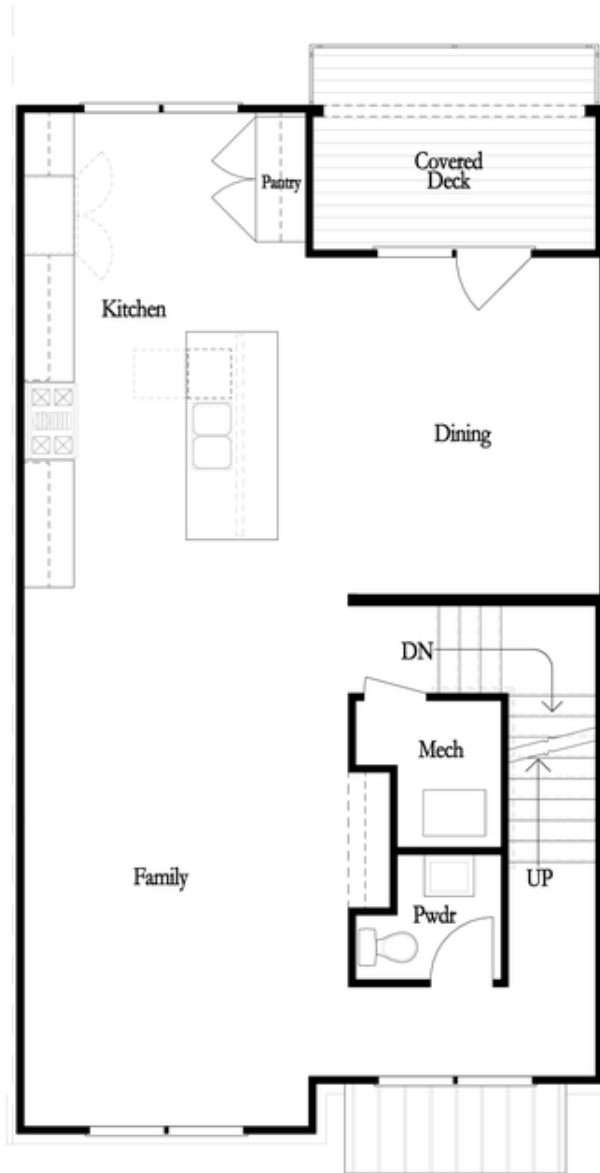
First Floor

Want to Know More  
About This Home?

CONTACT OUR COMMUNITY SALES MANAGER

**NONE**

Call Us @ (678) 332-7300

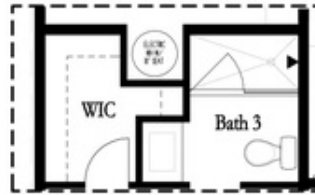


Want to Know More  
About This Home?

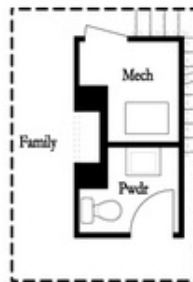
CONTACT OUR COMMUNITY SALES MANAGER

**NONE**

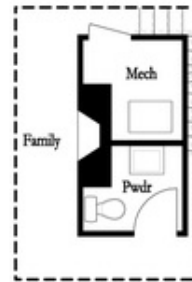
Call Us @ (678) 332-7300



Optional Shower  
**First Floor**

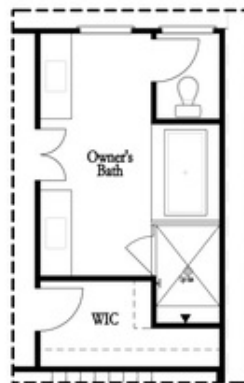


Optional Linear Fireplace

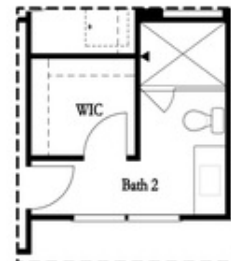


Optional Fireplace

**Second Floor**



Optional Tub/Shower Combo  
**Third Floor - 2 Bedroom Layout ONLY**



Optional Shower Secondary Bath  
**Third Floor - 2 Bedroom Layout ONLY**

Want to Know More  
 About This Home?

CONTACT OUR COMMUNITY SALES MANAGER

**NONE**

Call Us @ (678) 332-7300