



PRICED AT
\$569,650

 2220 Sq Ft

 4 Beds

 3.5 Baths

 2 Car Garage

 3.0 Story

Beautiful and stately farmhouse-style end unit townhome by The Providence Group. Sun-drenched main level's open plan has impressive designer kitchen outfitted w/beautiful 42" white cabinets, stainless steel appliances including range hood, oversized island with plenty of seating & quartz counters overlooking spacious family room with gorgeous fireplace. Enjoy easy access to the main level covered deck perfect for al fresco dining. Relax and unwind on the upper level which features 3 bedrooms including the owner suite with luxurious en suite bath with dual vanities, large shower and spacious walk-in closet. Terrace level entry has convenient office or 4th bedroom with full bath. Neutral paint colors throughout paired with crisp white trim & finishes every buyer craves. Expertly executed, this designer residence has enviable details on all 3 levels. Thoughtfully planned for today's lifestyle, enjoy the ease and convenience of luxury living within walking distance to Suwanee Town Center, walking trails and Parks. Swim community with large beautiful pool. PHOTOS ARE NOT OF ACTUAL HOME. Estimated move-in Nov/Dec 2022. \$5000 towards closing costs using Seller's preferred lender. Harvest Park is 1 mile to Suwanee Town Center; close to the Greenway, restaurants, and so much more. North Gwinnett Schools. Walk to Suwanee ...

**Want to Know More
About This Home?**

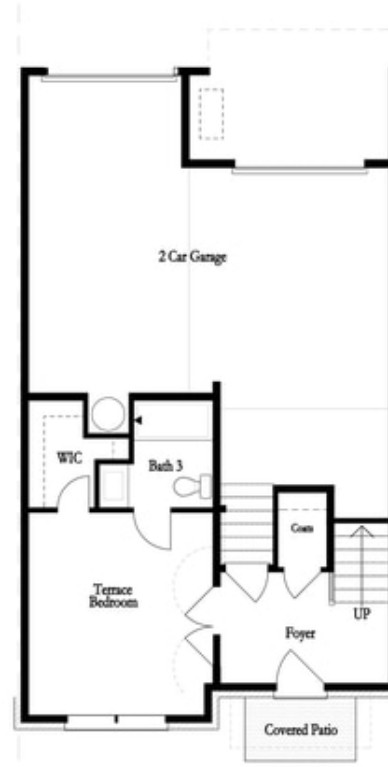
CONTACT OUR COMMUNITY SALES MANAGER

NONE

Call Us @ (678) 332-7300



Meida Room - Standard



Optional Terrace Bedroom

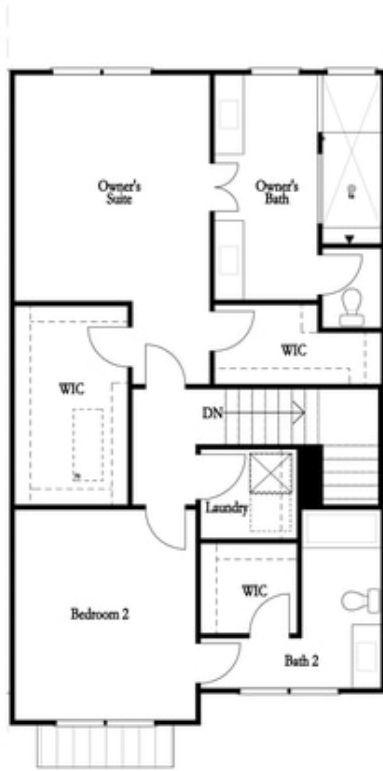
First Floor

**Want to Know More
About This Home?**

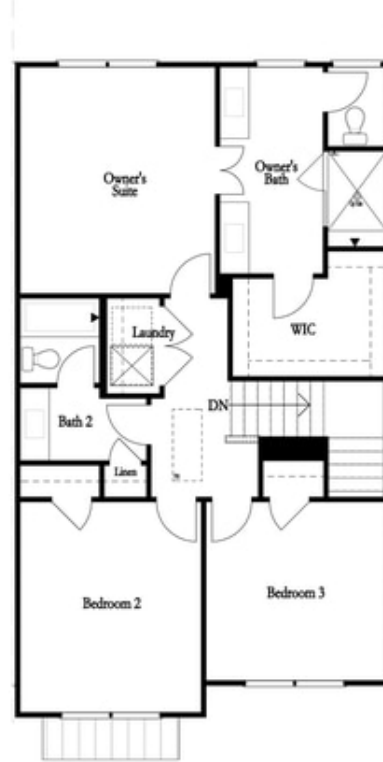
CONTACT OUR COMMUNITY SALES MANAGER

NONE

Call Us @ (678) 332-7300



2 Bedroom Option
 Mallory I



3 Bedroom Option
 Mallory II

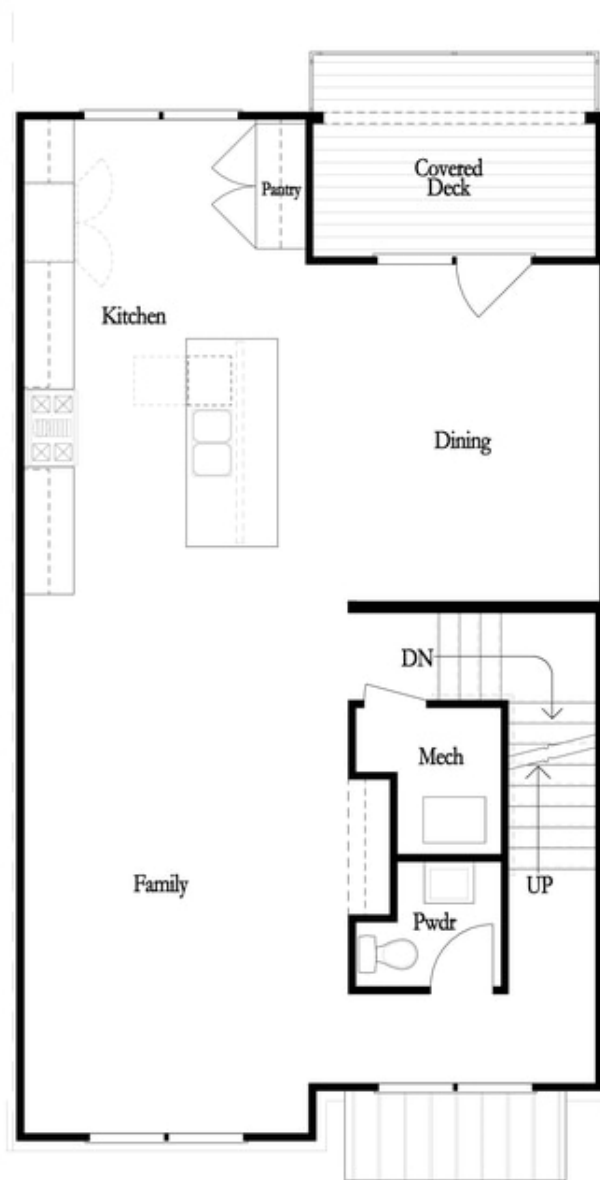
Third Floor

**Want to Know More
 About This Home?**

CONTACT OUR COMMUNITY SALES MANAGER

NONE

Call Us @ (678) 332-7300

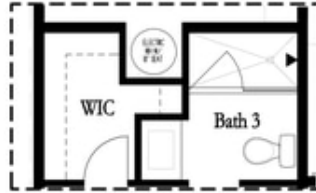


**Want to Know More
About This Home?**

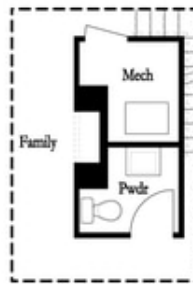
CONTACT OUR COMMUNITY SALES MANAGER

NONE

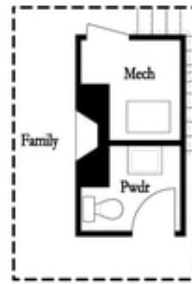
Call Us @ (678) 332-7300



Optional Shower
First Floor

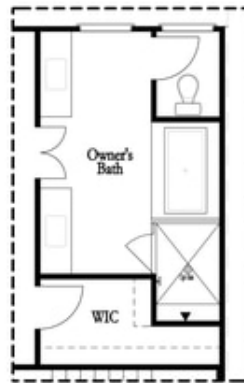


Optional Linear Fireplace

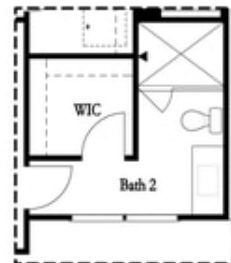


Optional Fireplace

Second Floor



Optional Tub/Shower Combo
Third Floor - 2 Bedroom Layout ONLY



Optional Shower Secondary Bath
Third Floor - 2 Bedroom Layout ONLY

**Want to Know More
 About This Home?**

CONTACT OUR COMMUNITY SALES MANAGER

NONE

Call Us @ (678) 332-7300