



PRICED AT  
**\$546,150**

 2220 Sq Ft

 4 Beds

 3.5 Baths

 2 Car Garage

 3.0 Story

**ELEVATE YOUR LIFE IN 2023! New Year New Price PLUS \$20K Any Way You Want on contract written before February 28, 2023 and closing by March 31, 2023! Stately farmhouse-style townhome by The Providence Group. Sun-drenched main level's open plan has impressive designer kitchen outfitted with beautiful 42" slate cabinets, stainless steel appliances including range hood, oversized island with plenty of seating & quartz counters overlooking spacious family room with gorgeous fireplace. Enjoy easy access to the main level covered deck perfect for al fresco dining. Relax and unwind on the upper level which features 3 bedrooms including the owner suite with luxurious en suite bath with dual vanities, sizable shower and spacious walk-in closet. Terrace level entry has convenient office or 4th bedroom with full bath. Neutral paint colors throughout paired with crisp white trim & finishes every buyer craves. Expertly executed, this designer residence has enviable details on all 3 levels. Thoughtfully planned for today's lifestyle, enjoy the ease and convenience of luxury living within walking distance to Suwanee Town Center, walking trails and Parks. Swim community with large beautiful pool. PHOTOS ARE NOT OF ACTUAL HOME. Estimated move-in February/March 2023. Harvest Park is 1 mile to Suwanee ...**

**Want to Know More  
About This Home?**

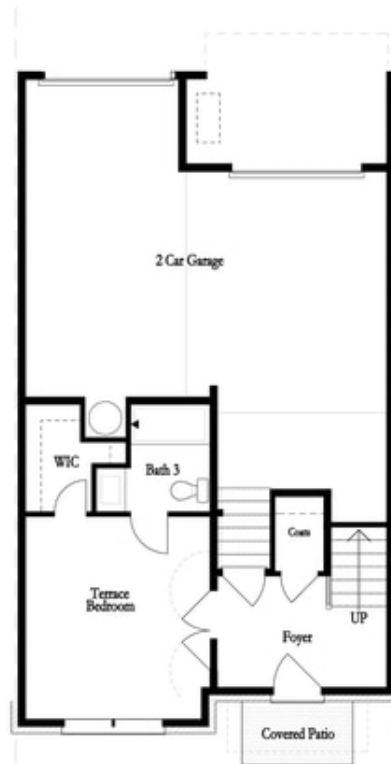
CONTACT OUR NEW HOME NAVIGATOR

**NONE**

Call Us @ (678) 332-7300



Meida Room - Standard



Optional Terrace Bedroom

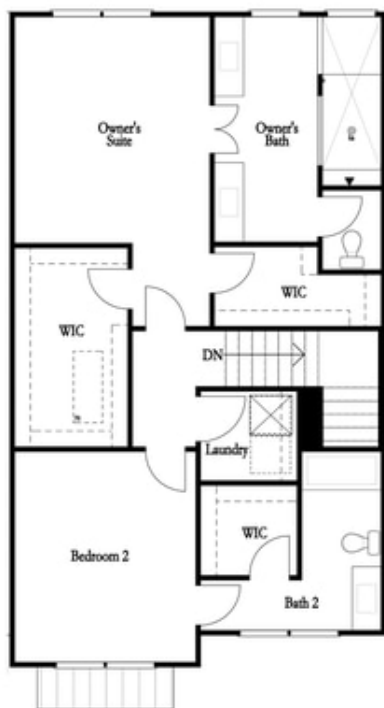
First Floor

Want to Know More  
About This Home?

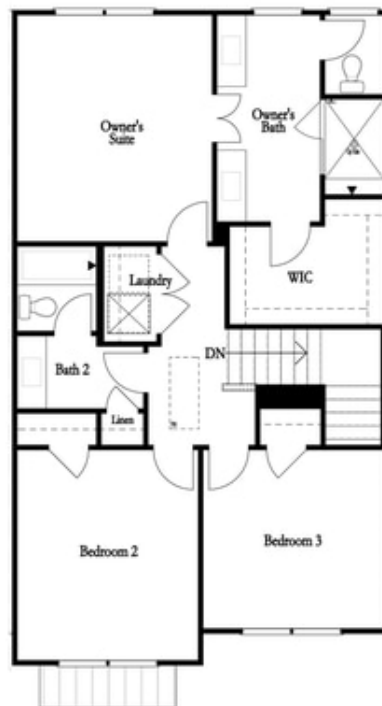
CONTACT OUR NEW HOME NAVIGATOR

**NONE**

Call Us @ (678) 332-7300



2 Bedroom Option  
Mallory I



3 Bedroom Option  
Mallory II

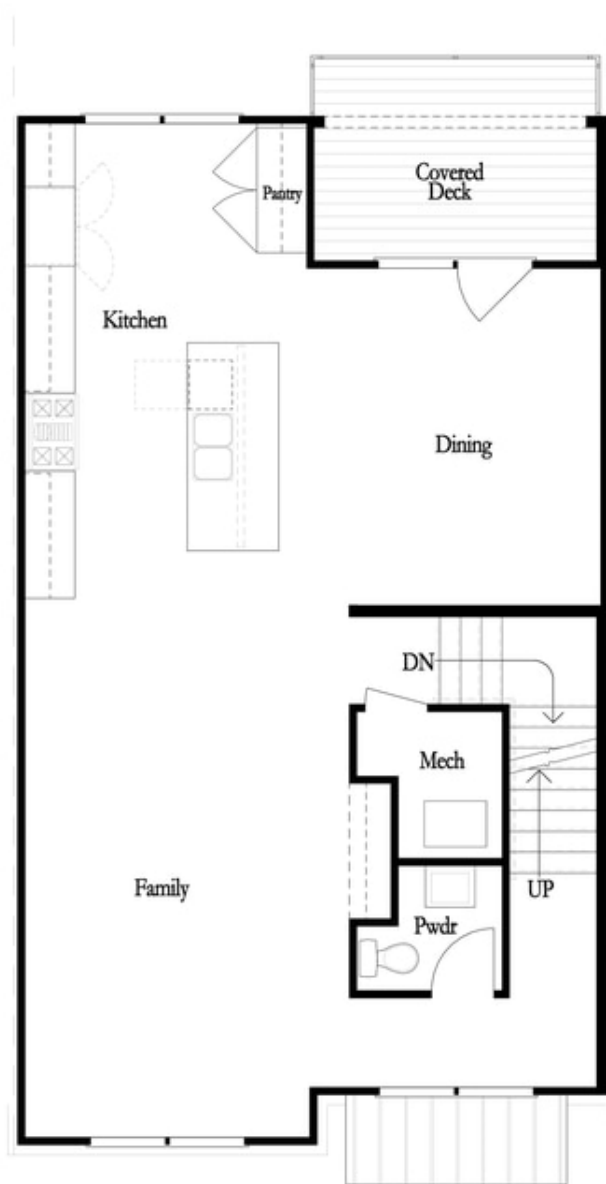
Third Floor

Want to Know More  
About This Home?

CONTACT OUR NEW HOME NAVIGATOR

**NONE**

Call Us @ (678) 332-7300

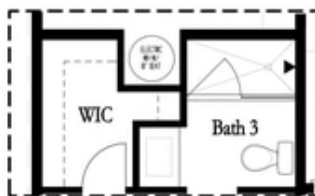


Want to Know More  
About This Home?

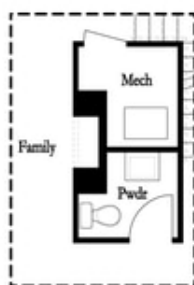
CONTACT OUR NEW HOME NAVIGATOR

**NONE**

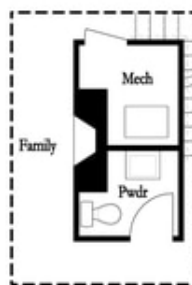
Call Us @ (678) 332-7300



Optional Shower  
First Floor

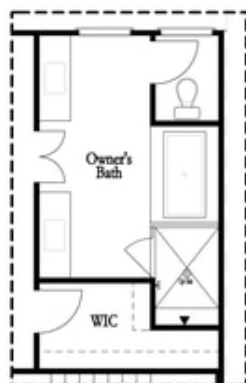


Optional Linear Fireplace



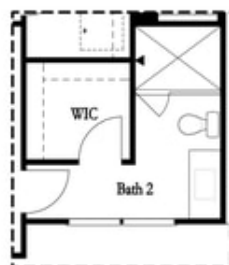
Optional Fireplace

Second Floor



Optional Tub/Shower Combo

Third Floor - 2 Bedroom Layout ONLY



Optional Shower Secondary Bath

Third Floor - 2 Bedroom Layout ONLY

Want to Know More  
About This Home?

CONTACT OUR NEW HOME NAVIGATOR

**NONE**

Call Us @ (678) 332-7300